

**FOR RENT**

**2 bedroom apartment** for rent in Colby. Call 785-443-2391.

**Nice 5 or 6 bedroom house** in Goodland. New windows, central heat and air, 2.5 baths. (785) 821-0106.

**4 bedroom, 2.5 bath** in a great location in Colby. \$875 a month. No pets and no smoking. Call 785-650-8195. Leave a message.

**House for Rent:** Cozy 1 bedroom bungalow in Norcatur. Furnished or unfurnished. \$250 a month. Available immediately. Call Carolyn at (785) 475-4369.  
O 12/7 TFN

**4 bedroom 2.5 bath home** for rent in Colby. Great location! \$875/month. No pets/smoking. Call 785-625-6818. Leave message.  
C 11/30-TFN

**Houses and apartments** in Goodland, KS. All sizes. Call for details. (785) 890-6538.  
G 10/12-tfn

**1 bedroom, clean and furnished** apartment for rent in Goodland. Adults, non-smoking, no pets. Gas and water paid. Call (785) 899-3139 or (785) 899-3942.  
G 9/7-tfn

**Murray Equipment Leasing, LLC** in Colby is now offering construction equipment for rent. Some items include a 38 ft. skytrack forklift, and an 85 ft. boom truck. If interested

please call 785-443-1339 or 785-462-6908.  
C 8/1-TFN

**Houses & Apartments.** Cole Real Estate in Goodland 785-899-2683.  
G tfn

**For Rent-Bieber Cottages** in Norton, independent apartment for seniors, 2 bedrooms, 1 bath, handicap accessible, all appliances furnished. Garage emergency response system, water and gas paid. Pet friendly. Contact: Nancy McGinnis, Andbe Home, 785-877-2601.

**FARM SERVICES/ EQUIPMENT**

**Disc Rolling**—Rolling on the farm. Call Ron Lewis, Eustis, NE. 308-486-3501.  
N tfn

**VEHICLES/ RECREATION**

**2010 Toyota Tacoma** reg cab, 2WD, 4CL, 5SP, 7K, Warr., \$15,000. 785-628-8726.  
— C 12/21 —

**2007 Toyota Tundra Double** cab 4x4, 25,000 miles. 2006 Toyota Avalon Sedan, 89,000 miles. 785-386-8300.  
C 12/14-12/21

**1995 Plymouth Voyager** mini van for sale, good condition, new battery, 126,000 miles, \$700. 785-626-6422  
O 12/21

**PASTURE WANTED**

**Pasture wanted for 25 to 150** cow/calf pairs for 2012 and beyond. Lee Hardy, Edmond, KS. 785-871-0832.  
N tfn

**Grass pasture WANTED to rent**, Adam Jones, 785-332-6206.

**FOR SALE**

**In time for Christmas** - 50 gal aquarium with accessories. Call 785-460-7153.  
— C 12/21 —

**Pair of floral wing back** chairs \$100. Maple chest (old) \$150. 785-687-4780.  
— C 12/21 —

**HP Office Jet 6500 Printer**, new ink, good condition. West Bend brand machine. Best offers, save shipping costs. 785-462-2087.  
— C 12/21 —

**Cuisinart 8 cup food processor**. 7 slicing blades, dough blade and 2 batters. \$75. (785) 890-7058.  
G 12/21-12/21

**Crossbred 4-H Gilt** from 2011 Fair. 785-332-5155.  
□ SF 12/21 □

**Heavy duty commercial batteries** and top quality filters for most everything on your farm at factory direct prices at Colby Ag Center 785-462-6132.  
10/26-1-11

**Two Sega Genesis** game stations with 25 plus games. \$100 OBO. (785) 890-7224.  
G 8/3-tfn

**Rubber stamps**, custom made, The Country Advocate, 1205 Main. Goodland, Kansas. (785) 899-2338.

**PETS**

**Free kittens, 60 days old.** Choice of 5 kittens would make a great Christmas gift. Call 785-460-2443.  
— C 12/21 —

**Multi-Poos and Maltese** puppies up to date on shots and worming. Call 785-538-2513.  
— C 12/21-1/4 —

**Awesome Christmas present** that would make a great addition to your family. Chihuahua puppies - 3 boys, 2 girls for sale. 785-269-7122.  
— C 12/21 —

**Registered Schnauzer**, Maltese, Silkies, Lhasa Apso puppies, around 3 months old. Would make nice gifts! \$75 each. (785) 626-4219.  
G 12/21-12/28

**For sale**, 2 registered Chihuahua male pups. Ready Dec. 19th. \$100 each 785-386-4242.  
C 12/14-12/21

**Teddy Bear Pomeranians.** Very special litter, M & F party colored. Must see! 785-443-2470.  
C 12/14-TFN

**AUCTION SERVICE**

**McEwen Auction**—Duane-Darlene. 601 East Holme, Norton, Kansas 67654, Phone

785-877-3032. Experienced in all types of Auctions. Computer clerking and settlement. Real Estate Salesperson and Listing Agent for Metcalf Real Estate  
N tfn

**KANSAS CLASSIFIEDS**

**Career Opportunity** AIRLINES ARE HIRING - Train for hands on Aviation Maintenance Career. FAA approved program. Financial aid if qualified - Housing available CALL Aviation Institute of Maintenance. 888-248-7449.

**Career Opportunity** EARN COLLEGE DEGREE ONLINE. \*Medical, \*Business, \*Criminal Justice. Job placement assistance. Computer available. Financial Aid if qualified. SCHEV certified. Call 888-220-3977 www.CenturaOnline.com

**Career Training** ALLIED HEALTH career train-

ing - Attend college 100% online. Job placement assistance. Computer available. Financial Aid if qualified. SCHEV certified. Call 800-481-9409 www.CenturaOnline.com

**Help Wanted** Exp. Flatbed Drivers: Regional opportunities now open with plenty of freight & great pay! 800-277-0212 or primeinc.com

**Help Wanted** Top Pay On Excellent Runs! Regional Runs, Steady Miles, Frequent Hometown, New Equipment. Automatic Detention Pay! CDL-A, 6 mos. exp. required. EEOE/AAP 866-322-4039 www.Drive4-Marten.com

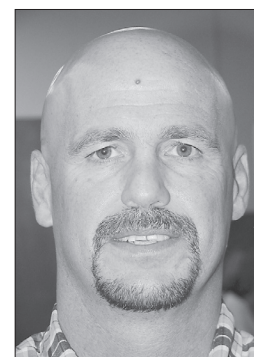
**Help Wanted/Truck Driver** "You got the drive, We have the Direction" OTR Drivers APU Equipped Pre-Pass EZ-pass Pets/passenger policy. Newer equipment. 100% NO touch. 1-800-528-7825

Shaw Aerial Spraying welcomes

**Scott Gawith**

Shaw Aerial spraying is pleased to announce that *Scott Gawith* has joined our Agro-Culture liquid fertilizer team.

Lock in your fertilizer prices today with financing available and ask about our on the farm delivery.



Call Scott today for all of your liquid fertilizer needs at (785) 953-0707.

**AG EQUIPMENT INTERNET AUCTION**

Bidding starts to close **Wed., Dec. 28** 10 a.m. CST

**Item #B2139** '09 JD 7330 Premium MFW tractor

**Item #D8652** '00 JD 9750 STS combine

**Item #D8654** '98 Case IH 2388 combine

**COMBINES:** '00 JD 9750 STS, '98 CIH 2388, '97 CIH 2188 Axial-Flow, '96 JD 9600, '95 CIH 2166 Axial-Flow, '90 Gleaner R60 combine w/ 24' rigid platform **TRACTORS:** '09 & '08 JD 7330 Premium MFW, '02 JD 6405 w/ldr, '00 CAT Challenger 75E **DRILLS:** JD 1850 42' air disk drill w/ JD 787 air commodity cart, '02 Sunflower 9432 30' grain drill w/ liquid fertilizer tank **APP EQUIP:** '06 Chandler 26' triple axle sprdr **TILLAGE:** '10 Orthman 1tRIPr 12R 40" precision strip-tillage system, '08 JD 2310 40" mulch finisher, JD 637 rock disk **TRAILERS:** '11 Travalong 34' grain hopper and more online. 10% buyers premium applies | Aaron McKee TX

**ALL SELL WITH NO RESERVES!** **866.608.9283**

**purple wave auction** Straight. Simple. Sold.

**BID NOW!** [www.purplewave.com](http://www.purplewave.com)

**HAVEN'T STARTED YOUR CHRISTMAS SHOPPING YET?**

NOW IS THE TIME AT SAMWAY'S DISCOUNTS IN EVERY DEPARTMENT

**Free Delivery in Kansas**  
Oberlin & East-22nd  
West of Oberlin-23rd  
In McCook Christmas Eve Delivery until 3 p.m.

**SAMWAY FloorCovering & FURNITURE**

1801 No. Hwy 83, McCook (308) 345-1952

American Express  
Visa • Mastercard • Discover  
90 Days • 6 Months or 12 Months  
Same as Cash or Monthly Payments

**Do you have all your Christmas shopping done? If not, don't worry you still have plenty of time and at Vince's GM Center we carry small, medium and large gifts along with 0% apr up to 72 months or up to \$5005 customer cash on select models..**

<b>2011 Chevy Malibu, Blue, V-6, sunroof</b>	<b>2011 Chevy 1/2 ton pickup, Silver, w/tow pkg, 4X4</b>
<b>2011 GMC 1/2 ton Crew Cab, White, cloth, 6.2 V-8</b>	<b>2011 GMC Yukon XI, Black, Denali, DVD player</b>

*thought to ponder.... Why do airlines call flights nonstop? Won't they all stop eventually?*

**VINCE'S GMC CENTER**

*We Look Forward To Serving You*

1697 Rose Ave., Burlington, Colorado

*"Selling Cars for Years....Making Friends For Life."*

**719-346-5541 • 800-546-5541**

[www.vincesgmc.com](http://www.vincesgmc.com)

**HomeLand REALTY AUCTION**

(785) 462-8255  
www.HomeLandRE.com

An Affiliate of **United Country**

<b>NEW LISTING</b>  <b>125 E. Walnut</b> 4 BR/2 Bath-2 Car Garage Call Rock Today!	<b>NEW LISTING</b>  <b>5 Austin Court</b> 4 BR/2 Bath Call Toni today!
<b>A MUST SEE</b>  <b>1111 Flint</b> 4 BR/2 Bath Give Pat a call today!	<b>GREAT LOCATION</b>  <b>1160 Wheatridge</b> 4 BR/3 Bath Give Pat a call today!
<b>LEASE WOULD BE CONSIDERED</b>  <b>1690 W. 4th</b> Very well maintained dental office Call Marilyn today!!!	

Pioneer II Sub. Lots \$12,000	460 Arrowhead <b>SOLD</b>	460 W. 4th CONTRACT
El Chaparral Add. Lots \$18,000	815 Cherokee Dr. CONTRACT	905 S. Range \$112,500
411 Illinois, Brewster CONTRACT \$79,900	1111 Flint \$79,900	210 Iowa, Brewster \$115,000
410 Converse, Oakley <b>SOLD</b>	112 Manchester, Brewster \$89,900	230 S. Grant \$118,000
340 W. 8th \$69,000	125 E. Walnut \$98,500	1800 Harvey Court CONTRACT
445 W. 6th \$69,500	565 N. Mission Ridge CONTRACT	5 Austin Court \$134,900
1135 W. 6th CONTRACT	255 N Garfield <b>SOLD</b>	1125 Wheatridge \$162,500
940 W. 2nd \$70,000	945 Mentlick \$109,500	1160 Wheatridge \$209,500

**NATIONAL MARKETING - PROVEN LOCAL EXPERTISE**

6403 Old Hwy. 40, Park, KS 41 acres, three bedroom house & several out-buildings. \$149,500 Call Rock today!  
2-6 acre lots located along I-70 frontage. Give Marilyn a call today!  
280 E. 4th, Colby, KS Big opportunity at small cost. \$49,500 Call our office today!  
1690 W. 4th, Colby, KS Well maintained dental office with over 2,100 sq. ft. \$160,000 Give Marilyn a call today!  
217 Center, Oakley, KS Our Place-restaurant with all equipment included. \$180,000 Give Jerry a call today!  
1675 W. 4th, Colby, KS Use the warehouse and let the office lease help with payments. \$195,000 Call Pat for details!  
111 W. 3rd, Oakley, KS 10,000+ square foot building with an excellent tenant & great cash flow. \$210,000 Call Rock!  
464 Highway 83, Oakley, KS Colonial Steak House. Excellent opportunity, some owner financing available. \$399,000 Call Tom  
Commercial lot 6.7 acres adjacent to Wal-Mart with I-70 frontage, Colby, KS \$545,000 Call Rock!  
Commercial lot 10 acres North of Interstate between Franklin & Country Club Drive East of Bourquins. (Can be split) Call Tom!

**WANTED: AG LAND - COMMERCIAL - RESIDENTIAL LISTINGS**

Pat Sloan (785) 443-3261	1055 S. Range Colby, KS	Rock L. Bedore (785) 443-1653
Marilyn Meyer (785) 462-2703	<a href="http://www.HomeLandRE.com">www.HomeLandRE.com</a>	Tom Harrison (785) 443-0136
Toni Lindberg (785) 443-4032		Jerry Wycoff (785) 672-0429