

FOR SALE

Two Sega Genesis game stations with 25 plus games. \$100 OBO. (785) 890-7224.

GE 25 cu. ft. side by side Refrigerator, microwave/stove combination, electric. Almond. Make offer, 785-871-0040.

Rubber stamps, custom made, The Country Advocate, 1205 Main. Goodland, Kansas. (785) 899-2338.

KANSAS CLASSIFIEDS

Career Opportunity
AIRLINES ARE HIRING - Train for hands on Aviation Career. FAA approved program. Financial aid if qualified - Job placement assistance. CALL Aviation Institute of Maintenance. 888-248-7449.

Career Opportunity
EARN COLLEGE DEGREE ONLINE. *Medical, *Business, *Criminal Justice. Job placement assistance. Computer available. Financial Aid if qualified. SCHEV certified. Call 888-220-3977 www.CenturaOnline.com

Educational
ALLIED HEALTH career training - Attend college 100% online. Job placement assistance. Computer available. Financial Aid if qualified. SCHEV certified. Call 800-481-9409 www.CenturaOnline.com

For Sale
Roses are red, Violets are blue, Mid-America Piano has a piano for you! Feb 1st - 14th save on more than 100 pianos! 800-950-3774

piano4u.com

Help Wanted

Exp. Flatbed Drivers: Regional opportunities now open with plenty of freight & great pay! 800-277-0212 or primeinc.com

Help Wanted/Truck Driver
"You got the drive, We have the Direction" OTR Drivers APU Equipped Pre-Pass EZ-pass Pets/passenger policy. Newer equipment. 100% NO touch. 1-800-528-7825

Special Events
RED GREEN LIVE Experience this hilarious one-man show. Sat., May 19th, 7pm, Wichita Orpheum Theatre. For tickets call 316-755-7328 or purchase online at www.selectaseat.com. www.redgreen.com

CARD OF THANKS

THANK YOU very much whomever bought the Family Membership to the Goodland Activities Center for my boys and I. It is very much appreciated! -Kendall Helton and boys.
G 2/1-2/1

There are no words that could express our deepest gratitude to our family, friends and medical personnel in Norton and Good Samaritan Hospital for the care and love and support given to us during Linda's surgery and recovery. We thank you for doing our chores, making us meals, visits, flowers, cards, well wishes, healing prayers and masses. But most important, your continued prayers, love, support and friendship. God bless each of you as He has blessed us by having you in

our lives. - Gary and Linda Matson
N 2/1

AUCTIONS/AUCTION SERVICE

Brown's Consignment Auction Sunday, Feb. 5th, 10 a.m. Hoxie 4-H Building. Wide selection of items consigned. Indian pottery, belt buckles, several (wheat pennies, teens - 40's, Indian Head pennies 1800's, large cents 1900) Enjoy an auction before the game! Next Auction, March 4th. Evenings 785-675-3767 Mickey Brown.

Tag Sale for the Max Pickerill Estate. Saturday, February 4, at 340 S. School, Colby, KS. 9 a.m. to 5 p.m. CST. Selling will be: household goods, furniture, pictures, riding mower, trailers, lumber, TV's, washers/dryers, refrigerator, records, shampooer, sweepers, antiques, and much more!

McEwen Auction-Duane-Darlene. 601 East Holme, Norton, Kansas 67654, Phone 785-877-3032. Experienced in all types of Auctions.
N tfn

Kansasland Realtors Auction Service, Land and Farm Equipment. Call Larry Riggs at 785-874-4776 or 785-543-4440.
N tfn

CHILD CARE

Lisa's Little BusyBee Group Daycare home now has openings. Newborn to 5. Call 785-443-1599.
- G 2/1 -

Kids Korner Day Care openings for infants to school age. Special rates for 2. Call 785-460-7990.

NOTICES

This ad shall serve as official notice that the Goodland Police Department is currently in possession of the following vehicles: 1990 Geo Metro, VIN 2C1MR2461L60199212, owned by CW Auto Sales; 1997 Mercury Sable, VIN 1MELM50U6VA614245, owned by Pamela Hash; 2000 Dodge Caravan, VIN 2B4G-P44G4YR674952, owned by Richard Eli; 1989 Chevrolet Corsica, VIN 1G1IT5410-KE278562, owned by Sergio

Gallardo. These vehicles have been impounded and are currently stored in the Goodland Police Department Impound Lot. These vehicles will be sold at public auction to the highest bidder for cash if the owners of said vehicles do not claim them by Monday, February 13, 2012. In order to claim said vehicles, the owners must pay removal and storage charges, as well as any publication costs incurred by the Goodland Police Department. Anyone wishing to claim ownership of any of the above noted vehicles should contact the Goodland Police Department at (785) 890-4570. Claims may also be made in person at the Police Department,

which is located at 204 W. 11th Street.

Shower invitation for Rachel Sowers, bride of Bill Linin. Monday, January 30, 2012, from 7-9 p.m. CT at Wesleyan Community Fellowship Hall, Bird City, KS. Bring your favorite recipe!
G 1/25-1/25

Winter Clearance Sale in progress at Plum Creek Ltd., downtown Colby. Missy, Women's & Men's apparel.
- C 1/18-2/1 -

Landowners: Let us help you lease and manage your deer hunting property. www.huntoca.com 308-882-7770 SF 12/14-02/8

NOTICE TO THOMAS COUNTY TAXPAYERS

It is your responsibility to file your Personal Property Assessment with the County Appraiser's Office each year. Reportable items include: Farm Trucks, Trailers, Mopeds, Dirt Bikes, ATV's, Camping Trailers, Boats, Airplanes, Mobile Homes, Golf Carts, Jet Skis, Snowmobiles, and Business Equipment & Fixtures. Real Estate improvements or structural changes to buildings must also be reported. The filing deadline is the same for Individuals, Businesses, and Corporations. Due date is on or before March 15, 2012. The deadline will be observed and penalties imposed as directed by law. We don't like imposing penalties any more than you like paying them. PLEASE FILE EARLY. If you previously had property to declare, the forms were mailed in January. Otherwise, assistance will be provided at the Appraiser's Office in the basement of the Courthouse in Colby from 8 a.m. to 5 p.m. Monday through Friday.

WINDMILL ANGUS RANCH

Super BULL Monday!!
38th Annual Production Sale
Mon., Feb. 6, 2012
1:00PM (MST)

At the ranch - Haigler, NE - 2 Miles East on US Hwy 34
SELLING 310 HEAD
40 Coming 2-Year-Olds
20 Fall Yearlings
50 SPRING COMING YEARLINGS
50 FANCY REG. OPEN HEIFERS
150 COMMERCIAL OPEN HEIFERS

MANY TOP SONS SELL
ONEILLS RENOVATION, ONEILLS LUCKY BOY, WOODHILL MAINLINE, H A IMAGE MAKER 0415, LCC NEW STANDARD, MOGCK WHISPERING WIND 584 AND MORE!

Watch Online @
www.WindmillAngus.com
DON'T MISS THIS SALE!!
JOAN OR ALEX PETERSON
31820 Hwy 34 • Haigler, NE 69030
Visit us on the web at www.WindmillAngus.com
For more information on this sale call 308-297-3368 or Email Windmillbulls@bwtelcom.net



DIXSON FARMS INC. Simmentals

Private Treaty Sale and Open House
February 18, 2012

Selling:

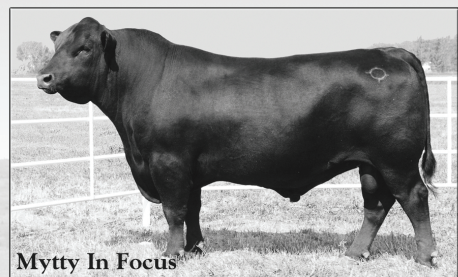
24 Yearling Bulls
10 Coming 2-year-olds

Carol Dixon, Kevin Dixon & Lyle Dixon DVM
13703 Beaver Creek Rd. • Atwood, KS 67730
785-626-3744 • drlyle@live.com

Visit us on the web to see more pictures and sale updates

www.dixonfarms.com

Your Western Kansas source for SimGenetics



Mytty In Focus

An outstanding set of black bulls featuring sons of DX Thunder, Olie, In Focus and Net Worth.

Purebred & SimAngus Bulls



DX Wonderboy

ASA# 2515775
EPDs: 8 -3 29 67 4 11 26
Ten Red Bulls featuring a purebred DX Wonderboy x Quorum herd bull prospect.
Other featured sires include Beefmaker and HXC Conquest.

HomeLand REALTY AUCTION
(785) 462-8255
www.HomeLandRE.com
An Affiliate of United Country

Pat Sloan (785) 443-3261
Marilyn Meyer (785) 462-2703
Toni Lindberg (785) 443-4032
Rock L. Bedore (785) 443-1653
Tom Harrison (785) 443-0136
Jerry Wycoff (785) 672-0429

1055 S. Range Colby, KS
www.HomeLandRE.com

READY FOR YOU



280 E. 4th
Big opportunity at small cost
Call our office today!

COMMERCIAL LISTINGS

2-6 acre lots located along I-70 frontage. Give Marilyn a call today!
280 E. 4th, Colby, KS Big opportunity at small cost. \$47,500 PRICE REDUCED Call our office today!
1690 W. 4th, Colby, KS Well maintained dental office with over 2,100 sq. ft. \$160,000 Give Marilyn a call today!
217 Center, Oakley, KS Our Place-restaurant with all equipment included. \$180,000 Give Jerry a call today!
1675 W. 4th, Colby, KS Use the warehouse and let the office lease help with payments. \$195,000 Call Pat for details!
111 W. 3rd, Oakley, KS 10,000+ square foot building with an excellent tenant & great cash flow. \$210,000 Call Rock!
464 Highway 83, Oakley, KS Colonial Steak House. Excellent opportunity, some owner financing available. \$350,000 Call Tom!
Commercial lot 6.7 acres adjacent to Wal-Mart with I-70 frontage. Colby, KS \$545,000 Call Rock!
Commercial lot 10 acres North of Interstate between Franklin & Country Club Drive East of Bourquins. (Can be split) Call Tom!

AG LAND LISTINGS

6403 Old Hwy. 40, Park, KS 41 acres grassland, three bedroom house & several out-buildings. \$149,500 Call Rock today!
160 acres Sherman County CRP & Cropland SW of Goodland. 2012 CRP payments & minerals to Buyer. \$220,000 Call Rock!
480 acres Logan County, KS CRP Land. \$624,000 Call Tom today!
480 acres Sherman County, KS Cropland Good productive land with a homestead. \$1,344,000 Call Tom today!
160 acres Sherman County, KS Irrigated Land - UNDER CONTRACT
320 acres Sherman County, KS Dryland - UNDER CONTRACT

OUT DISTANCE THE COMPETITION

Great job listings in Northwest Kansas!

- Full & Part-Time
- Temporary & Permanent
- Entry Level - Management
- Office & Professional
- Health Care & Teaching
- Retail & Industrial



Got a spot to fill?

To place your job listing in The Country Advocate, call your local newspaper today!

The Goodland Star-News
785-899-2338
The Colby Free Press
785-462-3963
The Oberlin Herald
785-475-2206

The St. Francis Herald
The Bird City Times
785-332-3162
The Norton Telegram
785-877-3361

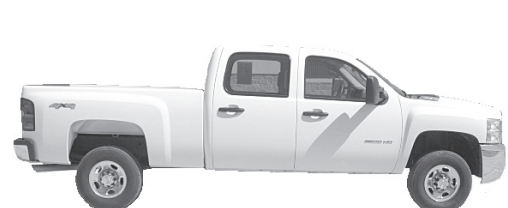
Are you looking to up grade your vehicle, but these last few days your credit card statements are coming in and you see ole Saint Nick spent a little more than you thought. Don't worry at Vince's GM Center we have a Great selection of pre-owned vehicles at a fair price.



2011 Buick Regal,
Silver, leather, sunroof



2010 Cadillac Escalade,
White Diamond, nav radio



2010 Chevy 3/4 ton crew cab,
white, 6.0 eng



2010 GMC Terrain,
Gray, leather, AWD

thought to ponder.....Why do we say something is out of whack? what is a whack, anyway?

VINCE'S GMCENTER

"Selling Cars for Years....Making Friends For Life."

We Look Forward To Serving You

1697 Rose Ave., Burlington, Colorado

www.vincesgmceneter.com

719-346-5541 • 800-546-5541