



**GARAGE SALES**

**Garage Sale - 901 Hartford,** Norton, Saturday, July 7, 8 a.m.-1 p.m. Girls clothes size 0-4T, women's clothing size 10-16. Men's clothing L-XL. Formal dresses. Toddler bed, cedar chest and other furniture, toys and miscellaneous. Cash only!

**Garage Sale - U.S. 36 Treasure Hunt** will be September 14, 15 and 16. Information must be turned into the Norton Chamber office by noon on August 29 in order to be on the map. Call 877-2501 for more information.

**AUCTIONS/AUCTION SERVICE**

**Kansasland Realtors Auction Service,** Land and Farm Equipment. Call Larry Riggs at 785-874-4776 or 785-543-4440.

N tfn

**CHILD CARE**

**Licensed Day Care** in Colby has openings for 6 wks to 4 yr olds. 785-269-7509. C 6/27-7/4

**NOTICES**

**Big Bang 4th of July** store-wide sale at Penn Ave. Boutique, 101 S. Penn, Oberlin, July 4th through 7th. Open at 9 a.m during sale for early shoppers. Enjoy 25% off on all items. See you there! (785) 475-5861.

O 7/4

**THE CITY OF St. Francis** will be taking bids on flooring

and interior work at the Scout Hut and roof and structural repairs at the Roadside Picnic shelters. Those interested in submitting bids should meet at the Scout Hut at 5 p.m. July

9, for details. SF 26-27c  
**6A Fireworks** June 27 - July 5, from 8 a.m. to midnight. 312 S. Missouri St., Selden, KS. Daily

give away. Great prices come check us out!!! C 6/27-7/4

**Inner Peace Massage by Amber** is now taking ap-

pointments. Located at the Movement Connection, Colby. Please call 785-462-0024. MEMBER AMTA C 6/20-7/11

**Decatur County Land Auction**  
**(160 +/- Acres)**

**Sellers: G.R. Addleman and Ruth Ann Ingold**

**Friday, July 20, 2012 - 4:00 p.m.**

**SALE LOCATION:** Oberlin American Legion, 114 S. Rodehaver Ave., Oberlin, KS 67749

**LAND LOCATION:** From Selden: 5 miles West on 130 N, 3 1/2 miles North on 130 W. From Oberlin: 13 miles South of Highway 36 on Highway 83, then 6 miles West, 4 miles South, 2 miles West and 1/2 miles north.

**LEGAL DESCRIPTION:** The Northeast Quarter (NE1/4) of Section Twenty-eight (28), Township Five (5) South, Range Thirty (30), West of the 6th P.M., Decatur County, Kansas.

**MINERALS:** Sellers are reserving 100% for 5 years and 50% for 5 years.

**TAXES:** \$358.00, based on 2011. Seller will pay 2012 taxes based on 2011 and prior years; Buyer pays 2013 and subsequent years.

**POSSESSION:** March 1, 2013 on open land, after harvest on 2013 planted wheat, 1/3 of 2013 wheat going to buyer. Buyer pays 1/3 of fertilizer on 2013 wheat.

**FSA Information:** Cropland Acres 142.7

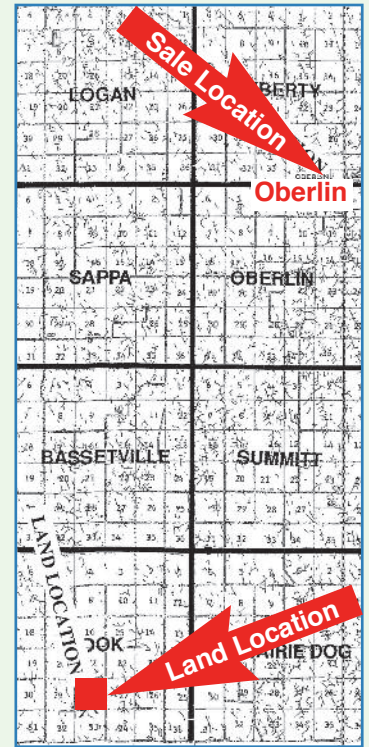
	Yields Direct	Base
Wheat	35	37.7
Corn	50	13.9
Sorghum	45	47.8

Survey will be furnished to determine the boundary.

**TERMS:** 10% Down day of sale, balance at closing with certified funds, on or before August 20, 2012.

**AGENCY:** Johnson Realty, Inc. and its Agents are representing the Seller and not representing the Buyer. **Announcements day of sale take precedence over printed material. Not responsible for accidents.**

**AUCTIONEER'S NOTE:** This is a very productive quarter section and well-maintained.



CHECK OUT OUR WEB SITE AT: [www.johnson-real-estate.com](http://www.johnson-real-estate.com)

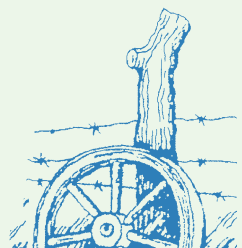
**Johnson Realty, Inc.**

122 South Penn, Oberlin, KS 67749 • Roberta Johnson, Broker • Lynn A. Johnson, Associate Broker/Auctioneer

Call Lynn A. Johnson for sale bill or information: 785-475-2785 - Mobile: 785-475-8514

Joe D. Green, Salesperson/Auctioneer Roger Emigh, Salesperson/Auctioneer Randy Ostmeyer, Salesperson  
David Juenemann, Salesperson Dianne Bremer, Oberlin, Salesperson Michael Wilson, Salesperson

[www.midwestauction.com](http://www.midwestauction.com)



**DOOR & WINDOW REPLACEMENTS**  
**SEAMLESS RAIN GUTTERS**  
**GENERAL CARPENTRY/REPAIRS**  
**Ron Lucke**  
**CUSTOM BUILDING**  
**(719) 346-8840**  
**CELL: (719) 349-8840**