

**You're in Great Company!**  
We need your supervisory experience! ARAMARK Correctional Services, the nation's leading provider of correctional food service, is looking for full time Food Service Supervisor(s) Norton Correctional Facility. Leadership skills necessary, Food Service experience a plus. We offer competitive wages attractive benefits, and opportunities for growth. Submission to a background check and drug screen is required. To join our team, please apply in person to Norton Correctional Facility RR1 Norton, KS 67654. 785-877-6702 EOE/M/F/D/V. N 9/19

**Grass Pasture wanted to rent,** Adam Jones, 785-332-6206. sf 47tfn

**Responsible couple** (with dogs) looking for a home to own/rent outside city limits in Goodland, KS. We long for the tranquil peace and quiet of country life, and would be willing to do maintenance if needed. You may call us at (785) 821-3578 or (785) 821-0401. G tfn

**Junk batteries, non-ferrous metals** and iron. Darrel Bowen. Phone 785-899-2578. G tfn

**SERVICES**

**Call us before you pay** your next insurance premium. American Family Insurance - Rita Peters Agency - Colby 785-462-8246. C 1/25-TFN

**STURGEON BROTHER'S** Haying Service. Give us a call for all your haying needs. Reasonable rates. 785-332-4902 Isaac. 785-772-1937 Trevor. 785-734-2210 Home. SF 36-38

**Custom Swathing and Baling.** Late model JD equipment can go out to 30 miles from Gem, KS. 785-443-1777. C 8/1-9/19

**Court Services Officer I position.** Graduate of accredited four year university with major course work in a related field. Full-time position, Grade 22/ Step A. Send resume and completed Kansas Judicial Branch application form to Court Services, P.O. Box 70, Norton, KS 67654, by 5:00 p.m. on Friday, September 21, 2012. Call 785-877-5775 if need more information. EOE. N 9/26

**Full-time Dietary Aide** needed at Logan Manor. Excellent benefits. \$9.00 per hour. Apply in person to Patty Fisher. EOE N 9/19

**WANTED**

**Wanted: Failed Milo** in northern Thomas or southern Rawlins County to swath & bale on shares or buy by the acre. 785-462-7825. C 9/19-9/26

**Stump grinding -** (785) 475-4100. O 6/27 tfn

**CAT'S TNT for jewelry, material, vinyl graphic designs, massages, quilting, Fed-EX**

and UPS shipping and more! Stop by 1018 Main, Goodland, or call (785) 890-2287 for more information. G 3/28-tfn

**Hickert Enterprises LLC-** Windmill repair and service. Tree trimming and removal. (785) 475-2729. O 2/15-12-24

**Experienced with texturing,** painting, cleanup/removal of clutter. Experience with Rental management experience. Have 16 ft. car trailer for rent. 785-462-5861. C 3/25-TFN

**Tired of dodging roof leaks** every time it rains? Let Murray Roofing end the bucket brigade! Experienced in installing all types of commercial roofing systems, TPO, EPDM, Elastomeric coating, Torch-down, and Modified, Perfect for any flat or low-sloped roof and Various warranty options to fit every need. Call Murray Roofing an authorized

Duro-Last Contractor today for your free estimate at 785-462-6908, 785-443-5347 or 785-443-1339. C 9/14-TFN

**Abel Tree Service**-Fully insured, free estimates, stump grinder, bucket truck. 785-871-7275. Snow removal available. N tfn

**Superior Flooring & Furniture,** Burlington, CO. 14,500 sq. ft. showroom! Carpet, ceramic tile, vinyl, appliances, furniture and bedroom sets to list a few! Check us out at www.superiorflooringandfurniture.com. 360 14th St., Burlington, CO (719) 346-7579. G 5/4-tfn

**Dan is back!** Dan Geschwentner. Small remodeling and repair jobs. Call 785-443-3673. C 2/3-TFN

**ASHLEY FURNITURE TEMPUR-PEDIC BEDDING AT COLBY FURNITURE AND**

HOME STORE, COLBY, KS. (785) 460-6311. G 10/21-TFN

**Window Washer at Large:** Your best choice for clean windows since 2005. Residential, Commercial. Wood frame window restoration, house painting and carpet cleaning. 785-871-7696. N tfn

**Graham Tree Spading Services.** 785-202-0963. Buy a tree from us or find your own. We'll move it! N tfn

Jacobs Service, your authorized Traeger Grill dealer. See our selection of grills, pellets, rubs and spices at West Highway 36, Norton. Pellets are \$13.50 per bag EVERY DAY! N tfn

**Allen's Handyman Service** - Allen and Cindy Kindall have tools will travel! No job too large or too small. Honey do lists welcome. Call 785-874-4601 or 785-202-0499

or 785-202-1139. N tfn

**Septic Tank Pumping.** 10-point inspection, septic tank camera, maintenance contracts, licensed by NWLEPG. Call SEPTIC TECH at 785-871-TECH (8324). N tfn

**Septic Tanks Pumped** and systems installed. Call Logan Septic and Water. 785-543-7772. N tfn

**PETS**

**Registered puppies for sale.** 1 male Shiba Inu, black and tan. 1 white American Eskimo. Reasonable prices. Shots up to date. Call (785) 626-4219. G 9/19-9/26

**FREE TO GOOD HOME:** 5 week old female calico kitten. Blue/gray eyes. First set of shots done. Call (785) 821-3910. Goodland. G 9/19-9/26

**Cash 4 Junkers**  
Will pay top dollar for your unwanted, totaled or junked vehicles. Cars, vans, pickups or trucks. Also interested in other metals. Call 785-332-7046, Jett Fromholtz, St. Francis, Ks.

**D&R PUMP SERVICE, LLC**  
Domestic, Stock, Windmill, Solar, Submersible, Irrigation, Repair and Sales.  
With over 30 years of experience!  
Ron Shipley - (785) 675-1422 state licensed Kansas and Nebraska member of the Kansas Groundwater Association  
Devan Castle (785) 657-7217

**SPECIAL SPECIAL SPECIAL**  
**\$9.99 Storewide Sale**  
- Excluding Formal Wear -  
**Amy's Fashions**  
Red Roof Mall 10 a.m. - 6 p.m.  
I-70 & S. Range, Colby Monday - Saturday

**See Our Selection at waltermotorco.com**  
**Walter Motor Company**  
2 Blocks West of State St. (U.S. 283) on Washington St., Norton, KS  
**1-800-479-3112 or 785-877-3112**  
Home Phone: Norm Walter (785) 877-3159 or Curt Walter (785) 877-5679  
**We Can Fix You UP! Full Service Shop with 3 Technicians to Serve You!**



**2011 Ford Taurus SEL** - 4 door front wheel drive, heated leather seating, dual auto. temp. control, Sirius radio, advance trac, and more! Gold leaf metallic, a gorgeous comfort sedan, 8,340 miles.

**2011 Lincoln MKZ** - One in Ingot silver metallic with 12,169 miles, heated and cooled leather, panoramic moon roof, navigation, rear parking system, dual zone temp, Sirius radio, sync system and much more! And one in red candy metallic. Also has all wheel drive, mileage 15,285.

**2010 Ford Escape** - The popular SUV with V6, FWD, moon roof, leather, full power, only 16,000 miles on this beauty in white suede metallic.

**2010 Lincoln MKS** - It is the top of the line Lincoln with all the luxury equipment and all wheel drive, cinnamon metallic with only 18,500 miles

**2010 Ford Focus** - The popular gas saving 4 door, AC, power windows and locks, cruise satellite radio, 23,000 miles.



**2008 Pontiac G6-GT** - 3.5 V-6, moon roof, heated leather seats, OnStar, adjustable pedals, rear spoiler, outstanding, 4 door, 35,000 miles.

**2008 Dodge Grand Caravan SXT** - 3.8 V-6, quad seating, power sliders, power lift gate, rear AC, very clean, 77,000 miles.

**2007 Ford Mustang Convertible** - WOW! - What a beauty! Leather Shaker stereo system, rear spoiler, V-6, 80,000 miles.

**2007 Ford 500** - 3.0 V-6, FWD, leather seats, dual power seats, alloy wheels, only 36,000 miles on this comfort 4 door.



**2007 Ford Edge SEL** - Heated leather, auto. temp. control, deluxe wheels and MORE. We have 2 of these, one front wheel drive, one AWD, double sharp, 61,000 miles.

**2006 Ford Taurus SE** - 4 door, V-6, cruise, tilt, power windows and locks, 117,000 miles.

**2005 Ford F150** - 4 door super cab, Lariat trim, 5.4 V-8 4x4, leather, moon roof, alloy wheels, reverse alarm, metallic maroon with matching fiberglass topper, exceptionally clean, 53,000 miles.

**2004 Buick LeSabre Limited** - 4 door, full power, leather. An A-one 4 WD, leather and loaded with extras, 80,000 miles.

**2003 Honda CRV** - Small SUV - All wheel drive, an extra nice 130,000 miles, 4 cylinder.

**2002 Ford** - The popular Explorer model, V-6, 4x4, full power.

**2002 Buick LeSabre** - 4 door, 3.8 V-6, full power, very clean.

**2000 GMC 1500** - 4 door extended cab, V-8, 4x4, nice, clean pickup.

**1998 Lincoln Town Car** - Exceptionally clean, luxury sedan, 117,000 miles.

**COMING IN**

**2010 Mercury Milan** - Premier trim, V-6, moon roof, heated leather, rear view camera, rear spoiler, Sirius 12 speaker radio, and MORE - white platinum metallic, immaculate, only 12,523 miles.

See our entire selection at www.waltermotorco.com

**Decatur County Land Auction (480 +/- Acres)**

**Sellers: Neil and Donna Severns**

**Friday, Oct. 5, 2012 - 4:00 p.m.**

**SALE LOCATION:** Oberlin American Legion, 114 S. Rodehaver Ave., Oberlin, KS 67749

**LEGAL DESCRIPTION:**

- Tract I:** North one-half of Section Seven (7), Township Four (4) South, Range Twenty-seven (27), West of the 6th P.M., Decatur County, Kansas.
- Tract II:** West one-half of the Southeast Quarter (W1/2SE1/4), Section Twenty-four (24), Township Three (3) South, Range Twenty-seven (27) West of the 6th P.M., Decatur County, Kansas.
- Tract III:** West one-half of the Northeast Quarter (W1/2NE1/4), Section Twenty-five (25), Township Three (3) South, Range Twenty-seven (27), West of the 6th P.M., Decatur County, Kansas.

Each tract will be sold separate and not tied together.

**LAND LOCATION:** N1/2 of 7-4-27. From the intersection of U.S. Highway 36 and U.S. Highway 83, Oberlin, KS, go 8 miles South on U.S. Highway 83, 8 miles East, 1/2 mile North.

**W1/2SE1/4 of 24-3-27 and W1/2NE1/4 of 25-3-27.** Six miles North of Jennings, KS on road 2400, then 1/2 mile West on O Lane road.

**TERMS:** 10% down day of sale, balance at closing with certified funds. All funds will be held by Decatur County Title and Abstract escrow account.

**CLOSING:** Closing on or before November 5, 2012

**MINERAL RIGHTS:** Sellers are reserving 1/2 of minerals for 10 years or as long as production exists, if any, non-participating in lease moneys.

**CROPS:** Subject to tenants rights. Sellers are reserving all crops for 2012. Buyers will receive 1/3 of wheat for 2013, if any, and pay 1/3 of fertilizer costs.

**POSSESSION:** March 1, 2013 on grassland and open ground and after 2013 if any wheat is planted for 2013.

**TAXES:** Sellers will pay all of 2012 taxes and prior years. Buyers will pay all of 2013 and subsequent years. **Taxes for 2011: Tract I - \$443.04; Tract II - \$50.64 and Tract III - \$63.06.**

**TITLE EVIDENCE:** Title insurance will be issued with costs shared one-half by Sellers and one-half by Buyers.

**INSPECTIONS:** Each bidder is responsible for conducting their own inspections. Johnson Realty, Inc. and its agents are making no warranties about the property.

**EASEMENTS:** This sale is subject to all right-of-ways and easements, whether recorded or not, and to oil and gas leases of record, if any.

**FSA Information:**

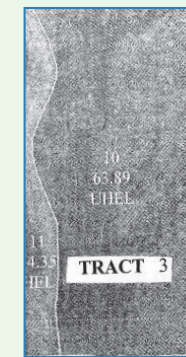
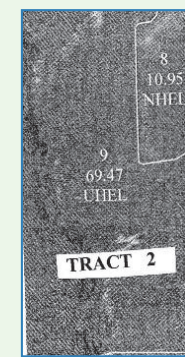
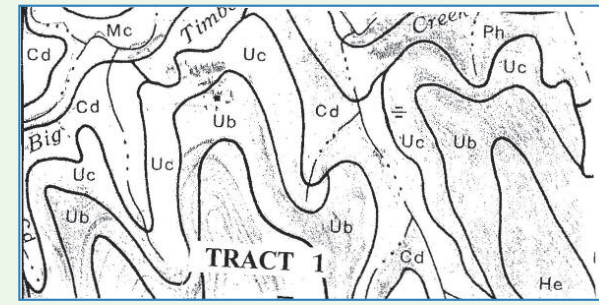
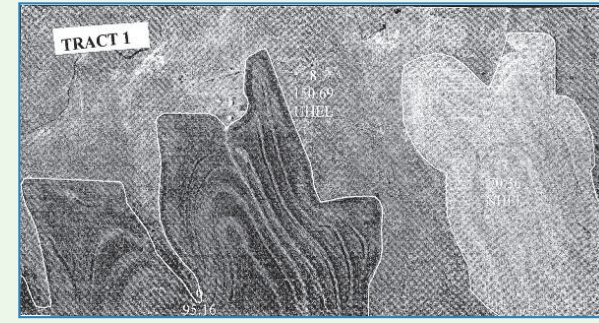
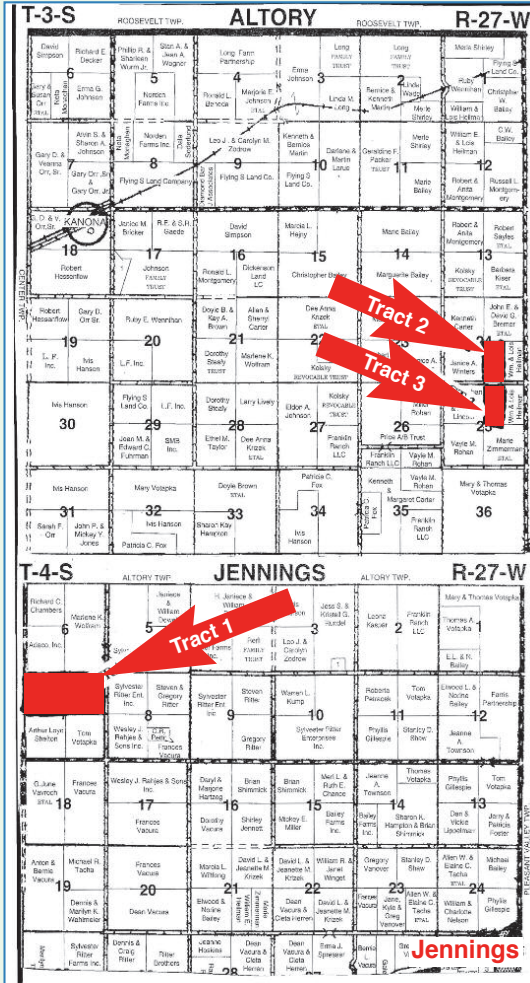
Tract	Farm land	Crop land	Bases	Yield
Tract I: Farm land - 316.2				Crop land - 165.5
	Wheat		56.7	42
	Corn		42.7	75
			1.5	47
Tract II: Farm land - 80.4				Crop land - 11.0
	Wheat		3.9	42
	Corn		3.0	75
			0.1	47
Tract III: Farm land - 78.3				Crop land - 14.3
	Wheat		5.1	42
	Corn		3.8	75
			0.1	47

For more information or a tour of the properties call Lynn A. Johnson at 785-475-2785 or cell 785-475-8514.

**AGENCY:** Johnson Realty, Inc., its Agents and Representatives are representing the Sellers and not the Buyer(s).

**Announcements day of sale take precedence over printed material. Not responsible for accidents.**

**AUCTIONEER'S NOTE:** These properties have been well-maintained, with good terraces, a lot of newer fences and the grassland not over-grazed.



**CHECK OUT OUR WEB SITE AT: www.johnson-real-estate.com**

**Johnson Realty, Inc.**

122 South Penn, Oberlin, KS 67749 • Roberta Johnson, Broker • Lynn A. Johnson, Associate Broker/Auctioneer

Call Lynn A. Johnson for sale bill or information: 785-475-2785 - Mobile: 785-475-8514

Joe D. Green, Salesperson/Auctioneer Roger Emigh, Salesperson/Auctioneer Randy Ostmeier, Salesperson  
David Juenemann, Salesperson Dianne Bremer, Oberlin, Salesperson Michael Wilson, Salesperson

[www.midwestauction.com](http://www.midwestauction.com)