

**WANTED**

**WANTED: FARM DOZER WORK.** Pond repair, farmstead clean-up, etc.. Call (785) 675-8974.

**Grass Pasture wanted to rent,** Adam Jones, 785-332-6206.

**Crafters Wanted** for Arts and Crafts Day, November 10. \$10 per booth. Contact: Ramona at Norton Community Center, 785-877-5352.

**Wanted No Till** or conventional wheat acres to drill. Call LeRoy Reitcher, 785-657-1043.

**Junk batteries, non-ferrous metals** and iron. Darrel Bowen. Phone 785-899-2578. G tfn

**SERVICES**

**Custom Swathing and Baling.** Late model JD equipment can go out to 30 miles

from Gem, KS. 785-443-1777. C 10/10-10/31

**WILL DO** stump grinding, Leon Brethower 785-734-2702. SF 40-41\*

**Trenching and General Dirt Work Services.** Willing to Travel. For Quotes, Contact Brad Leitner, Atwood, KS. 785-626-2166 or bradmandyleitner@hotmail.com. G 10/10-11/10

**Bixenman Construction** remodels additions, kitchens & baths and handyman services 785-443-3181 davebixenman@rocketmail.com. C 9/26-10/17

**I specialize & analyze** the situation surrounding the environment. Pines, Deciduous, Evergreens, Shelterbelts, Fruit Trees, Cleanup, Removal, Nurseryman, Gardening, Landscaping, Shrubs & Yard Care. Dave's Tree Service 785-443-0994.

**Dirty Guns?** Professional cleaning and repair, Oakley, KS. 785-269-7334 or 785-671-1212. C 9/26-10/10

**Call us before you pay** your next insurance premium. American Family Insurance - Rita Peters Agency - Colby 785-462-8246. C 1/25-TFN

**STURGEON BROTHER'S** Haying Service. Give us a call for all your haying needs. Reasonable rates. 785-332-4902 Isaac. 785-772-1937 Trevor. 785-734-2210 Home. SF 36-38

**Stump grinding** - (785) 475-4100. O 6/27 tfn

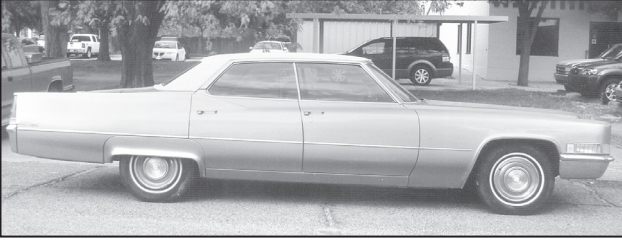
**CAT'S TNT for jewelry, material,** vinyl graphic designs, massages, quilting, Fed-EX and UPS shipping and more! Stop by 1018 Main, Goodland, or call (785) 890-2287 for more information. G 3/28-tfn

**DINKEL**  
**GAS COMPANY LLC**  
**HENRY DINKEL (OWNER/MANAGER)**  
**OFFICE: (785) 852-4886 • CELL: (785) 821-0518 • SHARON SPRINGS, KS**  
*We deliver propane throughout NW Kansas and Eastern Colorado.*  
*We pride ourselves with dependable sales and service.*  
*Locally owned and operated with over 40 years experience to better serve your propane needs.*

**ESTATE OF THOMAS L. HILLERY PUBLIC AUCTION**  
 October 15, 2012 • 10 a.m. CST • LEVANT, KANSAS  
 SELLING REAL ESTATE AND 1969 CADILLAC

**PARCEL ONE**  
 Lots Twenty-one (21), thru Lots Thirty (30), Block Seven (7), Town of Levant, Thomas County, Kansas.  
 Parcel One is located one block south of Fourth Street (old Highway 24) bordering the corner of Third Street and Main Street. There is a house and a well on the property, but have been abandoned for many years. The property has been cleared of all vehicles.

**PARCEL TWO**  
 A tract of land in the Southwest Quarter (SW 1/4) of Section Two (2), Township Eight (8) South, Range Thirty-Five (35) West of the 6<sup>th</sup> P.M.  
 Parcel Two is a triangular lot that lies immediately south of the railroad tracks and on the north side of Fourth Street (old Highway 24). It measures approximately 425' X 417' X 115'. There is a brick shop building, an old filling station building, and a steel round top Quonset. There is also a working water well. The Kansas Department of Health and Environment has removed or filled all underground tanks and filled all wells. The property has been cleared of all vehicles.



**VEHICLE**  
**1969 CADILLAC** - VIN#B9271451, 4-door hard top Sedan deVille. No rust, clean and in very good shape. In good running condition. V-8 472 cubic engine 102,000 miles.

**ABSOLUTE AUCTION**

Sale location at parcel 2, Levant, KS.  
 All Sales Are As Is, and FINAL.

Home Range Real Estate, Inc. And Gillum Auction are not responsible for theft or accidents, or injury.

Terms: Cash, Good Check w/verification of funds. All payments made in fully day of sale.  
**SELLER: Bruce Flipse, Executor, Estate of Thomas E. Hillery • 785-443-2330**

**HomeLand REALTY AUCTION**  
 (785) 462-8255  
 www.HomeLandRE.com

Pat Sloan (785) 443-3261  
 Marilyn Meyer (785) 462-2703  
 Toni Lindberg (785) 443-4032  
 Rock L. Bedore (785) 443-1653  
 Tom Harrison (785) 443-0136  
 Jerry Wycoff (785) 672-0429

**1055 S. Range - PO Box 508 Colby, KS**

**QUIET NEIGHBORHOOD**  
  
**\$129,900**  
 445 Lawrence  
 4 BR/2 Bath  
 Call Toni today!

**MOVE IN READY**  
  
**\$89,500**  
 1175 Summer Sun  
 4 BR/2 Bath  
 Give Rock a call!

135 E. Walnut (Lot)	\$4,500
224 Price, Oakley	CONTRACT
201 Edgerton, Oakley	<b>SOLD</b>
621 Cornell, Oakley	\$59,500
270 W. Webster	CONTRACT
480 S. Chick	CONTRACT
135 N. Grant-Exclusive	<b>SOLD</b>
280 N. Mission Ridge	CONTRACT
1060 E. 8th	CONTRACT
125 E. Walnut	CONTRACT
1175 Summer Sun	\$89,500
340 S. School	<b>SOLD</b>
685 W. Cherry	CONTRACT
445 Lawrence	\$129,900
1365 E. 8th	<b>SOLD</b>
122 W. Park, Bird City	\$149,500
805 E. 2nd, Oakley	<b>SOLD</b>
705 S. Range	CONTRACT

**COMMERCIAL LISTINGS**

2-6 acre lots located along I-70 frontage, Colby, KS. Give Marilyn a call today!  
 1690 W. 4th, Colby, KS Well maintained office with over 2,100 sq. ft. \$150,000 Call Marilyn!  
 1675 W. 4th, Colby, KS Use the warehouse and let the office lease help with payments. \$195,000 Call Pat!  
 111 W. 3rd, Oakley, KS 10,000+ sq. ft. building with excellent parking. \$185,000 Give Rock a call today!  
 464 Highway 83, Oakley, KS Colonial Steak House. Some owner financing available. \$340,000 Call Tom!  
 Commercial lot 10 acres North of I-70 between Franklin & Country Club Drive East of Bourquins. (Can be split) Call Tom!

**AG LAND LISTINGS**

6403 Old Hwy 40, Park, KS 41 acres Grassland, 3 bedroom house with several upgrades. \$159,000 Call Rock!  
 480 Ac. Rawlins Cty., KS Cropland 15 North & 3 West of Levant. Immediate possession. All minerals to Buyer. **SOLD**  
 1200 Ac. Gove Cty., KS Grass, irrigated & dryland located 10 miles SE of Oakley, KS. \$1,456/Ac. **CONTRACT**

**GREAT SELECTION OF NEW & USED VEHICLES IN STOCK**

 2004 CORVETTE CONVERTIBLE Only 15,000 miles 8532A \$32,900	 2000 CORVETTE CONVERTIBLE 22,900	 1981 CORVETTE COUPE Only 58,000 miles 8080C \$11,950	 2004 BUICK LESABRE LIMITED 8420A \$12,900	 2004 BUICK LESABRE LIMITED Super Clean, Sharp 8274B \$8,900	 2002 BUICK LESABRE LIMITED 8464A \$7,950
 2002 FORD TAURUS SES Good Solid Car 8629A \$4,950	 1997 CHEVY LUMINA LS 8488A \$4,500	 2002 CHEVY CAVALIER 2,500	 1988 MERCURY COUGAR Clean 8619B \$2,500	 2008 CHEVY SILVERADO 1500 Crewcab, LT-Z71, 4x4 1106A \$26,250	 2007 CHEVY SILVERADO HD2500 Crewcab, LT, 4x4, Duramax 8565A \$26,900
 2003 CHEVY SILVERADO HD2500 Crewcab, LT, 4x4, Duramax 8393A \$16,995	 2004 CHEVY SILVERADO 2500 X-Cab, LS, 4x4 8394B \$12,950	 2002 CHEVY SILVERADO 1500 X-Cab, LS-Z71, 4x4 8363B \$8,995	 2001 CHEVY SILVERADO 1500 X-Cab, LS, 4x4 8457B \$8,000	 1995 CHEVY SILVERADO 1500 X-Cab, Clean, Solid Truck 8408D \$4,600	 1994 DODGE RAM 1500 STL, Laramie 8582B \$2,995
 2005 DODGE GRAND CARAVAN LS, 4x4 1104 \$6,950	 2002 FORD WINDSTAR 8000D \$4,995	 2012 CHEVY EQUINOX LTZ FWD, Navigation-Sunroof, Only 10,000 miles 8574A \$29,900	 2010 GMC TERRAIN SLT AWD, DVD-Sunroof 8314A \$28,550	 2005 CHEVY SUBURBAN 3LT-Z71, 4x4, DVD-Sunroof 8601B \$14,250	 2007 CHRYSLER PACIFICA TOURING AWD 8301B \$12,950
 2004 CHEVY SUBURBAN Z71, 4x4, DVD-Sunroof 8596A \$12,900	 KINZE 1040 GRAIN CART \$34,900	 GREAT PLAINS 2S-2600HD-26 DRILL \$34,900	 J & M 875 GRAIN CART \$18,900	 SUNFLOWER 1232-27 DISC \$3,500	 BAASCH & SONS DRIVE OVER PIT 10" Auger, HYD Drive, Tow Hitch \$895

**Harchelroad Motors Inc.**  
 WAUNETTA, NE  
 308-394-5555 • Toll Free 1-877-86-CHEVY  
 www.harchelroadmotors.com

**OPEN ALL DAY SATURDAY**  
 COME MEET OUR FRIENDLY STAFF

**GREAT SELECTION OF OVER 210 NEW & USED VEHICLES!**  
 GREAT SELECTION OF OVER 60 NEW & USED KRAUSE, SUNFLOWER, KINZE TILLAGE EQUIPMENT