

**SERVICES**

**Hickert Enterprises LLC-** Windmill repair and service. Tree trimming and removal. (785) 475-2729. O 2/15-12-24

**Experienced with texturing,** painting, cleanup/removal of clutter. Experience with Rental management experience. Have 16 ft. car trailer for rent. 785-462-5861. C 3/25-TFN

**Tired of dodging roof leaks** every time it rains? Let Murray Roofing end the bucket brigade! Experienced in installing all types of commercial roofing systems, TPO, EPDM, Elastomeric coating, Torch-down, and Modified, Perfect for any flat or low-sloped roof and Various warranty options to fit every need. Call Murray Roofing an authorized Duro-Last Contractor today for your free estimate at 785-462-6908, 785-443-5347 or 785-443-1339. C 9/14-TFN

**Abel Tree Service**-Fully insured, free estimates, stump grinder, bucket truck. 785-871-7275. Snow removal available. N tfn

**Superior Flooring & Furniture,** Burlington, CO. 14,500 sq. ft. showroom! Carpet, ceramic tile, vinyl, appliances, furniture and bedroom sets to list a few! Check us out at www.superiorflooringand-furniture.com. 360 14th St., Burlington, CO (719) 346-7579. G 5/4-tfn

**Dan is back!** Dan Geschwentner. Small remodeling and repair jobs. Call 785-443-3673. C 2/3-TFN

**ASHLEY FURNITURE** TEMPUR-PEDIC BEDDING AT COLBY FURNITURE AND HOME STORE, COLBY, KS. (785) 460-6311. G 10/21-TFN

Experienced Piano Teacher has openings for beginning, intermediate and advanced learners. Adults welcome. \$9.00 weekly. Half hour lessons in Norton. Call 785-874-8036. N 11/7

**C&C Construction,** dirt contractors, terracing, dozing and scraper work. Call Brian Cook, 785-567-7794 or Topper Cook, 785-874-8114. N 10/31

**Graham Tree Spading Services.** 785-202-0963. Buy a tree from us or find your own. We'll move it! N tfn

**Jacobs Service,** your authorized Traeger Grill dealer. See our selection of grills, pellets, rubs and spices at West Highway 36, Norton. Pellets are \$13.50 per bag EVERY DAY! N tfn

**Allen's Handyman Service** - Allen and Cindy Kindall have tools will travel! No job too large or too small. Honey do lists welcome. Call 785-874-4601 or 785-202-0499 or 785-202-1139. N tfn

**Septic Tank Pumping.** 10-point inspection, septic tank

camera, maintenance contracts, licensed by NWLEPG. Call SEPTIC TECH at 785-871-TECH (8324). N tfn

**Septic Tanks Pumped** and systems installed. Call Logan Septic and Water. 785-543-7772. N tfn

**PETS**

**Kittens up for adoption.** One male gray kitten, one female long haired orange. Call 785-462-6388. C 10/10

**3 female Chihuahua puppies.** 2 white and tan, 1 brown and white. \$100. (785) 386-4242. C 10/10-10/24

**BUSINESS/REAL ESTATE**

**New Skyline Double Section for Immediate Delivery!** This quality 3 Bedroom 2 Bath home is priced to Sell at \$59,900, delivery and set included. What are you waiting for? Call Countryside Homes for details at 1-800-621-6539 or 785-625-6539. G 10/3-10/10

**House in Oakley, water bed frame** - king size, home Kimball organ, 8 track player and tapes 785-672-2638. C 9/12-10/13

bedroom, 2 bath country home on 15 acres with horse corral, pasture, machine shed and grain bins . . . now \$169K, with 50% owner financing. View at: http://kansascountryhome4sale.com or call 800-440-0467. N tfn

**COMPLETE FITNESS CENTER FOR SALE!** Changing Lifestyles, 13th & Main, Goodland. Contact Pat Howe at (785) 890-7512 or (785) 821-2389 for more information. G 5/16-tfn

**REAL ESTATE SERVICES**

**Contact Owner/Broker** Larry Riggs at Kansasland Realtors for listings and sales private treaty or auction, 785-543-4440 or 785-874-4776. N tfn

**Make the Weiser Choice** - Contact Weiser Realty for all of your real estate needs at 785-877-2185. Jolene L. Weiser, Broker; Samantha M. Hager, Salesperson. N tfn

**FOR RENT**

**Small 3 bdrm, 1 bath house** with garage in Goodland. NO PETS. References & lease required. Call (785) 899-3436 and leave message. G 10/10-tfn

**New reduced price on 5 3 BEDROOM HOUSE** with

**Immaculate Conception Fall Festival**  
Leoville Parish Center, Leoville, KS  
October 14, 2012 2:30 p.m.

Come join the fun fellowship and friends. Bingo starts at 2:30 p.m. There will also be a roast beef and turkey dinner from 5-7 p.m. Adults \$7, kids 5-7 \$3, and kids 4 and under eat free. Come join all the other fun events we will be having.

Raffle  
Auction  
Games  
Religious Store  
CYO stand

Ad sponsored by The Bank

**Roofing & Construction**



Serving all of Western Kansas

(785) 470-7365

**Prairie Dog Control**



Control your Prairie Dogs with Rozal® this fall and have more grass this spring.  
**Donnie Sughroue**  
Bartley, Nebraska  
Cell (308) 350-3120  
Home (308) 692-3693

**ABSOLUTE LAND AUCTION**  
**160 ACRES CROPLAND**  
**THOMAS COUNTY, KS**

**Sellers:** Joan Kania, Jane McCain, D.J. Nelson & Shirley Vap

**WEDNESDAY, OCT. 31, 2012 @ 10:30AM, CDT**

**AUCTION LOCATION:** Farm & Ranch Auction Pavilion, 1/2 mile West of Colby, Kansas

**Legal Description:** SE/4 of 6-6-32

- 148.7 ac cropland  
Wheat base/yld - 100.6/33  
Grain Sorg base/yld -24.8/47  
Barley base/yld -5.3/38
- Immediate possession

Great cropland quarter that is nearly flat!

INTERNET BIDDING AVAILABLE!

For a brochure call or visit [www.farmandranchrealty.com](http://www.farmandranchrealty.com)

**FARM & RANCH REALTY, INC.**

1420 W. 4<sup>TH</sup> • COLBY, KS 67701

785-462-3904

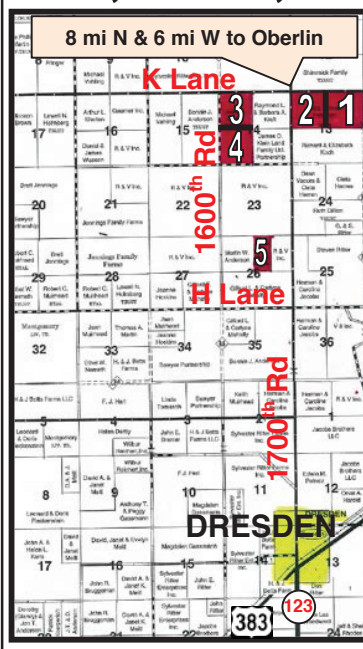
**DONALD L. HAZLETT**

Broker/Auctioneer

"When you list with Farm & Ranch, it's as good as SOLD!"

**720+/- ACRES CROPLAND & GRASS**  
**ABSOLUTE LAND AUCTION**  
**DECATUR COUNTY, KANSAS**

**SELLER: Julius & Helen Petracek Trust**  
**WED., OCT 24, 2012 @ 10:30 AM, CDT**



**AUCTION LOCATION:** The Gateway, Oberlin

Land will be offered in 5 individual tracts only - no combinations!

- TRACT 1: NE/4 of 13-4-28
- TRACT 2: NW/4 of 13-4-28
- TRACT 3: NW/4 of 14-4-28
- TRACT 4: SW/4 of 14-4-28
- TRACT 5: W/2NE/4 of 26-4-28

- 601 total acres cropland
- 112.0± acres grassland
- Mineral rights believed to be 100% intact and will transfer to the Buyer(s) at closing.
- Possession - March 1, 2013

This is one of the best farms in NW Kansas and Decatur County, Kansas.

INTERNET BIDDING AVAILABLE!

For a virtual tour & brochure visit [www.farmandranchrealty.com](http://www.farmandranchrealty.com)

**FARM & RANCH REALTY, INC.**



**MIKE BAILEY,** Listing Agent  
(785-678-8082) - Cell  
1420 W. 4<sup>TH</sup> • COLBY, KS 67701

Toll Free: 1-800-247-7863

**DONALD L. HAZLETT**  
BROKER/AUCTIONEER



"When you list with Farm & Ranch, it's as good as SOLD!"

2 car attached garage. Available in October. No smoking, references required. 785-332-2697. 785-332-4254. SF tfn

**4 bedroom house** with attached garage in Oberlin. (785) 475-4603 or (785) 475-3439. O 10/3-10/10

**GENERATORS FOR RENT:** 30kW and 2100 kW. Self-contained, trailer mounted. Single phase and 3 phase units. Call (785) 675-8974. G 10/3-11/3

**Downtown office space** available at 5th and Franklin. Call 785-462-3939. C 9/19-TFN

**BIRD CITY HOUSE** For Rent, 120 W. Third St., fully furnished, 3 bedroom/2 bath, sleeps 5 singles comfortably. Short Term- Day, Weekend, Weekly - Ideal for hunters, family groups. Call for available dates and rates!! Mark at 970-390-9169 or Mike 970-470-3001. SF 35-38

**Houses and apartments**

**Goodland, KS.** All sizes. Call for details. (785) 890-6538. G 6/20-tfn

**Roll off boxes.** Great for construction projects. Call for details. 785-443-1339. C 2/15-TFN

**Houses & Apartments.** Cole Real Estate in Goodland 785-899-2683. G tfn

**Consider living in an independent** apartment complex in Norton for people over 55 years of age. Garage, appliances and other conveniences. For information contact Nancy McGinnis, Administrator. 785-877-2601. N tfn

**FARM SERVICES/ EQUIPMENT**

**Machinery for sale** - 1845 Case skid loader with bucket 60HP, 2900 hrs. Clean, dry, good machine. \$10,000 cash or consider trade. No Sunday calls 785-626-9597. C 10/10-10/17

**Hometown Family Radio**  
with  
**7102.1 PURE ROCK**  
**105.3 COYOTE COUNTRY**  
bring you  
**THE ZONE 93.9**  
**McCook's HIT Music Station**

**YOST**   
530 E. Business US Hwy. 36 St. Francis, KS 67756  
Salesman - Brent Rueb  
800-524-9678 785-332-2188 yostford.com

**Score a Touchdown at The Built Ford Tough Event**

1983 GMC Suburban, 4x4, good hunting rig	\$2,495
1998 Chevy Tahoe 4WD, #T0869C	\$4,900
1999 Ford F-150 Lariat Super Cab	\$6,250
2001 Ford Windstar LX Van, 7 pass., #45384C	\$4,200
2001 Chevy Conversion Van, loaded, #T6612M	\$7,900
2003 Buick Lesabre, Leather, #T8153	\$5,600
2004 Toyota Scion XB, Great student car, #T5284B	\$4,995
2004 Volkswagon Touareg, low miles, #T1726C	\$16,825
2005 Ford F-250 XLT, Super Cab, #T1920A	\$16,500
2005 Chevy Silverado, K2500 HD, #50842B	\$13,900
2006 Ford Freestyle, Leather, 7-pass, #45384B	\$9,995
2006 Ford Crown Vic Interceptor pkg., #T4374M	\$5,900
2006 Ford F-150, 4x4 pkg., #T4374B	\$15,900
2006 Ford, S/C, 4x4, long box, Biege Cloth, #T3241	\$14,500
2007 Chevy 3500 HD, Ext. Cab, Diesel, long box	\$23,600
2007 Chevy K-2500 HD, gas, Crew, L. box, #T4551A	\$24,995
2007 Ford F-150 King Ranch, Crew Cab, 69K, #T6497B	\$27,000
2007 Honda Pilot, Fully loaded, #T9712A	\$20,250
2008 Chevy Equinox LTZ, AWD, Loaded, #T0586A	\$19,800
2008 Dodge 2500 Diesel, great shape	\$31,995
2008 Mercury Mariner, AWD, Leather, #27020A	\$13,500
2008 Ford Escape Limited AWD, Super Clean, #T5188A	\$13,500
2008 Ford Explorer XLT, Leather, Clean, #85233C	\$20,200
2009 Cadillac STS, loaded, #T2882A	\$28,250
2009 Nissan Altima, loaded, #22328A	\$16,800
2009 Ford F-150 King Ranch Crew #T6612A	\$31,000
2010 Chevy Cobalt LT, #T1798B	\$13,500
2010 Buick LaCross, T7062B	\$24,495
2011 Ford Edge Limited, #T8768A	\$30,000
2011 Chevy Impala LT, 34K, #06614B	\$21,000
2012 Ford Edge Limited, AWD, Leather	\$30,660
2012 Ford F-150 Crew XLT, 1,100 miles, #T9023A	\$36,500

View all of our inventory at [www.yostford.com](http://www.yostford.com)