

Dan is back! Dan Geschwenter. Small remodeling and repair jobs. Call 785-443-3673.

Graham Tree Spading Services. 785-202-0963. Buy a tree from us or find your own. We'll move it!

Graham Dirtworks, LLC - Offers Trenching Services for water lines, hydrants, electrical etc. Backhoe ser-

vices and skid steer mounted backhoe. General skid steer work etc. Willing to travel. For info call Mark at 785-543-4336.

Custom Tub Grinding. Self-contained tub grinder. Call Mark Kats, 785-973-8724. N tfn

Jacobs Service, your authorized Traeger Grill dealer. See our selection of grills,

pellets, rubs and spices at West Highway 36, Norton. Pellets are \$13.50 per bag EVERY DAY! N tfn

Allen's Handyman Service - Allen and Cindy Kindall have tools will travel! No job too large or too small. Honey do lists welcome. Call 785-874-4601 or 785-202-0499 or 785-202-1139. N tfn

(785) 475-2054. O 12/26-01/02

New reduced price on 5 bedroom, 2 bath country home on 15 acres with horse corral, pasture, machine shed and grain bins . . . now \$169K, with 50% owner financing. View at: <http://kansascountryhome4sale.com> or call 800-440-0467. N tfn

COMPLETE FITNESS CENTER FOR SALE! Changing Lifestyles, 13th & Main, Goodland. Contact Pat Howe at (785) 890-7512 or (785) 821-2389 for more information. G 5/16-tfn

Septic Tank Pumping. 10-point inspection, septic tank camera, maintenance contracts, licensed by NWLEPG. Call SEPTIC TECH at 785-871-TECH (8324). N tfn

Septic Tanks Pumped and systems installed. Call Logan Septic and Water. 785-543-7772. N tfn

PETS

Black miniature Chihuahua, male, housebroken, crate trained. \$200 OBO. Call (785) 821-0160. Goodland. G 1/2-1/2

BUSINESS/REAL ESTATE

For sale: 5 bedroom, 3 bath house, main floor laundry, office space, large kitchen with dining room, family room with wood burning stove, fenced back yard, great location in Oberlin. Call Deb at

Homes for sale: Home on five acres with several out-buildings, 12 miles south of Norton. A rock home on eight acres with several out-buildings, 15 miles south of Norton. Call Larry Riggs with Kansasland Realtors at 785-874-4776. N tfn

REAL ESTATE SERVICES

Contact Owner/Broker Larry Riggs at Kansasland Realtors for listings and sales private treaty or auction, 785-543-4440 or 785-874-4776. N tfn

Make the Weiser Choice - Contact Weiser Realty for all of your real estate needs at 785-877-2185. Jolene L.

Weiser, Broker; Samantha M. Hager, Salesperson. N tfn

1 bedroom, kitchenette, all utilities and cable paid, no deposit. \$650/month. Goodland. Call (785) 443-1863. G 1/2-1/2

FOR RENT

320 ACRES GRAHAM COUNTY, KS CROPLAND & GRASS PLUS MINERAL RIGHTS & ROYALTY PRODUCTION
"Multi-Parcel" **ABSOLUTE LAND AUCTION**
TUES., JAN. 15, 2013 @10:30 AM, CST

AUCTION LOCATION:
FORMER ELKS LODGE, HILL CITY, KS

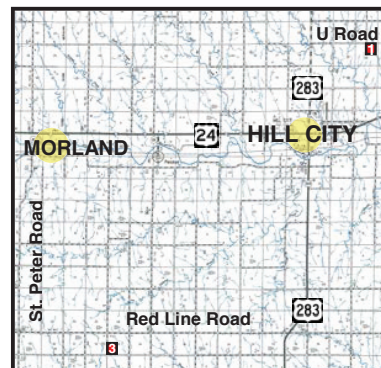
This property will be offered in 4 tracts. Due to separate ownership, Tracts 1 and 2 will be offered in combination and Tracts 3 and 4 will be offered in combination.

LEGAL DESCRIPTIONS:

- TRACT 1:** NE/4 of 29-7-22 (surface rights only)
- TRACT 2:** Mineral rights in and under Tract 1 PLUS royalty prod from Webb 2-29 oil lease
- TRACT 3:** SW/4 of 33-9-24 (surface rights only)
- TRACT 4:** Mineral rights in and under Tract 3

Tract 1 offers cropland and pasture
Tract 3 is prime cropland
Tracts 2 and 4 offer opportunity to purchase mineral rights and royalty production

SELLERS: Mark E. & Janet K. Niehaus and William & Karen Spies



INTERNET BIDDING AVAILABLE!

For virtual tour & brochure visit www.farmandranchrealty.com

FARM & RANCH REALTY, INC.

SCOTTY LEGERE, Listing Agent (785-650-9970)
1420 W. 4TH • COLBY, KS 67701
Toll Free - 1-800-247-7863
DONALD L. HAZLETT
Broker/Auctioneer
"When you list with Farm & Ranch, it's as good as SOLD!"

YOST

530 E. Business US Hwy. 36 St. Francis, KS 67756
800-524-9678 785-332-2188 yostford.com

Sales Manager — Brent Rueb Like us on Facebook
Salesman — Jason Knox Yost Ford

INTRODUCING THE NEW 2013 F-150

INTRODUCING THE NEW 2013 SUPER DUTY

Use this Private Cash offer on the purchase of a new F-150 or Super Duty. Better Yet, you can use it over and above any current public offer. To take advantage of these savings, just take this offer into your local Ford Dealership.



Stop in and see how easy it is to get into a New F Series Truck

Now's the time to trade before year end.

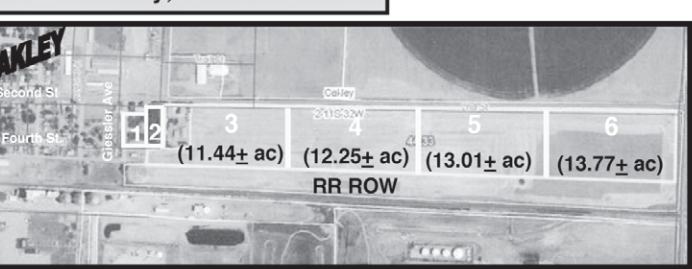
\$750 to \$2,500 PRIVATE CASH OFFER
\$750 to \$2,500 PRIVATE CASH OFFER

160 ACRES GOVE CO CROPLAND PLUS 45+/- ACRES LOGAN CO CROPLAND, BUILDING SITE & MODERN HOUSE IN OAKLEY, KS

ABSOLUTE LAND AUCTION

Tues, Jan. 22, 2013 @10:30 AM, CST

AUCTION LOCATION: Buffalo Bill Cultural Center, Oakley, Kansas
Seller: Estate of Charlie J. Hullet



Land will be offered in 7 tracts and combinations of tracts.

- Legal Descriptions:**
- TRACT 1:** Home at 122 Giessler Avenue, Oakley, Kansas
 - TRACT 2:** Building site, Lots 1-16, Block 1, Kaler addition, Oakley, Kansas
 - TRACT 3:** 11.44± ac cropland, buildings, and irrigation well (permit # 7272)
 - TRACT 4:** 12.25± ac cropland
 - TRACT 5:** 13.01± ac cropland
 - TRACT 6:** 13.77± ac cropland (Tracts 3-6 are N of RR ROW in N/2 of 2-11-32)
 - TRACT 7:** NE/4 of 6-13-31, Gove County, Kansas - All in wheat with landlord's 1/3rd share going to Buyer. Mineral rights are 50% intact and will transfer to the Buyer.

OPEN HOUSE DATE:
MONDAY, JANUARY 21
2:00 to 4:00 PM

INTERNET BIDDING AVAILABLE!
Register by January 14, 2013.
CALL FOR DETAILS!

For a Virtual Tour visit www.farmandranchrealty.com

FARM & RANCH REALTY, INC.
1420 W. 4TH • COLBY, KS 67701
Call Toll Free - 1-800-247-7863
DONALD L. HAZLETT, Broker/Auctioneer
"When you list with Farm & Ranch, it's as good as SOLD!"

HomeLand REALTY AUCTION

(785) 462-8255
www.HomeLandRE.com

- Pat Sloan (785) 443-3261
- Marilyn Meyer (785) 462-2703
- Toni Lindberg (785) 443-4032
- Rock L. Bedore (785) 443-1653
- Tom Harrison (785) 443-0136
- Jerry Wycoff (785) 672-0429

Rory Bedore - Owner
1055 S. Range - PO Box 508 Colby, KS



Owner: Rory Bedore & Agents



Happy New Year

AG LAND
320 Acres Thomas County Cropland & CRP SW of Levant **SOLD**
720 Acres Gove County Cropland & Grass SW of Quinter **SOLD**
160 Ac. Sherman County CRP/Cropland N. of Kanorado **SOLD**
160 Acres Cheyenne County Dryland S. of Bird City **SOLD**
160 Acres Thomas County Land NW of Levant **SOLD**
480 Acres Rawlins County Cropland NW of Levant **SOLD**
160 Acres Thomas County Cropland N. of Levant **SOLD**
480 Ac. Sheridan County Grass/Cropland w/Improvements **SOLD**
80 Acres Thomas County Cropland S. of Brewster **SOLD**

COMMERCIAL
Parcel of Land with Building in Thomas County **SOLD**
Tract of Land 6.7 Acres Thomas County Commercial Land **SOLD**
280 East 4th Street in Colby **SOLD**
744 Main Street in Hoxie **SOLD**
160 East 4th Street in Colby **SOLD**

Let Our Agents Work for You!

CITIZENS MEDICAL CENTER SPECIALTY CLINIC

100 E. College Drive, Colby, KS 67701-3799
(785) 462-7511; Fax (785) 460-4876
TO SCHEDULE AN APPOINTMENT PLEASE CALL (785) 460-1223



January 2013

Sun	Mon	Tue	Wed	Thu	Fri	Sat
		1	2 Cossette Sharma Frankum	3 Nagamani Larsen Werth	4 Frankum	5
6	7 Johnson Huston Rubinowitz Korman Clifford	8 Fields	9 Pham Tirre Kennedy	10 Larsen Reeves Keats	11 Frankum Keats	12
13	14 Huston	15 Birney Bazaz Fisher	16 Bassett Frankum	17 Curry	18 Frankum Challens	19
20	21 Foot Clinic Clifford	22 Holmes Fields	23 Volz Kennedy Korman Frankum	24	25	26
27	28 Huston	29 Parks	30	31		

FAMILY PRACTICE
FAMILY CENTER FOR HEALTH CARE
Steven Bear, M.D.
John Dygert, D.O.
Brewster Kellogg, D.O.
Darren Matchell, D.O.

- CONSULTANTS**
- ALLERGY/IMMUNOLOGY**
Board Certified
Michael Volz, M.D.
 - CARDIOLOGY**
Christine Fisher, M.D.
 - COUNSELING SERVICES**
Meier Clinic - Angie Witman
 - DERMATOLOGY**
Karen Johnson, M.D.
 - DIABETES**
Phillip Challans, M.D.
 - GASTROENTEROLOGY**
Jeffrey Huston, M.D.
 - GYNECOLOGY**
David Forschner, M.D.
 - HEMATOLOGY/ONCOLOGY**
January Fields, M.D.
Martin Rubinowitz, M.D.
 - NEUROLOGY**
Khoi Pham, M.D.
 - OPHTHALMOLOGY**
William Clifford, M.D.
William Keats, M.D.
 - ORTHOPEDICS**
Robert Bassett, M.D.
- ORTHOPEDICS**
- Rajesh Bazaz, M.D.
 - Timothy Birney, M.D.
 - James Holmes, M.D.
 - Admodios Hatzidakis, M.D.
 - Kevin Nagamani, M.D.
 - Ted Parks, M.D.
 - Vivek Sharma, M.D.
 - OTOLARYNGOLOGY**
(Ear, Nose, Throat)
Jerrold Cossette, M.D.
 - PLASTIC SURGERY**
Conrad Tirre, M.D.
 - PODIATRY**
Steven Larsen, D.P.M.
 - James Reeves, D.P.M.
 - PULMONARY** (Chest)
Timothy Kennedy, M.D.
 - RHEUMATOLOGY**
David S. Korman, M.D.
 - GENERAL SURGERY**
Charles Frankum, M.D.
 - UROLOGY**
Wallace M. Curry, M.D.
Darrell Werth, M.D.
 - VASCULAR SURGEON**
Stephen Annett, M.D.