

Let the **Gorilla** help sell your stuff



If you're planning a garage sale, be sure it's in **The Country Advocate**

Invite the 900-pound Gorilla to help with your garage sale. You'll have more customers, sell more stuff and make more money. That means more in your pockets at the end of the day, and less junk to haul off to the dump.

How does it work? Simple. While the paper reaches most families in the town, The Country Advocate goes all over northwest Kansas. It reaches 41,860 readers in 11 Kansas counties, plus parts of northeastern Colorado and southwest Nebraska.

That's why it's the 900-pound Gorilla of Northwest Kansas Advertising, reaching more homes and more people than any other publication, broadcast station, cable system, Internet page or advertising medium.

Reader after reader has tried The Advocate for their advertising. The results?

Stuff sells. People drive for miles to find a good sale. They don't want to walk away empty-handed. The Gorilla works.

Your newspaper makes it easy for you to be in The Advocate. Just call or stop by and place your ad. You'll be surprised how easy it is, and how affordable. You'll be surprised — and happy — when your phone starts to ring or people show up at your door.

But call today. Deadline for The Advocate is noon Friday, ONE WEEK BEFORE a weekend sale. Sure, you can get an ad in the paper later, but it won't be the same. Call the Gorilla.



**COLBY
FREE PRESS**

155 W. Fifth Colby, Kan. 67701
(785) 462-3963

**THE NORTON
TELEGRAM**

215 S. Kansas, Norton, Kan. 67654
(785) 877-3361



THE OBERLIN HERALD

170 S. Penn Ave., Oberlin, Kan. 67749
(785) 475-2206

**The
Goodland Star-News**

1205 Main, Goodland, Kan. 67735
(785) 899-2338

Bird City Times

Box 220, Bird City, Kan. 67731
(785) 734-2659

The Saint Francis Herald

Box 1050, St. Francis, Kan. 67756
(785) 332-3162

TO GIVE AWAY

6 kittens to give away to good homes, preferably indoors. 6 weeks old on 4/13/2014. Will deliver. Call (785) 943-5480.
G 4/16-4/23

Avenue, Norton. Friday, April 18, 8 a.m.-7 p.m. and Saturday, April 19, 8 a.m.-1 p.m. Shop items, antique clocks, household items, miscellaneous. Come see!
N 4/16

10% Off on Bag & Belt - Closing shop after 30 years (Northwest Vacuum, Erwin Thiele) Anyone interested to repair vacuums will help start little or no money 785-462-5572.
C 4/16-4/30

NOTICES

Stag and Stagette supper. Thursday, April 17, Goodland VFW Post #1133. Serving from 5:30-7:30 p.m. MT. Serving mountain oysters, beef and noodles, mashed potatoes and gravy, vegetable, rolls, dessert and coffee and tea. This will be the last Stag and Stagette until next fall. We would like to thank everyone for their support and we will see you next fall! Everyone's welcome!
G 4/16-4/16

Call 308-350-4319.
N 4/16

and fences. Call Randy, 715-305-7750.
N 4/16

Three Wisconsin Turkey Hunters looking for ground to hunt turkeys in late April. Are respectful to property

HELP WANTED

The Thomas County Sheriff's Office is currently seeking applications for a **Detention Deputy**. Applicants must be at least 21 years of age and meet required standards in the following categories: background investigation; written, oral and psychological testing, keyboard skills; health screening.

The Sheriff's Office is an equal opportunity employer and provides employees single health Insurance, sick leave, vacation, KPERs, retirement benefits, overtime provisions, and uniforms (cleaning supplied). Salary depends on qualification and experience.

Persons wishing to apply may pick up an application at the Thomas County Sheriff's Office, 225 N. Court, Colby, Kansas 67701. (Phone: 785-460-4570). Position to remain open until filled. Interviews will begin immediately.



is currently looking for dependable individuals to fill openings in its confection sunflower processing plant.

Receiving Department: Must have CDL or the ability to acquire.

Warehouse Department: Experience preferred, but will train the right person.

PAY STARTING AT \$11.00 / Hour
Please apply in person at:
1320 E. College Dr. in Colby, KS

AUCTIONS/SALES

Large Firearms and Ammo Auction. See davedavisauctions.com Saturday, April 26, 2014, 11 a.m. at the Armory in Broken Bow, Nebraska. Call Kim 308-872-6413 or Jim 308-870-1785 to place a bid.
N 4/23



Full Time & Part Time Cooks, Meat Cutter & Prep Cooks
APPLY IN PERSON
1855 S. Range Ave. Colby, KS

GARAGE SALES

Moving Sale - 911 Kennedy

Hiring Truck Drivers

Hiring Class A&B CDL Drivers, Cement Mixer, Belly Dumps, Side Dumps, End Dumps, and Hopper Trailers. Good driving record and drug testing required. Great pay with benefits, including health insurance, 401k retirement, holidays & vacation.



Oakley, KS 785-672-4319
www.sporerland.com
Equal Opportunity Employer

CNA, CMA, LPN & RN'S NEEDED



Good Samaritan Society in Goodland, KS, is now accepting applications for all positions. There include: CNA, CMA, LPN and RN. Applicant must be honest and reliable. Structured attendance policy is enforced. For more information please contact Shaunda Mann DNS at (785) 890-7517, or apply online at: good-sam.com

Heavy Equipment Mechanic

Heavy Equipment Mechanic needed to maintain a fleet of late model heavy equipment and trucks for a highway construction company. Experience and mechanical knowledge of the following required:

- Diesel and gas engines
- Repair of chassis, driveline, hydraulic, brake, electrical, ac and suspension systems.
- Caterpillar & Kenworth experience a plus.
- CDL with drug screen required.
- Must be able to work with a high degree of independence and organizational skills.

Generous salary & benefit package including health/life insurance, 401(k) retirement, vacation, travel expenses and holidays paid.



Oakley, KS 785-672-4319
www.sporerland.com
Equal Opportunity Employer



Loan Officer

Farm Credit is accepting applications for a full time position for a loan officer. Position requires a four year college degree in Agriculture, Business, Accounting, Economics, or related field. Prefer a minimum of 3-years agriculture lending, financial statement analysis, accounting or equivalent combination of education and experience. The successful applicant will have an understanding of agriculture production in North-west Kansas and will display strong communication and computer skills. Salary to be determined based upon qualifications, with benefit package provided. To apply submit letter of application and resume to Farm Credit of Western Kansas, PO Box 667, Colby, KS 67701 attention Mark Winger or email to mark.winger@fcwk.com. Applications accepted until position is filled.

NOW HIRING!

1 FT Cook, 1 PT Cook, 1 PT Housekeeper
Flexible hours. Full and part-time positions available. Great benefits including insurance, vacation pay & 401K. Top pay. Certification bonus. Monthly bonus program. Employee discount at Penny's Diner. Excellent promotional opportunities. Dynamic training program. **APPLY TODAY!** 801 N. Highway 27. Front Desk Clerks/Van Drivers must have good driving record and be able to pass a drug test. (Junction of Hwy K-27 @ US-40) Sharon Springs, KS Phone: (785) 852-4664. (785) 852-4665-fax. sharonspings@mail.oaktreeinn.com



FOLEY INDUSTRIES

NOW HIRING: Experienced Field Service Technician (\$2000.00 HIRING BONUS) and Shop Technician

Enjoy working outside? Searching for great salary and great benefits? Stop Looking!

- Opening in the Colby area.
- Full maintenance and support of heavy equipment and EPG/Petroleum engines.
- Min. 3-5 years field technician exp. req.
- Continuous development through on-going training.

APPLY TODAY! www.foleyeq.com EOE

Convenience Store Associate Thomas County

Part-time and Full-time Positions Available
New Management • Flexible Hours • Friendly Staff

\$8-Up, \$9-Up, \$10-Up plus Bonuses
Dependent upon Experience

Responsibilities Include:
Processing Payments • Merchandising • Customer Service • Maintaining Building/Equipment/Sales Floor

Position requires:
Standing/Walking/Reaching • Occasional Lifting
Basic Arithmetic Skills • Customer Interaction

Call (710)-691-4415 for details

Wellhead Systems, Inc. manufactures quality oil wellhead products and supplies satisfying the needs of the oil industry, both locally as well as globally. We strive to exceed our customers expectations, the first time, every time, whether it be through timely delivery, providing the best value for the money, efficient and courteous service, or superior quality, reliability and durability of our products.

Having this passion and drive results in a constant growth trend for our company. Therefore, Wellhead Systems is growing and expanding. We are currently looking to add employees to our team. We need **Machine Operators, Warehouse Associates, Office Associates, and a Safety Manager.**

If you are ready to join a highly-trained and motivated workforce, please submit your resume for an interview with our company.

hr@wellheadsystems.com
710 W. McVey St. • Hill City, KS 67642 • 785-421-2255

Help Wanted

As United Plains Ag continues to grow, we have a full time position available in Sharon Springs, KS.

Elevator Operator

Apply at United Plains Ag with

Jeff Kahle or Patrick Gibbs at

785-852-4241 or

Jeff.kahle@chsinc.com or

Patrick.gibbs@chsinc.com

EOE

Help Wanted

As United Plains Ag continues to grow, we have 2 full time positions available at Sharon Springs, KS.

Truck Drivers

Must have a class A CDL license with Hazmat Endorsement.

Apply at United Plains Ag or Contact

Jeff Kahle or Patrick Gibbs

at 785-852-4241 or e-mail to

jeff.kahle@chsinc.com

patrick.gibbs@chsinc.com

EOE

Hiring Concrete Paving Foreman

Sporer Land Development in business since 1961 has a new opportunity for a Concrete Paving Supervisor. Applicant must be proficient at reading plans, setting forms to proper line & grade. Must have good management & communication skills. Excellent salary with benefits, including company vehicle, health insurance, 401(k) retirement, holiday & vacation pay.



Oakley, KS 785-672-4319
www.sporerland.com
Equal Opportunity Employer

HELP WANTED Grain Operations

Our local growing business is looking for detail oriented person for a full time grain operations employee in Colby, KS. A CDL is preferred but not a requirement. Competitive Wages and Excellent Benefits Package Successful completion of a pre-employment physical, drug screening, and background check are required for full time employment.

Please call (785) 462-3354 OR
Send letter of interest to:
Cornerstone Ag LLC, PO Box 468, Colby, KS 67701

The Northwest Kansas Educational Service Center

is taking applications for Board Clerk/Business Office Payroll Clerk:

Essential Qualifications Required:

- High School Diploma
- Must be able and willing to operate or learn to operate a MAPP Accounting System
- Detail oriented
- Ability to develop personal relationships
- Exhibits a high level of professionalism
- Ability to work independently
- Strong communication skills
- Position requires punctual and dependable attendance

Special Notes:

Subject to background check
Prefer experience in school/governmental accounting
Job description available upon request
Preference is to have the job filed by May 1, 2014

Monetary Package:

Salary - Dependent upon qualifications and experience
Single Health Insurance with \$20,000 Life Insurance
KPERs covered position

For position details contact: Dan Thornton, Executive Director at 785-672-3125 extension 110. Applications are available at www.nkesc.org or 785-672-3125. Applications will be accepted until the position is filled. *NKESC is an EOE*

Join Our Team
Selling advertising for Nor'West Newspapers!

FULL TIME ADVERTISING EXECUTIVE

Work week is 40 hours. Computer skills are helpful but not required. Must have good communication skills, excellent customer service skills with attention to detail, and enjoy a fast-paced atmosphere.



BASE PAY PLUS COMMISSION!

SEND A LETTER AND RESUME TO:
Kevin Bottrell, Editor, 1205 Main, Goodland, KS 67735
Email: kbottrell@nwkansas.com
or apply in person. No calls please.

The **Goodland Star-News**
1205 Main, Goodland, KS 67735

Spring Cleaning - Carpet Cleaning - 3 Room Special, only \$174.95! Dry-Foam safe & Green Seal approved. Serving NWKS mileage free since 1987. Call today: A+ Cleaners (785) 538-2526 or (785) 443-5400, Johnene Cheney.

N 3/31

KEARNEY GUN and Coin Show - Saturday, April 26, 2014, 9 a.m. to 5 p.m.; and Sunday, April 27, 2014, 9 a.m.-4 p.m. Expo Center, Fairgrounds, Kearney, Nebraska.

N 23

CHEYLIN RECREATION

SOCCER CLINIC will be held Saturday's April 5, 12, 26 and May 3 from 9-10 a.m. at Bird City Park. Ruben Razo will be the instructor and the fee is \$10. Call Tina, 734-7141 to sign-up. 14-16.
SFH 4/3-4/17

Help for Abused women and children. Open 24 hours a day, seven days a week. Call Northwest Kansas Shelter, 800-794-4624.
SFH tfn

HELP WANTED

Holiday Inn Express is accepting applications for

a full time housekeeper and a part-time breakfast attendant. Apply in person at 645 W. Willow, Colby, KS. C 4/16-4/23

Delivery Driver, M-F, 6 paid holidays, benefit package available, must be Class A driver. Contact Rick at 308-627-6815 Or apply online at cashwa.com/careers C 4/16-4/23

Farm Bureau Financial Services is seeking a Field Claim Representative to investigate, evaluate and negotiate casualty claims in the Northwest KS territory. The ideal candidate will reside

in/near Colby, KS. Candidate must have a college degree or equivalent experience; experience in auto body and mechanical repair preferred. For further information and to apply online, please visit www.fbicareers.com C 4/16-4/23

Part-time Office Assistant - mornings, 20 hrs/wk. Must be able to work with Microsoft Word/Excel and be able to learn our company software system. Please pick up application at 1040 Plains Ave. in Colby or call Amy 785-462-6781.
C 4/16-4/23

Part-Time CNA or CMA needed for Night Shift. Flexible hours, shift differential for night shift. Apply in person at Fairview Estates Retirement

Community, 1630 Sewell Ave., Colby, KS 785-462-2154. EOE

C 4/16-4/23

320 ACRES PRIME CROPLAND THOMAS COUNTY, KANSAS

Located 9 miles North, 1 mile East, 1 mile North and 1/2 mile East of Brewster, KS.

\$2,775/Acre



For more information, contact
Rock L. Bedore
785-443-1653

(785) 462-8255
www.HomeLandRE.com

The Country Advocate Service Directory

CB HEATING A/C & PLUMBING
1730 West 4th Street • Colby, Kansas 67701
Chad Briney - Owner
Office: 785-462-2445 • Cell Phone: 785-462-5633
Fax: 785-462-6341 • Website: www.cbheatac.com
Email: Chad@cbheatac.com
Licensed ~ Bonded ~ Insured Tappan • Rheem • Trane

APRIL SPECIAL 4/20 DRAWING
\$25 minimum purchase
\$20 Member minimum purchase
Drawing to be held on 4/20 at 4:20 p.m.
Also the day of 4/20, there will be a random game to be played for special gifts and prizes.
Be on the lookout for the new daily specials posted in the store.
G&G Freds' Tobacco, Pipes & Accessories
All pipes & accessories intended for tobacco use.
415 14th, Burlington, CO • Phone: (719) 212-7048 or (719) 342-0503 (after hrs)
Mon-Thurs 12 PM-9 PM • Fri & Sat 12 PM-10 PM • Closed Sunday

Nancy LePell Bookkeeping
165 East 3rd - Colby, KS 67701
785-462-7428
Income Tax Preparation - Individual, Business and Estates
Accounting and Bookkeeping
Business and Financial consultation
Christy Griffith, RTRP Nancy LePell, EA, ChFC, CB
Working to bring you the best possible solutions

WANTED: DIRTY CARPET
IF YOU HAVE DIRTY CARPET, WE CAN STEAM CLEAN IT.
NO JOB TOO BIG OR TOO SMALL!
• Commercial/Residential
• Advanced Truck Mounted Steam Cleaning Equipment
• Water Damage Restoration
• FREE ESTIMATES
PRO FLOOR CARE
Carpet & Upholstery Cleaning
(785) 462-8313 or (800) 473-4138
Cleaning NW Kansas one house at a time!
Guaranteed Ultra Cleaning Power

AMERICAN BUILDINGS
A NUCOR COMPANY
ERIC RICHARDSON CONSTRUCTION INC.
48515 SNEAD DRIVE, BURLINGTON CO 80807
SERVING EASTERN COLORADO AND WESTERN KANSAS
OWNER SALES
ERIC RICHARDSON MIKE RUHS
CALL FOR PRICING
719-346-8230

Your ad could be here!
Call your local newspaper today to find out how!

NKBA
The Kitchen & Bath Professionals
• Kitchen Cabinets • Counter Tops
• Closets • Furniture • Commercial
• Entertainment Centers
• Custom Jewelry Closets
Mingo Custom Woods
1965 W. 4th St., Colby, KS • 800.320.2201
www.mingocustomwoods.com • 785.462.2200

BURLINGTON FAMILY DENTISTRY
Justin Evanson DDS, MD Oral Surgeon
Jason Ehtessabian DDS, FAGD, PC Fellow of the Academy of General Dentistry
Dr. Justin Evanson Dr. E
IV Sedation, Wisdom teeth removal, Implant placement, and Exceptional Comprehensive Dental Care for the Entire Family!
(719) 346-8266 340 14th St. Burlington, CO
www.burlingtonfamilydentistry.net

Questions about health care reform?
We have the answers.
You have new health insurance options, but which one is right for you? We can help you understand your options and select the right plan for you and your family.
I'm ready to help. Give me a call today!
Vernon Hurd
Farm Bureau Agent
550 N. Franklin Ave.
Colby, KS 67701
785-269-9511
www.VernonHurd.com
KANSAS FARM BUREAU The Voice of Agriculture
CoventryOne
Products available at Farm Bureau Financial Services
CHKS1765 Health Insurance plans underwritten by Coventry Health and Life Insurance Company. H240B-ML-1 (8-13)

One combined policy + One deductible for it all
One big sigh of relief
When things go wrong, you need your insurance to go right. Contact me to see how our one deductible advantage can help provide you peace of mind when you need it most.
David Browne III
550 N Franklin Ave
Colby, KS 67701
785-462-3388
FARM BUREAU FINANCIAL SERVICES
Insurance • Investments
Auto • Home • Life • Business • College • Retirement

Newbanks Pumps, Inc.
We sell the best and service the rest!
Water Well Drilling & Service
~ Irrigation wells ~ Domestic wells
~ Stock wells ~ Solar Systems
Curt Goble, Owner
Ph: (785) 899-6302 ~ Email: newbankspumps@gmail.com
CO #841 • KS #856 • Elec. Cont. #6127

The Decorating Co.
Interior Design Consultants
Irene Smith & Rochelle Kling
There's no limit to our imagination.
106 E. 11th, Goodland, KS 67735
(785) 890-5441
E-mail: decorco@st-tel.net

NOW available at Oasis Travel Center in COLBY...
Gunnysack Greeting Cards
"Cards that have the guts to tell it like it is"
Sarcastic & Silly
Very Blunt & Unusual
Not for the easily Offended
Created by Ellis, KS resident
Tracy Augustine
Stop by to check out the wonderful selection or go online at
www.gunnysackgreetings.com

HSI
HOXIE STATE INSURANCE, INC.
824 Main, PO Box 378
Hoxie, KS 67740
115 S. State St.
Winona, KS 67764
(785) 675.3263 - Fax (785) 675.3721

C.W. Beamgard Co. Inc.
SALES & SERVICES SINCE 1919
Jeep
• New Vehicle Sales • Service
• Used Vehicle Sales • Windshield Pit Repair
• Parts • Tires
• Accessories • Towing Service
Monday - Friday 8-6, Saturday 8-Noon
785.626.3286
Fax 785.626.3717
210 State St. • Atwood, KS 67730

Superior
Flooring and Furniture and Accessories
360 14th St., Burlington, CO ~ PHONE: (719) 346-7579
Dan and Myrna Troyer

Meadow Lake Restaurant & Lounge
• Open to the Public •
Monday Nights \$1 Draws
Saturday Nights Prime Rib
Our kitchen is open Mon - Sat, 5 - 9 p.m.
MEADOW LAKE
GOLF COURSE & RESTAURANT
785-460-6443
1085 E Golf Club Rd. • Colby, KS

ROOFMASTERS
Your Local Roofing Contractor
425 East Hill, Colby, KS
Licensed - Bonded - Insured
RESIDENTIAL 1-800-536-6642
Tamko Shingles 1-785-462-6642
GAF Shingles
Wood Shingles
Metal Roofs
COMMERCIAL
Rubber Single Ply
White TPO Single Ply
Built Up Systems
Modified Systems
FREE ESTIMATES
Elastomeric Rubber Coating For Metal Roofs

Immediate full-time Manager position available at S&W Supply in Colby Ks. Candidate will need automotive/mechanical experience and customer service skills. Agricultural experience a plus. Must have valid DL. Some overtime, some lifting. Good work ethic required with desirable personality. Basic computer/web skills needed. Benefits include salary pay, 401k, comprehensive insurance, paid vacations, sick leave and more. Pickup application at 185 West 5th, Colby Ks. or call (800) 777-1457. You may e-mail your resume as well to

sales@swsupply.net
C 4/16-TFN

Drivers needed for local deliveries. Rosen's Inc. is paying competitive wages for Class A or B CDL drivers. Must have or be capable of obtaining tanker and Hazmat endorsements. Must pass drug screen and DOT physical plus have clean MVR. Apply in person at Rosen's Inc., 60 Stephens Drive, Colby or call 785-460-1330.

C 4/16-4/30

Experienced Electrician Needed. Contact Jim's Electric, Inc, 210 E 2nd,

Colby, KS, 785-460-2844.
C 4/16-4/23

Part-time Cleaning Personnel Needed. Contact Buffalo Holdings LLC, 210 E 2nd, Colby, KS, 785-460-2844.

C 4/16-4/23

Northwest Kansas Juvenile Services (N.W.K.J.S.) is now accepting applications for the position of Parenting Wisely (P.W.) Coordinator. The position will be based in one of the counties covered by N.W.K.J.S. (Ellis, Rooks, Trego, Gove, Norton, Decatur, Graham, Phillips, Smith, Osborne,

Sheridan, Cheyenne, Logan, Sherman, Rawlins, Wallace, Thomas). This position requires travel throughout the 17 counties covered by N.W.K.J.S. Agency vehicle is provided. Overnight travel is seldom required. The P.W. Coordinator will be presenting the SAMSHA Evidence Based P.W. Program to the parents of the youth being supervised by N.W.K.J.S. A majority of the P.W. program is computer based requiring the P.W. Coordinator to monitor via internet. Applicants must have excellent organizational and time management skills. A Bachelors Degree in

criminal justice/socialwork/ education or related field is required; bilingual a plus. Salary is \$31,000.00 plus benefit package. Send resume to Peggy Pratt, PO Box 89, Oberlin, Ks 67749. All resumes are due by May 1, 2014. EOE.

O 4/16-4/23

Wallace County Community Care Center in Sharon Springs, KS, has job openings for: RN/LPN both day and night shift, MDS Coordinator & Activities/Social Services Director. For more details please call (785)

852-4244, Jeny Stevens extension 12, or Sharon Rohr extension 11.

G 4/16-4/23

Accepting applications for Quality Control Assistant. Duties include grading and sampling. Training will be provided. Basic clerical and computer skills a plus. Apply in person at Sun Opta 1701 Industrial Loop in Goodland, Apply on-line at sunrisestaffingservices.com or call for interview at (620) 792-1004.

G 4/16-4/23

The Country Advocate Service Directory

SHOW YOUR MONEY WHO'S BOSS.



Shirley D Skolout
Mountain Plains Agency
1690 W. 4th St.
Colby KS 67701
Phone: (785)460-6284
skolos1@nationwide.com

Don't let your money just sit around.
Take charge. Take action.
Talk to your Nationwide® agent about our range of financial solutions.

Langer Industrial Service

2022 County Road 11 • Levant, KS 67743 • 785-586-2208
Monday - Friday 8 a.m. - 5 p.m.

We pay cash up to for all scrap metal*

- Brass • Copper • Aluminum • Batteries • Electric motors • Cars
- Combines • Farm Equipment • Prepared/Unprepared Iron and Tin
- Container Service • Off site baling and car crushing
- Limited pickup service available

Schedule deliveries after normal business hours by appointment when necessary
* Some Conditions Apply

LASERS BY TALIA
LOOK BETTER, FEEL BETTER

- Laser Hair Removal
- Ultrasonic Slimming
- Teeth Whitening



MON. & WED. NOON - 6 P.M.
TUES., THURS. & FRI.
8 A.M. - 5 P.M.

APPOINTMENTS ALSO AVAILABLE AFTER HOURS

1580 ROSE AVE. • BURLINGTON, CO
719-346-4640

ODDS & ENDS SALE


Come look at all that's on sale!

20% OFF...

Paneling, 3/4 Oak Plywood, and Storm Doors
(In stock items only.)

PJ'S HOME CENTER
1630 Sandy Road (1/2 miles north of I-70 Exit 19, west side of road)
Goodland, KS • PHONE: (785) 899-6241

Looking for a better return?



If you have CDs about to mature or other assets to invest, consider all of your options. Not only do our fixed annuities offer you a competitive return, they also offer you flexibility, security and guarantees.

To see how simple it can be to save for your future, contact me today.

David Browne III
555 N Franklin
Colby, KS
785-462-3388

FARM BUREAU FINANCIAL SERVICES

Auto | Home | Life | Business | College | Retirement

The guarantees expressed here are based on the claims-paying ability of Farm Bureau Life Insurance Company. Note: Bank CDs are FDIC insured, the other products referenced here are not federally insured. Securities & services offered through FBR Marketing Services, LLC, 5400 University Ave., West Des Moines, IA 50266, 877-800-2904, Member SIPC, Farm Bureau Property & Casualty Insurance Company, Western Agricultural Insurance Company, Farm Bureau Life Insurance Company, West Des Moines, IA, Affiliates Company providers of Farm Bureau Financial Services A132-ML-1 (4-13)

Celebrating 40 years in business!

Hot Brush
Michael S. Boysson

BANNERS - LETTERING - PINSTRIPES - ART


Award winning Quality signs since 1974
204 W. 4th Bird City, Kansas
785-734-2423

PLUM CREEK LTD
Downtown Colby • 785-460-1978

Men's Suits & Casual Wear
Missy & Women's Dress & Casual Clothing
Tuxedos by Jim's Formal Wear - Bridal Registry

Let us make your wedding & prom tux picture perfect!

SPEEDLINER
Moonlight Liners
Spray-In Bedliners



Scott Gilmer
819 W. 8th • Goodland, KS 67735
(785) 890-5384
Evenings & Weekends

NERIUM
Independent Brand Partner

Bringing you a REAL product that produces REAL results

Dramatically reduces
Fine lines & wrinkles • Discoloration • Enlarged pores
Uneven skin texture • Aging or loose skin

Call today to set up your free personal consultation
785-443-1458
www.mitch2014.theneriumlook.com



Mary Mitchell
Independent Brand Partner

MURRAY ROOFING & CONSTRUCTION

RESIDENTIAL • COMMERCIAL • INDUSTRIAL

Residential:
• Roofing
• Construction
• Remodels
• Blown in Insulation



Commercial:
• TPO, EPDM, Duro-Last, Modified, Fibered and Non-Fibered roof coatings.

Fully Insured, Bonded, Licensed and Covered by workman's Comp.

Office: 785-462-6908
Office Manager: 785-443-5708
Owner: 785-443-1339

Elite Dura-last Contractor

CHECK OUT OUR WEBSITE FOR MORE INFORMATION:
www.MurrayEnterprises.org

Paw Wash Pet Crematory
6445 Rd. 21, Goodland
Kathy Schermerhorn

Please leave message
CELL PHONE: (785) 899-4398
Private or Group Rate

Mobile Home Lots for Rent

\$175 Month
(includes water, sewer & storage shed)
FREE Month with approved application

Friendly Acres Mobile Home Park
1150 S. Franklin, Colby
Call 785-462-6445

Windy Plains Bike Shop

Professional bicycle repairs since 1978!
Parts, accessories and service for all makes.
Pick up and delivery available in Goodland!

TIRED OF FLATS? ASK ABOUT OUR NO FLAT GUARANTEE!

Harold Snethen
6085 Rd. 17
(785) 899-4786 • (785) 899-5858 (home)
Same day service on most out of town repairs!

KANSAS Insurance INC
Formerly THOMAS County INSURANCE AGENCY



Dennis Tubbs
dtubbs@kansasins.com

490 N. Franklin 785-462-3939

- Home & Auto
- Farm & Crop
- Business Insurance
- Boat, Motorcycle, RV

Nationwide Agribusiness
On Your Side®

www.kansasins.com

Goodland Home Health, LLC
Sue McCracken, RN
655-B E. 22nd, Goodland, KS
Office: (785) 890-7658 • Cell: (785) 821-0050

We provide the best care for those individuals due to illness who are unable to care for themselves or their loved ones.

FARM & INDUSTRIAL PAINTING
Grain Bins, Barns, Morton Sheds, Barn Repairs, Metal Roofs

ALL COLORS! TRI-STATE PAINTING


Pat Castella
1-800-940-8289
leave message

FREE ESTIMATES!

Dr. Tom Barlow DENTIST
785-460-7538

Appointments Readily Available

505 H N. Franklin, Colby



Culligan
better water. pure and simple.®

- Drinking Systems • Water Softeners (Sales & Rentals)
- Water Coolers • Salt Sales & Delivery

Scheopner's Water Conditioning, Inc.
Goodland & Colby, KS • Toll free: (800) 536-2352

NEW SYSTEM PROFESSIONAL WINDOW CLEANING
(785) 462-6995
(800) 611-6735

www.MyWindowCleaner.net
Serving Colby since 1992!

Commercial • Residential • Free Estimates



Looking for wheat straw or damaged wheat to bale

Kroskob Brothers Farms
Custom Haying and Farming

Will Prepay to secure Acres
Call for Pricing
Brandon: 970-380-4256 or Travis: 970-380-6853

Accepting applications for Bagger/Warehouseman for agriculture business. Experience in grain elevator helpful. For interview call Sunrise Staffing Services, LLC @ (785) 628-6877, apply online at sunrisestaffingservices.com or pick up application at the Sun Opta Plant 1701 Industrial Loop in Goodland. G 4/16-4/23

Sacred Heart School is accepting applications for a part-time reading specialist and full-time classroom teacher for the 2014-2015 school year. For more information please contact the school at 785-460-2813 or visit www.sacredheartcolby.com/school C 4/2-TFN

Rawlins County USD 105 is accepting applications for Full Time Assistant Custodian at the Elementary School. Benefits include full single health insurance, KPERs retirement, life insurance, and sick leave. To obtain an application, please come to the district office at 205 N. 4th Street 785-626-3236 or go to www.usd105.org. Rawlins County USD 105 is an equal opportunity employer. C 4/2-4/16

Decatur County Road and Bridge is taking applications for full-time employment. Employee will be subject to random drug and alcohol testing and will be required to obtain a CDL. Applications available at Engineer's Office. Call (785) 475-8111. Decatur County is an Equal Opportunity Employer. O 3/5tf

Help Wanted: correspondent for Rexford. Send news via e-mail once a week. Paid by inch and receive free subscription to The Oberlin Herald. O 1/30 tfn

HOMESTEAD Nutrition Project is accepting applications for an assistant cook at the Goodland Nutrition Site. Monday-Friday 10 a.m. to 1:30 p.m.. No evenings, weekends or major holidays. Vacation/sick/holiday time offered. Please call 1 (800) 432-7422 for more information. EOE. G 4/16-4/16

Frontier Ag in Atwood has an opening for a truck driver and operations labor. Apply at 12731 Highway 25 or call 785-626-3932 for details. C 4/9-4/23

Employment Opportunity: Colby 24/7 Travel Store is currently accepting applications for part-time or full-time cashiers. Compensation includes \$9.00 starting wage plus incentives including BCBS health and life insurance, 401K, and paid vacation. Apply online at www.24-7-stores.com or apply in person at Colby 24/7 Travel Store, 1980 S. Range. C 4/9-4/30

PSI Transport is always looking for good company livestock and grain haulers as well as shop mechanics. Competitive pay, life/health/dental benefits and bonus program available. EOE. (785) 675-3477. G 6/15-TFN

CHEYLIN SCHOOLS needs a part time custodian, Monday through Thursday, during the school year and summer. Contact Superintendent Angelos, angelos@cheylin.com, 785-734-2341 or 785-734-7117. 15-17. SFH 4/10-4/24

BANKWEST OF KANSAS-

St Francis has a full-time opening for a teller. Desired qualifications include excellent skills in customer service, cash handling and computer knowledge. Interested individuals should pick up an application at the St Francis BANKWEST OF KANSAS office at 121 W Washington. 14-15. SFH 4/3-4/10

CHEYLIN RECREATION needs the following coaches/instructors for the 2014 summer programs: swim coach, baseball commissioner, baseball coaches, summer weight lifting coach and water safety instructor for swim lessons. Call Tina at 734-7141 for

application. Applications will be taken till positions are filled. 14-16. SFH 4/3-4/17

AUTO MECHANIC needed at Yost Ford, in St. Francis. 785-332-2188. 16-18. SFH 4/17-5/1

As our office expansion nears completion, Centre Sky Dentistry, the office of Dr. Craig Krizek, is seeking a dental assistant to join our practice. This is a full time position with benefits. We will train the successful applicant. Please send your resume to PO Box 280,

Norton, KS 67654 or pick up an application at our office location: 109 N. Kansas Avenue, Norton. N 4/23

Summer Help Wanted: North Central Kansas Contractors is seeking high school juniors and seniors, college kids, and those looking for summer employment for a summer project. Will be home every night with competitive salary. Call Brett at 785-854-8401 or Tim at 785-854-8400 for more information. N 4/16



YOST 

800-524-9678 785-332-2188 yostford.com

Sales Manager - Brent Rueb • Rell Zimbelman - Sales Agent



Use your Smart Phone to scan our Bar Code for complete inventory

Like us on Facebook



Yost Ford



2013 F250 Lariat Crew
Just like NEW - Less than 6,000 miles. Sharp Unit, Ready to go to work for you!

When you Purchase at **YOST**, you get the **MOST!**
 Trade in • Value • Service

The New Yost Ford

MULTI-TRACT AUCTION
1,021± Acres Yuma Co. Colo. Real Estate
WED., APRIL 23 ♦ 9:30 AM MT

Grass, Home & Imp., CRP & Minerals
Cobblestone Inn & Suites - Wray, Colo.
Goodman Family, Sellers

TRACTS #1 - #4 CRP & Mineral Rights
Located in 1N-45W, Sec. 3; 7 mi. W. of Wray
 Tract #1 - 159± Ac. CRP; NE¼, less 1 ac.
 Tract #2 - 160± Ac. CRP; SE¼;
 Tract #3 - Mineral Rights for Tract #1; Producing Gas Well
 Tract #4 - Mineral Rights for Tract #2

TRACTS #5 - #9 Grassland/Homesites
Located in 2N-44W, Sec. 33 & 34;
2 mi. West & 2 mi. North of Wray
Seller's Mineral Rights Included
 Tract #5 - 40± Ac. Grass/Homesite; Borders County Rd. 37
 Tract #6 - 40± Ac. Grass/Homesite; Borders County Rd. 37
 Tract #7 - 40± Ac. Grass/Homesite; Borders County Rd. 37
 Stock Well & Bottomless Tank
 Tract #8 - 40± Ac. Grass/Homesite
 Tract #9 - 240± Ac. Grass; Live water in SW corner

TRACTS #10 & #11 Riverbottom, Bluffs, Grassland, Home & Improvements
Located in 1N-44W, Sec. 10, 11 & 15;
1 mi. West of Wray bordering Hwy 34
Seller's Mineral Rights Included
 Tract #10 - 62± Ac. Scenic Riverbottom & Bluffs Grass
 Tract #11 - 240± Ac. Republican Riverbottom, Scenic Grass & Bluffs, Home & Improvements; Includes 1,634 sq. ft. 2-bedroom, 2-bath home, shop, 3+ bay garage; Domestic/Stock Well

Watch our website for details or call for sale bill!

Buyer Information Meetings & Open Houses



Friday, April 4th
 3 - 7 p.m. MT
& Friday April 18th
 3 - 7 p.m. MT
 both on location
28960 HWY 34, Wray

SHAY REALTY, Inc.  Reese W. Shay, Listing Broker
 970-630-5006 - Reese@ShayRealty.com
www.ShayRealty.com

Hail the power of BACON!



Try our new Bacon Clubhouse Burger!

A quarter-pounder with flavorful beef seasoning, or our premium grilled or crispy chicken patty,

applewood smoked bacon, white cheddar cheese, caramelized grilled onions, farm fresh tomato, crisp leaf lettuce and our special sauce on our new artisan roll.




GOODLAND LOCATION ONLY • OPEN DAILY 6 A.M. TO 11 P.M.

460+/- ACRES CROPLAND LAND AUCTION SHERMAN COUNTY, KS

SELLERS: SLB Limited Partnership & Solon L. Bloomer Family Partners LP II

Friday, April 25, 2014 @ 10:30 AM, MDT

AUCTION LOCATION:
 Community Hall at the Firehouse, Goodland, KS



EDSON

LEGAL DESCRIPTION:

Cropland acres in Section 21-9-38

This is a great cropland located near I-70 and Edson in Sherman County, Kansas.

The cropland has been very productive with the landlord's share of the 2014 wheat crop going to the Buyer. Possession of the open land will be at closing.

INTERNET BIDDING AVAILABLE!

For Virtual Tour visit
www.farmandranchrealty.com

FARM & RANCH REALTY, INC.

1420 W. 4TH • COLBY, KS 67701
 TOLL FREE: 1-800-247-7863
DONALD L. HAZLETT
 Broker/Auctioneer

"When you list with Farm & Ranch, it's as good as SOLD!"

Toy • Antique • Household • Coin • AUCTION - Saturday, April 19, 2014 • 10 a.m.
Location - William Carpenter 4-H Building at the Fairgrounds, north edge of Scott City, KS

TOYS
 Road Legends: Ford 1934 pickup - scale 1:18, Ertl Collectibles: 1910 Texaco tanker coin bank, First Gear: 1955 Diamond T Tanker - scale 1:34, Road Legends: Ford 1934 pickup wrecker - scale 1:18, Coastal 1925 Kenworth stake truck w/barrels coin bank - scale 1:34, Gearbox: 1920 special edition Ford Texaco coin bank with pump - scale 1:24, Sunstar: 1968 Mercury Cougar XR7 - scale 1:18, Ertl: 1905 Ford delivery car bank - scale 1:25, 1944 Ford Pepsi pickup, 1940 Ford Mountain Dew truck, Ertl: 1959 Chevy El Camino bank, Red Box: 1937 customized version Ford pickup - collector's edition - scale 1:24, Big A Auto parts: 1929 Ford Model A Wrecker bank, Red Box: 1940 customized Ford pickup collector's edition - scale 1:24, Ertl: 1957 Caterpillar Chevy state truck - scale 1:25, Coca Cola: 1953 delivery truck bank, Ertl: 1931 Hawkeye crate bank - scale 1/34, Sentry Hardware: 1931 Panel Delivery limited edition bank - scale 1:25, Ertl: 1912 open front panel Ford Motor Company bank - scale 1:25, Big A Auto Parts: 1956 Ford pickup, 1931 Ford Model A Roadster & 1925 Ford Model T Runabout, First Gear: 1951 Ford F-6, Full Rack Stake Truck with barrels - scale 1:34, Cabelas Ford F250 pickup - scale 1:34, Signature Models: 1923 Ford Model TT - scale 1:32, Ertl: 1940 True Value Ford pickup bank - scale 1:25, Road Signature: 1964 Ford Falcon - scale 1:18, Road Legends: 1955 Ford Thunderbird - scale 1:18, Motor Max: 1940 Ford pickup - scale 1:24, First Gear: 1953 Ford C-600 with tanker body - scale 1:34, Revell Monogram: Ford Expedition, First Gear: NAPA 1949 International Model KB-8, Spec-cast Ford Model A pickup bank - scale 1:25, Ertl: Ford Model T, Liberty Classics: Lorrie Morgan - Ford Model A bank, First Gear: 1951 Ford F-6 full rack stake truck - scale 1:34, Maisto Special Edition: 1992 Ford Explorer - scale 1:24, First Gear: NAPA 1937 Chevy tow truck, Road Legends: 1953 Ford pickup - scale 1:18, Ertl: 1931 Hawkeye Flatbed and tractor & 1913 Ford T Van bank - honoring 47 years of leadership, Road Legends: 1957 Chevy Corvette - scale 1:18, First Gear: Ford F650 with miller industries slide back carrier, Revell: 1955 Ford Thunderbird scale 1:18, Road Signature Series: 1948 Ford Woody - scale 1:18, Crown Jewel: NAPA 1935 Chevy Tow Truck - scale 1:24, Road Signature Series: 1914 Ford Model T Fire Engine - scale 1:18, Motor City Classic: 1931 Ford Model A - scale 1:18, Crown Jewel: NAPA 1939 Lincoln Zephyr Street Rod - scale 1:24, Century Hardware: 1939 Lincoln Zephyr Coupe - scale 1:24, First Gear: Triple A 1956 Ford F100 pickup - scale 1:25, Ertl: Coast to Coast 1925 Kenworth wrecker, Timeless Classics: 1955 Ford Fairlane Crown Victoria - scale 1:18, Burago: 1996 Dodge Viper GTS Coupe - scale 1:18, Ertl: Kerr-McGee Limited Edition Douglas DC-3 plane, Road Legends: 1953 Ford F100 Wrecker - scale 1:18, First Gear: Ford F650 XLT Super Duty, Sun Star: 1971 Mustang Mach 1 Crown Jewel: Hemmings Motor News 1934 Ford Tow truck - scale 1:24, Mira: 1964 1/2 Ford Mustang - scale 1:18, Anheuser Busch 1932 Stearman bi-plane, City Force: Rescue Team Ambulance, 1956 Ford Thunderbird, Sun Star: 1968 Mercury Cougar XR - scale 1:18, Sun Star: 1963 Ford Falcon Futura convertible - scale 1:18, Ertl: John Deere 1953 Ford Delivery Truck, Ertl: Massey Harris 44 Tractor - scale 1:16, Ertl: Farmall 420 tractor - scale 1:16, Ertl: Super M-TA Farmall - scale 1:16, Spec Cast: Oliver Farm equipment - scale 1:16, Ertl: John Deere 1956 Ford pickup, Sunny Side: 1937 Superior Ford pickup - scale 1:24, Ertl: John Deere Moline vintage tractor/tractor set - scale 1:32, Ertl: John Deere 1927 Graham Panel Van Delivery, Ertl: John Deere 1966 Ford pickup bank, Ertl: John Deere Model E Engine - scale 1:6, Ertl: John Deere 1915 Model R Waterloo boy - collector's edition - scale 1:16, Ertl: Case "Vac" tractor - scale 1:16, Ertl: John Deere 1953 Model D tractor collector's edition, Ertl: 1904 Knox Delivery Wagon, Ertl: Case IH AFX 8010 Combine - scale 1:32, Coca Cola Ford Plateau Truck, American Graffiti: 1974 Ford Mustang Grabber - scale 1:24, 1958 F110 Ford truck ornament, Goulet Evolution: Ford Mustang GT - scale 1:18, Maisto: Premiere collection - Ford Thunderbird show car - scale 1:18, Racing Champions limited edition: 1949 Mercury - scale 1:24, Ertl: Texaco 1919 GMC Tanker Truck, Revell: Frank Bullitt's 1968 Ford Mustang - scale 1:25, Road Signature Series: 1938 Ford Fire Engine - scale 1:24, Ertl: 1968 Ford Mustang Cobra Jet - scale 1:18, Revell: American Graffiti - The Mysterious Blonde's 1956 Ford Thunderbird - scale 1:25, Welly: 1970 Ford Mustang Boss 302 - scale 1:18, Elite: 2007 Shelby GT 500 - scale 1:18, Road Legend: 1955 Ford Thunderbird - scale 1:18, Maisto: Special Edition - 1972 Chevy Chevelle SS 454 - scale 1:18, Case 1680 Axle Flow Combine, Caterpillar fork lift, Komatsu fork lift, Case DC 4 Tractor, Old green tractor, Case 800 Diesel tractor, Gehl 602 backhoe, John Deere 8960 tractor, Oliver Row Crop 70 tractor, John Deere dirt mover, Remote control John Deere tractor, Ford Sun tractor, Case 2255 C90 tractor with scoop, John Deere General purpose tractor, International Tractor with trailer, International 3294 Tractor with sweeps, Maisto: 1992 Ford Explorer - scale 1:24, Maisto: 1992 Ford Explorer - scale 1:24, Eligor: 1932 Ford V8 pickup - quantity (3), Eligor: Ford V8 1932 Roadster Capote, John Deere sweeps, Case of Spec Model cars, Ertl: John Deere 310 SJ Backhoe loader, Liberty: 1940 Ford bank, John Deere A with baler fork, John Deere Waterloo boy Kerosene Tractor, John Deere 12A combine, John Deere 12A combine, 1931 Hawkeye Flatbed/Farmall 350 Tractor, 1940 3rd edition 1:25 scale - Golden Rule Lumber truck bank, Hall of Fame Collection - 1951 Ford tow truck 1:25 scale, Hall of Fame Collect. - 1951 Ford Fuel Tanker - 1:25 scale, Hall of Fame Collection-1951 Ford bottle truck 1:25 scale, Liberty Classic Model A bank, 1967 Ford Shelby GT 500 1:32 scale, Special Edition - Maisto- 1:24 scale - 2006 Ford Fusion, 1937 Ford Convertible 1:18 scale, Hall of Fame: 1951 Ford Stake Truck (US mail truck), 1948 F1 Ford pickup 1:18 scale, 1948 Tucker Deluxe Edition 1:18 scale, 1954 Mercedes Benz 300 SL, Maisto-1997 Ford F150 Flair Side pickup 1:26 scale, Model A pickup bank, Model A delivery van bank, 1948 Ford F1 pickup bank, 1955 Chevy Cameo 3100 V8, Limited Ed. Red & blue Ford Sales & Service, Light blue Ford roadster, 1957 Ford Limited Ed., Ford V8 1:19 scale (black), Red 1939 Chevy Coupe 1:24 scale, 1932 Ford Hi-Boy Roadster bank (True Value), 3 Ford Model A Limited Ed., Big A auto parts bank Ford Model T, Blish-Mize Model T Van bank, Model T van Montgomery Ward bank, 1948 Ford quality care van, 1931 Hawkeye Coors bank, R365 High runner semi with US plane, 2 Hubley Kiddie Toy (Yellow and a green car), Ford V8 1:19 scale -Texaco fuel truck, 1933 Pierce silver Arrow, Tonka fire engine with ladder, Dodge Ram 2500 (plastic), 1955 Ford T-bird(red), Ford Escape, 1999 Mustang GT, 1956 Ford (Jody's Garage), 1948 Ford F1 pickup with trailer, Richmond Ford Motor Co. blue car, Plastic Mach 1 Mustang, 1964 Ford Fair Lane Thunderbolt, 1951 Ford fuel truck, 1905 Ford delivery car bank(Trust Worthy Hardware Store), Plastic truck 1994 Ford Ranger 4 x 4, 1918 Model T Ambulance, 1920 Model T, Yellow 1994 Mustang GT, 1956 Ford pickup truck bank, 1994 Ford Mustang GT (red), Green hydraulic dump truck, Jody's Garage flatbed car hauler, 4 car models put together, Ford F Series 50 years white semi, Mountain state Transport truck, Maroon F150 Ford pickup, 1993 Dodge Intrepid, 1955 Chevy Sidestep, 1959 Chevy Impala.

ANTIQUE & COLLECTIBLES
 Collectors plates, Vintage glassware, Advertising glasses: Coors, Ford, JD, A&W, Barbie's, new in box, Old lunch boxes, 6) Monterey western cups, Antique jars, Hope-a-long Cassidy mug, Oil lamps, Barn lanterns, Old fan, Crocks, jugs & churn, Smoking memorabilia & tins, Cook books, Cigarette lighters, Tobacco tins & cutter, Sad irons, Griswold # cast iron skillet, Oak rocking chair, Baseball bats, Old magazines, Oliver tractor sales clock, Wash tubs, Old barometer, Washboards, Enamel ware, Mantle clock, electric, Small oak entry table, Cast iron gas pump bank (old), Car & motorcycle license tags, Old Coors neon light up sign, Salt and Pepper shaker collection, Other items.

OTHER ITEMS
 Glider rocker, Vintage book shelves & racks, Picnic table, Hand tools, Tap & die set, Delta band sander, Scroll saw, Socket sets, Craftsman router & bits, Small electric hand tools, Small parts assortments, Nut & bolt assortments, Wooden work bench w/vise, Rigid pipe threader, Shovels, rakes, hoes etc., Floor jack, Other tools & shop items.

COINS
 Indian head pennies, Steel pennies, V nickels, Buffalo nickels, 2) 1838 half dimes, 3) Franklin half dollars, Walking liberty half dollars, 1913 Barber half dollar, Barber quarter 1888, 1896, 1921 Morgan silver dollars, 1921 & 1922 Peace silver dollars, Old Foreign coins, Tokens, Rolls of 1964 pennies from Federal Reserve bank, 1883,1890,1891 Carson City Silver Dollars, 1959 to 1964 Philadelphia mint set & other mint sets, Proof sets, First Commemorative Mint Liberty head nickels, 1858 Flying Eagle cent, 1858 Flying Eagle counter stamp cent, 6) Flying Eagle cents, no dates, Silver Certificates, 1935 G (6), 1935 F (5), 1935 E (4), 1957 (7), 1957 A Alpha Series, 1957 B Alpha Series Kennedy half dollars, Many other coins.

CORA LEE PARK - OWNER www.berningauction.com

Terms: ID required to register. Cash or approved check day of sale. Not responsible for theft or accident. No warranties expressed or implied. Everything sold as is. Announcements day of sale take precedence.

WANTED

Land to rent or custom farm or just custom work, late model equipment. Stan Kauk, Colby 785-462-7833 or 785-694-8475.
C 4/9-5/28

Retiring Military family looking to buy house near Sharon Springs, KS. Nothing in town. Please call Sarah Martinek with any available properties. (609) 367 2164.
G 4/2-6/2

Wanted to rent grass 2014 beyond 785-824-8092.
C 3/26-4/16

Junk batteries, non-ferrous metals and iron. Darrel Bowen. Phone 785-899-2578.
G tfn

Wanted to Rent: Grass for 20 to 60 Cow/Calf Pairs. Call Conrad Van Kooten, 785-854-8220 or Bryant Tharman, 785-302-1271.
N 5/14

Wanted: Grass to rent or purchase in Norton or Graham County. Contact Lee Hardy at 785-871-0832.
N tfn

SERVICES

Tree Service: Call Abel Tree Service LLC for tree removal, stump grinding and trimming. Equipped with a bucket truck. In the Colby area now! Call 785-871-7275 now for free estimates. Satisfaction guaranteed.
C 4/16-5/7

Hydrostatic Pipe Testing- Routine testing of your oil and gas wells will increase production and limit downtime due to pipe failures. Great Plains Pipe Testing. Mark Brecheisen: 620-605-8378 or 620-423-5017

There's hope for your family member to continue living in their home, every need met. Licensed, excellent Ref. Would love to be a part of your families care plan. Colby and surrounding area. Please call Bev 785-269-7122 or Lorraine 785-443-5717.
C 4/9-4/16

I specialize & analyze the situation surrounding the environment. Pines, Deciduous, Evergreens, Shelterbelts, Fruit Trees,

Cleanup, Removal, Nurseryman, Gardening, Landscaping, Shrubs & Yard Care. Dave's Tree Service 785-443-0994.
C 3/26-4/16

Tree Trimming & Removal Call Kerry @ Infinite Connections, bucket truck, stump grinder, insured and free estimates. Family owned and operated. 785-626-4261.
C 2/12-7/23

Almanza's Interior Services, Inc.. Drywall specialist. Drywall hanging, drywall finishing, texture and paint. Free estimates. References available. Spanish call (785) 332-5353. English call (785) 890-6223. Goodland.
G 2/12-tfn

Hickert Enterprises LLC. Windmill repair and service. Tree trimming and removal. (785) 475-2729.
O 1/1-6/25

Burlington-Goodland area. Residential overhead door service and repair, 20 years experience. Call Gary at (719) 350-0705.

G 7/17-tfn

Do you have weeds every year? Want a great looking yard? Call JM Tree & Lawn Service to fill ALL of your needs this year. We offer full tree care and sprinkler system maintenance/installs as well. Call today to get a free quote. 785-462-6908.
C 5/22-TFN

Have a leaking roof and need it repaired? Look no further. Murray Roofing & Construction, LLC will give you a free estimate and roof inspection. We specialize in residential and commercial roofing systems. Call our office to schedule an inspection. 785-462-6908.
C 4/3-TFN

Call us before you pay your next insurance premium. American Family Insurance - Rita Peters Agency - Colby 785-462-8246.
C 1/25-TFN

CAT'S TNT for jewelry, material, vinyl graphic designs, massages, quilting and more! Stop by 1018 Main, Goodland, or call (785) 890-2287 for more

information.
G 3/28-tfn

Experienced with texturing, painting, cleanup/removal of clutter. Experience with Rental management experience. Have 16 ft. car trailer for rent. 785-462-5861.
C 3/25-TFN

Abel Tree Service-Fully insured, free estimates, stump grinder, bucket truck. Deep root fertilizer. 785-871-7275.
N tfn

Dan is back! Dan Geschwentner. Small remodeling and repair jobs. Call 785-443-3673.
C 2/3-TFN

Steamway Carpet Cleaning Co. 1-800-292-9497. Lou Ann and Lyle Broz, Owners.
N tfn

Jacobs Service, your authorized Traeger Grill dealer. See our selection of grills, pellets, rubs and spices at West Highway 36, Norton. Pellets are \$13.50 per bag EVERY DAY!
N tfn

YOU HAVE HEARD IT'S COMING, IT'S HERE!

The Colby Country Trader Gun Shop
WILL OPEN MONDAY, APRIL 14TH

Large inventory of new & used guns Buy • Sell • Trade

LANCE BOLYARD, OWNER
280 E. 4th, Colby • (785) 460-0476 • colbygunshop@st-tel.net
9-6 Mon., Tues., Wed., Fri., 9-7 Thurs., and 9-4:30 Sat.

POLARIS X³ SALES EVENT

REBATES UP TO \$1300 FINANCING AS LOW AS 2.99%

AMERICAN IMPLEMENT

Goodland, KS location
Phone: (785) 890-7575
1104 W. Hwy. 24
Toll free: (877) 320-4020
www.americanimplement.com

Still Guaranteeing Memorial Day Installation

Stockton MONUMENTS

10% Off All In-Stock Inventory
Sale Ends April 25, 2014

521 Main • Stockton, KS • 785-425-7111

www.keithleymonuments.com

SHOWING

The Great American Wheat Harvest
A Documentary Film

ONE NIGHT ONLY!

April 25, 2014: 7PM & 9PM
Doors open at 6:00PM & 8:30PM

Frahm Theater, Colby Community College
1255 S. Range Ave. Colby, KS

Tickets: \$5.00 at the door - Includes Meet & Greet with Producer/Director Conrad Weaver, Local Harvester Jim Deibert, and others!
www.GreatAmericanWheatHarvest.com

Chef Keith's Easter Brunch
Sunday, April 20th
City Limits • 11 a.m. - 2 p.m.

Burgundy Sirloin Tips	Wild Rice Almandine
Glazed Baked Ham w/Brandy sauce	Thyme Potatoes
Shrimp Scampi	Broiled Asparagus
Cheese Tortellini's w/Marinara	Fresh Fruit and Salad Bar
Crab Cake Egg Benedict	Bread Pudding
Assorted Quiche Lorraine	Coffee, Tea, Soft Drinks

CITY LIMITS BAR & GRILL
2227 S. RANGE

\$17.99 Adults
\$7.99 - Children under 10
Free - Children under 3

Reservations encouraged at 785-462-6565

Your YOU + FREINDS + FAMILY = A REDUCED Commission Rate!

Special Wheat Harvest AUCTION
Wednesday, June 11, 2014

TEAM UP with other sellers in your county and SELL MORE equipment to get a REDUCED commission rate!

Deadline to list is Thursday, May 8, 2014

Contact your local sales representative, Kevin Barnett, (785) 443-1722

Full Auction Services • No Freight Cost
Worldwide Marketing • B1& Returns

BIG IRON ONLINE AUCTIONS
Experience the POWER of BigIron.com

WOOFER PUMP & WELL INC.
1024 Oak Ave.
Hoxie, KS 67740

Office Phone 785/ 675-3991 Fax: 785/ 675-3990
Shop Phone 785/ 675-3023 E-mail: woofpw@ruraltel.net

Irrigation, Domestic, Geothermal & Environmental Services

- Irrigation Pump Repair
- Irrigation Well Drilling
- Domestic Well Drilling & Repair
- Environmental Drilling
- Windmill Repair
- Solar Systems
- Geothermal Pump Systems

For all your irrigation needs call:
Lance Shepard (785) 675-8376

DERMATOLOGY
James M. Swinehart, MD
Board-Certified Dermatologist

- Skin Cancer: MOHS surgery is the current standard of care for treatment of skin cancer.
- Moles, Cysts, Growths
- Fat Removal
- Allergies/Rashes
- Acne-Cryotherapy
- Hair Restoration
- Wrinkle Treatments

Dr. Swinehart will see patients in Burlington, CO and Goodland, KS, on this day: **Friday, April 18, 2014**

To make an appointment: call (303) 744-1202.
Visit our website at: www.coloderm.com

DOLLAR GENERAL

SINGER

HEAVY DUTY SCHOOL MODEL SEW & SERGE SEWING MACHINES

These are brand new 2014 Singer school model sewing machines. These sewing machines remain UNSOLD. **THEY MUST BE SOLD NOW!**

These special heavy-duty school model machines have a metal hook and built for years of extended service. All machines are new in factory-sealed cartons. **25-YEAR LIMITED WARRANTY INCLUDED.**

WHAT IS A SEW & SERGE SEWING MACHINE???

FIRST, IT IS A SOPHISTICATED SEWING MACHINE... That does buttonholes (any size), invisible Blind Hems, Monograms, Double Seams, Zippers, Sew on Buttons, Darning, Appliqué, Zig Zag, Basting, Pin Tucking, Quilting, and much more. Just turn the dial to Sew Magic!

SECOND, IT HAS A PROFESSIONAL SERGING STITCH... This allows you to sew the seam and serge the edge of the material in one operation. With the purchase of an optional cutter you can trim the fabric.

THIRD, IT IS DESIGNED TO SEW ALL FABRICS... Without pressure adjustments, such as Levis, Canvas, Upholstery, Nylon, Stretch Materials, Silk, Percale, Organdy, and...

THEY EVEN SEW LEATHER!!

NOW YOU CAN HAVE IT ALL IN ONE MACHINE! TRAINED DEMONSTRATORS ON DUTY

YOUR PRICE WITH THIS AD \$129
Layaway available with \$50 down

ONE DAY ONLY

Thursday, April 24 • 11 a.m. - 4 p.m.
at **DOLLAR GENERAL**
999 Rose Avenue • Burlington, CO

For your convenience we accept cash, checks, VISA, MasterCard, American Express, Discover and Layaway available. For more information call 1-866-342-0508. Singer is a registered trademark of the Singer Company, LTD.

New Body Style GMCs!

2014 GMC Sierra 1500 SLE Sonoma Red, Cloth, 9 miles	2015 GMC Sierra 2500HD White, Cloth, 6.0L Engine, 26 miles
2015 GMC Yukon SLT 4WD White Diamond, Leather, Sunroof, 9 miles	2014 GMC Sierra 1500 Base White, Cloth, 9 miles

FINLEY MOTORS, INC.
1520 Highway 27, Goodland, KS 67735 • Toll free: (800) 525-3701 • "Your volume & variety dealer!"
WWW.FINLEYMOTORSINC.COM **GMC**

HometownFamilyRadio

with

7102.1 PURE ROCK **105.3 COYOTE COUNTRY**

bring you

THE ZONE 93.9

McCook's HIT Music Station

Septic Tanks pumped and systems installed. Call Logan Septic and Water. 785-543-7772.
N tfn

A&S Plumbing 24/7, 20 years experience. No job too big or small, fully insured. Ask about our 10% discount for parts and labor for first time customers. Spencer Stevens, owner. 785-664-8180.
N tfn

Murray Roofing and Construction will have a salesman in Norton giving free estimates on roofing, siding and remodeling. Contact 785-462-6808.
N 5/23

JM Tree & Lawn will have a salesman in Norton giving free estimates on tree, lawn and sprinkler systems. Contact 785-462-6808.
N 5/23

Graham Dirt Works, LLC offers Trenching Services for water lines and electric lines, installation or replacement of water hydrants; backhoe services and general skid steer work, etc. Willing to travel. For info call Mark at 785-543-4336.
N 6/30

Keiswetter Lawn Care, Mowing, raking, and edging. Still doing rototilling. 785-877-2771.
N 4/30

SOIL TESTING. Call Brent Johnson at 785-734-2748 or email brentlb@gmail.com. 15-18
SFH 4/10-5/1

I AM DOING ROTOTILLING and aerating. Norman Morrow. 332-3424 or 772-7409. 13-16.

DOOR & WINDOW REPLACEMENTS
SEAMLESS RAIN GUTTERS
GENERAL CARPENTRY REPAIRS
Ron Lucke
CUSTOM BUILDING
(719) 346-8840
CELL: (719) 349-8840

SFH 3/27-4/17

HARDWICK'S PAINTING and property preservation. Interior and exterior painting, barn and wood restoration. Fully insured. Free estimates. Harwickspainting.com or call Don at 308-423-2730. 13-15.
SFH 3/27-4/10

BECKMAN Carpet Cleaning: Truck-mounted steam cleaning. Carpets, upholstery and autos. Call (785) 626-4548.
SFH tfn

PETS

Pomeranian puppies for sale just in time for Easter 785-754-2225.
C 4/16

FOR RENT

40x40 Building for storage, located in Colby 785-462-2445.
C 4/16-4/23

221 W. 16th, Goodland. Small 2 bedroom home. Call 4B Rentals at (785) 728-7322.
G 4/16-4/23

For Rent in Oakley - 15 minute drive from Colby. 2 BR Apt. \$400 per month, water and gas paid. 785-671-1240.

C 4/9-4/16

Nice 3 bedroom house with attached garage in Goodland. Call (785) 821-0106.
G 4/9-5/9

Spacious 1 bedroom apartment in Goodland. No smoking, pets negotiable. Call (307) 575-0975.
G 4/9-4/23

2 bedroom apartment in Goodland with garage, washer and dryer, stove, dishwasher and refrigerator. No smoking and no pets. Call Delmer Musil at (785) 890-3017.
G 4/9-4/16

Storage Units For Rent - Different sizes available. Call 785-443-8658. Colby.
C 3/12-4/16

Houses and apartments in Goodland. All sizes. Call for details. (785) 890-6538.
G 1/15-tfn

For rent: 2 bdr. apartment, close to downtown Oberlin, city bill paid, \$350 per month plus \$350 deposit. Contact Johnson Realty, Inc. (785) 475-2785.
O 11/13tf

2 bedroom apartment, Brookwood Apartments, Oberlin, (785) 475-3450.
O 36tf

Downtown office space available at 5th and Franklin, Colby. Call 785-462-3939.
C 9/19-TFN

Independent living apartments at Prairie Meadows and Bieber Cottages in Norton now available for persons 55 years and above. For more information about these comfortable living apartments, call Administrator Nancy McGinnis, phone 785-877-2601.
N tfn

Houses & Apartments. Cole Real Estate in Goodland 785-899-2683.
G tfn

FIFTH STREET APARTMENTS in Bird City has for rent two-bedroom duplex apartments. Applications must income qualify. For information contact N.W. Kansas Housing, Inc. at (785) 421-2151 or pick up an application at Century II in Bird City. We offer Equal Housing Opportunity and are handicap accessible.
SFH tfn

REAL ESTATE

3 Bedroom, 1 Bath, corner lot, in Colby. Call 785-460-7996.
C 4/9-4/30

Vintage Home - Grinnell, KS 2,014 sq. ft., double size corner lot, 4 bed, 2 bath, original woodwork updated, red metal roof, fenced, city utilities. 102 Jefferson, Grinnell, 785-462-0027.
C 4/2-4/23

GOODLAND HOME FOR SALE: 102 Circle Drive. 4 bedroom, 2.5 bath, 2 car garage, corner lot. Call (308) 225-1027.
G 3/26-4/26

REAL ESTATE SERVICES

It pays, not costs to use our services. For all your auction and real estate needs contact Duane McEwen at 785-877-3032. Homerange Real Estate, Broker Gary Richards.
N tfn

Make the Weiser Choice - Contact Weiser Realty for all of your real estate needs at 785-877-2185. Jolene L. Weiser, Broker; Samantha M. Hager, Sally Nelson, Robert Wyatt, salespersons.
N tfn

Professional Service Listing and Selling your property. Contact Larry Riggs, Broker or Jeanette Krizek, Listing Agent. 785-678-7163. Kansasland Realty and Auction.
N tfn

FARM SERVICES/ EQUIPMENT

Disc Rolling-Rolling on the farm. Call Ron Lewis, Eustis, NE. 308-486-3501.
N tfn

VEHICLES/ RECREATION

2005 GMC Feed Truck Duramax Engine, Allison Transmission with Kuhn Mixer Box - 80,000 785-462-0117.
C 4/16

1998 Ford Windstar Van & 1982 Sierra GMC Pickup. Engine & transmission in good shape. \$1,000 for both or \$750 each OBO. Call 785-626-3845 or 785-626-2899.
C 4/16-4/23

LIVESTOCK

Charolais and Charolais Red Angus cross bulls. BBB Charolais, Oakley, KS (785) 672-4145.
O 3/5-5/28

Mader Hereford. Hereford bulls for sale. Call Wilma Mader (785) 675-8351, Keith Bowie, (785) 675-1198, Shane Bowie (785) 475-4404.
O 2/5-5/28

FAMILY CENTER FOR HEALTH CARE **CMCI** **CITIZENS MEDICAL CENTER**

COME GROW WITH US

Citizens Medical Center, Inc. (CMCI) is leading the way in excellent health care in Northwest Kansas. CMCI is an equal opportunity employer and offers competitive wages and excellent benefits! CMCI is growing to meet the needs of our community and we want you to Come Grow With Us!

Please Contact: Human Resources
CITIZENS MEDICAL CENTER, INC.
100 E. College Dr., Colby, KS 67701
785-460-4877 EOE
www.nwkshealthcare.com

Specials for the week April 18-24
Drinks included. Dine-in or carry out!

Friday, April 18: Tuna Melt
Saturday, April 19: Smothered Burrito
Sunday, April 20 (EASTER!!): Ham and much more
Monday, April 21: Potato Bar
Tuesday, April 22: Lemon Chicken over rice
Wednesday, April 23: Tatortot Casserole
Thursday, April 24: BBQ Meatballs

Jct. of Hwys. 27 and 40, Sharon Springs, Kansas • Phone: 785-852-4664

Penny's Diner

KETTERL'S 5 K ANGUS

Calving Ease Growth

SELLING REGISTERED YEARLING ANGUS BULLS



Final Product

Vernon Ketterl
(785) 475-3636



Really Windy

Todd Ketterl
(785) 470-7208

SIRES INCLUDE
Upside
Consensus 7229
Basin Excitement
Renegade
Final Product
Really Windy

All with top carcass performance



NEW LISTING

421 Smith Dr.
4 BR/2 Bath
Give Pat a call today!

Residential Lots \$14,000 to \$19,000
408 W. 6th, Oakley \$22,000
205 W. Main, Jennings \$37,800
1115 Cty Road R, Levant \$45,000
615 Longview, Oakley \$48,500
170 S. School **SOLD**
621 Cornell, Oakley **CONTRACT**
419 Colby Ave., Oakley **CONTRACT**
820 S. Garfield **CONTRACT**
101 S. Penn Ave., Jennings \$65,000
605 W. 7th, Oakley \$69,500
1100 14th, Hoxie \$69,900
730 S. Grant **CONTRACT**
1954 Cty Road 9, Levant \$92,000
2099 Cty Road CC **CONTRACT**
207 S. Monroe, Grinnell \$100,000
425 W. 5th \$134,500
120 E. Plum \$147,500
421 Smith Dr. \$149,500
250 E. Ash \$161,900
1035 Villa Vista Dr. \$165,000
1040 Villa Vista Dr. \$198,500
1807 Harvey Court \$249,500

www.HomeLandRE.com

NEW LISTING

615 Longview, Oakley
3 BR/1 Bath
Call Toni today!

COMMERCIAL LISTINGS
Commercial building site 1-10 acres North of I-70 on Willow Avenue East of Whistle Stop. Give Tom a call today!
63 Acre parcel or 2-6 acre lots located along I-70 frontage, Colby, KS. \$17,000/acre Call Marilyn!
Colonial Steak House Oakley, KS - CONTRACT

AG LAND LISTINGS
1,600 Acres Prime Cropland Logan County, KS - SOLD
160 Acres Thomas County Cropland with Buildings - 3 West and 4 South of Colby, KS. \$4,750/Acre Call Rock!
160 Acres CRP Sherman County Land - \$1,750/Acre Call Tom!
160 Acres Sherman County Irrigated Cropland - \$3,000/Acre Call Tom!
320 Acres Prime Cropland Thomas County, KS located North of Brewster \$2,775/Acre Call Rock!

Rory Bedore - Owner (785) 443-3261
Pat Sloan (785) 462-2703
Marilyn Meyer (785) 443-4032
Toni Lindberg (785) 443-1653
Rock L. Bedore (785) 443-0136
Tom Harrison (785) 672-0429
Jerry Wycoff (785) 675-8556
Mike Scott (785) 675-8556

(785) 462-8255
1055 S. Range
PO Box 508
Colby, KS

HomeLand REALTY AUCTION

You protect your home, auto and business. Have you protected your family's future if you're not there? Fredrickson Insurance Agency can assist you with all of your life insurance needs.

Fredrickson Insurance Agency
785-475-3883

183 S. Penn Ave
Oberlin, Kan.
(785) 475-3883

"We sell insurance but specialize in service."
fredricksoninsuranceagencyinc.com

PASTURE WANTED

GRASSPASTUREWANTED
to rent, Mark Hilt. 785-332-2054. 303-638-5107 (cell). 11-16.
SFH 3/13-4/17

GRASSPASTUREWANTED
to rent, Adam Jones, 785-332-6206.
SFH tfn

FOR SALE

Twin bed with box springs/mattress \$100. Unpainted solid wood dresser with 4 large drawers \$100. Sleeve ironing board \$20. 2-drawer gray metal filing cabinet \$20. Contact 785-462-8112 after 5 p.m.
C 4/16-4/23

Used Lumber 2"x4"x14' Used Tin 27 ga. 3'x22.5' Call 785-567-6142 or 785-693-4412
O 4/16-4/23

1948 Philco Radio/Phonograph cabinet, good condition. Both radio and phono work. \$100.00. Call (719) 350-0705.
G 1/1-tfn

For Sale: A slightly used wood pellet fireplace insert and 20 bags of Pellets. This Timber Ridge Pellet Fireplace Insert is an efficient heating upgrade with a beautiful bay design and EPA certification. U.S.A. 45-lb. hopper provides up to 24 hours of warmth. User-friendly control panel with auto start, works with masonry or zero-clearance fireplaces. Minimum opening required: 36in.W x 16in.D x 21in.H. Asking \$2000.00 O.B.O. Please call for more information at 785-475-3510.
O 11/6TF

Third row seats for GMC Yukon. Two pieces, gray leather, good condition. \$300 OBO. Call or text (785) 202-0607 or (785) 470-1188.
O 11/6TF

2 Harley Davidson die cast models. 1-1:10 scale Hot Wheels HD Softail. 1-1:10 scale Maisto FLSTS Heritage Springer. Still in original boxes! Call Gary at (719) 350-0705.
G 9/25-tfn

AWP toolbelt/pouches with kidney belt and suspenders. Paid \$100 plus, asking \$50. Call Gary at (719) 350-0705.
G 9/25-tfn

FIREWOOD FOR SALE in Goodland. Call (785) 890-7224 or (785) 821-2814.
G 12/12-tfn

For Sale - Electric Pronto M51 Sure Step Wheelchair. New battery. \$500.00. 875-874-8012.
N 4/16

Rubber stamps, custom made, The Country Advocate, 1205 Main. Goodland, Kansas. (785) 899-2338.
G tfn

KANSAS CLASSIFIEDS

For Sale
SPRING CLEANING sale at Mid-America Piano now thru April 19. Pre-owned pianos from \$488, organs \$288 and up. Benches, moving equipment, tools, music, accessories, priced to sell fast! Mid-America Piano, Manhattan, 800-950-3774, www.piano4u.com

Health/Beauty
WERE YOU IMPLEMENTED WITH A ST. JUDE RIATA DEFIBILLATOR LEAD WIRE between June 2001 and December 2010? Have you had a this lead replaced, capped or did you receive shocks from the

lead? You may be entitled to compensation. Contact Attorney Charles Johnson 1-800-535-5727

Help Wanted

Anthony, Kansas is seeking Water/Wastewater Operator. High School Diploma/GED and valid driver's license required. Applications and complete job description: www.anthonykansas.org. 620-842-5434. EOE. Open until filled.

Help Wanted

CONTRACT SALESPERSONS sell aerial photography of farms, commission basis, \$1,200-\$2,500 weekly depending on sales experience, travel required. More info at msphotosd.com or call 877/882-3566

Help Wanted

"PartnersInExcellence" OTR Drivers APU Equipped Pre-Pass EZ-pass passenger policy. 2012 & Newer equipment. 100% NO touch. Butler Transport 1-800-528-7825 www.butlertransport.com

Help Wanted/Truck Driver Drivers - CDL-A. Train and work for us! Professional, focused CDL training available. Choose Company Driver, Owner Operator, Lease Operator or Lease Trainer. (877) 369-7885 www.CentralTruckDrivingJobs.com

Help Wanted/Truck Driver Exp. Flatbed Drivers: Regional opportunities now open with plenty of freight & great pay! 800-277-0212 or driveforprime.com

Help Wanted/Truck Driver EXPERIENCED DRIVER OR RECENT GRAD? With Swift, you can grow to be an award-winning Class A CDL driver. We help you achieve Diamond Driver status with the best support there is. As a Diamond Driver, you earn additional pay on top of all the competitive incentives we offer. The very best, choose Swift. • Great Miles = Great Pay • Late-Model Equipment Available • Regional Opportunities • Great Career Path • Paid Vacation • Excellent Benefits Please Call: (602) 714-9455

Help Wanted/Truck Driver Hiring One Ton and 3/4 Ton Pickup trucks to deliver RV's. \$750 Sign-on Bonus, 4 Terminals and 8 Backhaul Locations. Call 866-764-1601 or www.foremosttransport.com.

Help Wanted/Truck Driver TSI Kansas, Inc. is seeking qualified OTR Drivers! Two years experience, clean MVR. Pay up to .45cpm, Medical Insurance. Apply at tsikansas.com and call 785-632-5183.

Misc. For Sale

Your Land is Your Down Payment. And we'll match your tax refund up to \$8,000. Singles starting at \$39,900. Doubles starting at \$59,900. Less than perfect credit OK! 866-858-6862

CARD OF THANKS

I would like to thank the Norton County Hospital nursing staff for the wonderful care they gave me while I was in the hospital. I also want to thank everyone for the cards, visits, phone calls and for the concern and care from our family. A special thank you to Dr. Griffey for the care I received. - Ron Temple
N 4/16

TO GIVE AWAY

6 kittens to give away to good homes, preferably

indoors. 6 weeks old on 4/13/2014. Will deliver. Call (785) 943-5480.
G 4/16-4/23

AUCTIONS/SALES

Large Firearms and Ammo Auction. See davedavisauctions.com Saturday, April 26, 2014, 11 a.m. at the Armory in Broken Bow, Nebraska. Call Kim 308-872-6413 or Jim 308-870-1785 to place a bid.

N 4/23

GARAGE SALES

Moving Sale - 911 Kennedy Avenue, Norton. Friday, April 18, 8 a.m.-7 p.m. and

Saturday, April 19, 8 a.m.-1 p.m. Shop items, antique clocks, household items, miscellaneous. Come see!
N 4/16



Join your family and neighbors in celebration of the Easter holiday with the help of these great sponsors.

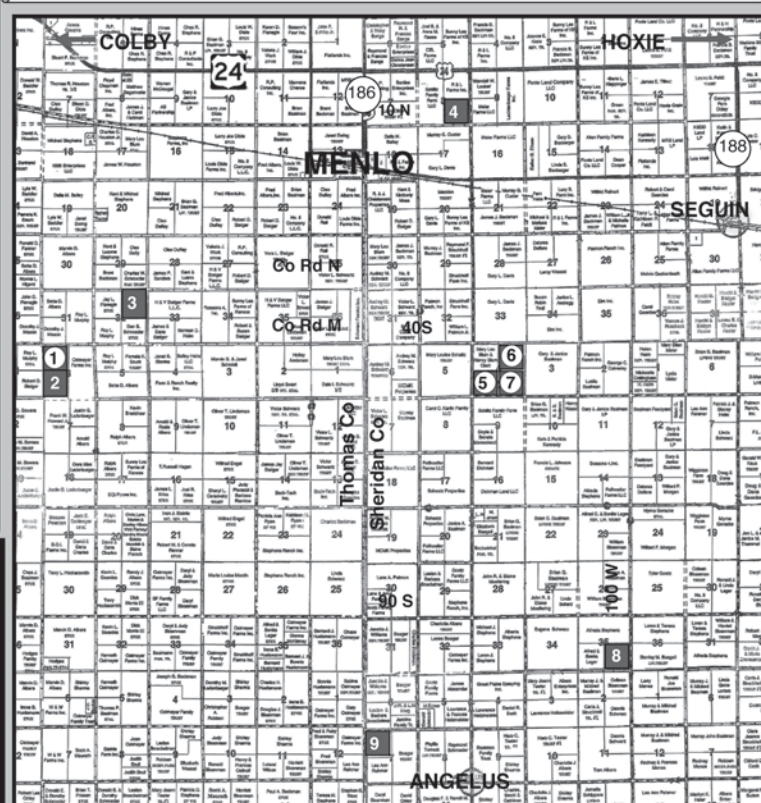
Here's hoping your Easter holiday is filled with wonderful moments. May you enjoy all of His blessings in abundance at this Holy time of year.

1,440 ACRES IRRIGATED & DRYLAND CROPLAND, THOMAS & SHERIDAN CO, KS
"MULTI-PARCEL" LAND AUCTION
TUES., APRIL 22, 2014 @ 10:30 AM, CDT

LAND LOCATION: See Map! **SIGNS WILL BE POSTED!**
MANNER OF SALE: This real estate will be offered as a "MULTI-PARCEL" auction in 9 individual tracts and in combinations of tracts. It will be sold in the manner that produces the highest aggregate bid. There will be OPEN BIDDING on all tracts and combinations of tracts during the auction as determined by the auction company. Bids on individual tracts, tract combinations, and the total property may compete. Auction procedure and increments of bidding are at the discretion of the auction company.
TERMS: 10% down day of sale, with the balance to be paid on or before May 22, 2014, or upon such terms as may be acceptable to the Sellers. Personal and corporate checks are acceptable for the down payment with the final payment to be made in certified funds. All funds will be held by the auction company in their trust account or by an identified title/escrow company. Bidding is not contingent upon financing. Financing, if necessary, needs to be arranged and approved prior to the auction. All bids are subject to Sellers confirmation. A 6% buyer's premium applies. Broker participation available - Call for details! **Announcements made day of sale take precedence over printed material and previously made oral statements.**
MINERAL RIGHTS: Sellers will retain 1/2 of the mineral rights for a term of 10 years, or for as long as productions, if any, exists. Minerals are believed to be 100% intact and are under a current oil and gas lease.
CROPS: Subject to the tenant's rights on the 2014 planted wheat crop and Buyer(s) will receive a 40% share of the crop at no expense to the Buyer(s). 40# on N, 5# of sulfur along with Rave, have been applied to the growing wheat.
FSA INFORMATION: All FSA farm program payments associated with the 2014 crop year will be subject to the new 2014 Farm Bill provisions. See chart below for FSA information.
CLOSING: Closing will be on or before May 22, 2014.
POSSESSION: Date of closing, subject to tenant's rights on the planted wheat crop. Buyer(s) will have the right to enter on the open land upon full execution of the contract and payment of the earnest money for general farming & irrigation purposes. All open acres have been sprayed with Roundup, Banvel & 2-4-D at no expense to the Buyer.

AUCTION LOCATION: CITY LIMITS CONVENTION CENTER, COLBY, KS

SELLERS: SCHILTZ FAMILY



REAL ESTATE TAXES: Sellers will pay taxes for 2013 and prior years. Taxes for 2014 will be the responsibility of the Buyer(s). See chart below for 2013 taxes.
IRRIGATED ACREAGE: All irrigated acres have been in a corn and soybean rotation. This land has excellent yields.
AGENCY: Farm & Ranch Realty, Inc., its agents and representatives, are the Exclusive Agents of the Sellers.

IRRIGATION INFORMATION

TRACT 1: There is 1 irrigation well on this tract covered under Water Right File #29464 and is permitted for 274 AF at 560 GPM. Place of use for this well also covers Tract 2. The irrigation motor on this tract is the property of the tenant and is not included in this sale. It can be purchased for \$1,000.
TRACT 5: There is 1 irrigation well on this tract covered under Water Right File #7105 and is permitted for 960 AF at 1040 GPM. Place of use for this well also covers Tracts 6 and 7.
TRACT 6: There is 1 irrigation well on this tract covered under Water Right File #11083 and is permitted for 290 AF at 925 GPM. Place of use for this well also covers Tracts 5 and 7.
TRACT 7: The 1980 Reinke model 680 Sprinkler on this tract is the property of the tenant and is not included in this sale. It can be purchased for \$12,000.
In the event Tracts 2 and 7 sell separately, the Buyer(s) of those tracts will sign a quit claim deed at closing to transfer their undetermined interest in the water rights covering their respective tracts to the Buyer(s) of Tracts 1, 5 & 6.

TRACT	LEGAL DESCRIPTIONS	AUCTION ACRES	ESTIMATED IRRIGATED CROPLAND ACRES	ESTIMATED DRYLAND CROPLAND ACRES	NOZZLE PACKAGE	PLANTED ACRES	WHEAT BASE/ DCP YLD	CORN BASE/ DCP YLD	SOYBEANS BASE/DCP YLD	2013 TAXES
THOMAS COUNTY										
1	NW/4 of 6-9-31	160.0	122.0	38.0	550	48.6	78.8/38*	171.0/129*		\$2,495.26
2	SW/4 of 6-9-31	160.0		160.0		152.0±				
3	NE/4 of 32-8-31	160.0		159.7			40.6/38	81.3/129		\$568.82
SHERIDAN COUNTY										
4	SE/4 of 8-8-30	160.0		158.8			78.3/38	39.1/129		\$658.64
5	SW/4 of 4-9-30	160.0	121.0	35.5	425	36.0±				
6	NE/4 of 4-9-30	160.0	121.0	35.5	450	36.0±	227.5/38*	179.8/129*	29.7/29*	\$4,563.32
7	SE/4 of 4-9-30	160.0	121.0	35.5	450	36.0±				
8	SE/4 of 35-9-30	160.0		157.8		78.8	39.4/38	78.8/129		\$608.94
9	NW/4 of 7-10-30	160.0		153.0		153.1	73.0/38	37.6/129		\$574.88
		1,440.0	485.0	933.8		540.5				

AUCTIONEER'S NOTE: This is some of the finest cropland that Thomas and Sheridan County have to offer. Some of this land has been in the Schiltz Family since the early 1900's. The land is near the county line South of Hwy 24 and Menlo, Kansas. The land is near level and has been under minimum till for many years. The Schiltz Family has taken care of this property and it is very evident when you see it!
The water rights are combined on Tracts 1 & 2, and Tracts 5, 6 & 7. Should these tracts sell separately, some rules will apply concerning the place of use of the water. Contact the auction company for more information.
The sprinkler on Tract 1 is offset on to Tract 2 by about 200'. Should the tracts split, the Buyer of Tract 1 will have one year to move the sprinkler North so it does not infringe on Tract 2. There will be no survey provided as we are selling the entire quarter. Surveys, if desired will be the responsibility of the Buyer.
There will be an information meeting at 10:30AM on Thursday, April 3rd at the Farm & Ranch Realty, Inc. office located at 1420 W. 4th in Colby.

For a virtual tour visit
www.farmandranchrealty.com

FARM & RANCH REALTY, INC.
1420 W. 4TH • COLBY, KS 67701
TOLL FREE - 1-800-247-7863
DONALD L. HAZLETT
BROKER/AUCTIONEER
"When you list with Farm & Ranch, it's as good as SOLD!"

INTERNET BIDDING AVAILABLE!
Register by April 10, 2014 to bid online!
Call for details!

