

# Classifieds

## Announcement

**The Thomas County Conservation District** is currently taking orders for sixteen varieties of bare-root trees. Order deadline is March 27. 785-462-7482, ext. 38 for information.

—3/8—3/25—

## Help Wanted

**Clarence M. Kelley Youth Services, Inc.** is looking for youth house parents in Oberlin, KS. Salary negotiable, based on experience. Includes monthly vehicle allowance, health, dental, eye insurance, along with room and board. Send resume to KDS, PO Box 5555, Topeka, KS 66605.

—3/15—3/22—

**OTR driver** to haul cattle. CDL and good references required. Job based in Hoxie. For information call 1-800-542-7838.

—3/6—3/19—

**Men or women** to work 15 days out and 15 days in or at the home. Need 3 people. If you want to know more, please call 785-443-2049, ask for Randy.

—3/1—3/20—

## Notice

**Cash** for dead TV's and VCR's. Also will repair. Free estimates. Call anytime 785-462-7657.

—3/1—3/29—

## HELP WANTED

Thomas County Health Department has an opening for a **Registered Nurse**, three days a week. For more information, call 785-462-4596. Applications may be picked up at the Health Department, 350 S. Range, Suite 2, Colby, Kansas.

## Sonic Drive Inn:

Now taking applications for Assistant Manager. Must be available weekends & holidays please apply in person starting \$8.00 phr & possible benefits

**CALL (785)462-7199**

ask for Shannon to set up interview



Colby Community College is accepting applications for the position of a three month full-time **Program Assistant**. Job may lead to full-time status. The successful applicant must have good computer skills, excellent verbal and written skills. Proficiency with Microsoft Word and Excel preferred. To apply, submit letter of application and resumé with references by March 22, 2002 to Director of Public Information, Colby Community College, 1255 S. Range, Colby, KS, 67701. Applications will be accepted until position is filled.

*Equal Opportunity Employer*

## COME JOIN OUR TEAM!

**Citizens Medical Center and Prairie Senior Living Complex** are looking for caring, qualified professionals to join our expanding Healthcare team. We have the following opportunities available:



### CITIZENS MEDICAL CENTER

- RN - Full-time night position.
- **Ancillary Services Coordinator** - Full-time position
- CNA/NA - Part-time night Nursery position.
- CNA/NA - Part-time day position.
- **(2) EMT/Medical Assistant** - Part-time positions (Weekends and Holidays)
- **Laundry Tech** - Part-time position



### PRAIRIE SENIOR LIVING COMPLEX

- CNA - Part-time evening position.
- **Medical Records** - Full-time position

We offer competitive wages and a benefits package that includes health and dental insurance with a portion of the premiums paid. If you want the opportunity for professional growth and the chance to make a difference in the lives of others, please contact: Margaret Kummer, Human Resources, Citizen Medical Center, 100 E. College Dr., Colby, KS 67701, 785-462-4877. EOE

## Apartments for Rent

**1 bedroom.** Clean, utilities included, \$325/monthly plus deposit. Call 785-462-2337 after 6:30 p.m.

—3/13—3/26—

**Newly decorated** 1 bedroom studio apartment. All utilities paid. Call 462-3285 or 462-5185.

—3/12—3/20—

**2 & 3 bedroom brick apartments.** Stove, refrigerator, & dishwasher furnished, W/D hookups, off street parking, patio. Call 462-3285 or 462-5185.

—3/12—3/20—

**Condo:** 2 bedroom, 1 1/2 bath, washer and dryer. 785-462-3939.

—2/25—tfn—

**1 or 2 bedroom apartments.** Available now. Call 462-2331.

—1/24—tfn—

**2 bedroom apartment** in Colby. Utilities paid, no pets. Call 785-672-3516 in Oakley.

—1/16—tfn—

**Nice furnished three bedroom** apartment. Utilities paid, 30 day lease, no pets. Adeline Arnold 785-462-6017.

—12/28—tfn—

**Spacious two bedrooms**, large kitchen fully furnished. Also available: nice rooms with a community kitchen, utilities and cable paid. Rent as low as \$225 per month. 785-462-3251.

—12/10—tfn—

**Sunflower Apartments** of Colby offers affordable housing. 1 and 2 bedroom apartments. Stove, refrigerator, and garbage disposal furnished. Water, trash and sewer paid, utility allowance. Apply at 1170 S. Franklin Ave., or call Lynn Cameron at 462-6349 for application. TDD 1-800-766-3777. Equal Housing Opportunity.

## • NOW HIRING • ALL SHIFTS

Full-time and Part-time shifts available!



2000 S. Range  
Colby  
Apply online @  
www.mckansas.com

The Housing Authority of the City of Colby (Colby Housing Authority) is accepting applications until noon on Friday, March 22, for the position of Maintenance Worker II. Employment shall begin in early April. Entry-level wage is \$8.83 per hour; 40-hour work week, Monday-Friday. Benefits include the cafeteria plan, retirement plan (KPERs), health insurance, holidays and vacation. Applications and a detailed job description are available at Colby Housing Authority, 600 S. Mission Ridge Avenue, Colby, KS, Monday-Friday, 9:00-5:00. Closed during noon hour.

*Equal Opportunity Employer*



Colby Community College is accepting applications for two **Mathematics Instructors**. Master's degree in mathematics and previous postsecondary teaching experience preferred. Full-time, 9-month position. Courses to be taught include college algebra, statistics, calculus I, II and III, differential equations, statics and plane trigonometry. To apply, submit letter of application and resumé with references and all postsecondary transcripts by April 15, 2002 to: Director of Public Information, Colby Community College, 1255 S. Range, Colby, KS, 67701.

*Equal Opportunity Employer*

## Houses for Rent

**3+ bedrooms**, fenced backyard. Call evenings 462-2475.

—3/15—3/19—

**Large 3 bedroom**, 2 bath home with basement, attached garage, large backyard. 6 month lease required. Call 462-3285 or 462-5185.

—3/12—3/20—

**One bedroom house.** Partially furnished, no pets. 462-2529.

—3/7—3/22—

## For Rent - Mobile Homes

**3 bedroom, 2 baths**, central heat/air, all appliances. Available now. 462-7468.

—3/4—3/15—

## Office for Sale

**Downtown Colby.** Newer building. Call evenings 462-2475.

—3/15—3/19—

## Misc. for Sale

**Washer and dryer**, toddler bed, baby high chair, play pen. 462-3086.

—3/15—3/21—

**New Sundance hot tub.** Delivery possible, good price. Call 785-443-1339.

—3/13—3/15—

**One new Therapeutic massage chair** with heater. Must sit in to believe the results. Call 785-443-1339 for a demonstration.

—3/13—3/15—

**2001 three horse** goose-neck trailer with mid-tack. White, \$5,800. 785-877-2021.

—3/13—3/19—

**Butcher steers.** Whole, halves, quarters. No implants, will deliver to the locker. 785-687-3731.

—3/11—3/15—

**1991 Boss** 6'x16"x6'6" bumper stock trailer. Mats, 6,000# axles, \$2,300. Men's roping saddle, like new, \$500. 785-462-7499 evenings.

—3/11—3/18—

## NOW TAKING APPLICATIONS

For Housekeepers.  
Must be available to  
work weekends  
*Apply in person.*



1925 S. Range •  
Colby, Kansas

## Childcare

**Looking for daycare?** Colby Community College Resource and Referral can help you find quality childcare. Call 785-462-3984 ext. 250.

—3/15—3/21—

**Registered daycare** will have a full time position for 18 months and older available beginning March 25th. Part time positions also available. Please call Kim at 462-9734.

—3/13—3/19—

**Registered day care** provider has two openings for ages 2 and over. Call Kay 462-9998.

—3/12—3/25—

## Vehicles for Sale

**1994 Lincoln Mark VIII.** Top condition, 2 door, green, tan leather, fully loaded, 4.6L, four cam, V-8, 130k, privately owned, \$7,950 O.B.O. by 3/22/02. 785-462-6447.

—3/18—3/22—

**1996 Chrysler New Yorker.** Black, beautiful car, good price. Call 785-443-1339.

—3/13—3/15—

**1997 Jeep Grand Cherokee Ltd.** Fully loaded, leather. 462-6305 leave message or 462-3361, ask for Lynn.

—3/13—3/19—

**1998 Ford Supercab** shortbed, stepside, Lariat, V-8, leather, 4x4, off-road pkg., CD changer, power, 72k miles. Immaculate. 785-443-1339.

—2/22—tfn—

## Motorcycles

**Wanted to buy:** Harley Davidson motorcycle. 1974 - 1985 model preferred. Newer model considered. 785-479-2163.

—3/15—3/22—

## Wanted

**Teenager looking** for yards to mow for summer. References available. 462-2164/462-0840.

—3/13—3/22—

## Wanted

**Alfalfa hay**, cane hay, and dry corn. Competitive bids. Please call Scott Foote at 785-386-4519.

—2/1—tfn—

## Pets / Supplies

**1 fawn male** registered Pug. Very lovable. Call Brandi at 462-9961 or Pattie at 462-3642. Asking \$350.

—3/13—3/22—

**AKC Siberian Huskies.** 4 males, 2 females, \$200 each. 785-672-3948 after 6:00 p.m.

—3/13—3/15—

## Garage Sales

**240 S. Chickamauga Ave.** Friday 1:00 - 5:00 p.m. Saturday 9:00 a.m. - 1:00 p.m. Moving sale. Household items, some furniture, clocks, and other miscellaneous items.

—3/13—3/15—

**1020 Villa Vista** - in the backyard. Friday 3:00 - 6:00 p.m. Saturday 8:00 a.m. - 1:00 p.m. Huge garage sale. Baby items, shower enclosure, clothes dryer, computer, desk, home interiors, kitchen items and much more.

—3/13—3/15—

## Some like it HOT...

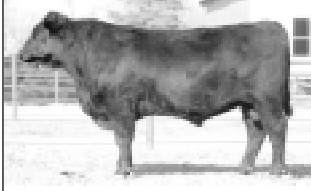
and some like  
to shop the  
COOL want  
ad way!!



**The Colby Free Press - 462-3963**

## Green Garden Angus

Calving Ease Growth Carcass  
Predictable Genetics from Start to Finish  
**43rd Annual Production Sale**  
**Monday, April 1, 2002 • 1:00 p.m.**  
at the farm 1 1/2 mi. south of Lorraine, Kansas  
*Selling: 165 Head*  
**84 Performance Tested Bulls** 47 Eighteen month bulls  
37 Yearling bulls  
**81 Superior Females** 45 Spring cows with calves  
30 Fall cows with calves  
6 Open Heifers  
*Your source of superior carcass seedstock for your future or those who feed your cattle.*  
**Sires Represented:**  
• EXT • SS Traveler 6807 T510 • Gardens Prime Time  
• Gardens EXT 4137 • Scotch Cap OB45 • Gardens Highmark  
• Scotch Cap Perfection • Gardens Bravo



Birth Wean Milk Year SC IMF REA Fat %RP  
+0.6 +44 +18 +78 +44 +31 +15 +.019 -.220  
Call or write for a sale catalog  
**Dick or Shelly Janssen**  
1356 Ave. M Ellsworth, KS 67439  
785-472-3752  
janssen@grapevine.net  
www.greengardenangus.com



## ROUTE MANAGER

Colby, KS area

- Earning potential \$30-\$60k
- Paid training
- Full benefits
- Advancement Opportunities

**Requirements:**

- At least 21 years of age
- Valid drivers license w/good driving record history
- Able to pass pre-employment drug test and DOT physical

**Call...**  
**1-800-3EMPLOY**  
**1-800-336-7569 or**  
**1-888-733-3804**  
*EOE/AA*

## CERTIFIED REHABILITATION AIDE

Gove County Medical Center has a full-time position open for a Certified Rehabilitation Aide. it is preferred that applicant also possess a current CNA license. Excellent benefits and retirement program. Apply at Gove Medical Center, 520 W. 5th Street, Quinter, KS 67752 or contact Human Resources at 785-754-3341 for additional information. Drug screening required. Preference given to applications received before Friday, March 29th, 2002.

## • HELP WANTED • BARTENDERS Day Shift WAITRESS Day Shift

Pay commensurate  
with experience.  
*Apply in Person*  
*or for more information call*  
**DAVID POOL, Gen. Mgr.**  
Colby Country Club  
785-462-6443

## Secondary Spanish Teacher

The Northwest Kansas Educational Service Center has an opening for a Secondary Spanish Teacher for the 2002-2003 school year. Qualifications: Candidate must be certified to teach in Kansas or be eligible to obtain a certificate to teach in Kansas, a Spanish Endorsement is preferred. This position will teach over the Interactive Network, training will be provided. For position details and application information, contact Jan Schartz, ITV Coordinator or Dan Thorton, Executive Director at 785-672-3125. Application Deadline: Position is opened until filled.

*Equal Opportunity Employer*



NORTHWEST KANSAS TECHNICAL COLLEGE  
Goodland

**NWKTC** has a new class in  
Communications Technology  
starting May 2, 2002-and there are a few spaces left!

Begin with the basics of electricity and electronics and progress into complex electronic circuits, equipment frames, digital switches as well as microwave and cellular transmissions. In twenty months you will be ready for a new career in the telephony field.

- Learn from experienced instructors
- Train on industry equipment
- Excellent reputation across the nation
- Nationally accredited college

**Financial Aid** is available for qualifying students.  
**Give us a call today for enrollment information.**  
**785-899-3641 or 800-316-4127**

# LANTERN PARK MANOR

Are you looking for a rewarding career in  
**Long Term Care?**  
**CURRENTLY AVAILABLE POSITIONS:**

- **LPN or RN** - FT Position (40 hrs. per week), Excellent Salary, \$2,000 Sign-on Bonus

Applications can be picked up at:  
105 E. College Drive or call  
*EOE/M/F/D/V* 785-462-6721

# Classifieds

## Real Estate

## Real Estate

## Real Estate

## Real Estate

## Farm Equipment

## Real Estate

### \*STRIKING HOME\*



Loaded w/features such as high ceilings, loft, large windows, huge master suite, beautiful landscaping & so much more.  
CALL MOLLY at 462-6700  
1165 Wheatridge \$198,000.00

### \*JUST LISTED\*



Brick ranch on one level, 24x30 garage, situated on a tree lined street.  
CALL MOLLY at 462-6700  
970 Mentlick Dr. \$78,500.00

### \*INVITING 2-STORY\*



3 BR, 2 bath older home w/personality, full bsmt, large rear yard w/deck & privacy fence  
CALL MOLLY at 462-6700  
250 S. Garfield \$66,900.00

### \*HOME IN REXFORD\*



Priced to get your attention. 3 BR, 2 bath modular on large lot. Seller wants an offer.  
CALL STEVE at 462-3904  
320 Maple \$20,000.00

### REAL ESTATE FOR SALE:

TH-4.2a @I-70/K25 exit adjoining McDonalds, Colby

### UPCOMING AUCTIONS:

3/16/02: CCC Endowment Auction - Comfort Inn - Colby  
3/20/02 - 1,040ac Scott County Land & Feedyard Auction for 1<sup>st</sup> National Bank of Scott City - 4H Bldg, Scott City  
3/26/02 - 480ac irrigated cropland - N/2 of 11-9-31 & NW/4 of 5-10-30 - Sale will be held at the 4-H Building in Oakley  
4/6/02 - Robert Mapes Complete Dispersal Farm Machinery Auction - N of Norton

VISIT OUR WEB SITE AT [www.farmandranchrealty.com](http://www.farmandranchrealty.com)

### \*LOVE AT FIRST SIGHT\*



A newer 4 Br, 2 bath home situated on 2.34 acres just south of Colby. A lovely home w/lots of space inside & out.  
CALL MOLLY at 462-6700  
1080 K-25 \$93,000.00

### \*WARMTH & CHARM\*



A home with large rooms & many, many upgrades. Situated on a corner lot & a very spacious, equipped kitchen.  
CALL MOLLY at 462-6700  
715 S. Garfield \$73,500.00

### \*HOME FROM YESTERYEAR\*



PICTURE NOT AVAILABLE  
A truly amazing older 2-story home with endless upgrades & features, 2-car grg. Plus separate workshop. A home to CALL MOLLY about at 462-6700!!!!

### \*CLOSE TO SCHOOLS\*



This 4 Br, 2 bath home has a finished basement with 2 exits plus a 1 Car Grg.  
CALL MOLLY at 462-6700  
565 W. 2nd \$78,500.00

### \*THE RIGHT STUFF\*



Great kitchen w/cherry wood cabinets, charming sun room, great decorative style. A home to view!!  
CALL MOLLY at 462-6700  
975 Brookside \$102,000.00

### \*COMFORT & CHARM\*



An attractive cottage w/lots of "NEW" throughout, bsmt & detached 1-car grg, plus a corner lot.  
CALL MOLLY at 462-6700  
1180 W. 5th \$45,000.00

### \*GREAT LOCATION TO BUILD\*



4.5 acres SE of Colby w/electricity & water. CALL MOLLY at 462-6700!  
NE/4 of 17-9-31 \$27,000.00

### \*CHARMING 1 1/2 STORY\*



This house offers 4 BDRS, 1 1/2 baths, single car garage and new central air & heat.  
CALL ROCK at 462-3904  
575 W. 7th \$38,000.00

Rock Bedore \* Molly Oliver \* Ed Currier  
Mike Bailey \* Steve Hazlett \* Ron Evans

## FARM & RANCH REALTY, INC.

1420 W. 4<sup>TH</sup> - P.O. BOX 947  
COLBY, KS 67701

785-462-3904 or 1-800-247-7863

DONALD L. HAZLETT  
BROKER

WHEN YOU LIST WITH FARM & RANCH, IT'S AS GOOD AS SOLD!

## South Park Apartments Meadowlark Manor

- Rent based on income -

785-462-6763  
EQUAL HOUSING OPPORTUNITY

## For Home Purchases or Refinancing CALL ME 1st!!!

ROBERT  
DIBLE

HL  
Financial  
Services



140 W. 4th • Colby, KS

785-462-3359

1-800-658-4697

American Home Loans

Conventional • VA • FHA

NO APPLICATION FEES

### For Sale

- 3 Grain holding tanks 800-1000 bu. on legs with elevating legs (make offer) 10 - 3750 bu. grain bins augers out \$500
- 2 Air compressors: one with large air tank with 2 5HP electric compressors motor and one with standard tank and 5HP Motor
- Automatic bagger, Scales dump hopper
- Screen machine with 18 drums (sizer)
- Flex auger and accessories
- Stretch wrap machine
- Roaster with traveling table and cooling table (one of a kind)
- Steel building 74 x 130 with loading ramp 14x14 Electric Door
- 97 x 63 Balen Building
- 70 x 120 storage building 20' sides
- Many other grain related equipment

contact: John Ostmeyer at  
505 N. Franklin • Colby KS 67701  
Bus. Ph: (785)462-8158  
Home Ph: (785)462-6221

## First-time buyer?

100% financing plus  
closing costs available!



ELAINE  
KOERPERICH,  
Vice  
President  
MEMBER  
FDIC  
EQUAL HOUSING  
LENDER

Check out what we have to offer:

- ✓ Conventional Loans
- ✓ Refinancing
- ✓ FHA/VA Loans
- ✓ Rural Housing Loans

**FARMERS & MERCHANTS**  
BANK OF COLBY  
Together...Making a Difference  
240 W. 4th • Colby • 462-3321

ABSOLUTE

# LAND AUCTION

## 480 ACRES IRRIGATED CROPLAND THOMAS & SHERIDAN COUNTY, KS

SELLER: THE BANK OF OAKLEY, KS

TUESDAY, MARCH 26, 2002 @ 10:30 AM, CST  
AUCTION LOCATION: 4-H BUILDING IN OAKLEY, KS

### LEGAL DESCRIPTION:

TRACT 1: N/2 of Section 11-9-31 West of the 6<sup>th</sup> P.M., Thomas County, Kansas  
TRACT 2: NW/4 of Section 5-10-30 West of the 6<sup>th</sup> P.M., Sheridan County, Kansas  
LAND LOCATION:  
TRACT 1: From Menlo, KS, go 5 miles S. on County Road 37, then 1 mile W. on County Road K, then 1/2 mile N. to the SE corner of the property.  
TRACT 2: From Angelus, KS, go 1 mile W. and 1 1/2 miles N. to the SW corner of the property.  
POSSESSION: Possession shall be day of closing.  
CROPS: 100% of the 2002 growing wheat shall go the Buyer(s)  
MANNER OF SALE: The property will sell in 2 individual tracts only.  
FSA INFORMATION:

### TRACT 1

Total Acres	Crop Acres	Dry Acres	Sprinkler Acres	Wheat Acres/Yr	Oats Acres/Yr	Corn Acres/Yr	Grain Sorghum Acres/Yr
320	279.4	51.4	228	86.3/38	2.8/41	122.9/127	13.6/86

### TRACT 2

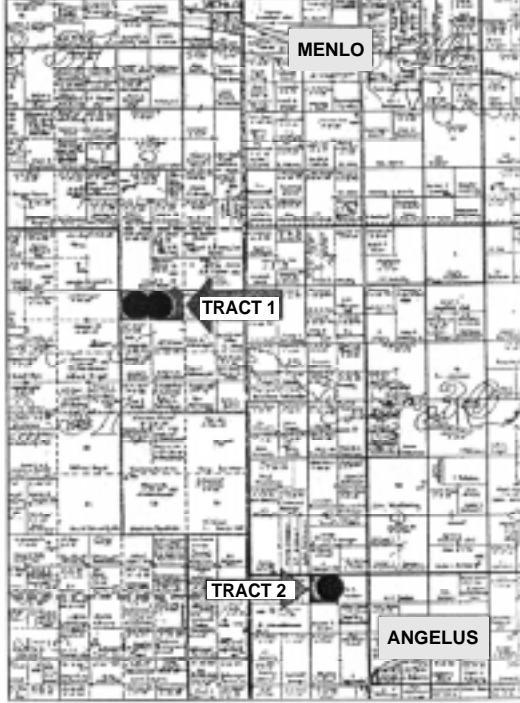
Total Acres	Crop Acres	Dry Acres	Sprinkler Acres	Wheat Acres/Yr	Oats Acres/Yr	Corn Acres/Yr	Grain Sorghum Acres/Yr
160	112.1	26.2	100 (Est)	34.8/38	0.4/41	54.7/127	5.7/86

FSA PAYMENTS: Buyer shall receive 100% of all 2002 FSA-PFC contract payments.  
MINERALS: All of the Seller(s) interest going to the Buyer(s).  
TAXES: Seller shall pay taxes for 2001 and all prior years. Buyer shall pay taxes for 2002 and subsequent years.  
TERMS: 20% down day of sale, balance to be paid on or before April 24, 2002, or upon such terms as may be acceptable to the seller. Personal and corporate checks are acceptable for the down payment with the final payment to be in certified funds. Bidding is not contingent upon financing. Financing, if necessary, needs to be arranged and approved prior to the auction. This sale is an ABSOLUTE auction. Announcements made day of sale take precedence over printed material.  
EVIDENCE OF TITLE: Seller will provide title insurance to the Buyer in the amount of the purchase price with the premium to be paid one-half by the Seller and one-half by the Buyer. Title evidence will be provided on sale day. Buyer may close as soon as closing documents are prepared - no later than April 24, 2002.  
EASEMENTS: This sale is subject to all rights-of-way and easements, whether recorded or not, and to any oil and gas leases of record.  
AGENCY & ESCROW: Farm & Ranch Realty, Inc. and its representatives are the Exclusive Agents of the Seller. The Gordon Company will serve as escrow agent and closing agent for these transactions with the fee to be paid 1/2 by each party.

VISIT OUR WEBSITE AT [www.farmandranchrealty.com](http://www.farmandranchrealty.com)

## FARM & RANCH REALTY, INC.

Ed Currier, Listing Agent  
P.O. Box 947 • 1420 W. 4<sup>th</sup>  
Colby, KS 67701  
Donald L. Hazlett, Broker/Auctioneer  
(785) 462-3904 • (800) 247-7863 TOLL FREE  
\*When You List With Farm & Ranch, It's As Good As Sold!\*



### IRRIGATION INFORMATION:

TRACT 1	CERTIFICATE OF APPROPRIATION	PERMIT #	GPM	ACRE FEET	2001 TAXES
2 Wells	25783	25783	1,035 GPM	220 AF	\$1,808.38

TRACT 2	CERTIFICATE OF APPROPRIATION	PERMIT #	GPM	ACRE FEET	2001 TAXES
3 Wells	8534	17304	600GPM	222 AF	\$919.42
	31254	31254	350 GPM	185 AF	
			255 GPM	122 AF	

## NICE 2 & 3 BEDROOM APARTMENTS FOR RENT

TO QUALIFYING  
COUPLES/FAMILIES.

Colby Housing Authority

785-462-6763

Equal Housing Opportunity

I ♥  
THE  
CLASSIFIEDS

## BULLS For All Reasons

MARCH 20, 2002 • 1:00 CST  
MIDWEST SALE BARN - NORTH BARN • McCOOK  
— Selling 55 High Performance Angus Bulls —

### CONNEALLY LEADTIME



### BREEDING SEASON GUARANTEE

### BULLS SIRED BY:

N BAR PRIME TIME D806,  
BON VIEW SPECTRUM 1176,  
LEACHMAN QUEST,  
RR DAQUANTAE 789E,  
GAR PINNACLE,  
PLOWMAN 1627  
OF MILLBRAE SAR,  
SITZ ALLIANCE 6595  
LEACHMAN EXACTA

The calving ease specialist, high maternal, one of the highest marbling sires based on ultrasound data

Lunch will be available.

ALL BULLS CAN BE CARED FOR  
UNTIL MAY 1ST AT NO ADDITIONAL  
EXPENSE TO THE BUYER.

## Blackrose Angus Ranch

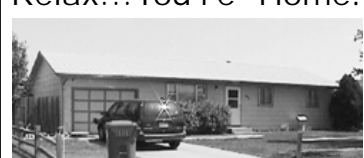


Robert & Gloriann Spencer  
R.R. 1, Box 99B, Culbertson, NE  
308-345-3377 or 3945

B B  
Angus

Chase & Lori Beeby  
Rt. 1, Box 28, Lebanon, NE  
308-895-2417 or 308-340-6438

### Relax...You're Home!



You deserve the finest! This 4 BR, 3 bath home has many amenities. Call PAT today!

### SPECTACULAR VIEW!



You deserve the finest! This 4 BR/3 bath home has many amenities. Call PAT today!

### Old Style Charm



5 BR, 3 bath, 1 1/2 story bungalow. Original woodwork & hardwood floors. Call PAT KOCH.

### Great Potential



Design your family room in this 3 BR, 2 bath ranch w/lg. kitchen + fenced yard. Call PAT SLOAN.

### Family Wanted



4 BRs, family room with fireplace + main floor laundry. Call PAT SLOAN.

### Affordable Beginnings



Start here with this 3 BR, 2 bath home on a spacious corner lot close to school. Call PAT SLOAN.

### Better Take a Look!



Call MARILYN to see this 3 BR, 1 1/2 story home. Recent updates.

### Warmth & Charm



4 BR, 2 bath home w/full finished basement. Perfect for your family. Call MARILYN today!

### Available Now!!



Enjoy long summer evenings in this exceptional 3 BR home w/3 car garage and many amenities. Call MARILYN.

### Great Starter Home



3 BR, 1 bath & full unfinished basement ready for your plans. FAG, CA. Call MARJ.

### Convenient Features



3 BR home w/main floor laundry, formal living room & family room w/fireplace. Call MARJ today!

### Welcome Friends



Spacious 5 BR, 3 bath brick home w/family rooms & rec room. Call MARJ for a tour today!

### MAKE AN APPOINTMENT TO SEE ANY OF OUR CURRENT LISTINGS:

1/2 sec. Sherman Co. dryland  
430 La Casa Drive  
20 Plymouth Drive  
12 Plymouth Drive  
1060 Wheatridge  
715 Sunset Drive  
1111 S. Court

565 Valley Drive  
1275 Lue Drive  
155 N. Thompson  
2780 N. Range  
575 W. 6th  
1145 E. 8th  
685 Webster

940 E. 9th  
1040 E. 8th  
1125 Court Place  
535 S. School  
155 S. Lincoln  
455 W. 5th  
610 Webster

1114 S. Court  
1001 Court Terrace  
1435 W. 3rd  
320 S. Lincoln  
635 W. 4th  
Lots 22 & 23, El Chaparral

1/4 sec. Thomas Co. Dryland  
415 S. Grant  
1133 Co. Rd. R - Levant  
1815 W. 5th  
917 Court Terrace  
625 Cherokee  
665 W. Plum

### COLBY

Warren C. Hixson - Broker  
785-462-6818

Pat Koch • 462-6119

Pat Sloan • 462-7495

Marilyn Kersenbrock • 462-2703

B.J. Melvin • 462-2483

Marj Van Camp • 462-2648

HomeLand  
REAL ESTATE

website: [ColbyHomeland.com](http://ColbyHomeland.com)

410 N. Franklin • Colby, KS  
785-462-8255  
[homelandre@aol.com](mailto:homelandre@aol.com)

114 W. 12th • Goodland, KS  
785-899-3060  
[homelandg@aol.com](mailto:homelandg@aol.com)

GOODLAND  
Tom Harrison - Branch Broker  
785-852-4200

Rosanne Anderson • 899-7464  
Ken Christiansen • 694-2644  
Mitch Hixson • 899-9270  
Suzanne Garrison • 899-6899

### OAKLEY

Jerry Wycoff • 672-3763

## NOTICE

### AD RATES

For Classified Word ads are as follows:

1-2 days	25¢/word
3-4 days	18¢/word
5-9 days	17¢/word
10-14 days	16¢/word
Monthly (tfn)	15¢/word

(\*Price reflects 15 word minimum ad. Ads must be in our office by 12:00 noon the day before. In case of error, call us the FIRST day your ad runs since we will not be responsible for errors after the first day/week.

### COUNTRY ADVOCATE

\$6.00/per week - 10 words  
(additional 25¢ word thereafter)  
13¢/word pick-up rate (with 3 consecutive day run in Free Press)

ADS MUST BE IN THE OFFICE BY 12:00

NOON ON FRIDAY.

DISPLAY (box) AD DEADLINE FOR FREE

PRESS IS 3:00 P.M. TWO DAYS BEFORE