

Deaths

Pierre C. "Pete" Henry

BREWSTER — Pierre C. Henry, 92, died Wednesday, June 12, 2002, at Prairie Senior Living Complex, Colby. He is survived by his brother Louis of Campbell, Neb.; his sister Malina Shawver of Santa Monica, Calif.; and 10 nieces and nephews.

Mr. Henry was preceded in death by his parents, one brother and four sisters. He was born on March 24, 1910 in a sod house near Upland, Neb. to Amand and Lizzie (Breault) Henry and raised on farms near Upland and Campbell, Neb. His mother died when he was 13 and his immediate responsibility was to care for and manage the household for his brothers and sisters while his Dad earned a living.

Mr. Henry left Nebraska for California when he was 21. He signed on with the Civilian Conservation Corps forest service to harvest trees and build roads. The Forester recognized his innate engineering talent and assigned him the responsibility of being the librarian where he immersed himself in a surveying course.

He became the head of the surveying crew which built many roads and fire lanes in the Sierra Nevada Mountains.

In the late 1930s, Mr. Henry was hired by Douglas Aircraft Company to work in the engineering department designing and constructing fighter planes.

In the 40s, he was in and out of the Army Air Corp where he was a flight engineer for the B-17, B-24, and B-29 aircraft. He also participated in top secret training with some of the airmen from his base being the ones that dropped the atomic bomb.

In 1949, Mr. Henry rented and later purchased land south of Brewster from former neighbors in Nebraska. He provided the labor on the farm until he was 88 years old and made the management decisions until his death.

He was a member of the Farmer's Supper Club in Oakley.

In 1998 he formed a foundation to assist local communities and area youth.

Funeral services were held Monday, June 17, 2002 at the Kersenbrock Funeral Chapel and burial was in the Brewster Cemetery.

Gari Sue Moore

Gari Sue Moore, 30, a Colby resident, died Tuesday, June 11, 2002.

Service were held on Saturday, June 15, 2002, at the Cheyenne Wells (Colo.) Christian Church.

Gari Sue Moore was employed by Citizens Medical Center. She was also taking classes at Colby Community College in the nursing field. She was an Emergency Medical Technician with advanced certifications.

Memorials in her name can be made to the Cheyenne Wells EMTs.

Hospital

CITIZENS MEDICAL CENTER
Friday, June 17, 2002

Admissions

Nicole Rhea and infant female, New Almelo

Dismissals

Ramona Lyon, Colby
Gene Whittaker, Brewster
Mycleta Fryback, Colby
Violet Anderson, Colby
Jean Bruggerman and infant female, Rexford

Markets

Quotes as of close of previous business day
Hi-Plains Co-op

Wheat	\$2.85
Corn	\$1.95
Milo	\$3.03
Soybeans	\$4.40

LOST

1 aluminum folding ramp.
4 foot by 7 foot long. Lost on Country Club Dr.
785-462-1000.

Community Calendar

THURSDAY, JUNE 20

Pioneer Memorial Library Board, library, 7 a.m.
Kiwanis, Student Union, noon
Picnic in the Park, Fike Park, noon
Preschool Storytime, Pioneer Memorial Library, 3:30-4 p.m.; K-2nd grade
Family Night, Pioneer Memorial Library, 7-7:30 p.m.
Family History Center, 1145 S. Franklin, 7-9 p.m.
Tumbleweed Chorus, United Methodist Church, 8 p.m.
Step-parenting discussion group, 8:30 p.m.; call Deb at 462-3870 or Randy at 462-7168.
Downtown Alcoholics Anonymous, City Hall basement, 8:30 p.m. (non-smoking)



Pete Henry

Local women's group hold end of year installation

Disciples Women's Fellowship
Fifteen members of Disciples Women's Fellowship of First Christian Church met at the Ramada on Tuesday, June 4, for an "end of year" salad supper, and installation service.

Morna Jordan, worship and study chairman, led the Litany of Installation for the new year 2002-2003. The following ladies will be the leaders for the group, beginning in September 2002: Pat Hartford, Elva Livingston, Hazel Duffey, Anita Kistler, Marguerette Edmundson, Gwen Sloan, Lois Myers and Morna Jordan.

Disciples Women's Fellowship is divided into two groups.

Mary group which meets the second Wednesday of each month at 3 p.m., and Martha group which meets the first Tuesday of each month at 7:30 p.m.

High Plains Lions Club

The High Plains Lions Club met June 10 for their first meeting of the summer. Lion Francis Britton conducted the meeting in the absence of Lion President Larry Koon.

Lion Steve Thompson of the Gem Lions Club and Linda Jones, wife of Virgil Jones, were visiting guests.

Lion Lacey Gilbert let the flag salute and Lion Jones gave the prayer. Lion Sherry Brenn led the group in singing *America*.

Lion Jones, Koon, and Chris Trundle, reported they had helped with the fun walk at the week-end Rod Run.

Lion Mary Hurr reported on the upcoming Relay for Life, Aug. 17. Lions Hurr, Larry Brenn, Sherry Brenn, Jones, Melda Moore, and Trundle will make up the Lions club team.

Lion Roger Hale made a motion for the board of directors to discuss providing luminaries for each of the Lions members who had died from cancer. The motion passed the board will take action at their next meeting.

It was decided to give the Pickin' on the Plains event \$300 prize money for the youth contests.

Lion S. Thompson presented Lions Hurr, Moore, Gilbert, and Cassey Jueneman with the LCIF pins.

A thank you card from the Colby Head Start was passed around for members to see. The card was in reference of the club's helping with a vision problem.

Lion Britton reported that the new elected governor would preside over the next meeting of installing the new officers.

Lion Hurr won the club's jackpot drawing, and the meeting adjourned.

Club News

The next meeting of the High Plains Lions Club will be June 24.

Brewster Prairie Gem 4-H

Members of the Brewster Prairie Gem 4-H Club and their parents listened to Deputy Sheriff, Jim Engel discuss drug awareness and problems in Thomas County on June 10 at Hunter Hall in Brewster.

This session was held as part of the club's requirements to enter a notebook on the topic of drugs at the Thomas County Fair.

Each family of this 4-H club is supposed to have a home session to discuss drug prevention. The 4-H members are to then make a page about the family activities that will be put into the club notebook.

The presentation by Mr. Engel was part of the regular monthly meeting of the Brewster club. Michael Eicher opened the meeting by leading the flag salute. Ryan Allen and Whitney Schultz led members and parents in singing *Yankee Doodle Dandy*.

Roll call was answered by 17 members. Each member told their favorite 4-H project. Officer, leader, and committee reports were the business for the evening. The fair booth committee is gathering ideas for the club booth.

The tour committee brought to the club a possible new format for the event.

Tanya Gray said she would be willing to travel to the homes of members and take pictures of projects. She would then have the committee members produce a slide show for use on the tour date. Club members liked this idea so it will be used for tour on July 21.

The tour will begin at Hunter Hall in Brewster with a starting time of 4 p.m. Members are to still bring projects that can be displayed in the hall. This will also be parents' night and each family

LOOK what we have!
Amber Waves Apartments

- Washer/Dryer Hookups
- Fully Equipped Kitchens
- Lawn Care provided

FREE RENT For One Month

CALL
785-465-8113

Loss of child can be difficult at all ages

Dear Plain Sense: It has been five years since my son was killed in an accident. Friends and relatives keep telling me to stop crying and get on with life. Because my son was a grown adult, with wife and children, these people seem to think my grief shouldn't be so intense. Are they right?

It is obvious to most people that the pain of losing a young child is a very intense feeling. We mourn their innocence, their short time in our lives, and the void that is left behind. The loss of an adult child is no less painful. As parents, we believe that our children



Mental Health

• Plain Sense

will be part of our life, for the rest of our life. We expect them to be there for us as we age. Parents commonly believe they will die before their children, and do not expect to outlive them.

The relationship between parents and their older children develops from

a parent/child interaction to a different, more mature relationship, becoming one of friendship and sharing. In addition, parents expect their children to continue the family lineage, traditions and values, and sometimes even the family home and/or business.

The loss of an adult child is very painful, and the support of family and friends helps in successfully moving through the stages of grieving. In time, the pain lessens and fades. But the feelings and memories will always be a part of your life.

Find someone to talk with who can help you through the grieving process. Friends and relatives do not always know what to say, or how to say it. There are support groups available, as well as clergy and mental health professionals who have experience in helping people through such difficult times.

Contributed by Cora Lee Pfannenstiel, RN, BSN, Community Outreach Consultant/Nurse Educator

The views expressed here are those of the individual writer and should not be considered a replacement for seeking professional help.

Thank You

We wish to express our sincere thanks to Dr. Regier and her staff, Brian Unruh, P.A. and Dr. Fercha. Also to the nurses, LPN's, and aides that helped her in the hospital. Pastor Reed Hartford from the Christian Church who has been a constant comfort over many illnesses. Last, but not least, we want to thank our family and friends for their prayers and support, for the food brought in and the lunch at the VFW Hall given by ladies of the Christian Church, The Eastern Star and the VFW Auxiliary. We would also like to say "thank you" for the memorials, flowers and cards. God bless each and everyone of you!

**THE FAMILY OF
THELMA LIVINGSTON**

Howland Heating & Air Conditioning



Installation or service of

- furnaces
- air conditioners
- duct work
- sheet metal work



Call Roger for a bid on installation

785-626-9608

Cell phone: 626-0327

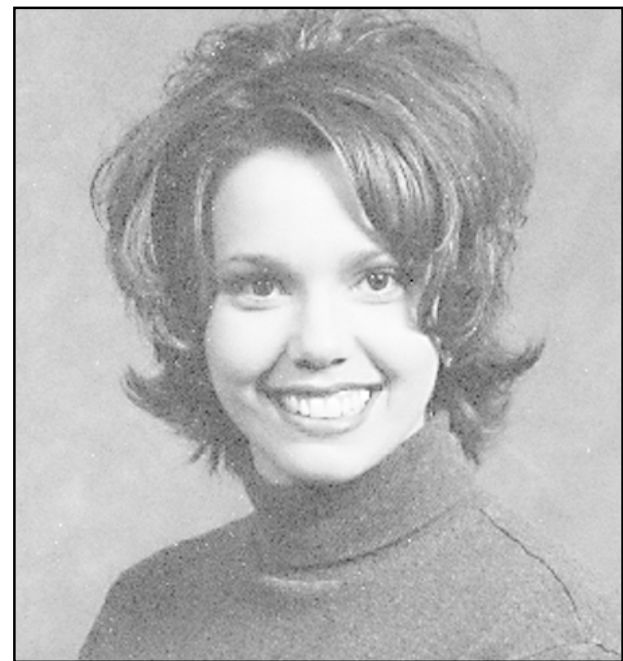
Servicing all brands.

Now accepting:

Picnic In The Park

Bring your lunch and lawn chair and enjoy the musical talent of....

Shawna Eberle



Thursday, June 20th 12:00 noon Fike Park

SPONSORED BY COLBY/THOMAS COUNTY CHAMBER OF COMMERCE, COLBY CONVENTION & VISITORS BUREAU AND YOUR COLBY FREE PRESS.

MOONLIGHT Madness Sale

TUESDAY, JUNE 18 ONLY!
5:00-8:00 p.m.

WE WILL CLOSE AT 4:00 P.M. AND RE-OPEN AT 5:00 P.M. FOR THE SALE.

BUY 1 PLANT, GET 1 FREE!

Buy any plant at regular price and get the second plant of equal or lesser value, FREE!

INCLUDES ROSES, TREES, SHRUBS, BEDDING FLOWERS, HANGING BASKETS AND MORE.

25% OFF

CLAY & PLASTIC POTS & PLANTERS

GOLDEN PLAINS GARDEN CENTER & GREENHOUSE

1140 PLAINS • COLBY • 462-7528

AMERICAN CANCER SOCIETY
Hope. Progress. Answers.™

1-800-ACS-2345
www.cancer.org

©2000, American Cancer Society, Inc.