

Community Page



Sundays are now free at the museum

Starting on Sept. 29, 2002, there will be no admission at the Prairie Museum of Arts and History on Sundays. The board of the Thomas County Historical Society voted on Sept. 16 to make Sundays a FREE day. The board feels that this would make the museum available to everyone who wants to visit. Members of the Thomas County Historical Society have always been admitted to the museum at no charge as one of the many benefits of membership in the organization. Now everyone can visit on Sundays.

The museum has two new exhibits. A temporary exhibit "Developing Our Community Character" is a photographic history of Colby and "Batteries Not Included" is a permanent, interactive toy exhibit. In addition to the new exhibits are exhibits of glass, ceramics, furniture, clothing, dolls, jewelry, silver, coins and stamps.

Also on the 24 acre site are buildings moved to the site to interpret the late 19th century and early 20th century period of area history. The sod house was built on site in 1985 and furnished as a 1890s sod home. The Eller House was moved to

the site in the early 1980s and displays furniture, clothing and objects representing farm life during the trying 1930s. Accompanying the home is the Vacin Barn where farm animals such as goats, sheep, chickens and cows are kept in the barn in the summer. The 1915 country Lone Star Church and the 1887 one-room Nicol School were moved to the site in the late 1980s and denote the importance of education and faith to the settlers. The Cooper Barn, one of the largest barns in Kansas, was moved to the site in 1992. It houses "Prairie Grasses to Golden Grains: Agriculture on Northwest Kansas, 1870s-1990s" an exhibit of machinery, tools and photographs telling over 100 years of agricultural and settlement history.

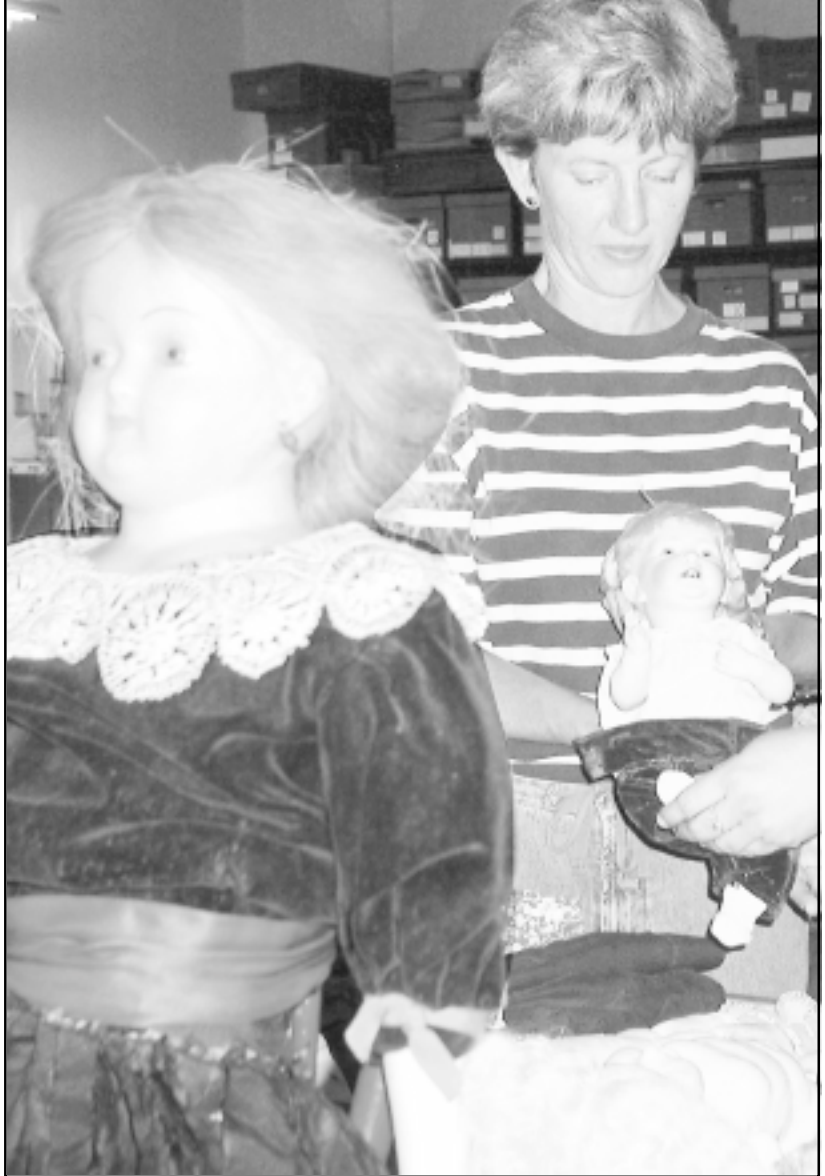
For more information contact the Prairie Museum of Art and History, 1905 S. Franklin, Colby. (785)672-4590 or check out the web site at prairiemuseum.org. Hours at the museum are 9-5 Monday - Friday and 1-5 Saturday and Sunday. During the summer the museum has extended hours and from November - March it is closed on Mondays.



The Toys Exhibit



The Train Exhibit



The Doll Exhibit

Your locally owned & operated "Everything Store."

Kevin & Cindi Kriss, Owners

Store Hours: M-F: 7:30-6:00; Sat: 8:00-5:00; Sun: 1:00-4:00

1235 S. Country Club Dr. • 462-7500

◆ Residential and Commercial Installation ◆ Vinyl & Steel Siding

◆ Foundation Experts ◆ Remodeling & Additions

◆ Concrete Replacement ◆ New Construction

Ron Hutfles • 785-462-7123

315 E. 4th • Colby, Kansas

COLONY PAINTS • STANLEY DOORS

LUMBER • BUILDING MATERIAL

MARVIN & ANDERSON WINDOWS

1760 W. 4th • Colby • 462-2181

400 N. Franklin • Colby

785-462-8342

1605 S. Range

Colby, Kansas

785-462-1300

1440 W. 4th Street

Colby, Kansas 67701

785-462-3923

FAX: 785-462-6881

1-800-395-3595

The Businessman's Choice

1985 S. Range

Colby, Kansas 67701

785-462-8201

FAX: 785-462-9672

1-888-987-3781

2225 S. Range • Colby

785-462-6565

1-800-876-6408

735 E. Hill Street • P.O. Box 442

Colby, Kansas 67701

785-462-6408

1080 S. RANGE

COLBY

785-462-3913

The Colby Free Press

155 W. 5th

Colby, KS

785-462-3963

Together... Making a Difference

240 W. 4th • Colby, KS

462-3321 • fmbcolby.com

Toll Free: 1-877-462-3321

S & B MOTELS, INC.

1925 S. Range • Colby, KS 67701

785-462-8691

FAX: 785-462-7732

1260 S. Country Club Colby

785-462-7571

ESTABLISHED 1947

Jim Wallin, Store Manager

910 South Range • Colby

462-3957

Good Food ... Good Feelings®

2215 S. Range • Colby, KS

• 785-462-6683 •

1195 S. Range • Colby

785-462-2000

1110 Golden • Colby, KS

JAMES R. COX

1-800-536-2883

BUS: 785-462-2883