

Classifieds

To place your classified ad, mail (155 W. Fifth), fax (785-462-7749), phone (785-462-3963), or stop by our office at 155 W. Fifth

Announcement

Heritage FCE Craft Fair Saturday, October 11, 9:00 a.m. - 4:00 p.m. Logan County 4-H Building. Benefit soup luncheon 11:30 a.m. In conjunction with the Kansas State Cornhusking Contest.
—10/8—10/10—

Help Wanted.

Colby Public Schools is accepting applications for two bus drivers. Positions are 3 - 4 hours per day, \$8.00/hr. A district application form may be picked up at the Administration Office, 210 S. Range Ave. For additional information contact Alan Wade at 460-5020. E.O.E.
—10/10—10/17—

Office manager for dental office. Monday-Thursday. Duties include scheduling appointments, filing insurance and accounts receivable. Good phone and computer skills required. Send resume to: P. O. Box 256, Oakley, KS 67748. Application deadline is October 25.
—10/10—10/20—

Part time housekeeping position. Need to be able to work some week-ends. Stop by 1950 S. Range Ave., to pick up an application or ask for executive housekeeper.
—10/8—10/10—

Join Avon free! Earn extra money for Christmas, set your own schedule. Limited time offer - call now. Bobbi Blackhart, Independent Sales representative, 785-465-9124, www.youravon.com/bblackhart
—10/8—10/10—

Parts person position available. Full time, salary with benefits, excellent working conditions. Send resume to: Colby Implement, P.O. Box 20, Colby, KS 67701.
—10/6—10/17—

Real estate licensing by classroom, correspondence, internet. Free information 1-800-627-5077. http://www/realstateprepschool.com
—9/29—10/22—

Thomas County Health Department is seeking a Registered Nurse to fill the position of Administrator. This is a full time position. Work involves planning, organizing, and directing the public health services, coordinating and networking with other organizations and services, developing and interpreting policies and procedures, and maintaining acceptable standards. Application may be picked up at 350 S. Range, Suite 2, Colby, or at the Thomas County Courthouse, 300 N. Court Ave., Colby. E.O.E. Applications will be accepted until October 13, 2003.
—9/18—10/10—

Apartment for Rent

Nice 1 bedroom studio. All utilities paid, free washer. Call 462-3285 or 443-3472.
—10/8—10/10—

Apartments for Rent

1 bedroom brick apartment. All utilities and cable paid, free laundry, patio. Call 462-3285 or 443-3472.
—10/8—10/10—

1 & 2 bedroom apartments, 2 bedroom house, 3 bedroom duplex. 462-6311/460-6156 Colby.
—10/6—tfn—

Two bedroom apartment. No pets, utilities plus cable paid. Also small one bedroom house. 785-462-3218.
—10/2—10/17—

Nice 2 bedroom apartment. Some utilities paid. Call 462-2331.
—12/6—tfn—

For Rent - Mobile Homes

2 bedroom, furnished, washer, dryer, A/C, water paid, nice location near park. 462-2126.
—8/11—tfn—

Houses for Rent

3 bedroom Atwood house. 1 1/2 bath, family room, garage, \$350, no pets. Call 785-626-3100.
—10/10—10/15—

Very nice two bedroom house. refrigerator and stove, most utilities paid, no pets. 462-2529.
—10/15 & 10/22—

Newly carpeted 2 bedroom home. Detached garage with large work area, fenced yard, gas burning fireplace. Call 462-3285 or 443-3472.
—10/8—10/10—

2 & 4 bedroom houses. Appliances, fireplace, carport. 462-6503.
—10/8—10/23—

House for Rent

3 bedrooms, central air, no pets, in Colby. 785-672-3420, 785-462-3939, 785-443-1969.
—8/28—tfn—

Storage for Rent

10'x20'. Four units now available. Call 462-6759.
—10/8—10/10—

Offices for Rent

Approximately 1,000 square feet, 3 offices, reception area, adequate parking. 462-2331.
—5/12—tfn—

Bulding for Rent

1,500 square foot shop with heat, bathroom, 16' overhead doors. 462-6692.
—10/6—10/13—

Misc. for Sale

Two locker beefs, 140 day corn fed, will deliver to locker. Dick Roesch 785-626-3400.
—10/9—10/13—

3,000 square feet of formica laminate. Some small and large pieces. 50 - 75% off on in stock only. PJ's Home Improvement Center. 785-899-6241.
—10/8—10/20—

2 year old oak bunk beds, all accessories included. Girls 20" bike. 462-9283.
—10/6—10/10—

Land for Sale

Rawlins County. 146 acres, irrigated, 4 miles East of McDonald on Highway 36. SW 1/4 18-3-35. 785-766-9756.
—8/27—tfn—

Pets / Supplies

Male Schipperke. 7 months old, first shots, housebroken. 462-2696.
—10/9—10/13—

Red male miniature Dachshund, 10 weeks old. 785-462-6749.
—10/6—10/15—

Recreational Vehicles

Snow bird special. 1993 31' Prowler. Bumper pull, queen bed, sleeps 6, A/C, awning. 785-462-8271.
—10/10—10/20—

2002 Harley Davidson Sportster Sport. 400 miles, extras, \$9,500. 785-628-8726.
—10/9—10/14—

Vehicles for Sale

1988 Ford Taurus wagon, good body and tires, new parts, cracked head, first \$100 takes it. 1989 Subaru, good condition, several new parts, well maintained, \$800. 785-462-2537.
—10/9—10/13—

1990 Dodge Ram 150, 4x4, flatbed, 73,000 actual miles. 785-672-3111.
—10/8—10/13—

1998 Ford Ranger XLT. 4 cylinder, automatic, air conditioning, short box, chrome wheels, call 785-462-2394.
—10/8—10/10—

1996 Nissan pickup with topper. High mileage, runs great, \$2,000 firm. 462-6248.
—10/8—10/10—

Vehicle for Sale

1997 Plymouth Voyager. 98k, excellent condition, garaged, \$5,000 O.B.O. 785-675-3569.
—10/2—10/10—

Wanted

Crop swathing and round baling. We have a 36 foot canvas swather and large round baler. 785-462-2288 Colby.
—10/1—10/31—

Unharvested milo and corn standing in the field to buy for swathing and baling. Also will do on shares. Colby 785-462-2288, cell 785-462-4231.
—10/1—11/3—

Garage Sales

8 Plymouth Dr. Saturday 8:00 a.m. - 2:00 p.m. A lovely dining set, table and chairs, more furniture, TV's, household items, clothing and many more treasures. Please stop by.
—10/9 & 10/10—

THREE FAMILY GARAGE SALE

SATURDAY OCT. 11

8:00AM - 2:00 PM

140 S. ADAMS
1/4 MI W OF COLBY
(FARM & RANCH AUCTION PAVILLION)

INFANT - 4YR CLOTHING,
WOMEN'S SIZE 6 CLOTHING,
CHILDREN & WOMENS SHOES,
WEDDING DRESSES,
FORMALS, CHILDRENS
BOOKS, TOYS, CHRISTMAS
ITEMS, BEDSPREADS, RALPH
LAUREN BEDDING, OFFICE
FURNITURE, NEW GIFT ITEMS,
MUCH MUCH MORE.

The City of COLBY HELP WANTED

The City of Colby is accepting applications for the position of Community Building Maintenance Worker I. Successful applicants will possess a high school diploma or G.E.D. Experience in building maintenance and floor work is desirable; plumbing and electrical experience also a plus. This position will require working some nights and weekends. Starting salary range of \$1,323 to \$1,388 per month, with a possible increase in 6 months. The City of Colby is an equal opportunity employer and provides full-time employees with health insurance, vacation, sick leave, retirement benefits, and life insurance. Applications may be picked up at the office of the City Manager, 585 N. Franklin, Colby, and must be returned to that office by noon on Thursday October 16, 2003.

960 ACRES THOMAS COUNTY LAND

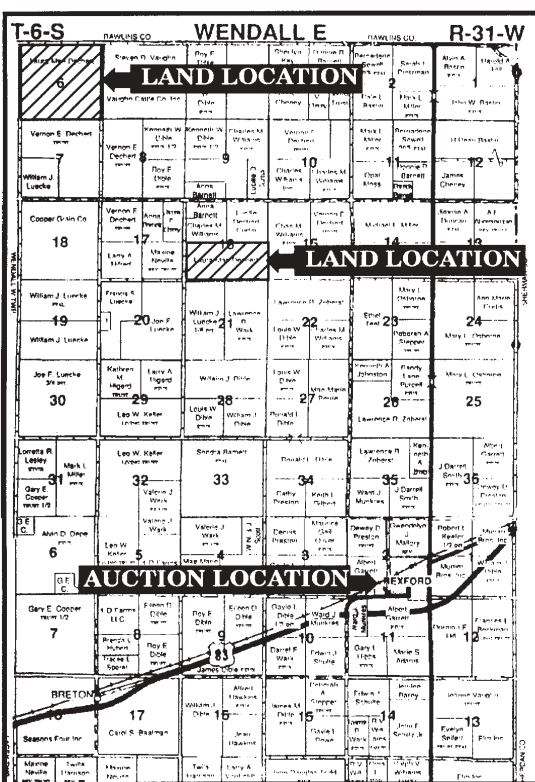
LAND AUCTION

Monday, Oct. 20, 2003 • 11 a.m.

Sale Location: Community Hall - Main Street - Rexford, Kansas

Seller: Laura Mae Dechert Estate

Land Location: Approximately 7 miles northwest of Rexford, Kansas



LEGAL DESCRIPTION

Tract 1: SE 1/4 of 16-6-31 Thomas County, Kansas. This tract has 163 acres planted to wheat. Buyer will receive 1/3 of the 2004 wheat harvest.
Tract 2: SW 1/4 of 16-6-31 Thomas County, Kansas. This tract has 163 acres of wheat stubble that has been sprayed in preparation for spring planting.
Tract 3: Combination of tracts 1 & 2 consisting of the S 1/2 of 16-6-31 Thomas County, Kansas.
Tract 4: SE 1/4 of 6-6-31 Thomas County, Kansas. This tract has 153 acres of wheat stubble that has been sprayed in preparation for spring planting.
Tract 5: SW 1/4 of 6-6-31 Thomas County, Kansas. This tract has 153 acres planted to wheat. Buyer will receive 1/3 of the 2004 wheat harvest.
Tract 6: Combination of Tracts 4 & 5 consisting of the S 1/2 of 6-6-31 Thomas County, Kansas.
Tract 7: N 1/2 of 6-6-31 Thomas County, Kansas. This tract has 48 acres planted to wheat, 119 acres of wheat stubble that has been sprayed in preparation for spring planting, and 113 acres of pasture land. Buyer will receive 1/3 of the 2004 wheat harvest.
Tract 8: Combination of tracts 4-5 & 7 consisting of All of Section 6-6-31 Thomas County, Kansas. Cropland acres: 470.05 with balance pasture land.

MANNER OF SALE: This real estate will be offered in individual tracts and then in combinations of tracts. It will be sold in the manner that produces the highest aggregate bid.

TERMS: Ten percent (10%) down day of sale, balance on approval of marketable title on or before 30 days from day of sale. Bidding is not contingent upon financing. Financing, if necessary, must have been arranged and approved prior to the auction so that Buyer(s) are capable of paying cash at closing. Seller will provide an owner's policy of title insurance in the amount of the purchase price, with the premium to be paid one-half by the Seller and one-half by the buyer(s).

TAXES: Seller will pay all 2003 and prior taxes with the taxes for 2004 and subsequent years to be the responsibility of the buyer(s).

MINERALS: All of seller's interests are believed to be intact and are going to the buyer(s).

POSSESSION: Immediate possession upon payment of down payment and signing of contract, except on the acres now plant to wheat. Buyer will receive possession on these acres after the 2004 wheat harvest.

FSA PAYMENTS: Buyer will receive 1/3 of the 2004 wheat payments and all of the 2004 feed grain payments.

ACREAGES: All acreages are based on U.S. Government measurements and are considered approximate. The statements, while not guaranteed, are from reliable sources. Any costs incurred in establishing boundaries shall be the responsibility of the buyer(s). Sale is subject to easements, rights-of-way, reservation and/or restrictions of record. Seller and Realtor make no warranties, either expressed or implied. Broker represents the Seller only and will not be considered an agent for the Purchaser(s). Announcements made day of sale shall take precedence over all p-rinted material. For more information, contact broker.

FSA & TAX INFORMATION

Tract No.	Cropland Acres	Wheat Bases	Wheat Yields	Grain Bases	Grain Yields	2002 Taxes
3	325.8	177.9	36	40.0	49	904.66
8	473.1	254.3	36	57.1	49	1503.10

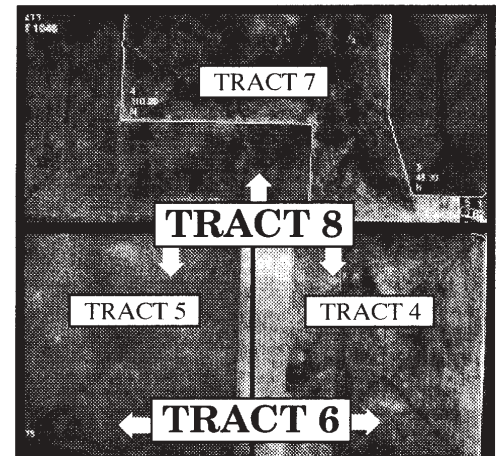
PRATT REAL ESTATE

IN CHARGE OF SALE: LES PRATT - Broker - Auctioneer

613 Main - Box 583 - Hoxie, KS 67740

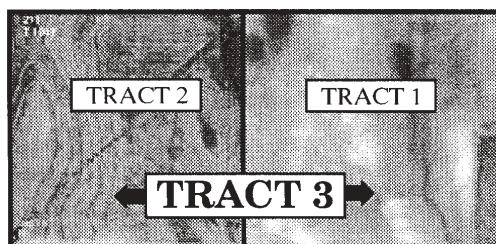
Ph: 785-675-3011 • Mobile 785-675-8531

E-mail: lpatt@ruraltel.net



06-06-31

Thomas County, Kansas



S 1/2 16-06-31

Thomas County, Kansas

PERSONAL ASSISTANT

Part-time hours - Oakley

We're looking for a reliable, caring individual to teach daily living skills and provide support to individuals with developmental disabilities in the home of a person served and in the community. Hours are variable, but will include some evenings, weekends and holidays. High School diploma or GED required. Related experience is helpful, but not necessary. Offering \$6.75/hr to start, \$7.00 after 90 successful days, training provided by an experienced staff and an opportunity to make a difference! To apply contact:

Human Resource Manager

DSNWK

P.O. Box 1016, Hays, KS 67601

(800) 637-2229

Equal Opportunity Employer

DSNWK - Work that makes a difference!

COME JOIN OUR TEAM!

Citizens Medical Center and Prairie Senior Living Center are looking for caring, qualified professionals to join our expanding Healthcare team. We have the following opportunities available:



CITIZENS MEDICAL CENTER

- Environmental Service Technician - Full-time
- Registered Nurse - Full-time
- Radiology Clerk - Full-time
- Certified or Registered Respiratory Therapist - Full-time
- PM Cook/Diet Aide - Part-time



PRAIRIE SENIOR LIVING COMPLEX

- Dietary Aide/Dishwasher - Part-time

We offer competitive wages and a benefits package that includes health and dental insurance with a portion of the premiums paid. If you want the opportunity for professional growth and the chance to make a difference in the lives of others, please contact: Human Resources, Citizen Medical Center, 100 E. College Dr., Colby, KS 67701. Or call our Employment Information Hotline at 785-462-1200. EOE

