



**newly Constructed Brick Home**  
420 Illinois, Brewster  
\$49,900



**Opportunity-Great Price**  
560 N. Chickamauga  
\$26,500



**Charming Cottage**  
665 N. Court  
\$29,500



**Single Bedroom**  
690 E. 7th  
\$30,900



**Duplex With Updates**  
235 N. Mission Ridge  
\$35,000



**Large 2 Bedroom**  
830 W. Plum  
\$35,000



**Multiple Apartments or Home**  
180 N. Range  
\$39,500



**Great Buy-2BR w/Space**  
480 Sherman  
\$41,900



**Home to Look at Me Today**  
795 W. Cedar  
\$45,500



**Newer Listing-Extras**  
350 E. 4th  
\$48,000



**Large 3BR - Large Lot**  
730 S. Mission Ridge  
\$48,500



**Educated 4BR, 2 Bath**  
1240 W. 5th  
\$56,000



**Like New 4BR, 2 Bath**  
755 S. Garfield  
\$57,900



**Extra Nice 3BR Home**  
255 E. Hill  
\$59,000



**Upper Buy 3-4BR, 2Bth**  
1111 Flint  
\$59,900



**Big Building Plus Home**  
260 S. Lincoln  
\$59,900



**Incredible Home**  
345 N. Cleveland  
\$61,500



**Very Sharp 3BR**  
175 E. Hill  
\$64,000



**Home to Look at Me-4BR**  
917 Court Terrace  
\$63,000



**Nice Inside & Outside**  
1011 Court Terrace  
\$72,500



**Nice 3BR Home**  
1710 Lynda  
\$75,500



**Personality & Charm**  
940 W. 2nd  
\$76,000



**Extra Sharp 3BR**  
1750 W. 6th  
\$78,500



**How-So-Much Home**  
570 N. Range  
\$78,500



**Kitchen is Newer & Sharp**  
635 W. 4th  
\$79,500



**Offer Wanted From You**  
1000 E. 9th  
\$81,500



**Large Lot & Spacious**  
1345 E. 8th  
\$83,900



**Fantastic Older Home**  
1065 W. 3rd  
\$86,500



**Location is Great**  
535 Austin  
\$89,900



**Losing Cost Help**  
375 W. 7th  
\$99,000



**Traditional Charm-2-Story Home**  
255 N. Garfield  
\$107,500



**Multi Unit Apartment**  
265 N. Mission Ridge  
\$115,000



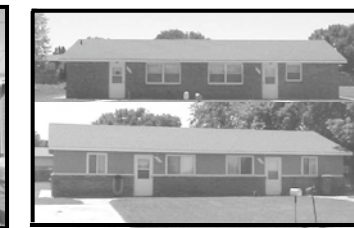
**You Will Love This Home**  
720 Nashville  
\$119,500



**New on Market-Perfect Home**  
1125 Maize  
\$123,500



**Granite & Marble Countertops**  
265 W. 6th  
\$129,500



**Investment Opportunity**  
1240 & 1250 E. 9th  
\$129,900



**Country Living Close to Town**  
1473 Pioneer Dr.  
\$130,000



**Edge of Colby Brick Home**  
1900 N. Range  
\$159,900



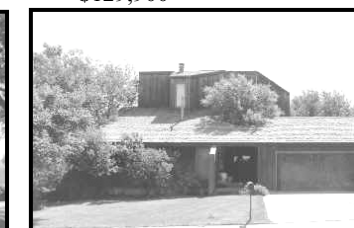
**Park-Like Setting**  
1380 E. 8th  
\$169,900



**Seller Wants Offer**  
335 La Hacienda  
\$174,900



**Wood Burning Fireplace**  
427 Smith Dr.  
\$175,000



**Contemporary 4BR Home**  
1165 Wheatridge  
\$199,000



**Perfect "Ten" Home**  
985 S. Range  
\$265,000



**Goodland Brick Home**  
1015 W. 35th, Goodland  
\$159,900



**Grinnell Charmer**  
102 Jefferson, Grinnell  
\$58,500



**Grinnell Brick Ranch**  
202 2nd, Grinnell  
\$78,000



**McDonald Lender Owned**  
408 Lincoln, McDonald  
\$29,900



**Oakley Lender Owned**  
423 Converse, Oakley  
\$34,900



**Winona 5BR Home**  
408 Wilson, Winona  
\$35,000



**Dream "Family" Home**  
1850 Harvey  
\$179,500



**Dry-Cleaning Business**  
175 W. 3rd  
\$50,000



**Investment Opportunity**  
1937 S. Range  
\$825,000



**Railer Park-9 Units**  
485 Walker  
\$85,000



**Apartment Complex-17 Units**  
1285 W. 2nd  
\$215,000



**Railer Park-21 Units**  
1360 1st Street Annex  
\$260,000



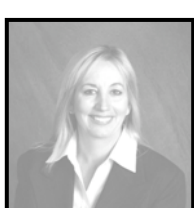
**Railer Park-5 Units**  
1280 W. 5th  
\$45,000

- ◆ Lots 7 & 8, Block 3, Pioneer Add. #2
- ◆ Lots 3 & 4, Block 2, Monterey Sub.
- ◆ Lot 1, Block 2, El Chaparral Add.
- ◆ Approx. 4.4 Acre Rural Lot South of Colby

- ◆ Saturday, February 11, 2006 – Residential Property Auction, Fullerton, NE
- ◆ Tuesday, February 14, 2006 – Late Model John Deere & New Holland Tractors & Hay Equipment Auction, Adams, NE
- ◆ Thursday, February 16, 2006 – Farm Machinery Retirement Auction, Conway Springs, KS
- ◆ Tuesday, February 21, 2006 – Farm Machinery Retirement Auction, Parks, NE
- ◆ Wednesday, February 22, 2006 – John Deere Dealer Close Out Unreserved Auction, Benkelman, NE
- ◆ Thursday, February 23, 2006 – Farm Machinery Estate Auction, Cambridge, NE
- ◆ Friday, February 24, 2006 – Pinkston Land Auction - 640 Acres Logan County, KS Dryland. Includes beautiful brick home, Oakley, KS
- ◆ Tuesday, February 28, 2006 – Fertilizer Equipment & Service Station Closeout Auction, Cedar Rapids, NE
- ◆ Wednesday, March 1, 2006 – Late Model John Deere Farm Machinery Auction, Brunswick, NE
- ◆ Thursday, March 2, 2006 – Farm Machinery Retirement Auction, Selby, NE
- ◆ Friday, March 3, 2006 – Farm Machinery Estate & Ret. Auction, Osceola, NE
- ◆ Tuesday, March 7, 2006 – Large 1-Owner Retirement Auction, Parks, NE
- ◆ Wednesday, March 8, 2006 – Colby Area Farmer's & Dealer's Auction, Colby, KS
- ◆ Friday, March 10, 2006 – Farm Machinery Estate & Ret. Auction, St. Edward, NE
- ◆ Thursday, March 16, 2006 – Pinkston Farm Machinery Auction, Oakley, KS
- ◆ Sunday, March 26, 2006 – Farm Machinery Collectables Estate Auction, Stanton, NE
- ◆ Thursday, March 30, 2006 – Farm Machinery Estate Auction, Clarkson, NE
- ◆ Sunday, April 2, 2006 – Saddle & Boot Equipment Collection Auction, Wolbach, NE
- ◆ Thursday, April 6, 2006 – Behlen Mfg. Spring Auction, Columbus, NE
- ◆ Sunday, April 9, 2006 – Farm Machinery, Shop Tools & Misc. Auction, Arnold, NE
- ◆ Saturday, April 22, 2006 – Antique Tractor Auction, Conway Springs, KS

- 400 Acres Dryland in 3 tracts located near Winona
- 143 Acres Dryland located north of Winona
- 160 Acres Dryland & CRP South of Monument
- 160 Acres Dryland & Grass Southeast of Atwood
- 300 Acres Dryland & Grass SE of Oakley
- 800 Acres Irrigated & CRP South of Brewster

- 640 Acres Dryland (Public Auction)
- 146 Acres Dryland at Page City
- 160 Acres Dryland North of Winona
- 160 Acres Dryland SW of Edson
- 266 Acres Creek-bottom S of Ludell
- 160 Acres Dryland & CRP S of Levant



**Molly J. Oliver**  
Residential Specialist  
462-6133 (Res)

**STOCK REALTY & AUCTION CO.**  
LAND BROKERS & AUCTIONEERS  
390 N. Franklin, Suite 100, Colby, KS 67701  
785-460-SOLD (7653);  
800-258-3318



**Rock L. Bedore**  
Ag/Commercial Specialist  
462-6930 (Res)