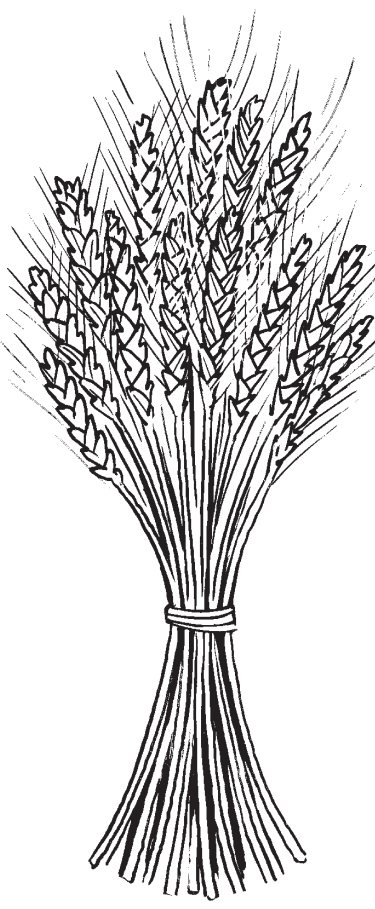




Shelbourne Reynolds General Manager Daniel Morris is assisted by Michael Hawkins, field support, adjusting stripping fingers on the header



British header offers relief during tougher years

By **Patty Decker**
Free Press Editor

For more than a decade, Shelbourne Reynolds, Inc., has been providing specialty headers to farmers in the Colby area and throughout the country. Its parent company and factory is located in Stanton, England, a community of about 6,000 with Colby being the headquarters in the United States, said Daniel Morris, general manager of the Colby operation.

Much of the success of Shelbourne has been in the harvesting of wheat, he said, since the stripper keeps the straw in place, it fits hand-in-hand with no-till farming practices.

With the straw left in the field, moisture is retained in the soil and wind has less damaging effects.

Farmers are also left with the option to cut the straw for bales.

Consequently, what started as disaster recovery in a hail damaged area, has turned into

more effective conservation.

Although a significant number of strippers are used on wheat, Morris said, it is not the top crop being cut with the header — rice is number one.

Business Development Manager Neil Smith, who is based in England, said the company began selling the specialty headers in 1993 in the Colby area after a hail storm had practically destroyed the wheat crop.

“The stripper header can be used to harvest hailed out crops better than a traditional header since it is lower to the ground and actually strips the grain from the stalk and leaves the straw intact,”

he said.

This year, Morris said, farmers yielding 20 bushels of wheat per acre with other headers, could increase yields to 30 to 40 bushels per acre in some cases with the Shelbourne header.

Although Morris said there are certain disadvantages about being located in Colby, such as the distance to an international airport, there is a higher importance placed on being at the doorstep of their customers.

“It is better for us to have to drive to Denver than for our customers to have to drive long distances to pick up a needed part,” he said.

Why select Colby as the main distribution facility?

Morris said the main reason was a partnership with Western Sunflower Company in the early 1990s.

The sunflower packing and distribution plant, which was located in Colby at the time, allowed Shelbourne to have containers shipped by railway into their facility and unloaded them in exchange for the empty containers to use to send out sunflowers.

The arrangement worked well for the two companies and allowed freight to be brought by

boat from England and then into Colby by train.

Now, since Western Sunflower no longer has a facility in Colby, the containers are mostly coming out of Houston, Texas.

There are anywhere between 2,000 and 3,000 strippers being used in the United States today and all parts and headers are sold through one of their 80 dealers or seven distributors.

Besides Colby, distributors are located in Kentucky, Arkansas, California, Washington and Canada, although the Colby location is the only one owned by the parent company.

Cersovsky Insurance

“Customer Service is our policy”

Cindy L. Cersovsky

370 N Franklin • P.O. Box 310
(785)462-7544



Good Food... Good Feelings®

OPEN: 6 a.m. - 11 p.m.
7 Days A Week
2215 S. Range • 460-6683

Financing Agriculture



FARM CREDIT
of Western Kansas

1055 S. Range Ave.
Colby, KS 67701
785-462-6714

JOHN C. TWEED AGENCY

“Your Multi-Peril Insurance Specialist”

135 W. 6th • Colby
785-462-7366

THANKS FOR ALL YOUR HARD WORK!



Member FDIC
100 Center Ave., Oakley
785-672-3251
1-800-444-1943

Taylor Motors

Knows Northwest Kansas Needs You!
THANKS!!

www.taylor-motors.com
800-834-2338

Thank You Wheat Producers!!



1940 W. 4th • P.O. Box 602
785-462-6441

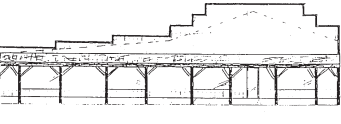
Thank you Wheat Producers!!

Your COLBY FREE PRESS

155 W 5th
Colby, KS
(785)462-3963

COLBY LUMBER

COLONY PAINTS • STANLEY DOORS
LUMBER • BUILDING MATERIAL
MARVIN & ANDERSON WINDOWS



1760 W. 4th • 462-2181

WOOFER CONSTRUCTION & IRRIGATION

1110 PLAINS AVE. - COLBY
462-7441

FARM BUREAU FINANCIAL SERVICES

David L. Browne, III
& Jennifer Van Eaton

550 N. Franklin Ave., Colby
(785) 462-3388

Registered Representative • EquiTrust Marketing Services, LLC
5400 University Avenue, west Des Moines, IA 50266, 877/860-2904



The Right Store, The Right Price!

1605 S. Range
Colby, Kansas
785-462-1300

SLAVENS FAMILY PRACTICE

Dr. Gary Slavens

New Location

1535 S. Range
North Side of Dillons.
460-8000

BUTCH'S BODY-SHOP

1110 Golden • Colby, KS
1-800-536-2883
BUS: 785-462-2883

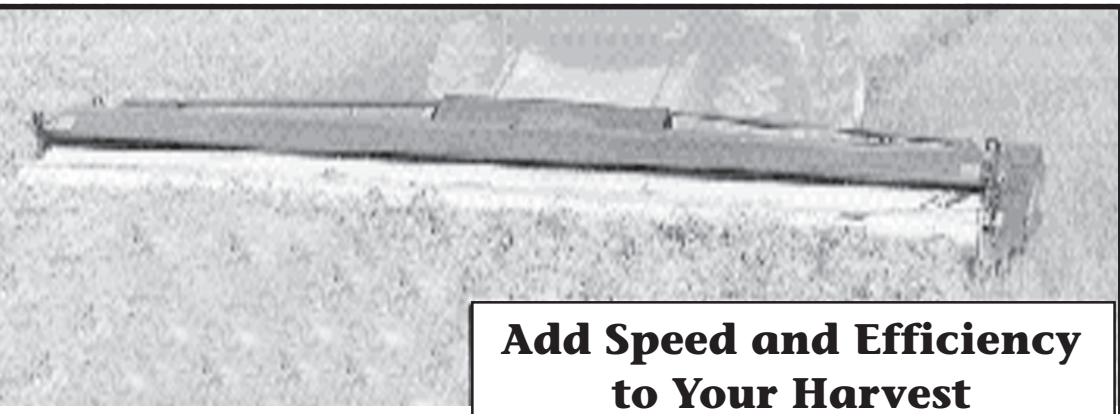
24-Hr. Wrecker
785-443-2552

You Are Appreciated!
Thanks Wheat Producers.



COLBY AG CENTER

1730 W. 4th • Colby • 462-6132



Add Speed and Efficiency to Your Harvest



Available up to 32' in width, the revolutionary Shelbourne Header features stainless steel stripping fingers for tougher harvesting conditions and a variable speed belt drive for on-the-go rotor speed adjustments using a cab-mounted switch. Shelbourne Headers harvest at up to twice the normal speed, use less fuel and create less wear on your combine. For information and customer support you can count on, call 888-895-0947.

P.O. Box 607 • Colby, KS 67701 USA • Ph. 785-462-6299
www.shelbourne.com • e-mail: shel-rey@st-tel.net

CORNERSTONE AG

Call Diana or Audrey for Farm bids.

- HRW, HWW, Corn, Milo and Soybeans

Visit us on the web at
www.cornerstone-ag.com

We appreciate your business!



“The Foundation For Your Farm Marketing”

Phone Numbers:

Terminal - 462-3354 • Elevator C - 462-3326
Elevator H - 462-7421