

# Classifieds

## Apartments for Rent

**South Park Apartments**  
**Meadowlark Manor**  
 - Rent based on income -  
**785-460-6763**  
 EQUAL HOUSING OPPORTUNITY

**Help Complete the Circle...**  
**Renew, Recycle, Reuse**



**Buy recycled products when you shop**

## Real Estate

**[MORTGAGE LOANS]**  
**LOAN, SWEET LOAN.**  
 At Bank of the West, we know every home-buying experience is unique. That's why our Home Mortgage Consultants offer a wide range of competitive financial solutions to help you get the right loan for the right home. Each and every time.

- Adjustable & fixed-rate mortgages
- Interest only & stated income loans
- Long-term rate locks
- Up to 100% financing
- Government loans, including Federal Housing Administration loans
- Low- and moderate-income solutions

**Call on us today.**

**Robert Dible Agency**  
 155 W. 4th, Colby  
 785-462-8020  
 Toll Free 800-658-4697

**Bank of the West**  
 www.bankofthewest.com  
 Subject to credit approval, other restrictions apply. MEMBER FDIC

**HOMES HOMES HOMES HOMES**

## Auction Notice

**Kansas Dept. of Transportation**  
**Notice of Real Estate PUBLIC AUCTION**  
 The Secretary of Transportation of the State of Kansas will offer for sale at public auction the following real estate:

**RADIO TOWER SITES**  
**Ness-Thomas-Graham-Phillips Co.**

**Tract KID-107-Ness Co.- 5 mi. S. Bazine**  
 W side Co Rd EE, S of 70 th Rd. NE/4 31-19s-21w ; 400'x 400' site, 300' tower, 10x12 portable bldg. 3.68 ac m/l  
 Bidding starts \$1,985.00 with tower or \$985.00 without tower.  
**SALE HELD AT SITE, 2:00 pm 12/12/06 Mail bids accepted before 5pm 12/7/06**

**Tract KID-157, Thomas Co.**  
 1.5 mi. N. Menlo, NW/4 12-8s-31w 4.56 ac m/l, 500' of frontage US-24.  
 Bidding starts \$3540.00 with tower, or \$3040.00 without tower.  
**SALE HELD AT SITE, 9:00 am 12/12/06 Mail bids accepted before 5pm 12/7/06**

**Tract KID-178, Graham Co.**  
 4 mi. N. jct US-24 & 18 near Bogue NW/4 21-7s-21w.  
 3.00 ac m/l, triangle shape, Co. road all 3 sides. Sold without tower only.  
 Bidding starts \$800.00  
**SALE HELD AT SITE, 4:30 pm 12/11/06 Mail bids accepted before 5 pm 12/7/06**

**Tract KID-121, Phillips Co.**  
 4 mi. S. Logan, NW/4 27-5s-20w NW corner Cozy Cove Rd. and 1300 Road. 1.11 ac m/l, 122' tower.  
 Bidding starts \$620.00 with tower or \$280.00 without tower.  
**SALE HELD AT SITE, 2:00 pm 12/11/06 Mail bids accepted before 5 pm 12/7/06**

\*Highest overall bid for each tract wins right to purchase that tract.  
 \*Inspection 30 min prior to sale.  
 \*Call for mail bid form.

Cashier's check for 10% of starting bid must be shown in order to bid in person and must accompany mail bids. Checks will be returned to unsuccessful mail bidders within 10 working days. Balance due 30 days. Sale subject to ingress/egress easements and sign covenant. Sold as is. Not responsible for accidents. The Kansas Department of Transportation insures the acceptance of any bid pursuant to this notice will be without discrimination on the grounds of sex, race, color, religion, physical handicap or national origin.  
 Please call for complete legal descriptions or further information:  
**KDOT Bureau of Right of Way**  
**1-877-461-6817**

## Real Estate

**FARM & RANCH REALTY, INC.**  
 1420 W. 4<sup>TH</sup>. - P.O. BOX 947  
 COLBY, KS 67701  
 785-462-3904  
**DONALD L. HAZLETT, Broker**

**VISIT OUR WEBSITE AT [www.farmandranchrealty.com](http://www.farmandranchrealty.com)**

**"WHEN YOU LIST WITH FARM & RANCH, IT'S AS GOOD AS SOLD!" DON HAZLETT, BROKER**

The agents & staff of Farm & Ranch Realty wish you a happy & safe "Thanksgiving Holiday"

**AUCTION - 12/12/06**  
**FARM MACHINERY & EQUIPMENT**  
 Tues., Dec 12, 2006 @10:30 A.M., MST  
 Auction Location: Idalia, CO  
 Sellers: Devern & Elmer Pinckard

**TRACTORS:** •'04 Case IH MX285 MFWD 1,567 hrs  
 •'96 Case IH 9390 4WD, 3,180 hrs  
 •'93 JD 4560 MFWD, 4,733 hrs  
**TRAILERS:** •18' Diamond GN trailer•'91 Wells Cargo 16'x102" box trailer•'98 tandem axle 24' GN  
**FARM MACHINERY & EQUIPMENT:**  
 •'04 JD 1910 commodity cart, & '04 JD 1890 42' no-till single disc air drill, 7,500 acres  
 •'01 JD 1900 commodity cart, & '01 JD 1810 60' air seeder hoe drill, approx. 15,000 acres  
 •Sunflower 6054- 62 field cultivator  
 •Bourgault 9400-54 chisel  
 •Ashland I-175 Earthmover•Wilrich 60' chisel •Kent Series V field cultivator•Case IH Cyclo 900 8-row planter  
**SPRAYER & FERTILIZER EQUIPMENT:**  
 •Great Plains 90'(convertible to 60') sprayer w/1,000 gal tank•Ace Roto-maid 1,300 gal tank w/induction tank & 2 Sotera digital meters (1 NEW)  
**AND MANY MORE ITEMS TOO NUMEROUS TO LIST!!**

**AUCTION - 12/14/06**  
**FARM MACHINERY & EQUIPMENT**  
 Thur., Dec 14, 2006 @ 10:30 A.M., MST  
 Auction Location: Goodland, KS  
 Seller: Bill Cole

**TRACTORS:** •'86 Versatile 936 4WD  
 •'79 JD 4430 w/ loader  
**COMBINES & HEADERS:**  
 •2) '94 Case IH 1688's-2) '99 Case 1010-30 headers w/trls •'99 JD 1293 corn head  
**TRUCK & PICKUPS:** •'77 IHC truck, 400 Cummins 13spd•'91 Ford 1T pu w/45' RHS Sprayer 45'•'83 GMC diesel 1500 pu •'76 1T Chevy dually  
**GRAIN CART:** • Kinze 800  
**FARM MACHINERY & EQUIPMENT:**• FK KM 7x6 blade plow• FK RD48 rod• Krause 2460 32' disc  
 •Graber 32' chisel •Orthman 13 shank subsoiler w/NH3• JD 9400 30' grain drill & MORE!

**WATCH FOR ADDITIONAL CONSIGNMENTS**

**AUCTION - 2/13/07**  
**FARM MACHINERY & EQUIPMENT**  
 Tues., Feb. 13, 2007 @ 10:30 A.M., MST  
 Auction Location: Sharon Springs, KS  
 Seller: Howard C. Wilson Trust

## REAL ESTATE FOR SALE

**THOMAS COUNTY** - 160 ac irrigated cropland NE of Levant - immediate possession - JUST LISTED!!  
**RAWLINS** - 160 ac irrigated cropland NW of Levant - immediate possession - JUST LISTED!!  
**SHERMAN COUNTY** -160 ac irrigated cropland NE of Edson - JUST LISTED!!  
**LOGAN COUNTY:**  
 •80 ac cropland S of Monument, immediate possession- JUST LISTED!!  
 •320 ac SW of Winona - 182.7 cropland acres & 133.5 grassland acres - E/2 of 22-12-36  
**WALLACE COUNTY** - 18 ac w/ 5 BR home located South of Wallace- JUST LISTED!!



985 Donelan \$98,500

**CALL NAOMI TO "LOOK" OR "LIST" - 462-3904**

- 1804 Harvey Ct •790 W. 5<sup>th</sup>
- 796 CR O •Cherry St Lot
- Approx 115' X 200' Commercial Lot for sale on Range Ave -S of Kansas Quick Lube!



1760 Harvey Ave \$89,900

**TIME TO BE THANKFUL**  
 Now is the time to reflect on the past year and appreciate all that we have in our lives.  
**As Thanksgiving time is here, we at Farmers & Merchants Bank would like to extend our thanks to our customer for their continued support.**  
 Stop by and see if we can help you pre-qualify for that new house you've had your eye on. We have many different financing options available.

**FARMERS & MERCHANTS BANK OF COLBY**  
 240 W. 4th, Colby, KS  
 785-460-3321  
 1-866-460-3321

**Jacque Goleboski**  
 Mortgage Lender  
 MEMBER FDIC EQUAL HOUSING LENDER

## NOTICE

**AD RATES**  
 For Classified Word ads are as follows:

1-2 days	25¢* /word
3-4 days	18¢ /word
5-9 days	17¢ /word
10-14 days	16¢ /word
Monthly (tfn)	15¢ /word

\*Price reflects 15 word minimum ad. Ads must be in our office by 12:00 noon the day before. In case of error, call us the FIRST day your ad runs since we will not be responsible for errors after the first day/week.

**COUNTRY ADVOCATE**  
 \$9.45 for the first 15 words & 55¢ each additional word (per week).  
 Your ad will run 1 time in the Advocate and 1 week in the sister paper of your choice.  
**ADS MUST BE IN THE OFFICE BY 12:00 NOON ON FRIDAY.**  
**DISPLAY (box) AD DEADLINE FOR FREE PRESS IS 3:00 P.M. TWO DAYS BEFORE**  
**AD RUNS. Display Rate: \$7.15 per column inch. COUNTRY ADVOCATE DEADLINE IS 12:00 NOON ON FRIDAY.**

**COLBY FREE PRESS 462-3963**

## Public Notice

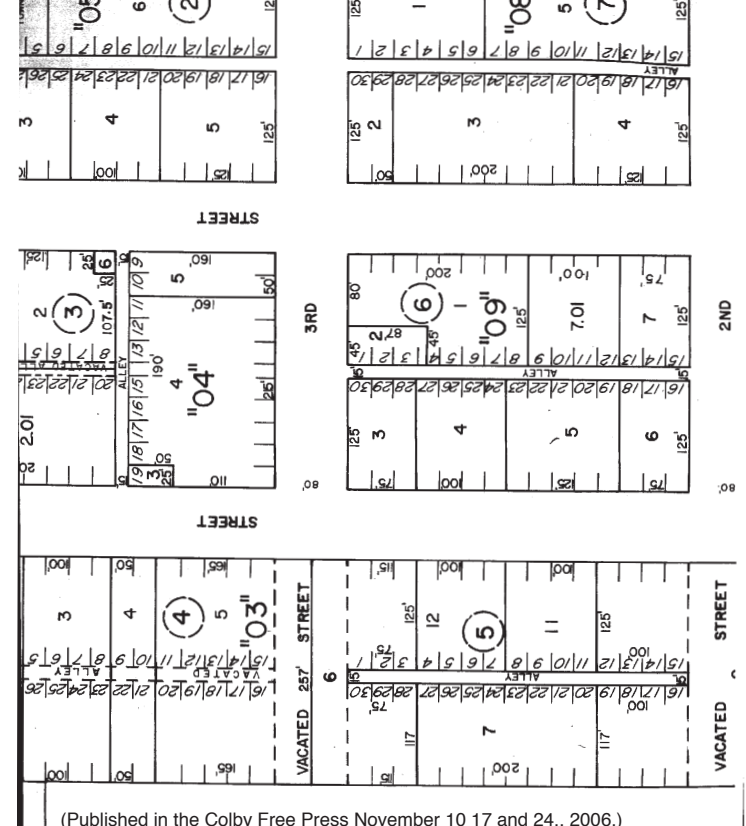
Notice is hereby given a petition has been filed with the Thomas County Board of Commissioners by Darrell Pabst of Colby, Kansas, praying for the vacation of the alley located between Lots 1-3, 28-30 & S2 of Adj. Vacated St., Block 5 in the platted Townsite of Levant, Kansas.

Notice is hereby given that a public hearing shall be held on the 30<sup>th</sup> day of November, 2006 at 9:00 a.m. in the County Commissioners Room of the County Courthouse, at which time the Board of County Commissioners may approve or disapprove the petition for the vacating of said alley.

Dated this 7<sup>th</sup> day of November 2006.

*Shelly A. Harms*  
 Shelly A. Harms, County Clerk

Board of County Commissioners  
 Ronald G. Evans, Chairman  
 Paul M. Steele, Member  
 Ken Christiansen, Member



## Public Notice

**This Thanksgiving, we would like to wish everyone a safe and happy holiday and hope you enjoy valued time with family and friends. We would also like to thank our customers and clients for all of your business and support.**

**Our office will be closed Thursday, Nov. 23<sup>rd</sup> and Friday, Nov. 24<sup>th</sup> to celebrate the holiday with our families. We will be back in the office on Monday, November 27<sup>th</sup> to serve all your real estate needs.**

Please visit our website at [www.stockrealtyandauction.com](http://www.stockrealtyandauction.com) to view the listings we have available.

**Stock Realty & Auction Co.**  
 Colby, KS Branch

**390 N. Franklin, Suite 100**  
**Colby, KS 67701**  
**785-460-SOLD (7653)**  
**Fax: 785-460-7658**  
**Toll Free: 800-258-3318**

**Rock L. Bedore**  
 Ag/Comm. Specialist  
 Res: 785-462-6930

**Molly J. Oliver**  
 Residential Specialist  
 Res: 785-462-6133

**The 900 pound Gorilla is waiting to work for you!**



He works for you in **The Country Advocate**. He is biggest and most effective advertising medium in the Tri-State Region.

**Call today at 462-3963.**