

# Classifieds

To place your classified ad, mail (155 W. Fifth), fax (785-462-7749), phone (785-462-3963), or stop by our office at 155 W. Fifth

## Help Wanted

**Full time openings** at Quality Inn in housekeeping at Quality Inn, 1950 S. Range. Good starting pay and some benefits. Please apply in person.

-----5/21---TFN-----

**CHS, Inc.: Colby Agronomy Center** is looking for seasonal help at the Colby and Selden locations. Must have CDL. Contact Alvin Juenemann, 462-6880.

-----4/23---TFN-----

**Oasis Travel Center** is accepting applications for Convenience Store, Quiznos, Chester Fried Chicken, Baskin Robbins, maintenance, and Starbucks. Please pick up an application at 700 Horton Ave., Colby, 785-460-0044.

-----7/31---TFN-----

## Apartments for Rent

**2 bedroom apartment**, washer/dryer hookup, dishwasher, no smoking, no pets. Nice! Sandstone Apartments, 460-6807.

-----6/18---TFN-----

## Houses for Rent

**2 bedroom house** with family room and utility in basement. \$450/mo. Call 785-460-5825 or 706-244-1053

-----7/9---7/14-----

## Mobile Home for Rent

**Nice 3 bedroom trailer** 2 bath, appliances included, no pets or smoking. Call 460-2779

-----7/2---7/9-----

## Houses for Sale

**4-plus bedroom**, 2.5 bath house, big yard, corner lot, beside small park, about 2,500 square feet, central air, all on one level, ready to move into. \$87,500. Open house 10-3, Saturday; 2-5 Sunday, 965 E. Ninth St., Colby. 785-460-7038

-----6/25---7/9-----

**3 bedrooms, 2 baths**, full basement, quiet neighborhood, big fenced yard, 1111 Flint \$62,500. Call to see, 785-586-2216 or 785-269-7284.

-----6/25---7/9-----

## Land for Sale

**Salida, Colorado's Little River Ranch** offers beautiful mountain and river-front home-sites from \$76,500. coloradohomeproperties.com Call Kevin at 719-207-0858, Land Properties, Inc.

-----7/9---8/4-----

## Mobile Home for Sale

**1998 Schult** 16x80, 3 BR/2 bath, 2x6 walls, new flooring, paint, appliances. Must be moved. 785-626-9295.

-----7/7---7/11-----

## Misc. for Sale

**Leather love seat**, new (burgundy). Executive desk 60"x30" like new. Authentic Duncan Phyfe Dining table with leaves and protector pads extends to 96 inches, seats 12. Custom hand made portable bar, made from French Wine Barrel. Corona electric portable typewriter with case & extra cartridge. Shown by appointment. 443-2473.

-----7/9---7/14-----

**Moving sale:** Hotpoint washer/dryer pair, Hotpoint 4 burner electric range, Whirlpool refrigerator, 19 cu. ft., Whirlpool deep freezer 7 or 9 cu. ft. To see, call Richard or Carol at 785-460-5866 or see at 980 W. 3rd, Colby, KS.

-----7/9---7/21-----

**Large oak** entertainment center with glass display case. Call 465-7445 or 443-2437.

-----7/9---7/10-----

**2007 Harley Davidson Super-glide.** 2000 miles, 96 CI, 6 speed, \$11,000 OBO. Call 785-386-8127 or 386-4531.

-----7/9---7/21-----

**Old wood Montgomery** Wards Icebox (good), old wood BR Dresser with bevel edge, oval mirror (good), old cane rocker (seat brake). Original finishes. Reasonable offer. Can deliver. Leave message, 785-462-2087.

-----7/9---7/21-----

**2007 Harley Davidson Super-glide.** 2000 miles, 96 CI, 6 speed, \$11,000 OBO. Call 785-386-8127 or 386-4531.

-----7/9---7/21-----

## Misc. for Sale

**Fimco Spot Sprayer.** 25 gal. Model #LG-25-DM, 12 volt, brand new. 785-675-3193.

-----7/7---7/11-----

**Motor Home!** Comfy camping, 1978 Dodge with Ford Chassis. Clean and well taken care of with a 460 motor, runs great. Sleeps 4-6 with space for TV, bathroom, cooktop, fridge and shag carpet from top to bottom, very 80's cute inside. Needs waterpump for sink. Will send pictures, need to sell-lost job. \$2,400, 785-332-8949 or amystic1@hotmail.com

-----7/3---7/17-----

**Baby Grand Piano.** Great condition, 18,000 O.B.O. Heartland Christian School. 785-460-6419.

-----7/3---7/10-----

**2 Window Air Conditioners** for sale. 18,000 BTU, 220 volt, A.C.'s Both work, \$150 each. Call 460-6507, evenings.

-----7/3---7/10-----

**5th Wheel Camper** 1997 Signature by Thor 36' 3 slides, 3 axels, new tires. Call Harvey Wright, Atwood, KS. 785-626-3315

-----7/2---7/16-----

**1996 Jayco** pull type camper, 33 ft. tip out, loaded, like new. \$9,600, Dighton. 785-418-6152.

-----7/2---7/9-----

**Moving Sale.** Baldwin Piano, Nordic Track, king headboard w/ frame, 9-drawer dresser w/ mirror, nightstand, Sony 48" TV, Toshiba 32" flat screen TV. 785-443-2452 or 785-443-0458.

-----7/2---7/9-----

**Bowflex Power Pro** with leg extension, instruction manual, fitness guide, video. New condition, half-price. 719-346-5624.

-----6/30---7/21-----

**Lean Ground Beef.** All Natural USDA Inspected. \$3.00 per pound. 20, 50, and 100 bundles. Also whole steer for sale. All Natural no hormones or drugs. Grass fed 900-1000 pounds. Call 785-672-4545.

-----6/26---7/10-----

## Lost & Found

**Found: Solar Spot Sprayer** on N. Country Club on Friday, July 4th. Call to identify.

-----7/9---7/14-----

## Public Notices

## Lost & Found

**Found a set of keys** on the curb between Colby Free Press and S&W Supply. Has 5 keys on it. Claim at the Colby Free Press, 155 W. 5th.

-----7/9---7/14-----

## Wanted

**Someone to custom harvest** 320 acres of wheat with a Shelborne stripper header, 17 miles north of Colby along Highway 25. Carry Holste, 785-626-4161 cell, or 785-626-3223 home.

-----5/14---7-19-----

## Vehicles for Sale

**2001 Ford Super Crew**, 4dr, 4x4, keyless, topper, 88k, 5.4 \$11,950 OBO. 785-460-9791, 785-443-2291.

-----7/9---7/14-----

**1988 Chevy Astro.** Asking \$1,200. 785-846-7416 or 846-8036.

-----7/9---7/14-----

**1988 Olds Cutlass** recently overhauled engine. \$300. Call 785-475-3308.

-----7/7---7/11-----

**2000 Ford Expedition.** Eddie Bauer, leather, 3rd seat, 96K, asking \$10,500. Call 443-3637.

-----7/7---7/11-----

**1983 Buick.** New transmission, new gas tank, new carb., 30,000 miles on engine. 785-460-5817. \$995

-----7/2---7/9-----

**1996 Freightliner 60 series** Detroit, \$12,500. 9N Ford tractor with 5ft Bush Hog mower, \$3,750. 1970 Ford 1 ton dually \$850.00. 1984 1 ton dually \$850.00. Both are flat beds. 17ft boat \$2,195. 1982 Beachcraft motorhome 49k \$5,200. 785-673-9475.

-----6/30---7/14-----

## Services

**All Lines Insurance.** Brooke Insurance Agent, 390 E. 4th, Colby, KS 67701. 620-271-1227 or 785-462-8700.

-----7/9---9/29-----

## Public Notices

## Services

**Dave's Refurbishing tree**, handy-man service; trees, shrubs, pruning, cleaning property interior and exterior, house maintenance. 785-443-0994.

-----7/9---7/14-----

**Need a Handyman?** Minor plumbing, electrical, remodel, painting, int/ext. Call Stan Gallagher 785-672-3677.

-----6/26---7/10-----

**Backhoe Service** Call for any underground leak repairs or replacements. Insured for your protection. Agricultural, oil-field, commercial, residential. Other light and heavy duty equipment available. Call 785-673-3100.

-----6/20---7/17-----

**Daycare** Country Kids Daycare has openings. Contact Kristina Deges for details. 462-7384.

-----5/14---7/19-----

**Tired of Leaks** every time it rains? Murray Roofing and Construction. 1-800-794-3204 or 443-1339.

-----5/2---TFN-----

**Free Estimate** Flat and sloped roofs, all kinds. Murray Roofing and Construction. 1-800-794-3204 or 443-1339.

-----5/2---TFN-----

**Free Estimate** Automatic, computerized, underground sprinkler system. 1-800-794-3204 or 443-1339.

-----5/2---TFN-----

**Free Estimate** Lawn power rake, aerate and edge program. JM Tree and Lawn Service. 1-800-794-3204 or 443-1339.

-----5/2---TFN-----

**Free Estimate** Lawn fertilizer and weed control program. JM Tree and Lawn Service. 1-800-794-3204 or 443-1339.

-----5/2---TFN-----

**Free Estimate** Tree spraying promotes healthy trees! JM Tree and Lawn Service. 1-800-794-3204 or 443-1339.

-----5/2---TFN-----

## Services

**Free Estimate** Landscaping, tree trimming and removal. JM Tree and Lawn Service. 1-800-794-3204 or 443-1339.

-----5/2---TFN-----

**Up to 80% savings** possible on many medications. Generics now available for Celebrex, Lipitor, Nexium, Plavix, Singulair, and all ED meds. Canada Drug Topeka, 1-866-804-6100.

-----G 4/26---TFN-----

## Garage Sales

**190 W. 3rd Street.** Saturday, July 12th 8 a.m. to 1 p.m. Chaise lounge, matching loveseat/chair/ottoman, solid oat entertainment center, tanning bed, armoire, lateral file, cell phones, shelves, CCC shirts, clothes, prom dresses & misc.

-----7/9-7/11-----

**995 E. 6th, Colby.** Friday 2:00 thru Saturday, July 11-12. Household, tools, games, fur coat, other.

-----7/9-7/10-----

**620 N. Range.** Fri. 4-7, Sat. 8-2. 3 families. Furniture, baby items, books, clothes, misc., tons of fabric.

-----7/9-7/11-----

**Multi-family.** 900 block East 8th St. Friday 9-dark; Saturday 9-12. 965 E. 8th. Antiques, child's dresser and china hutch, furniture, shotgun re-loader, AA hulls, clothes, bird cages, pet carriers, dishes, lots of misc.

-----7/9-7/11-----

**1040 Wheatridge.** Multi-family. Friday: 4-7 and Saturday: 9-12.

-----7/9-7/11-----

**Saturday, July 12th** 8-12 noon, 520 E. Hill. Clothes, MK Summer Sale, Crafts & other fun stuff.

-----7/7-7/11-----



## Public Notices

## Public Notice

Notice is hereby given that Byron Sowers of Colby, Kansas, has filed a petition with the Thomas County Board of Commissioners praying for the vacation of a road beginning at County Rd K between section 7-9-31 and 12-9-32 extending north and terminating at County Rd L, this being a portion of County Rd 31.

Notice is hereby given that a public hearing shall be held on the 31<sup>st</sup> day of July, 2008 at 9:00 a.m. in the County Commissioners Room of the County Courthouse, at which time the Board of County Commissioners may approve or disapprove the petition for the vacating of said road.

Dated this 7<sup>th</sup> day of July 2008.

*Shelly A. Harms*  
Shelly A. Harms, County Clerk



Board of County Commissioners  
Ken Christiansen, Chairman  
Paul M. Steele, Member  
Byron Sowers, Member



(Published in the Colby Free Press July 9, and 16, 2008.)

Notice is hereby given that Keith Baalman of Colby, Kansas, has filed a petition with the Thomas County Board of Commissioners praying for the vacation of a road located in the northeast corner of Section 13-07-32, thence southerly to the north right-of-way boundary of the Kyle Railroad.

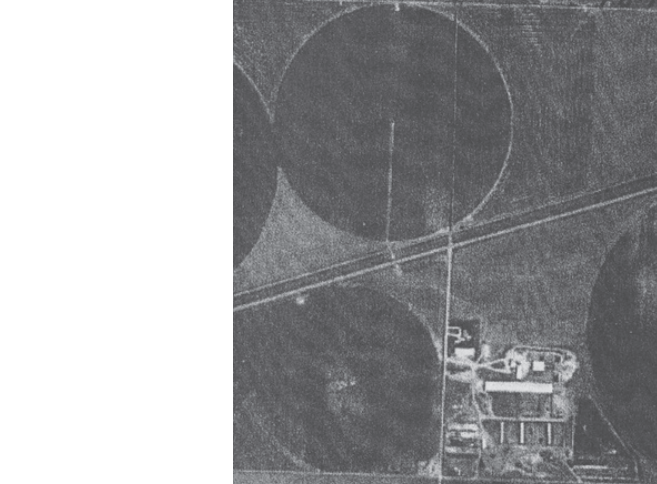
Notice is hereby given that a public hearing shall be held on the 31<sup>st</sup> day of July, 2008 at 9:00 a.m. in the County Commissioner Room of the County Courthouse, at which time the Board of County Commissioners may approve or disapprove the petition for the vacating of said road.

Dated this 7<sup>th</sup> day of July, 2008

*Shelly A. Harms*  
Shelly A. Harms, County Clerk



Board of County Commissioners  
Ken Christiansen, Chairman  
Paul M. Steele, Member  
Byron Sowers, Member



(Published in the Colby Free Press July 9 and 16, 2008.)

## Public Notices

### NOTICE OF PRIMARY ELECTION

Tuesday, August 5, 2008

STATE OF KANSAS, THOMAS COUNTY, ss  
Office of the County Clerk, Colby, KS

As required by K.S.A. 25-209, notice is hereby given there will be a Primary Election held in Thomas County, Kansas, August 5, 2008.

The candidates for members of the National Offices, State Offices and District if composed of more than one County, have been approved by the State Board of Canvassers and certified to this office by the Secretary of State, the names of candidates being arranged in the manner in which they will appear on the Official Ballot in Thomas County, Kansas.

The candidates for County Offices and Township Offices have filed declaration papers in the office of the County Clerk and being found regular are entitled to have their names on the Official Primary Ballot of Thomas County, Kansas subject to the rotation of names pursuant to law governing the same. The names of the candidates for National, State and District offices are shown and arranged, as they must appear on all the printed ballots of the County.

### ADVANCE VOTING BY MAIL AND/OR IN PERSON

Advanced voting by mail or in person shall begin on Wednesday, July 16, 2008 at the Thomas County Courthouse, 300 N. Court Ave., Colby, KS from 8:00 a.m. to 5:00 p.m. Extended in person voting will be July 28 – August 1, 2008 at the Thomas County Courthouse from 8:00 a.m. to 7:00 p.m. Please contact the Thomas County Clerk's office at 785.460.4500 or e-mail at [tccl01@st-tel.net](mailto:tccl01@st-tel.net) to request an application and ballot.

### VOTING HOURS AND VOTING PLACES

The voting hours will be from 7:00 a.m. until 7:00 p.m.

The voting places are as follows: Ward #1, #2, #3, #4, Morgan, Summers, Rovohl, South Randall, and North Randall – **Colby Community Building**; Brewster City, Barrett Township, East/West Hale Township, and Kingery Township – **Brewster City Hall**; Rexford City, Menlo City, Gem City, Oakley/Schwaller, Wendell Township, Lacey Township, Smith Township and Menlo Township – **Golden Plains U.S.D. #316**.

### NATIONAL TICKET – DEMOCRATIC

**U.S. SENATE** – Lee Jones, Overland Park – Jim Slattery, Topeka: **U.S. REPRESENTATIVE 1<sup>ST</sup> DISTRICT** – James Bordonaro, Emporia: **STATE TICKET: KANSAS SENATE 40<sup>th</sup> DISTRICT** – No filings: **STATE REPRESENTATIVE 121<sup>ST</sup> DISTRICT** – No filings: **DISTRICT MAGISTRATE JUDGE** – No filings: **15<sup>TH</sup> JUDICIAL DISTRICT JUDGE DIVISION 1** – No filings: **15<sup>TH</sup> JUDICIAL DISTRICT JUDGE DIVISION 2** – No filings: **COUNTY TICKET: COMMISSIONER DISTRICT #2** – No filings: **COMMISSIONER DISTRICT #3** – No filings: **REGISTER OF DEEDS** – No filings: **COUNTY ATTORNEY** – No filings: **COUNTY CLERK** – No filings: **COUNTY SHERIFF** - No filings: **COUNTY TREASURER** – Donita Applebury, Colby: **TOWNSHIP BOARD** - No filings: **PARTY OFFICE – PRECINCT COMMITTEEPERSON** – No filings

### NATIONAL TICKET – REPUBLICAN

**U.S. SENATE** – Pat Roberts, Dodge City: **U.S. REPRESENTATIVE 1<sup>ST</sup> DISTRICT** – Jerry Moran, Hays: **STATE TICKET: KANSAS SENATE 40<sup>th</sup> DISTRICT** – Ralph Ostmyer, Grinnell: **STATE REPRESENTATIVE 121<sup>ST</sup> DISTRICT** – Jim Morrison, Colby: **DISTRICT MAGISTRATE JUDGE** – Richard J. "Rick" Ress, Colby: **15<sup>TH</sup> JUDICIAL DISTRICT JUDGE DIVISION 1** – Glenn D. Schiffler, Colby: **15<sup>TH</sup> JUDICIAL DISTRICT JUDGE DIVISION 2** – Kevin N. Berens, Goodland; Scott Showalter, Goodland; Andrea Wyrick, Colby: **COUNTY TICKET: COMMISSIONER DISTRICT #2** – Paul M. Steele, Colby: **COMMISSIONER DISTRICT #3** – Ken Christiansen, Brewster, **REGISTER OF DEEDS** – Maybelle F. Moore, Colby: **COUNTY ATTORNEY** – Bruce Flipse, Colby; Preston A. Pratt, Oberlin: **COUNTY CLERK** – Shelly A. Harms, Colby: **COUNTY SHERIFF** - Mike Baughn, Brewster; Cloyde D. Hopper, Colby; Rod (Rodney) Taylor, Colby: **COUNTY TREASURER** – No filings: **TOWNSHIP BOARD** - Lacey Treasurer – Vernon Roemer, Gem; Lacey Trustee – No filings; North Randall Treasurer – No filings; North Randall Trustee – Lonnie D. Wilson, Colby; South Randall Treasurer – No filings; South Randall Trustee – James G. Fellhoelter, Oakley; Summers Treasurer – Bert J. Stramel, Colby; Summers Trustee – Craig Reed, Monument; Menlo Treasurer - Susan D. Guill, Menlo; Menlo Trustee – No filings; Morgan Treasurer – John C. Kern, Colby; Morgan Trustee – Ron Haremza, Colby; Wendell Treasurer/Trustee – No filings; Barrett Treasurer/Trustee – No filings; East Hale Treasurer/Trustee – No filings; West Hale Treasurer/Trustee – No filings; Kingery Treasurer/Trustee – No filings; Rovohl Treasurer/Trustee – No filings; Smith Treasurer/Trustee – No filings; **PARTY OFFICE – PRECINCT COMMITTEEPERSON – Ward I** – Kathy Myers, Colby; Stephen W. Myers, Colby: **Ward II** - Judy R. Kistler, Colby; Joshua Faber, Colby: **Ward III** – Jeanene B. Brown, Colby; Mike W. Brown, Colby: **Ward IV** - Jerrilee Shuman, Colby; Paul M. Steele, Colby: **Barrett** – No filings: **East Hale** – Jesse Vincent, Levant: **East Morgan** – Tamara Ziegelmeier, Colby; Steve Ziegelmeier, Colby: **Lacey** – Margaret E. Flanagan, Gem; John D. Flanagan, Gem: **Kingery** – No filings: **Menlo** – Susan Guill, Menlo; Loren E. Guill, Menlo: **North Randall** – Lori A. Wilson, Colby; Lonnie D. Wilson, Colby: **South Randall** – Ruth Clark, Oakley; Robert M. Renner, Oakley: **Rovohl** – No filings: **Smith** – Jacqueline, Colby; Curtis G. Stephens, Colby: **Summers** – Melissa L. Regier, Monument; Randall L. Regier, Monument: **Wendell** – Kelly R. Riccitelli, Gem; Robert M. Riccitelli, Gem: **West Hale** – Brenda Claassen, Brewster; Mike Baughn, Brewster: **West Morgan** – Lisa Schroeder, Colby, D. Kriss Schroeder, Colby

*Shelly A. Harms*  
Shelly A. Harms  
County Clerk/County Election Officer

(Publish in the Colby Free Press July 9, 16 and 23, 2008)