

Weather Corner



National Weather Service

Tonight: A chance of snow before 1 a.m. Cloudy, with a low around 28. Blustery, with a north wind between 10 and 20 mph, with gusts as high as 30 mph. Chance of precipitation is 40 percent. New snow accumulation of less than a half inch possible.

Friday: Mostly sunny, with a high near 55. North wind 5 to 10 mph becoming east.

Friday Night: Partly cloudy, with a low around 35. Southeast wind between 10 and 15 mph.

Saturday: A 20 percent chance of showers after 10 a.m. Mostly cloudy, with a high near 59. Breezy, with a south wind between 15 and 25 mph, with gusts as high as 35 mph.

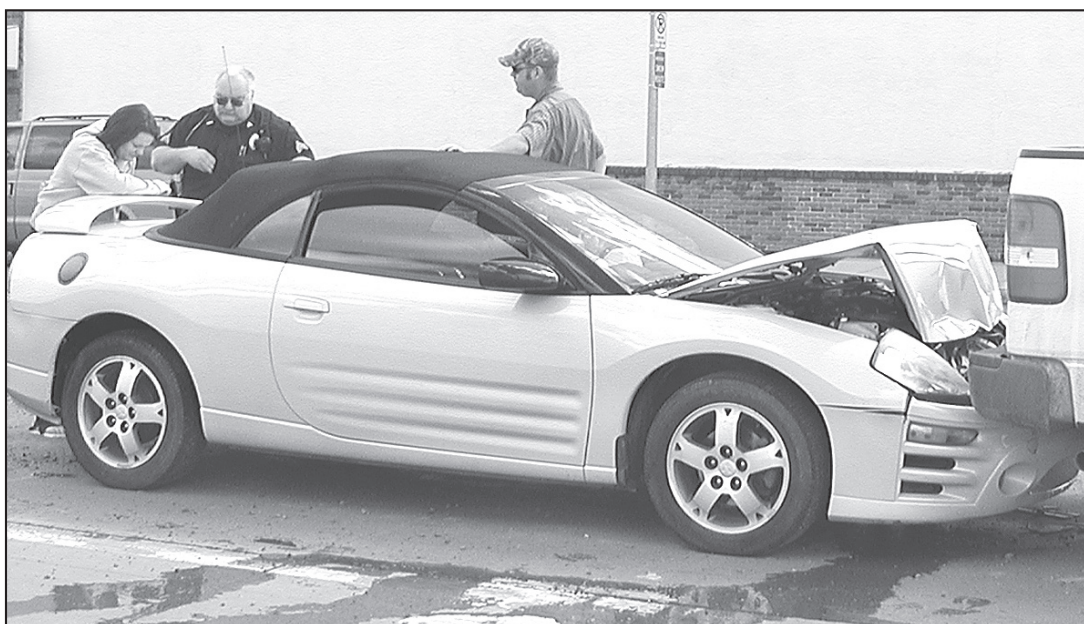
Saturday Night: A 30 percent chance of showers. Mostly cloudy and breezy, with a low around 38.

Sunday: A 30 percent chance of rain. Cloudy, with a high near 55.

Sunday Night: A 30 percent chance of rain. Mostly cloudy, with a low around 34.

Wednesday: High, 69; Low 22
Precip: Wed. 0.00 inches
Month: 0.11 inches
Year: 1.18 inches
Normal: 3.89 inches
(K-State Experiment Station)

Crunched



VERA SLOAN/Colby Free Press

City police officer Kent Dible said no tickets were issued in an accident involving Colby college student Jessica Barker, Abilene, after the car she was driving struck a pick-up truck driven by William Taylor of Colby. The accident happened last Thursday at the corner of Franklin and Fourth Street. Barker was taken by ambulance to Citizens Medical Center complaining of back pain.

Program will help replace inefficient appliances

TOPEKA — Helping Kansas families cut energy use and reduce utility bills is the goal of a statewide initiative launched by the Kansas Housing Resources Corp., the Residential Appliance Replacement Program.

This program allows low-income homeowners and renters to replace old, energy-hungry and unsafe appliances with new, energy-efficient, environmentally friendly models.

"Installing energy-efficient appliances is one of the best ways to lower a household's energy costs," said Gary Allsup, the corporation's executive director. "Kansas Housing is pleased to help families save both energy and money."

Cost savings from replacing outdated appliances can be substantial, he said.

While exact energy use depends on the model, the U.S. Environmental Protection Agency estimates that simply replacing a 20-year-old refrigerator with an Energy Star model will save roughly 700 kilowatt hours of electricity or more each year.

A total of \$4 million in Low-Income Energy Assistance money is available for the program on a first-come, first serve basis. When the money is gone, so is the program.

Applicant household Adjusted Gross Income must not exceed 75 percent of the state median income, one person, \$27,247; two people, \$35,630; three, \$44,014; or four, \$52,397.

The housing agency will review applications for eligibility and certify that household income meets the guidelines.

Applicants may replace refrigerators, water heaters, heating and cooling systems and window air units that are at least 10 years old.

Applicants must be a Kansas resident and the home must be within the state. Renters may

Council wants property cleaned

From "CITY," Page 3

property or the council can take action, said Armstrong.

The council also approved the mayor signing an order of violation for property on 310 S. Franklin Ave for not complying with the environmental code. Owners of the residence will have 30 days to clean up the area.

T.C. McDonald, who rents out the property, said he would clean it up.

In other business, the council:

- Heard Marvin Bickner of the Colby Tree Board report that the board's major project in 2008 was planting trees at the ball fields and having a drip irrigation system installed on the new trees, as well as previously planted trees, at the ball fields. The group's main goals

for 2009 are to maintain existing projects and to plant as many trees as the budget will allow, he said.

The tree board recommended removing tall tree stumps in Fike Park that were left when trees were cut down a couple years ago. They suggested the city contract a professional tree service to trim trees in the parks. Many older trees in Fike and Phillips parks need to be pruned, Bickner said.

- Approved a bid from Dan Keller Audio Systems for \$4,742 for a sound system in the council meeting room at the City Hall.

- Approved defining city boundaries as of Dec. 31, including recently annexed properties such as the sewer plant, Bosselman's Truck Stop, and Well 15 east of Colby, said Armstrong.

program must deliver and install the selected new energy-efficient appliance, and properly dispose of the old unit. If you're a retailer and would like to participate, call (785) 296-7912. Women and minority business owners and contractors are encouraged to apply.

Corrections

The Colby Free Press wants to maintain an accurate record of our town. Please report any error or lack of clarity in a news story to us at 462-3963.

BUSINESS DIRECTORY

To have your ad placed in the Business Directory call Jasmine or Heather today at 462-3963.

Strength. Stability. Service.
And us.

That's what you can count on. We're in the business of helping people just like you through all stages of life with insurance and financial products. To learn more call today.

www.fbfs.com
(785) 462-3388

Auto / Home / Life / Business / College / Retirement

Farm Bureau Life Insurance Company*West Des Moines, IA. Farm Bureau Mutual Insurance Company**West Des Moines, IA. *Company of Farm Bureau Financial Services © 2007 FBL Financial Group, Inc. 346

At Your Service

WORLDWIDE · Vacation Packages · Cruises · Tours · Groups · Flights · Hotels · Trains · Cars

155 W. 4th, Colby, KS 67701
Phone: 785.462.6999
Fax: 785-460-0852
Toll Free: 1.888.690.7077

CALL IN OR FAX YOUR INTERNET QUOTES AND OTHER ADS! WE CAN BOOK THEM FOR YOU WITH LOCAL, CARING SERVICE!!

VACATION SPECIALS	From	# Nights
LAS VEGAS Air & Hotel	\$250	4
DISNEY WORLD Park Passes, Air & Hotel	\$505	3
MEXICO Air & Hotel	\$800	3
CARIBBEAN CRUISE Cruise & Air	\$1,050	5
ALASKAN CRUISE Cruise & Air	\$1,500	7
HAWAII Air & Hotel	\$740	3
LONDON, ENGLAND Air & Hotel	\$700	3
AMTRAK EXPLORE AMERICA	\$359	Max 45

Round Trip Travel
BOOK SPRING BREAK NOW!
Call for Bus Tours Schedules.
All specials may be for specific dates and are subject to availability

Murray Roofing & Construction

Residential & Commercial
(785) 462-6908

Residential roofs
Flat & Low-Sloped Roofs
Metal Retro-Fit
Energy Efficient Roofing Solutions

Vinyl & Steel Siding
Decks & Patios
Wood & Vinyl Fencing
Soffit & Fascia

FREE ESTIMATES

FREE ESTIMATES

Jim Murray - Owner
(785) 443-1339

FAMILY DENTAL CARE

The Latest Technology and Most Complete Care Available!

- Root Canals • Orthodontics
- Implants • Wisdom Tooth Surgery

New Patients Welcome
No Referral Necessary ~ Financing Avail.

1690 W. 4th St., Colby ~ 785-460-3999
Toll Free: 1-866-305-3999

SHAWN D. JENSEN, D.D.S.

GRAND OPENING

Cumulus COMPUTERS

Brett Bandy • 785-443-3950

Check Out Our Great Prices!

- Computer repair
- Networking
- Software upgrades
- Custom-built PC's
- Consulting
- Hardware upgrades

www.cumuluscomputers.com

VISIT
Prairie Museum of Art & History

9-5 M-F
1-5 Sat. & Sun.
Closed Mondays Nov.-Mar.
Closed Holidays

- *World Class Kuska Collection
- *Kansas KIDS Corner
- *Cooper Barn an 8 Wonder of KS Architecture
- *Hands on HIGH PLAINS HISTORY
- *Prairie Museum Art

Thomas County Historical Society
1905 S. Franklin * Colby, KS 67701
785 460-4590
prairiem@st-tel.net
www.prairiemuseum.org

785-462-3963

ROOFMASTERS

Your Local Roofing Contractor

425 East Hill, Colby, KS
Licensed - Bonded - Insured

RESIDENTIAL	1-800-536-6642	COMMERCIAL
Tamko Shingles	1-785-462-6642	Rubber Single Ply
GAF Shingles		White TPO Single Ply
Wood Shingles		Built Up Systems
Metal Roofs		Modified Systems

FREE ESTIMATES

Elastomeric Rubber Coating For Metal Roofs

A GOOD SIGN EVEN IN TIMES LIKE THESE.

Everyone's looking for an encouraging sign in today's economy. The fact is, they'll see one in over 17,500 locations across North America. Because for over 86 years, State Farm® agents have been there helping people protect the things that matter most. That's why more people trust State Farm. And we consider that a very good sign.

Jane W. Johnson, Agent
505 E. 4th Street
Colby, KS 67701
Bus: 785-462-7525
jane.johnson.gh2@statefarm.com

LIKE A GOOD NEIGHBOR, STATE FARM IS THERE.

PROVIDING INSURANCE AND FINANCIAL SERVICES

State Farm, Bloomington IL

NEW SYSTEM PROFESSIONAL WINDOW CLEANING

Residential ~ Commercial
Free Estimates

800-611-6735
www.MyWindowCleaner.net

SERVING NW KANSAS SINCE 1992
Chris & Beth Lewon 650 N Grant, Colby, KS