

Family

FFA raises, sells plants

The Colby High FFA members and agriculture class are preparing for spring greenhouse sales to begin Thursday. Shoppers will receive a free bird feeder with their purchase.

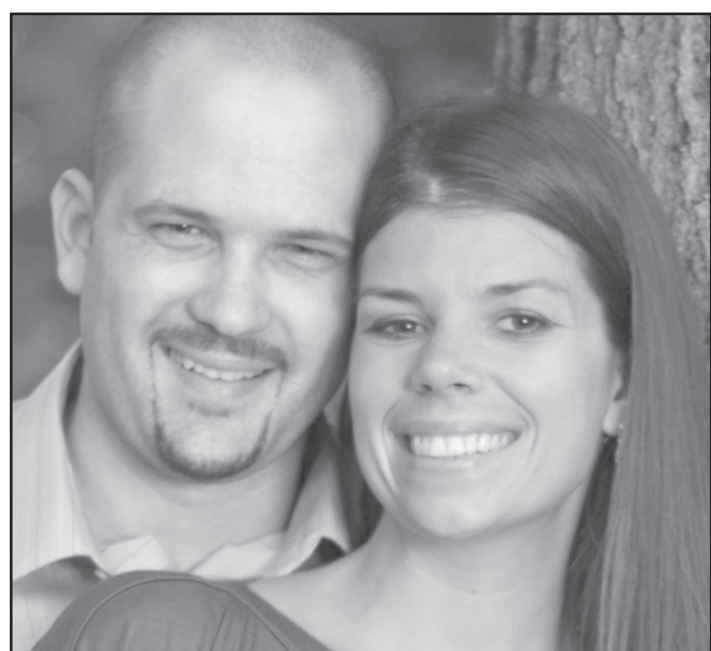
The students have spent a lot of hours tending to the greenhouse, said teacher Shawna Howell-Hoffman, providing basic care, planting and transplanting seedlings, taking cuttings and reproducing plants, applying fertilizers and pesticides and doing basic maintenance and repairs.

They are gaining knowledge and hands-on experience in greenhouse management, she said. This supervised agriculture experience is an opportunity to study and explore how to run a business while maximizing profits and minimizing cost.

The greenhouse is at 240 N. Copeland, east of Dennen Field. For information, contact Howell-Hoffman at 460-5320 or showell@colbyeagles.org.

Vegetables and fruits for sale include okra, watermelon, zucchini, tomato, cucumber, bean, pepper, broccoli, corn and strawberry plants are available.

Other plants include geraniums, coleus, impatiens, begonias, pansies, marigolds, petunias, morning glory, alyssum, celosia, airplane plants, Swedish ivy, kolache, zinnias, ageratums and Boston ferns.



Heath Ramsey, Mikayla Reynolds

Colby grad plans Missouri wedding

Heath Ramsey, a 1999 Colby high school graduate, plans to marry Mikayla Jill Reynolds May 23 in Weston, Mo.

The bride graduated from Mount Pleasant High School in Iowa in 1999. The following year, she was an exchange student in Brazil. She received a bachelor's degree in human resource management from DeVry University of Kansas City in 2005 and works for the Hay Group of Kansas City.

The groom graduated from DeVry in 2003. He received a bachelor's degree in telecommunications management and a master's in business management from the Keller Graduate School of Management at DeVry. He is operates Umbrella Medical Systems in Kansas City.

After a honeymoon in Brazil, the couple will be living at 13302 Forest Oaks Drive, Smithville, Mo.

Babies

Colin Moeller

Colin Henry Moeller, son of Andrew Homann and Chelsey Renee Moeller of Manhattan, was born March 17, 2009, at Mercy Health Center in Manhattan. He weighed 7 pounds, 13 ounces and measured 21 inches. Two-year-old sister Addison Renee welcomed him home. Grandparents are Chris and Judy Stephens and Larry and Stephanie Moeller, all of Manhattan. Great-grandparents are Dorothy Stephens, Wichita, and the late Joe Stephens, and Veanna Martin of Colby and the late Arthur Martin.



Alora Dible

Alora Jane Dible

Alora Jane Dible, daughter of Andy and Kenna Dible of Oakley, was born at Citizens Medical Center on April 11, 2009. She weighed 7 pounds, 6 ounces and measured 20 inches. Grandparents are Dan and Debra Dible of Menlo, and the late Judy Dible, and Mike and Carol Lichty of Kirk, Colo. Great-grandparents are Louis Dible of Menlo, Luetta Scott of Oakley and Larry and Twyla Richards of Hoxie.



Kellie Greene

Kellie Jean Greene

Kellie Jean Greene, daughter of Ameree and Kenny Greene of Hoxie, was born April 8, 2009, at Citizens Medical Center. She weighed 6 pounds, 13 ounces and measured 19 inches. Sister Kaylie Ann welcomed her home. Grandparents are Karen and Allan Applehans of Hoxie, Jim and Wanda Kelley of Grainfield, Kim and Jim Boegar of Grinnell and Dan Fringer of Oberlin.

Corrections

The Thomas County transit van will operate from 8 a.m. to 2 p.m. today, not until noon, as was reported in the Briefly column of the Friday, April 10, and Monday, April 13, issues of *The Colby Free Press*. This was an editing error.

☆☆☆☆
The Colby Free Press wants to maintain an accurate record of our town. Please report any error or lack of clarity in a news story to us at 462-3963.

Students win Honor Society positions

Brandon Ritter of Selden and Sheldon Nelson of Gem have been inducted into the National Technical Honor Society chapter at the Northwest Kansas Techni-

cal College in Goodland. To qualify, students must be eligible for graduation and have an average of 3.0 or above, with a faculty recommendation.

The society recognizes excellence in workforce education and encourages students to reach for higher levels of achievement.

BUSINESS DIRECTORY

To have your ad placed in the Business Directory call Jasmine or Heather today at 462-3963.

Strength. Stability. Service.
And us.

That's what you can count on. We're in the business of helping people just like you through all stages of life with insurance and financial products. To learn more call today.

www.fbf.com
(785) 462-3388

Auto / Home / Life / Business / College / Retirement

At Your Service

WORLDWIDE - Vacation Packages - Cruises - Tours - Groups - Flights - Hotels - Trains - Cars

155 W. 4th, Colby, KS 67701
Phone: 785.462.6999
Fax: 785-460-0852
Toll Free: 1.888.690.7077

CALL IN OR FAX YOUR INTERNET QUOTES AND OTHER ADS! WE CAN BOOK THEM FOR YOU WITH LOCAL, CARING SERVICE!!

Murray Roofing & Construction

Residential & Commercial (785) 462-6908

Vinyl & Steel Siding
Decks & Patios
Metal Retro-Fit
Wood & Vinyl Fencing
Soffit & Fascia

FREE ESTIMATES

Jim Murray - Owner
(785) 443-1339

FAMILY DENTAL CARE

The Latest Technology and Most Complete Care Available!

- Root Canals • Orthodontics
- Implants • Wisdom Tooth Surgery

New Patients Welcome
No Referral Necessary ~ Financing Avail.

1690 W. 4th St., Colby ~ 785-460-3999
Toll Free: 1-866-305-3999

SHAWN D. JENSEN, D.D.S.

Round Trip Travel

BOOK SPRING BREAK NOW!
Call for Kus Tours Schedules.
All specials may be for specific dates and are subject to availability.

VACATION SPECIALS	From	# Nights
LAS VEGAS	\$250	4
DISNEY WORLD	\$505	3
MEXICO	\$800	3
CARIBBEAN CRUISE	\$1,050	5
ALASKAN CRUISE	\$1,500	7
HAWAII	\$740	3
LONDON, ENGLAND	\$700	3
AMTRAK EXPLORE AMERICA	\$359	3

Per Adult

VISIT

Prairie Museum of Art & History

9-5 M-F
1-5 Sat. & Sun.
Closed Mondays Nov.-Mar.
Closed Holidays

*World Class Kuska Collection
*Kansas KIDS Corner
*Cooper Barn an 8 Wonder of KS Architecture
*Hands on HIGH PLAINS HISTORY
*Prairie Museum Art

Thomas County Historical Society
1905 S. Franklin * Colby, KS 67701
785 460-4590
prairiem@st-tel.net
www.prairiemuseum.org

Place Your Ad Here!

Call Jasmine or Heather Today!

785-462-3963

ROOFMASTERS

Your Local Roofing Contractor

425 East Hill, Colby, KS
Licensed - Bonded - Insured

RESIDENTIAL	1-800-536-6642	COMMERCIAL
Tamko Shingles		Rubber Single Ply
GAF Shingles	1-785-462-6642	White TPO Single Ply
Wood Shingles		Built Up Systems
Metal Roofs		Modified Systems

FREE ESTIMATES

Elastomeric Rubber Coating For Metal Roofs

GRAND OPENING

Cumulus COMPUTERS

Brett Bandy • 785-443-3950

Check Out Our Great Prices!

- Computer repair
- Networking
- Software upgrades
- Custom-built PC's
- Consulting
- Hardware upgrades

www.cumuluscomputers.com



A GOOD SIGN EVEN IN TIMES LIKE THESE.

Everyone's looking for an encouraging sign in today's economy. The fact is, they'll see one in over 17,500 locations across North America. Because for over 86 years, State Farm® agents have been there helping people protect the things that matter most. That's why more people trust State Farm. And we consider that a very good sign.

LIKE A GOOD NEIGHBOR, STATE FARM IS THERE!

Jane W Johnson, Agent
905 E 4th Street
Colby, KS 67701
Bus: 785-462-7525
jane.johnson.qh2@statefarm.com

PROVIDING INSURANCE AND FINANCIAL SERVICES
State Farm, Bloomington IL

NEW SYSTEM PROFESSIONAL WINDOW CLEANING

Residential ~ Commercial
Free Estimates

800-611-6735
www.MyWindowCleaner.net

SERVING NW KANSAS SINCE 1992
Chris & Beth Lewon 650 N Grant, Colby, KS