

KELSIE BARRETT



I plan to attend Colby Community College.
Parents: Richard and Koleen Barrett

LAUREN BETHELL



I plan to attend Taylor University in Indiana and major in
Psychology.
Parents: Tom and Anne Bethell

HEATHER BINDER



I plan to attend Colby Community College for two years
and then to Hays Cosmetology.
Parents: Ron and Tera Binder

TARBET INCORPORATED
1055 Plains Avenue
462-7432

HomeLand
REALTY AUCTION
"Western Hospitality"
410 N. Franklin Colby, KS
785-462-8255

TUBBS & SONS FORD SALES
810 S. Range * Colby
Equal Opportunity Employer

DOC'S ON CALL
1005 S. Range, Suite 200, 460-8000

ADAC
Alcohol & Drug Abuse Council
1523 West Fourth St. • P.O. Box 100
Colby, KS 67701
785-462-6111 • 1-800-794-3046

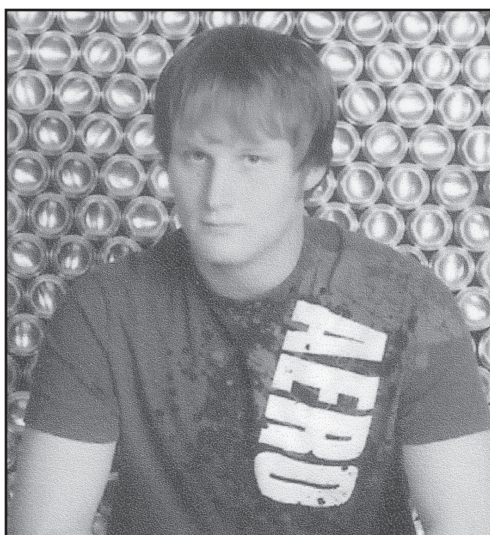
Someplace Special
Floral & Gifts
185 W. 4th
785-462-7136

JARED BIXENMAN



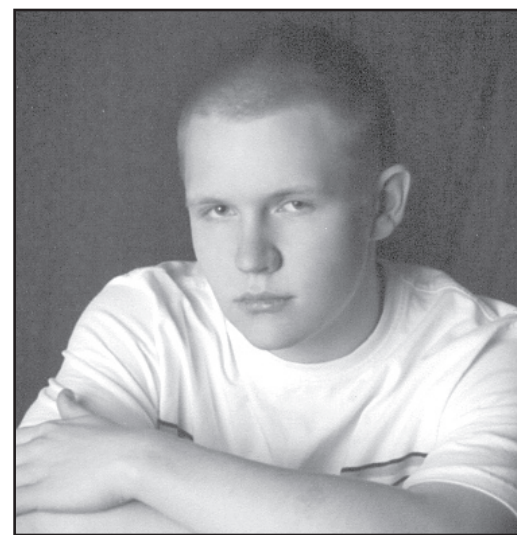
I plan to attend Colby Community College as a
Presidential Scholar for two years and then transfer to
Wichita State to major in Aerospace Engineering.
Parents: Ken and Colleen Bixenman

ERIC BLANTON



My plans are undecided.
Parents: Greg Blanton

JAMES BOMBA



I plan to attend Colby Community College to study
Accounting, then transfer to a University that supports
competitive soccer.
Parents: John and Lisa Bomba

GREAT PLAINS SPRAYING
785-462-7333
Ken Bixenman, Owner/Operator
Colby Airport • East Hangar

HomeLand REALTY AUCTION "Western Hospitality"
410 N. Franklin Colby, KS 785-462-8255
QUALITY INN
1950 S. Range 462-3933

Kersenbrock Funeral Chapel
745 S. Country Club Drive 462-7979
DOC'S ON CALL
1005 S. Range, Suite 200, 460-8000

WARK'S EMBROIDERY and Gifts
1295 E. 8th Street 785-460-3119

DOC'S ON CALL
1005 S. Range, Suite 200, 460-8000

STATE FARM INSURANCE
Jane Johnson - 462-7525