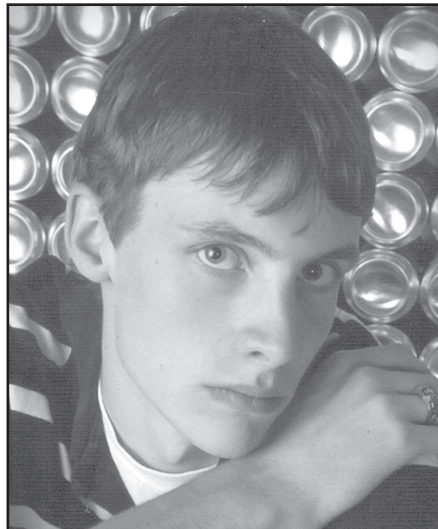


**ALEXA GARCIA**



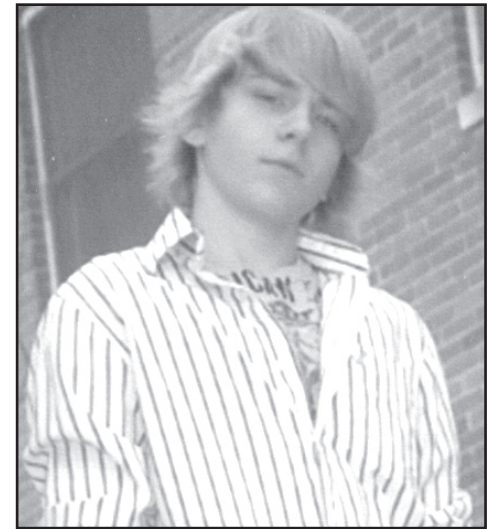
*I plan to attend Colby Community College.*  
Parents: Joe and Denise Garcia and Alicia Riedel

**CHRISTOPHER HANSEN**



*I plan to attend College.*  
Parents: Kenny and Kandie Hansen

**BRANDON HARLOW**



*I plan to go to College for Electrical Engineering. I also may join a branch of the military.*  
Parents: Jeff and Juli Harlow

**GARCIA'S FLOOR COVERING**  
785-460-0053 • Colby, KANSAS



**S & W SUPPLY**

185 West Fifth Street, Colby, Kansas 67701  
(785) 462-3373 (800) 747-3394

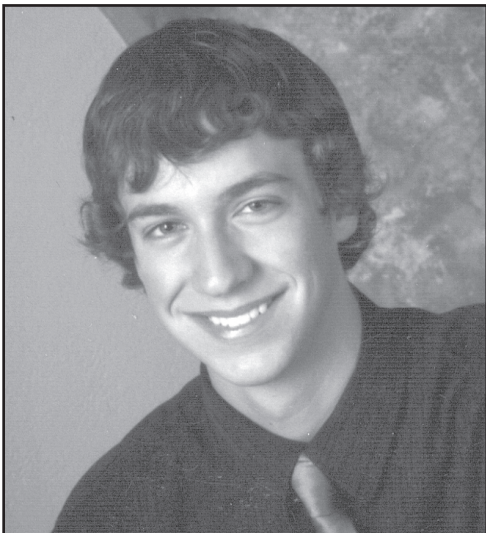


**STATE FARM INSURANCE**  
Jane Johnson - 462-7525



1005 S. Range, Ste. 100, Colby  
785-462-8231 [www.eyeclinic.com](http://www.eyeclinic.com)

**JEREMY HARTER**



*I plan to attend KSU to major in Chemical Engineering.*  
Parents: Lowell and Sue Harter

**ASHLEY HEIER**



*I plan to attend Colby Community College and then a University to become an Interior Designer.*  
Parents: Tim Heier and Becca Eubanks

**NICK HENRY**



*I am undecided.*  
Parents: Chris Richard and Barbara Bisser



**Montana Mikes Steakhouse**  
1855 S. Range~462-7178



460-3721  
1055 Taylor Avenue  
Colby, KS 67701



Southwind Plaza  
Colby



Colby, Ks.  
405 W. Horton • 785-462-33914



**STATE FARM INSURANCE**  
Jane Johnson - 462-7525



500 N. Franklin  
462-3313

**DOC'S ON CALL**

1005 S. Range, Suite 200, 460-8000