

On the Beat

COLBY POLICE Thursday

12:39 a.m. - Security check at Twister's.
 12:51 a.m. - Harassing text message received from ex-boyfriend. No report.
 1:05 a.m. - Traffic/driving under the influence incident at 115 S. School. 24/7 Recovery towed vehicle.
 1:05 a.m. - Narcotics violation related to previous item.
 2:51 a.m. - Report for traffic stop in the 200 block of W. Second for minor in possession. Butch's towed vehicle.
 11:13 a.m. - Subject called about daughter being involved in harassment incident overnight at 115 S. School. Provided information.
 1:19 p.m. - Pickup threw gravel onto vehicle earlier at Fourth and Country Club Dr.
 1:31 p.m. - Funeral block from Harrison's Chapel to Beulah Cemetery.
 3:33 p.m. - Suspicious vehicle: person sitting in parking lot at Colby Medical Center. Waiting on husband.
 3:46 p.m. - Accident in parking lot at Colby Community College.
 4:31 p.m. - Supplemental report on warrant arrest of Keith Kuder.
 7:30 p.m. - Accident at Colby High School.
 8:30 p.m. - Multiple reports of fireworks around 250 E. Cherry.
Friday
 12:55 a.m. - Checks at B-Hive and Twisters.
 4:49 a.m. - House checks.
 10:30 a.m. - Child in need of care report supplement.
 12:46 p.m. - All OK with woman holding up a sign at the west entrance to Walmart.
 2:39 p.m. - Driving while suspended report for traffic stop at the north entrance to Friendly Acres at 1150 S. Franklin.
 2:46 p.m. - Spoke to subject about loud exhaust on motorcycle at 1150 S. Franklin.
 5:30 p.m. - Couple arguing at Sixth and Range.
 6:19 p.m. - Assisted motorist out of gas on Country Club between Willow and College.
 8:56 p.m. - Someone refusing to leave residence.
 11:52 p.m. - Welfare check at 105 E. Walnut.
Saturday
 1:47 a.m. - Walk-through at Twisters.

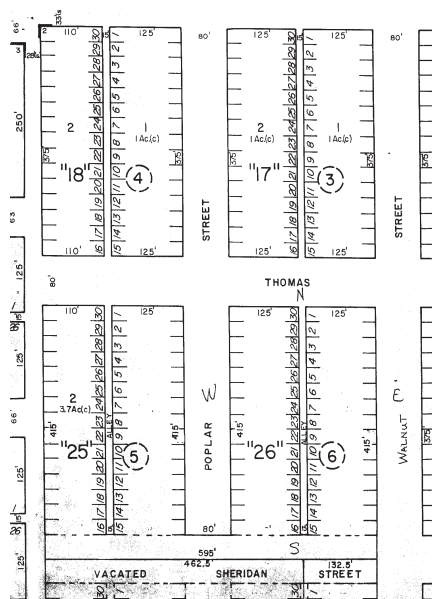
2:54 a.m. - Possible smell of drugs at 455 Austin. Not found.
 5:58 a.m. - House checks.
 9:58 a.m. - Hit-and-run accident at 155 W. Webster.
 11:26 a.m. - Caller said ex-husband had car overnight; had accident at unknown location. Report filed for obstruction; accident occurred in county. Turned over to sheriff's office.
 11:34 a.m. - Fire alarm going off at Colby House. Assisted on call; no fire; alarm panel problem.
 2:06 p.m. - Subject came to station about someone owing him money for a vehicle. Spoke to subjects; civil matter.
 2:56 p.m. - Juveniles causing damage at playground at Friendly Acres at 1150 S. Franklin. Spoke to juveniles; they will clean up.
 8:20 p.m. - Assisted motorist in lot between Lobo Liquor and Fotogirl.

THOMAS COUNTY SHERIFF Thursday

9:10 a.m. - Caller said fiancé kicked her out last night at 1099 County Rd. Z; won't let her talk to their daughter today. Civil matter; information provided.
 1:31 p.m. - Assisted police with funeral block from Harrison's Chapel to Beulah Cemetery.
Friday
 10:45 a.m. - Caller received phone scam call this morning at 610 W. Oak. Provided information, no report.
 4:58 p.m. - Goats on I-70 eastbound mile 70. Contacted owner.
 5:30 p.m. - Assisted Colby Police at Sixth and Range.
 11:15 p.m. - Report on deer hit at County Rds. P and 11.
Saturday
 11:54 a.m. - Oakley police reported possible drunken driver in pickup with expired tags headed north from Oakley on U.S. 83. Not found.
 12:07 p.m. - Driving while suspended/failure to report accident: report filed on accident that occurred north of Colby. Suspect arrested at 1040 W. Sixth by Colby police.
 12:53 p.m. - Report filed on above incident. Accident scene located at Veteran's Memorial Drive and K-25.
 11:07 p.m. - Caller reported dropping off subjects at mile 49 eastbound U.S. 24. Everything OK, subjects were picked up by someone else.

Public Notice

Notice is hereby given a petition has been filed with the Thomas County Board of Commissioners by Denny P. and Traci L. Nieman of Gem, Kansas, praying for the vacation of Block 6, Lots 1 through 30 and alley, lying West of Walnut Street and East of Poplar Street in the Townsite of Gem, Kansas.



Notice is hereby given that a public hearing shall be held on November 9, 2009 at 9:00 a.m. in the County Commissioners Room of the Thomas County Courthouse, at which time the Board of County Commissioners may approve or disapprove the request for the vacating of said Blocks, Lots and Alley.

Dated this 12th day of October, 2009.
 (S) Shelly A. Harms Thomas County Clerk
 Board of County Commissioners Ken Christiansen Paul M. Steele Byron Sowers

(Published in the Colby Free Press on Wednesdays, October 21 and 28, 2009)

WHAT DOES "getting a jump start on this year's Christmas cards" And "recycling" HAVE IN COMMON?

OLD CHRISTMAS CARDS
 +
 EMBELLISHMENTS
 (stamps, ribbon, buttons, brads, glitter....)
 =
RECYCLED CHRISTMAS CARDS

So, if you have a box (or 2) of old, used Christmas cards and don't know what to do with them - bring them and turn them into this year's Christmas cards. Don't worry if you do not have any or don't know where to find yours - there will be plenty available for you to use - along with all the other supplies.

Saturday, October 24th
 1 - 6 p.m.
Fellowship Hall - First Baptist Church
 (615 W. Webster)
 Christmas music to get you in the holiday mood - as well as refreshments.

What To Bring:

- ❖ Old Christmas cards
- ❖ Embellishments, papers, stamps, etc. of your own
- ❖ A jolly mood
- ❖ Love offering

• Chair lift is available at first east door •

BUSINESS DIRECTORY

To have your ad placed in the Business Directory call Jasmine or Heather today at 462-3963.

Colby Massage Therapy Elite
 Cynthia England
 Massage Therapist

Located in Colby, KS
Gift Certificates Available!
By appointment only.

316-207-0943
\$35 for one hour
\$50 for 1 1/2 hours

Bring yourself back to balance

Live The Life You Always Imagined!

Riverside Plaza offers spacious residences, state-of-the-art appliances, elegant décor, and unrivaled amenities. Luxury retirement living. You've Earned It!

RIVERSIDE PLAZA
 Luxury Retirement Living

600 E. Elm • Salina • 785-822-1300 • www.rsplaza.com

VISIT
 Prairie Museum of Art & History

9-5 M-F
 1-5 Sat. & Sun.
 Closed Mondays Nov.-Mar.
 Closed Holidays

- World Class Kuska Collection
- Kansas KIDS Corner
- Cooper Barn an 8 Wonder of KS Architecture
- Hands on HIGH PLAINS HISTORY
- Prairie Museum Art

Thomas County Historical Society
 1905 S. Franklin • Colby, KS 67701
 785 460-4590
priaiem@st-tel.net
www.prairiemuseum.org

Give it a try! See what the business directory can do for you!

ROSALES PLUMBING

For All Your Commercial & Residential Plumbing Needs
 24-Hour Emergency Service Available
Also Servicing Heating, Air and Septic Tank Systems!

David J. Rosales
 Owner

(785) 675-8254 or (785) 657-7251
 832 17th Street • PO Box 742
 Hoxie, Kansas 67740

FAMILY DENTAL CARE

The Latest Technology and Most Complete Care Available!

- Root Canals • Orthodontics
- Implants • Wisdom Tooth Surgery

New Patients Welcome
 No Referral Necessary ~ Financing Avail.
 1690 W. 4th St., Colby ~ 785-460-3999
 Toll Free: 1-866-305-3999

SHAWN D. JENSEN, D.D.S.

Need a new insurance partner?

Auto | Home | Business | Farm/Ranch | Life
 College | Retirement

David Browne III
 550 N Franklin
 Colby, KS
 (785) 462-3388

FARM BUREAU FINANCIAL SERVICES
 Insurance • Investments
www.fbfs.com

Farm Bureau Life Insurance Company/West Des Moines, IA. Farm Bureau Mutual Insurance Company/West Des Moines, IA. Companies of Farm Bureau Financial Services © 2007 FBL Financial Group, Inc. 327

ROOFMASTERS

Your Local Roofing Contractor
 425 East Hill, Colby, KS
 Licensed - Bonded - Insured

RESIDENTIAL
 Tamko Shingles
 GAF Shingles
 Wood Shingles
 Metal Roofs

1-800-536-6642
 1-785-462-6642

COMMERCIAL
 Rubber Single Ply
 White TPO Single Ply
 Built Up Systems
 Modified Systems

FREE ESTIMATES

Elastomeric Rubber Coating For Metal Roofs

The Tool Box
 1984

Kitchen & Bath Sales & Service

Custom Cabinetry • Counter Tops
 Design, Fabrication & Installation
 Wood Floor Installation & Refinishing

Shop 462-7843 • Dennis 443-3140
www.toolboxkitchen.com

A personal articles policy can help keep **YOUR POSSESSIONS PROTECTED.**

Call today to see if your renters or homeowners insurance provides broad enough coverage.

Jane W. Johnson, Agent
 905 E 4th Street
 Colby, KS 67701
 Bus: 785-462-7525
jane.johnson.gh2@statefarm.com

LIKE A GOOD NEIGHBOR STATE FARM IS THERE.®

Providing Insurance and Financial Services

State Farm Fire and Casualty Company, State Farm General Insurance Company-Bloomington, IL
 State Farm Florida Insurance Company-Winter Haven, FL
 State Farm County Mutual Company of Texas-Dallas, TX
 statefarm.com®
 P03830 12/04

WORLDWIDE • Vacation Packages • Cruises • Tours • Groups • Flights • Hotels • Trains • Cars

155 W. 4th, Colby, KS 67701
 Phone: 785.462.6999
 Fax: 785-460-0852
 Toll Free: 1.888.690.7077

CALL IN OR FAX YOUR INTERNET QUOTES AND OTHER ADS! WE CAN BOOK THEM FOR YOU WITH LOCAL, CARING SERVICE!!

VACATION SPECIALS

	From	# Nights
LAS VEGAS	Air & Hotel \$250	4
DISNEY WORLD	Park Passes, Air & Hotel \$505	3
MEXICO	Air & Hotel \$900	3
CARIBBEAN CRUISE	Cruise & Air \$1,050	5
ALASKAN CRUISE	Cruise & Air \$1,500	7
HAWAII	Air & Hotel \$740	3
LONDON, ENGLAND	Air & Hotel \$700	3
AMTRAK EXPLORE AMERICA	\$359	Max 45

Per Adult

Round Trip Travel
BOOK HOLIDAY VACATIONS NOW!
 Call for Bus Tours Schedules.
 All specials may be for specific dates and are subject to availability

DIAMOND SEPTIC

Having Septic problems and wanna save \$\$\$\$?

We can save your leachfield without digging up your yard and the high cost of replacing it. For a thousand dollars or less, we can add 20-25 years to the life of your leachfield. We also do drain cleaning and septic repairs of all kinds! We guarantee all work we perform.

For more information please call:
 (785) 821-4775

"NOTHING TO IT BUT TO DO IT"

- Painting
- Residential Roofing
- Siding
- Commercial Roofing
- Small Construction Projects

AB.GD. ROOFING & CONSTRUCTION
 "NOTHING TO IT BUT TO DO IT"

Adam Bowers
 Owner/Operator
 785-462-0438
 Colby, KS

Curtis Dulany
 Owner/Operator
 785-269-7382
 Brewster, KS

Licensed and Insured

NEW SYSTEM

PROFESSIONAL WINDOW CLEANING

(800) 611-6735

www.MyWindowCleaner.net
 Serving Colby since 1992!

Commercial • Residential • Free Estimates