

To place your classified ad, mail (155 W. Fifth), fax (785-462-7749), phone (785-462-3963), or stop by our office at 155 W. Fifth

Card of Thanks

We would like to thank everyone that helped with or attended the benefit for our family. The Bill Kennedy Family.
---12/14---12/18---

Notices

Contributions for medical, travel and burial expenses for 2 month old Mia Dickson, granddaughter of Tim and Leisa Hanses can be dropped off at the CCC Bookstore, Jim's Electric, or the Colby Fire Department. Cards can also be sent to Josh and Kayla Dickson. 9752 Montclair Heights Court, Las Vegas, NE 89178.
---12/11---12/16---

Fresh Crop Pecans - Walnuts - Cashews. Episcopal Church Women. Pick up at Colby Canvas Company or call 785-462-2505.
---12/3---12/18---

Company's Coming - Carpet Cleaning Special: 3 Rooms only \$124.95! Dry-Foam & Green Seal safe. Servicing NWKS mileage free since 1987! A+ Cleaners (785) 538-2526 or (785) 443-5400, Johnene Cheney.
---11/4---1/1---

Dan is back! Dan Geschwentner. Small remodeling and repair jobs. Call 785-443-3673.
---12/15---TFN---

ASHLEY FURNITURE Dealer for Northwest Kansas. Colby True Value. 785-460-6311.
---12/5---TFN---

Help Wanted

Crop Adjuster Opportunity. Rural Community Insurance Services, (RCIS), a Wells Fargo company and a leader in the crop insurance industry, has a full-time Crop Adjuster position available to cover the territory of Northwestern Kansas. Incumbent will office out of their home in the territory. Incumbent will possess 6+ months of customer service experience or 6+ months agriculture related background, experience or agriculture related education. Some physical requirements. Reliable means of transportation with the ability to travel within the territory. Will possess strong verbal communication skills and strong customer service skills. Good computer skills preferred. RCIS offers a comprehensive benefits package. Salary: DOE. To apply, visit www.wellsfargo.com/careers and search for requisition #3320254. Deadline to apply is January 9, 2010. Wells Fargo is an Affirmative Action and Equal Opportunity Employer, M/F/D/V.
---12/16---12/21---

Farm-worker, 1/16/10 - 9/1/10, LRF, Inc, Colby, KS. 3 temp positions. Drive trucks and tractors to perform crop raising duties. Plant, cultivate crops using tractor drawn machinery. Operate, repair farm implements. Haul livestock, grain to market. Clean MVR, 3 mo. experience required. \$8.64/hr, work guarantee, tools/equip/housing provided, transportation and subsistence exp. reimbursed. Apply at nearest job service office. Job #8349099.
---12/16---12/21---

Help Wanted

Bartender at Meadowlake Golf Course and Lounge. Excellent wages. Must be 21. Apply in person.
---12/2---TFN---

Help wanted, all positions at Colby Pizza Hut. Apply at www.jobspiz-zahut.com.
---11/20---1/1---

Sales Associate. Full-time/Part-time. Salary-Commissions-Benefits. Send resume to PO Box 703 Colby, KS 67701.
---9/23---TFN---

BREWSTER - The Colby Free Press needs a correspondent to report local news in the Brewster area. Call Kevin or Vera at 785-462-3963. Paid by the column.
---3/25---TFN---

Houses for Rent

2 bedroom, 1 bath, 2 car garage. Available now. 785-462-7468 or 785-462-1047.
---12/11---TFN---

Nice 3 bedroom, wood floors, DW, A/C. No smoking, No pets. \$500 up stairs only. 785-443-2391.
---12/9---12/21---

Misc. for Sale

Fisher Price Power Wheel. Motorized Jeep Wrangler 4x4. One seater. Battery charger. \$50. 785-460-3748.
---12/16---12/21---

Wrought iron manufacturing equipment and some materials for stair and deck railings and other ironwork. Call 785-443-3630.
---12/16---12/33---

Fully self contained hot tub. Moving trailer. Very handy. Make offer. 785-443-1339.
---12/11---12/16---

New cab cover for Bob Cat 773. \$150. Call 785-462-2152.
---12/11---12/16---

Home Gym - Purchased from Sears. Adjustable weights from 15-200 lbs. Butterfly attachment. \$250. 785-672-7155.
---12/11---12/16---

Yamaha Grand (53). Polished ebony, mint condition. Delivery and terms available Call Pianos Unlimited. 1-800-201-4551.
---12/2---12/21---

33 yards new carpet pad \$100, 200' concrete tack strip \$40, 7 gallon Behr enamel beige paint \$70. Call 785-462-2356 or 785-443-2690.
---11/25---12/15---

30" x 48" blackish table with 4 chairs \$100, bedside commode \$35, shower chair \$40. Call 785-462-2356 or 785-443-2690.
---11/25---12/15---

Dental Hygienist adjustable chair. Make offer. 785-443-1765.
---8/5---TFN---

PETRO-LUBE Stopping Centers' Under New Management

All Positions Available
Apply in person
690 W. Horton
Colby, KS. 67701

Fun People Great Benefits
Medical, Dental, Matching 401K, Promotions Within, Professional Training Programs and More. Get in on the Ground Floor of this Nationwide Company with 64 locations and over 600 employees.

We are committed to a **DRUG FREE WORKPLACE.**
All new hires must pass an evasion proof Urine Analysis test.

Misc. for Sale

Wayne 0.5HP Shallow well pump. Century-90Amp., 120V wire feed welder with cart. 4-30"x6" aluminum irrigation or mainlines. Call 785-953-0806.
---3/4---TFN---

Vehicles for Sale

1990 Toyota Tacoma regular cab, 2 WD, 4 cylinder, automatic, 21K miles, wtny \$14,000. 785-628-8726.
---12/16---12/31---

Seed and Feed

Good grass hay. 30 round bales, side oats, and western wheat. No rain. 785-672-3306.
---12/16---12/28---

Certified Agri-Pro, Post Rock, Tam III and certified Fuller. Call Paul Nauer 785-678-8083 or 785-678-2339.
---9/28---TFN---

You know who you are. Please call the black and yellow fire-suit. Late evenings 785-673-8381 or email rsallc09@gmail.com. I owe you an explanation, an apology and dinner.
---12/14---12/18---

Sexy, beautiful, good-looking, faithful, affectionate and good values. Lady, age 41, 5'3", brown hair and eyes. Seeks gentleman with good values, easy-going, for romance, dating and friendship, love and possibly marriage-minded. Please send letter, photo and phone number to PO Box 171, Goodland, KS 67735. Will answer all letters!
---12/9---12/21---

Services

Tired of leaks every time it rains? Frustrated with the bucket brigade? Murray Roofing. 780 E. 4th, Colby. 1-800-794-3204 or 785-462-6908.
---3/18---TFN---

Free Estimates on all kinds of roofs. Murray Roofing. 780 E. 4th, Colby. 1-800-794-3204 or 785-462-6908.
---3/18---TFN---

Free Estimates on vinyl siding, windows, doors, and insulation. Murray Construction. 780 E. 4th, Colby. 1-800-794-3204 or 785-462-6908.
---3/18---TFN---

"ASSIST-UR-SALE." Have items in storage or a vehicle you want to sell? We have a 90% sell rate and we can sell your items for a minimal 10% commission. References available. No charge to you unless your item sells. Call Duane at 785-443-1177.
---12/11---TFN---

PBG THE PEPSI BOTTLING GROUP
The Pepsi Bottling Group of Colby, KS has an **IMMEDIATE** opening for:
Delivery - Relief Route Sales Driver
CDL A or the ability to obtain one in 30 days is required. (Apply to Delivery - Route Sales)
Please review the detailed job descriptions, requirements, and apply online TODAY at www.pbgcareers.com
PBG is an Equal Opportunity Employer

Pets/Supplies

For Christmas - Black and yellow Labrador Retriever puppies. Ready December 23rd. Mike Schultz, Brewster. 785-462-1447.
---12/16---12/28---

German Short-hair Pointer puppies. Born December 12th. Reserve yours today! Mike Schultz, Brewster. 785-462-1447.
---12/16---12/28---

Dachshund puppies. Ready before Christmas. Females black and tan or chocolate. 785-734-2761.
---12/16---12/21---

Registered White Pomeranian puppies. Ready for Christmas. Call 785-754-2225.
---12/9---12/30---

Give Away

FREE lab puppies! Call 785-443-1877.
---12/16---TFN---

Free kittens to excellent homes! Call 785-462-6388. Doggone critters pet grooming.
---12/11---12/16---

Garage Sales

Great Gifts Garage Sale: Jewelry, toys, video camera, Harley boots, clothes and household miscellaneous. December 17-23. 10 a.m. - 5 p.m.. Closed Sundays. 980 W. 2nd St. 785-460-4248.
---12/16---12/21---

Help Wanted SURVEILLANCE OFFICER

based out of Colby: To complete surveillance contacts on offenders that are on Community Corrections. Officer will be required to do late night checks in the offender's homes. Drug and alcohol testing of offenders will also be required. Employment consists of up to 20 hours per week. \$12.00/hr, vehicle provided. Must submit to a criminal background check and pass drug test.

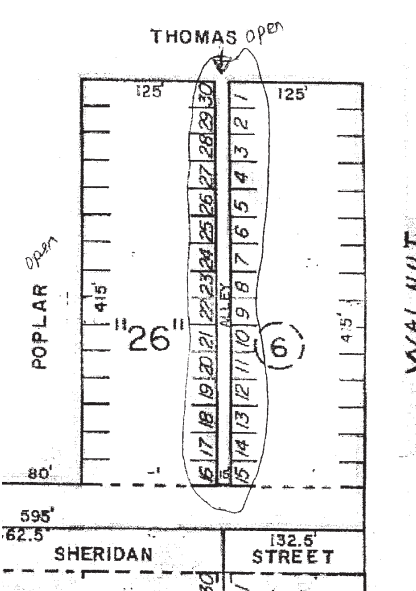
Send resume to:
NWKCC,
1011 Fort Street
Hays, KS 67601
Equal Opportunity Employer

FAX MACHINE SERVICE

available at
The Colby Free Press
\$3.00
FIRST PAGE
\$1.00
each additional page
Incoming pages or outgoing
CALL 462-3963
FOR DETAILS
or FAX US AT
462-7749

Public Notice

Notice is hereby given a petition has been filed with the Gem City Council by Denny P. and Traci L. Nieman of Gem, Kansas, praying for the vacation of the alley in Block 6 located between Sheridan and Thomas streets, lying West of Walnut Street and East of Poplar Street in the original city of Gem, Kansas.



Notice is hereby given that a public hearing shall be held on December 28, 2009 at 8:00 p.m. in the Gem Community Building, at 415 Elm Street, at which time the Gem City Council may approve or disapprove the request for the vacating of said Alley.

Dated this 27th day of November, 2009.

Helen M. Poland, Gem City Clerk

(Published in the Colby Free Press on Monday, December 14, 21, 2009)

REQUEST FOR SEALED BIDS ON KANSAS TAX CREDITS

Thomas County has been issued Kansas Tax Credits by the Kansas State Historical Society acknowledging completion of a qualified rehabilitation project on a qualified historic structure in the amount of \$23,794.88. Bidders may select from corporate income tax, privilege tax, individual income tax and fiduciary income tax, as well as a transfer of tax credit from partnerships to partners and/or members of a limited liability corporation (LLC). Any further information regarding tax credits should be directed to your tax accountant. If you are interested in bidding on these tax credits, please submit your bid in a "SEALED ENVELOPE" to the Thomas County Commissioners at 300 N. Court Ave., Colby, KS 67701. Clearly mark the outside of your envelope "TAX CREDIT SEALED BID". Bids must be received by 10:00 a.m. on Thursday, December 31, 2009. The Thomas County Board of Commissioners reserves the right to reject any or all bids.

(Published in the Colby Free Press on December 18, 21, 23, 24, 28, 30, 2009)

COLBY COMMUNITY COLLEGE
Colby Community College is accepting applications for a **Title III Technician**. Responsible for technical support activity for the development of hybrid and on-line course delivery systems. Strong networking and Microsoft operating system background preferred. This is a Title III grant-funded job for 5 years. To apply, send application letter, resume and all post-secondary transcripts to Human Resources Director, Colby Community College, 1255 S. Range, Colby, KS 67701. Job to remain open until filled. Interviews will begin immediately.
Equal Opportunity Employer

HELP WANTED
Full-time Physical Therapist or Assistant in general out-patient clinic.
Send resume to:
270 N. Franklin, Ave
Colby, KS 67701
or phone:
785-462-8008
EOE

Use the Classifieds!

HELP WANTED
Tubbs & sons Ford Sales is currently accepting applications for full-time positions in its sales department. Excellent pay and benefits. Call 1-800-369-3673, or pick up an application at 810 S. Range Colby, Kansas. Tubbs & Sons Ford Sales is an EOE.
Tubbs & Sons Ford Sales
810 S. Range • 462-6746

COLBY COMMUNITY COLLEGE
Colby Community College is accepting applications for a **Title III Administrative Support** person. Responsible for support activities including assistance with project reporting requirements, maintaining schedules, minutes of project meetings, and facilitating communication channels among Title III project staff. This is a Title III grant-funded job for 5 years. To apply, send application letter, resume and all post-secondary transcripts to Human Resources Director, Colby Community College, 1255 S. Range, Colby, KS 67701. Job to remain open until filled. Interviews will begin immediately.
Equal Opportunity Employer

MOTOR ROUTE DELIVERY
Work Monday, Wednesday, Thursday and Friday...
2 to 2 1/2 hours each afternoon
\$25 sign on bonus after 3 months
Bonus for new subscribers
No two routes are the same
Stop in at 155 W. 5th Street
or Call Kathryn 785-462-3963

Save \$26 a month and lock in your price for **one year!**

DIRECTV SATELLITE TELEVISION

NOW GET OVER 150 CHANNELS

\$29.99 FOR ONLY \$55.99 for 12 months The CHOICE® package

local channels included: CBS, NBC, FOX, PBS, CW, and many more of your favorite independent channels in select markets.

And many more!

Switch from cable to DIRECTV! **1-888-327-9062**

Credit card not required in MA and PA. Eligibility for local channels based on service address. *BILL CREDIT/PROGRAMMING OFFER: Free SHOWTIME for 3 months, a value of \$39.97. Free Starz and SHOWTIME for 3 months, a value of \$72. LIMIT ONE PROGRAMMING OFFER PER ACCOUNT. Featured package names and prices: CHOICE \$55.99/mo., CHOICE XTRA \$60.99/mo. In order to receive full \$26 credit, customer must submit rebate form online and register account on directv.com prior to rebate redemption. Requires valid email address and must agree to receive emails. Upon DIRECTV System activation, customer will receive rebate instructions (included in customer's first DIRECTV bill, a separate mailing or, in the state of New York, from retailer) and must comply with the terms on the instructions. Rebate begins 6-8 weeks after receipt of online redemption, or 8-12 weeks for mail-in redemption. Account must be in "good standing," as determined by DIRECTV in its sole discretion, to remain eligible. DIRECTV in its sole discretion, may suspend, terminate, or discontinue service for non-payment, incomplete, misdirected or postage-due mail. IF BY THE END OF THE PROMOTIONAL PERIOD(S) CUSTOMER DOES NOT CONTACT DIRECTV TO CHANGE SERVICE, THEN ALL SERVICES WILL AUTOMATICALLY CONTINUE AT THE THEN-PREVAILING RATES, INCLUDING THE \$5/MO. LEASE FEE FOR THE 2ND AND EACH ADDITIONAL RECEIVER. In certain markets, programming/pricing may vary. Package pricing at directv.com/packages. DIRECTV System has a feature that restricts access to channels. LIMIT ONE BILL CREDIT PER DIRECTV ACCOUNT. FAILURE TO ACTIVATE ALL OF THE DIRECTV SYSTEM EQUIPMENT IN ACCORDANCE WITH THE EQUIPMENT LEASE ADDENDUM MAY RESULT IN A CHARGE OF \$150 PER RECEIVER NOT ACTIVATED. IF YOU FAIL TO MAINTAIN YOUR PROGRAMMING, DIRECTV MAY CHARGE A PRORATED FEE OF \$40. RECEIVERS ARE AT ALL TIMES PROPERTY OF DIRECTV AND MUST BE RETURNED UPON CANCELLATION OF SERVICE, OR ADDITIONAL FEES APPLY. VISIT directv.com OR CALL 1-800-DIRECTV FOR DETAILS. Programming, pricing, terms and conditions subject to change at any time. Pricing residential. Taxes not included. Receipt of DIRECTV programming is subject to the DIRECTV Customer Agreement; copy provided at directv.com/legal and in your first bill. Starz and related channels and service marks are the property of Starz Entertainment Group, LLC. Showtime and related marks are registered trademarks of Showtime Networks Inc., a CBS Company. ©2009 DIRECTV, Inc. DIRECTV and the Cyclone Design Logo, CHOICE XTRA and CHOICE are trademarks of DIRECTV, Inc. All other trademarks and service marks are the property of their respective owners.