

To place your classified ad, mail (155 W. Fifth), fax (785-462-7749), phone (785-462-3963), or stop by our office at 155 W. Fifth

Real Estate

Real Estate

Real Estate

HomeLand REALTY AUCTION



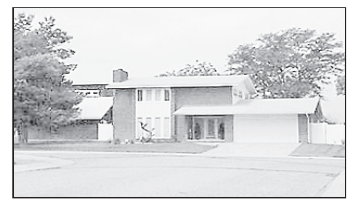
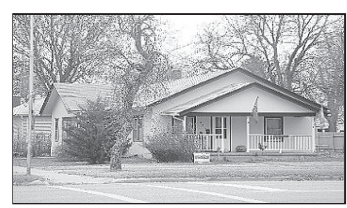
665 N Mission \$59,900
2-3 bedrooms, 2 baths, spacious living & dining area plus a family room all on one level. Master bdrm has private bath w/whirlpool tub. Fully equipped kitchen.

620 W 4th \$72,000
Beautiful oak wood floors, oak columns separating the formal dining & living room. Main floor laundry, large master suite, partially finished basement with a family room, bedroom & bath. Kids can walk to school.

1818 Harvey Ct.
4 bdrm. 2.5 bath with a true master suite & walk-in closet. Full finished basement. Detached building has a finished loft. Has a deck, patio, sprinklers & more.

995 S. Range \$75,000
One level brick home with 2 bedrooms & 2 full baths plus a spacious 2 car garage. Located on a large corner lot. This new price offers a great buying opportunity!!

1280 E 8th \$165,000
5 bdrm, 3 bath brick home with full finished basement and double car garage. Main floor utility. Wrapped windows, gables and eaves. A real treasure.



Inventory is low - WE WANT YOUR HOME. Give us a call and let our team of experienced realtors provide you with a free market analysis as well as a personal marketing plan. HomeLand - A TEAM WORKING FOR YOU!

| | | | |
|------------------------|----------|-------------------------|--------------|
| 201 Penn Jennings | \$10,000 | 460 W. 4 th | CONTRACT |
| 615 Longview-Oakley | "SOLD" | 905 S. Range | \$102,000 |
| 130 Main-Rexford | \$45,000 | 1473 Pioneer Dr. | \$117,500 |
| 721 Smokyhill-Oakley | "SOLD" | 880 Thompson | \$129,000 |
| 665 N. Mission | \$59,900 | 310 S. Garfield | \$135,000 |
| 620 W. 4 th | \$72,000 | 1280 E. 8 th | \$165,000 |
| 995 S. Range | \$75,000 | 1818 Harvey | "Unique" |
| 255 N. Garfield | \$98,500 | 1675 W 4 th | "Commercial" |

Join the Sellers that list with HomeLand Realty & Auction Your Home, along with many other listings, will be viewed nationally.
Pat Sloan 460-7495 Marilyn Meyer 462-2703
Rock L. Bedore 462-6930 Jerry Wycoff 672-3763
speak to us at homelandre@hotmail.com

Stock Realty & Auction Featured Property

New Listing

Rural Setting



• Charm throughout
• 3 bedrooms, 2 baths
655 W. Cedar \$68,500



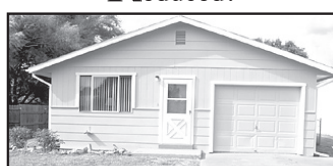
• Ready for horses
• 4 bedrooms, 3 baths
321 N. 3rd. Menlo, KS

Brick Home

Reduced!



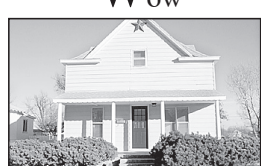
• One owner
• Spacious floor plan
785 S. Lincoln \$126,500



• Lots of new
• 3 bedrooms and garage
325 E. Pine \$56,900

"Wow"

STARTER or Retirement



• Traditional charmer
• Open rooms and large
125 N. Garfield \$94,500



• Detached garage/shop
• Sprinklers
960 E. 9th \$59,500

Cabin "Feel"

Brewster, KS



• A must see
• Great location
915 Mentlick \$73,500



• Attractive Kitchen
• Offer wanted
402 Nebraska \$37,500

WE WANT TO LIST YOUR HOME! CALL MOLLY

MOLLY J. OLIVER
Residential Specialist
462-6133 (res.)

STOCK REALTY & AUCTION CO.
390 N. Franklin, Ste. 100, Colby, KS 67701
www.stockrealtyanduction.com
785-460-SOLD (7653)
QUALITY LAND BROKERS & AUCTIONEERS

LAND & COMMERCIAL Opportunities

the Promise of Land.....

Atwood

Main street Commercial Building \$45,000. New paint, New carpet. 105 N. 4th

Downtown Building \$66,500. Plenty of Room/Offices. Ready to move into. 119 S. 4th.

Storage-Mfging Building \$85,000. 8,600 sq. ft. Great Rental Property. 509 N. 5th

Colby

Potential Meeting/Convention Center \$45,000. 2x100 seat theaters. Use your imagination. 355N. Franklin.

Great Office Facility \$55,000. 2 offices, conference room, lobby. 195 N. Franklin. UNDER CONTRACT.

Handy Office Building. \$29,900. Downtown, move in ready. 165 W. 3rd. UNDER CONTRACT.

WE WANT TO SELL YOUR LAND!

If you are seriously considering selling your land, but have questions or concerns, contact Terry or Molly for a *no obligation market analyses*.

Stock's Full Team of "YELLOW SHIRTS" & Experience want to handle your next Auction...
Call the "WE SELL" TEAM.

Check Our Website
www.stockrealtyanduction.com

Terry Stover: 785-626-2082 Molly Oliver: 785-462-5203
Ron Stock: 402-649-3705 Mark Stock: 402-276-2077

STOCK REALTY & AUCTION CO.
390 N. Franklin, Ste. 100, Colby, KS 67701
www.stockrealtyanduction.com
785-460-SOLD (7653)

QUALITY LAND BROKERS & AUCTIONEERS



BUYERS ARE CALLING! WE NEED LAND LISTINGS

Call Molly Oliver
785-460-7653
785-462-5203

I Want To Go To Work For You!

Let's Sit Down and Visit About Your Personal Market Plan and Market Value of YOUR LAND!

Now Is the Time To Sell!!

MOLLY J. OLIVER
Residential Specialist
462-6133 (res.)



STOCK REALTY & AUCTION CO.
390 N. Franklin, Ste. 100, Colby, KS 67701
www.stockrealtyanduction.com
785-460-SOLD (7653)

QUALITY LAND BROKERS & AUCTIONEERS

WHY SOME PEOPLE THINK CELIA CRUZ IS TOM'S MOTHER.

Kids don't get enough art these days. For Ten Simple Ways to get more art in kids' lives, visit AmericansForTheArts.org

ART.ASK.FOR.MORE.
AMERICANS.FOR.THE.ARTS.ORG

Ad Council AMERICANS FOR THE ARTS NAMM Foundation

\$\$\$
If you're looking to:
Buy, Sell, or Trade,
start with
The Colby Free Press CLASSIFIEDS
785-462-3963

REDUCE REUSE RECYCLE

FARM & RANCH REALTY, INC.

1977 - 2010

30+

YEARS OF EXPERIENCE EXPERTISE EXCELLENCE



1420 W. 4th - P.O. BOX 947
COLBY, KS 67701
785-462-3904

DONALD L. HAZLETT, Broker



DON HAZLETT

www.farmandranchrealty.com

WE INVITE YOU TO TALK TO ONE OF OUR REAL ESTATE PROFESSIONALS!

Naomi Ward • Steve Hazlett • Ron Evans • Ed Currier • Neal Mann • Mike Bailey • Scotty Legere

AUCTION SCHEDULE

- 1/19/10 - 7,100 acre grass ranch North of Crawford, NE on the South Dakota border. Selling in 2 tracts and combination for Corman Ranches & Farms, Inc.
- 1/26/10 - 800 ac Prowers Co, Colo & Hamilton Co, KS CRP, SE of Holly, CO on the Kansas/Colorado border - 2 individual tracts
- 3/27/10 - Annual Spring Consignment Auction - East Lot

REAL ESTATE FOR SALE

- GRAHAM** - 4.6 ac close to the Solomon River - W of Hill City, includes a modern home, 2-car garage, livestock shed and scenic views - **JUST LISTED!**
- GOVE** - 160 ac expired CRP, NE/4 of 17-14-31, SE of Oakley
- WALLACE** - 510 ac native grassland w/3 livestock wells - NW of Sharon Springs, KS
- WICHITA** - 320 ac CRP, ann pmt \$11,510 thru 9/30/2010, SE of Leoti - NE/4 & SW/4 of 11-19-36

COMMERCIAL LISTINGS



1921 S. Range - \$199,500

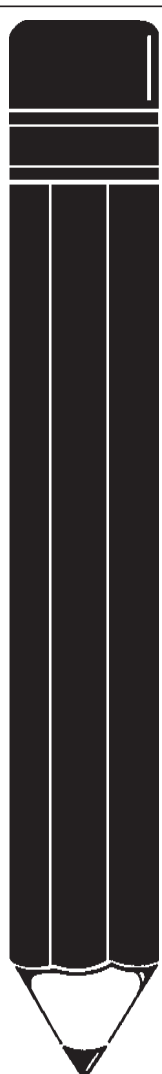
8-UNIT APARTMENT COMPLEX -
5th St & Martin
\$40,000

*CHECK OUR WEB SITE FOR ADDITIONAL PRIVATE TREATY LISTINGS!

"When you list with Farm & Ranch, it's as good as SOLD!"



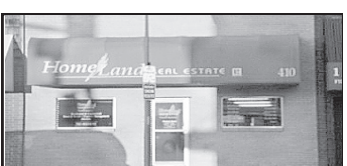
320 ACRES THOMAS COUNTY, KS IRRIGATED CROPLAND
E/2 of 18-10-32
Located South of Mingo
2 pivots, 2 wells,
immediate possession



GET RIGHT TO THE POINT!
WITH A **CLASSIFIED AD!!**
Call 462-3963 for rates.

HomeLand Realty & Auction

NEW Beautiful Ranch Style home located 15 miles South of Brewster, KS with full basement on 5.7 acres. (4 garage stalls) \$165,000.
NEW 640 Acres Logan Co cropland & grass SW of Winona, KS. Imm. Poss. (All 2010 wheat and FSA payments to Buyer) \$750/acre.
NEW 320 Acres Thomas Co irrigated NW of Rexford, KS. \$2,740/Acre.
NEW 320 ACRES GOVE COUNTY irrigated, dryland & grass located 3 miles South of Campus, KS. (SOLD)
PRICE REDUCED - 160 ACRES THOMAS CO Cropland located 1 1/2 miles West of Menlo, KS. Immediate Possession. \$1,400/Acre.
PRICE REDUCED - 160 ACRES THOMAS CO Grassland located 1 1/2 miles West of Menlo, KS. Immediate Possession. \$750/Acre.
140 ACRES THOMAS CO cropland with improvements & remodeled house Rexford, KS. 1/3 wheat to Buyer. (UNDER CONTRACT)
EXCELLENT BUILDING LOT located on Coltonwood Drive in Colby, KS. Beautiful mature pine trees with a prime location. \$39,000.
320 ACRES THOMAS CO. grassland 4 miles West 1/2 North. of Oakley, KS Immediate Possession. \$625/acre.
148 ACRES RAWLINS COUNTY Cropland and grass 4 1/2 miles North of Ludell, KS. Cash rents going to Buyer. \$811/acre. Call Pat 785-443-3261.
400 ACRES LOGAN COUNTY grass & cropland w/improvements located at Page City, KS. Beautiful 2 story home, barn, cattle working facility, Quonset, grain storage and cattle feeding pens. **PRICE REDUCED !!!**
480 ACRES LOGAN COUNTY sprinkler irrigated land located 1 mile North of Page City, KS. 3 wells & 3 sprinklers. (For sale or lease) \$2,150/acre.
Call Rock L. Bedore 785-443-1653



410 N. FRANKLIN
Ideal office location, low maintenance brick exterior, 1 year old roof & new sewer line. Interior has open floor plan, private office, break room as well as a conference room.



1675 W 4th Colby
6,000 sq. ft office/retail building plus 4,500 sq. ft. warehouse with dock. High traffic area. Excellent for investor.

COMMERCIAL DEVELOPMENT 6.7 acres adjacent to Wal-Mart with I-70 frontage. Located in Colby, Kansas. Call Rock.
INDUSTRIAL LOT in Colby's Industrial Area just off of I-70 Exit 53. Great building location. \$47,000. Call Rock.
LOCATE to Colby's fastest growing area. I-70 frontage, 2-6 acre lots. Join Colby Petro, Colby Implement and others. Call Marilyn.
RESIDENTIAL LOTS in El Chaparral. Has established trees and a domestic water well. Wonderful building site. \$23,000. Call Marilyn.
365 N. FRANKLIN Ideal for retail business or larger office. Interior can be partitioned for great open retail space, private offices & storage.

HomeLand REALTY AUCTION
"Western Hospitality"
410 N. Franklin
785-462-8255

Agents
Rock L. Bedore 785-443-1653
Jerry Wycoff 785-672-0429
Marilyn Meyer 785-462-2703
Pat Sloan 785-460-7495
www.colbyhomeland.com