

To place your classified ad, mail (155 W. Fifth), fax (785-462-7749), phone (785-462-3963), or stop by our office at 155 W. Fifth

Real Estate

Real Estate

Real Estate



"Western Hospitality"
www.colbyhomeland.com
410 N. Franklin
785-462-8255



"NEW LISTING"
1005 Court Terrace \$77,000
4 bdrm. 2 bath split-level w/deck off the kitchen. Back yard w/vinyl fence, storage shed, & sprinkler system. Exterior steel siding. Call Marilyn today to schedule an appointment!!!!



765 S. Range \$76,500
Ideal for a young family featuring 4 bdrms. 3 baths. Main floor laundry. Has 20 x 30 detached garage & shop w/plenty of room to expand. Give Pat a call today!!!!



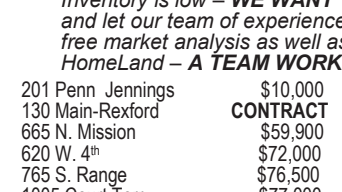
1280 E 8th \$165,000
5 bdrm, 3 bath brick home with full finished basement and double car garage. Main floor utility. Wrapped windows, gables and eaves. A real treasure. Give Marilyn a call!!!!



620 W 4th \$72,000
Beautiful oak wood floors, oak columns separating the formal dining & living room. Main floor laundry, large master suite, partially finished basement with a family room, bedroom & bath. Kids can walk to school. Call Marilyn.



1818 Harvey Ct.
4 bdrm. 2.5 bath with a true master suite & walk-in closet. Full finished basement. Detached building has a finished loft. Enjoy the deck, patio, sprinklers & more. Give Pat a call TODAY!!!



880 Thompson \$129,000
Custom designed brick home with spacious rooms, foyer & hallway. Full finished basement, great for the kids or could be rented out. 2 car attached garage. Take a look today.

Inventory is low - WE WANT YOUR HOME. Give us a call and let our team of experienced realtors provide you with a free market analysis as well as a personal marketing plan. HomeLand - A TEAM WORKING FOR YOU!

201 Penn Jennings	\$10,000	460 W. 4th	CONTRACT
130 Main-Rexford	CONTRACT	905 S. Range	CONTRACT
665 N. Mission	\$59,900	1473 Pioneer Dr.	\$117,500
620 W. 4th	\$72,000	1395 Lue Dr.	\$122,500
765 S. Range	\$76,500	880 Thompson	\$129,000
1005 Court Terr.	\$77,000	310 S. Garfield	\$135,000
665 W. 6th	\$78,000	1280 E. 8th	\$165,000
995 S. Range	SOLD	194 Co Rd. 3	\$165,000
465 Lawrence Dr.	\$81,500	1818 Harvey	"Unique"
255 N. Garfield	CONTRACT	2870 N. Range	CONTRACT

Join the Sellers that list with HomeLand Realty & Auction
Your Home, along with many other listings, will be viewed nationally.
Pat Sloan 460-7495 Marilyn Meyer 462-2703
Rock L. Bedore 462-6930 Jerry Wycoff 672-3763
speak to us at homelandre@hotmail.com

LAND & COMMERCIAL Opportunities

the Promise of Land.....

CRP - Cheyenne Co. 162 Acres NW4 6-1-41.
NEW CRP - Wallace Co. 148 Acres NE4 16-13-38. Comes out of program 9/10
NEW - 640 Acres Irrigated - Grant Co. Land NE 1/4 2-27-35, N 1/2 1-27-35 Kearney Co. Land S.W. 1/4 36-26-35. Priced to Sell!
NEW GRASS AND FARMLAND - Wallace Co. 1440 Acres grass, 240 Acres farm ground under one fence. Nice unit!
FARMLAND, GRASS, BOTTOMLAND- Sheridan Co. 316 Acres N. of Grinnell. Nice improvements.

WE WANT TO SELL YOUR LAND!
If you are seriously considering selling your land, but have questions or concerns, contact Terry or Molly for a *no obligation market analyses*.
Stock's Full Team of "YELLOW SHIRTS" & Experience want to handle your next Auction...
Call the "WE SELL" TEAM.

Check Our Website
www.stockrealityandauktion.com
Terry Stover: 785-626-2082 Molly Oliver: 785-462-5203
Ron Stock: 402-649-3705 Mark Stock: 402-276-2077

STOCK REALTY & AUCTION CO.
390 N. Franklin, Ste. 100, Colby, KS 67701
www.stockrealityandauktion.com
785-460-SOLD (7653)
QUALITY LAND BROKERS & AUCTIONEERS

MOLLY'S VALENTINE DATE NIGHT

Molly wants to give you and Your Valentine a special Valentines's Date Night!



- ♥ Dinner Out for 2
- ♥ Flowers
- ♥ Candy

Come by the office or mail in a registration with your name, phone #, and an explanation why your valentine is so special.

You can mail registration and note to:
Stock Realty,
Attn: Valentine Date Night,
390 N. Franklin Ste 100
Colby, KS 67701

We will draw from the registrations for the lucky winner!

STOCK REALTY & AUCTION CO.
"WE SELL" Land Brokers and Auctioneers

Stock Realty & Auction

Featured Property



Just Listed
• TAKE A LOOK
• 4 - 5 Bedrooms, 2 baths
1018 Ct. Terrace \$79,900



Full of "WOW"
• So PERFECT
• 5 bedrooms, 3 baths
1335 Lue Drive



Reduced Price
• One-Owner Home
• Over 3,000 sq. ft.
785 S. Lincoln \$122,000



Personality!
• Beautiful Home
• Fantastic Deck
450W. 5th \$115,000



Menlo, KS
• Great Home
• Perfect for Horses
321 N. 3rd \$84,500



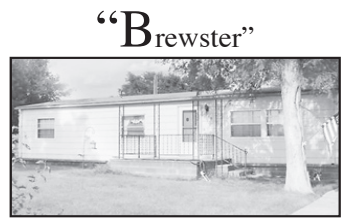
MOLLY J. OLIVER
Residential Specialist
462-6133 (res.)



Just Listed
• 5 bedrooms, 2 baths
• Walk-out basement
520 Cherokee \$86,500



"Lovely"
• Brick 4 bedroom
• Lovely landscaping
1035 N. Brookside \$117,000



"Brewster"
• 3 bedroom home
• Family Room w/fireplace
309 Rock Island \$49,900



So Cute!
• Move-in Ready
• Lots and lots of extras
655 W. Cedar \$68,500

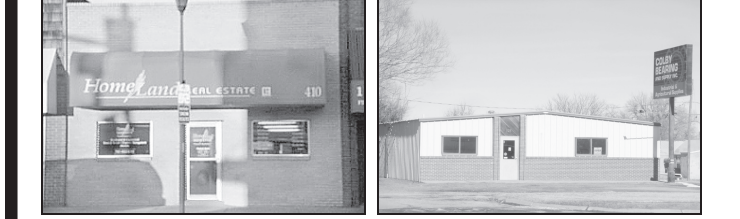


Rural Setting
• Attractive and Affordable
• Lots of land and shop
414 G \$59,000

STOCK REALTY & AUCTION CO.
390 N. Franklin, Ste. 100, Colby, KS 67701
www.stockrealityandauktion.com
785-460-SOLD (7653)
QUALITY LAND BROKERS & AUCTIONEERS

Homeland Realty & Auction

NEW-160 Ac. Logan Co. cropland & grass loc. SW of McAllister \$750/ac.
Beautiful Ranch Style home located 15 miles South of Brewster, KS with full basement on 5.7 acres. 5 bdrm 3 bath (4 garage stalls) \$165,000.
320 Acres Thomas Co irrigated NW of Rexford, KS. \$2,740/Acre.
160 AC TH CO cropland located 1 1/2 miles W of Menlo, KS. \$1,400/Ac.
160 AC TH CO grassland located 1 1/2 miles W of Menlo, KS. \$750/Ac.
10 ACRES THOMAS CO cropland with 1,700 sq. ft. remodeled house Rexford, KS. All 2010 wheat to Buyer. \$98,500.
EXCELLENT BUILDING LOT located on Cottonwood Drive in Colby, KS. Beautiful mature pine trees with a prime location. \$39,000.
900 ACRES LOGAN COUNTY grass & cropland w/improvements located at Page City, KS. Beautiful 2 story home, barn, cattle working facility, quonset, grain storage and cattle feeding pens. \$990,000.
480 ACRES LOGAN COUNTY sprinkler irrigated land located 1 mi North of Page City, KS. 3 wells & 3 sprinklers. Immediate Poss. \$2,150/acre.
Call Rock L. Bedore 785-443-1653
148 ACRES RAWLINS COUNTY Cropland and grass 4 1/2 miles North of Ludell, KS. Cash rents going to Buyer. \$811/acre. Call Pat 785-443-3261.
NEW-3.3 Acres with 7,215 sq. ft. building, close to Goodland Airport 580 E. Armory Rd, Goodland, KS Great warehouse & office space! \$88,500.
NEW-2.2 acres w/10,786 sq. ft. building. 1/4 mile from I-70 @ 2886 Rd 64 Edson, KS. Ideal warehouse or manufacturing building, \$150,000.
NEW-160 ac. NW/4 12-8-42 dryland. UNDER CONTRACT.
Call Tom Harrison 785-443-0136



410 N. Franklin ideal office location, low maint. brick exterior, 1 yr. old roof & new sewer line. Open floor plan. Call Rock L. Bedore 785-443-1653.
525 E. 4th - Very well established business located in Colby, Kansas. Great clientele list.
COMMERCIAL DEVELOPMENT 6.7 acres adjacent to Wal-Mart with I-70 frontage. Located in Colby, Kansas. Call Rock L. Bedore 785-443-1653.
INDUSTRIAL LOT in Colby's Industrial Area just off of I-70 Exit 53. Great building location. \$47,000. Call Rock L. Bedore 785-443-1653.
LOCATE to Colby's fastest growing area. I-70 frontage, 2-6 acre lots. Join Colby Petro, Colby Implement and others. Call Marilyn Meyer 785-462-2703.
RESIDENTIAL LOTS in El Chaparral. Has established trees and a domestic water well. Wonderful building site. \$23,000. Call Marilyn Meyer 785-462-2703.
1675 W. 4th Colby 6,000 sq. ft. office/retail building plus 4,500 sq. ft. warehouse with dock. Move-in ready. New Reduced Price!! Call Pat Sloan 785-460-7495.

Agents
Rock L. Bedore 785-443-1653
Jerry Wycoff 785-672-0429
Marilyn Meyer 785-462-2703
Pat Sloan 785-460-7495
www.colbyhomeland.com



Work Monday, Wednesday, Thursday and Friday...
1 to 2 1/2 hours each afternoon

\$25 sign on bonus after 3 months
Bonus for new subscribers
No 2 routes are the same
Work at your own pace

Stop in at 155 W. 5th Street
or Call Kathryn 785-462-3963

Just Listed



1018 Court Terrace
Great Value! 4-5 bedroom, 2 bath home with full basement and 1 car garage. Big Kitchen. Call Molly 462-5203

MOLLY J. OLIVER
460-SOLD (7653)
462-6133 (Res.)
STOCK REALTY & AUCTION CO.
390 N. Franklin, Colby, KS

FARM & RANCH REALTY, INC.

1977 - 2010
30+ YEARS OF EXPERIENCE EXPERTISE EXCELLENCE
1420 W. 4th - P.O. BOX 947
COLBY, KS 67701
785-462-3904
DONALD L. HAZLETT, Broker
www.farmandranchrealty.com
DON HAZLETT

WE INVITE YOU TO TALK TO ONE OF OUR REAL ESTATE PROFESSIONALS!

Naomi Ward • Steve Hazlett • Ron Evans • Ed Currier • Neal Mann • Mike Bailey • Scotty Legere

320 ACRES IRRIGATED CROPLAND
LAND ABSOLUTE
THOMAS COUNTY, KS
SELLERS: Frank A. & Naomi C. Flipse Trusts
Tues, March 2, 2010 @ 10:30 A.M., CST

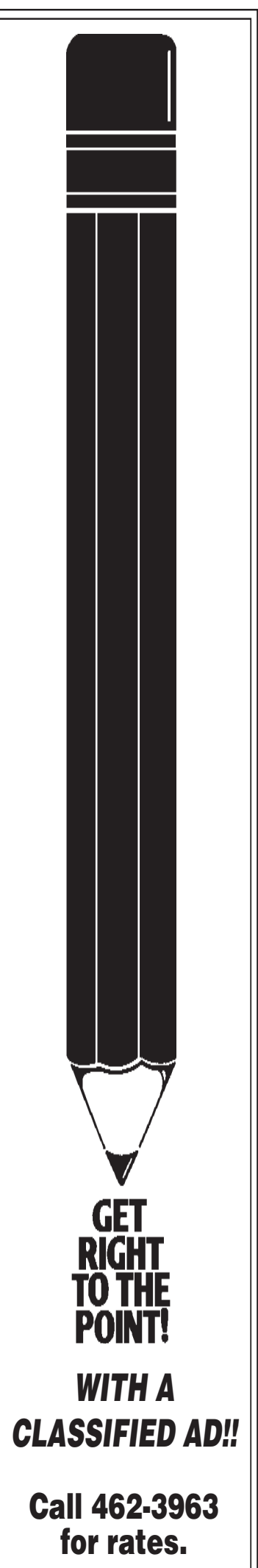
AUCTION LOCATION:
City Limits Convention Center, Colby
E/2 OF 18-10-32
The land is located in a very productive area of Thomas County, Kansas.
Terms of this sale are "buyer friendly" as Buyer will receive IMMEDIATE POSSESSION to prepare the land for Spring planting of corn - grain sorghum - sunflowers.
All irrigation equipment and mineral rights will go to the Buyer! Call Ron Evans for a tour TODAY!
There are two irrigation water wells on this property. Water Right File #10774 is permitted for 404 AF at 720 GPM, and Water Right File # 27946 is permitted for 132 AF at 375 GPM.



MARCH 16, 2010
1,320+ ACRES CROPLAND
1,320+ acres Rooks County cropland & farm machinery
Palco/Plainville area selling in 9 tracts & combos for Charlotte Desbien Estate.
A short line of machinery will sell immediately after the land!

MARCH 27, 2010
SPRING CONSIGNMENT SALE
Call TODAY to get your items consigned early and included on the sale bill

*CHECK OUR WEB SITE FOR PRIVATE TREATY LISTINGS!
"When you list with Farm & Ranch, it's as good as SOLD!"



Call 462-3963 for rates.