

To place your classified ad, mail (155 W. Fifth), fax (785-462-7749), phone (785-462-3963), or stop by our office at 155 W. Fifth

Real Estate

Here is a **RARE OPPORTUNITY** to purchase a



Complete Thomas County Farm

358 IRRIGATED ACRES

- 3 - 1997 Valley Pivots
- High efficiency pump
- 1,380 gpm. well (when original Appropriation)

222 DRYLAND ACRES

375 GRASS ACRES

- Good livestock facilities
- Good water
- Good fences

110,000 BUSHEL GRAIN STORAGE

OUTSTANDING IMPROVEMENTS

- Beautiful home
- Heated 2 car Morton garage
- Heat and air conditioned 40 x 100 shop
- 60 x 120 machinery shed
- And much, much more!

• Come by office to pick up a Booklet on this farm.

You may never again see a farm like this

sell in your life-time!

Check Our Website

www.stockrealityandauktion.com

Terry Stover: 785-626-2082 Molly Oliver: 785-462-5203

STOCK REALTY & AUCTION CO.
390 N. Franklin, Ste. 100, Colby, KS 67701
www.stockrealityandauktion.com
785-460-SOLD (7653)

QUALITY LAND BROKERS & AUCTIONEERS

Real Estate

OPEN HOUSE

Sunday, March 21st
1:00 - 2:00 p.m.



1035 N. Brookside
"Lower Price"



520 Cherokee

"Walk-out basement"

www.stockrealityandauktion.com

460-SOLD (7653)

462-6133 (Res.)

STOCK REALTY & AUCTION CO.

390 N. Franklin

Call Lisa for more information

Office: 1-800-286-8268

Cellular: 785-656-0387

Email: lisakrull@deanelner.com

Reach over 17,000 homes weekly with our Colby Free Press/Country Advocate combo ads

NEW LISTING!



975 E 9th \$124,900

3 bdrm, 3 bath brick home on a corner lot with a large living room & family room. Over 1800 sq ft on the main level with a partial basement that has been partially finished. Main floor interior has recently been repainted and new carpet in 2008. Yard has underground sprinklers to make life easier for you. Call for appointment.



Call Marilyn Meyer 462-2703

HomeLand REALTY AUCTION
"Western Hospitality"
410 N. Franklin 462-8255
www.colbyhomeland.com

Real Estate

Dean Ellner Inc., Realtors®
25th & Vine Street, Box 536 Hays, Kansas 67601
Kelly Ellner Leiker, Managing Broker

OPEN HOUSE
Sunday, March 21st
1:00 PM - 2:30 PM

\$89,700



790 West 5th Street
Colby, Kansas

Hurry! Tax Credit Ends Soon!

- New Flooring & Paint
- Wonderful Character
- Home Warranty
- Priced Below County Appraisal
- Motivated Seller
- REALTOR Owned

Call Lisa for more information
Office: 1-800-286-8268
Cellular: 785-656-0387
Email: lisakrull@deanelner.com

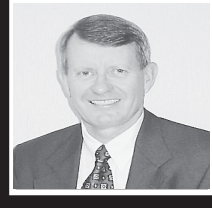


FARM & RANCH REALTY, INC.



1977 - 2010
30+
YEARS OF
EXPERIENCE
EXPERTISE
EXCELLENCE

1420 W. 4TH. - P.O. BO 947
COLBY, KS 67701
785-462-3904



DONALD L. HAZLETT, Broker

www.farmandranchrealty.com

Naomi Ward • Steve Hazlett • Ron Evans • Neal Mann • Ed Currier • Mike Bailey • Scotty Legere

FARM MACHINERY & EQUIPMENT

SELLERS:
WRIGHT &
CAMPBELL

ABSOLUTE AUCTION

TUES., MAR. 30, 2010 @10:30AM, MDT

AUCTION LOCATION: From I-70 exit 1 at Kanorado go North to Hwy 24, 1 mi W, then 1 block North to the Co-op lot in Kanorado. **SIGNS WILL BE POSTED!**



Selling will be 9 tractors, combine, grain cart, trucks, trailers, farm machinery & more!

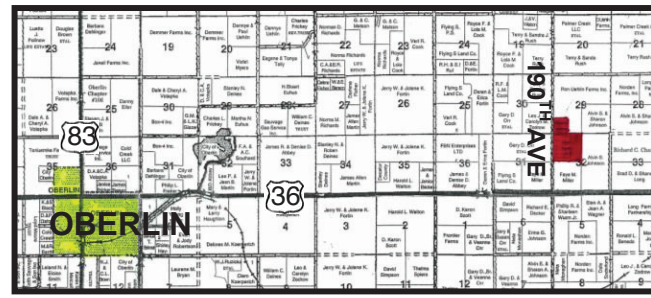
LAND ABSOLUTE AUCTION

200 ACRES CROPLAND & GRASS DECATUR COUNTY, KS

THUR., APRIL 1, 2010, @10:30 AM, CDT

AUCTION LOCATION: The Gateway in Oberlin

SELLER: Myrna Kelley Rev Trust



NW/4 of 32-2-27 & SW/4SW/4 of 29-2-27

THIS LAND WILL SELL IN 1 TRACT and is located 8 miles East and 1/2 mile North of Oberlin - Good location & good access!

Visit our website for a **VIRTUAL TOUR!**

AUCTION SCHEDULE

- 3/27/10 - Annual Spring Consignment - East Hwy 24
- 3/30/10 - Farm machinery for Wright & Campbell, Kanorado
- 4/01/10 - 200 acres of Decatur County cropland and grass for Myrna Kelley Revocable Trust
- 4/06/10 - Farm machinery - Steelsmith Estate - Hill City
- 4/07/10 - 920 acres of Graham Co cropland & lot w/trailer house - Hill City
- 4/16/10 - 140 ac cropland & grass 1 mi N of Park, NW/4 of 6-11-27 for the Robben Estate
- 4/27/10 - 7 qtrs CRP in Sherman, Greeley & Gove Counties, KS - selling in tracts
- 4/28/10 - 1,850 ac CRP in Morgan & Washington Counties, CO - selling in 8 tracts
- 5/12/10 - Farm Machinery for Mays Farm - North of Kit Carson, CO

REAL ESTATE & FARM MACHINERY AUCTIONS

SELLER: GARY STEELSMITH ESTATE

FARM MACHINERY & EQUIPMENT TUES., APRIL 6, 2010 @10:30 AM, CDT

MACHINERY AUCTION LOCATION: Tract 5 on East Hwy 24 in Hill City, KS. **SIGNS WILL BE POSTED!!**

LIVE ONLINE BIDDING - www.farmandranchrealty.com
Advance Registration required!



TRACTORS:•JD 8560, QR, 4 scv's, PTO, 3pt, QT, 4WD •JD 8640, QR, 3 scv's, PTO, 3pt, QT, 4WD •Case DC w/Farmhand F-11 loader, 1 remote, PTO, 2 pt•AC D19, 2 remotes, PTO, 2 pt
COMBINE & HEADERS:•96 JD 9600, Mauer bin ext, straw chopper, 2,222 sep hrs, 3,287 eng hrs•JD 893 corn head •JD 930F platform
TRUCKS & PICKUPS:•95 Freightliner, 10spd, CAT 3406 eng, sleeper•80 Ford F700, 5x2 w/16' Obeco steel B&H, 60" sides, cargo door, RO tarp•92 Ford F150 XLT, 4x4, crewcab•88 Chevy 1500, 4x4
TRAILERS:•03 Neville steel dbl hopper grain trl, RO tarp•02 Trail-Eze implement trl, hyd beaver tail•MD 32 header trl •Unverferth Roadrunner 36' header trl
FARM MACHINERY:•06 JD 1770 NT 24-row planter, CCS seed delivery, markers•A&L 47 grain cart, RO tarp, 1000 PTO•09 Hygrade 16' model 1600RS dirt grader•JD 7000 8-row planter•Krause disc •MF 6' model 65 rotary mower, pull-type•Hyd drill fill auger•Krause one-way•JD plow, 3pt, 4 bottom, model F145H
SHOP TOOLS, FUEL TANKS & MISC ITEMS:
•Hobart welder/generator•Puma air compressor w/Honda eng•Coleman Powermate 2500 120V generator•Sears 580321862 alt/gen•Century 230AC arc welder w/helmets•DeeZee 100 & 90 gal fuel tanks
•Hand tools **AND MANY MORE ITEMS TOO NUMEROUS TO LIST!!**

ABSOLUTE "MULTI-PARCEL" LAND AUCTION

920± ACRES CROPLAND & LOT W/TRAILER GRAHAM COUNTY, KANSAS

WEDNESDAY, APRIL 7, 2010 @10:30 AM, CDT

Auction Location: Cowboy Junction, Hill City, KS

Land will sell in 5 tracts and combinations of tracts

TRACT 1: E/2 OF 35-8-24, less N/2N2/NE/4

TRACT 2: E/2 OF 20-7-22

TRACT 3: NW/4 of 19-6-22

TRACT 4: NW/4 of 35-6-24

TRACT 5: Lot w/trailer house in Hill City

Immediate possession - 100% of the 2010 FSA payments to the Buyer(s) - Don't miss this sale!

Visit our website for a **VIRTUAL TOUR!**

AG LAND

DECATUR - 310± ac cropland, grass & livestock feeding facility, good water, exc building site & windbreaks, *good hunting potential* - NE/4 of 26-1-29 & NE/4 of 34-1-29 - **JUST LISTED!!**
SHERMAN - 5 ac farmstead w/3 br home, 50'x80' steel bldg, SW of Goodland
NORTON - 240 ac creek bottom farm on Solomon River w/all wheat going to Buyer, 1/2 mi W of Lenora - *wildlife paradise*
WALLACE - 510 ac native grassland w/3 livestock wells - NW of Sharon Springs - **PRICE REDUCED!**

***CHECK OUR WEB SITE FOR ADDITIONAL LISTINGS!**

"When you list with Farm & Ranch, it's as good as SOLD!"

WHY SOME PEOPLE THINK CELIA CRUZ IS TOM'S MOTHER.

Kids don't get enough art these days. For Ten Simple Ways to get more art in kids' lives, visit AmericansForTheArts.org.

ART.ASK.FOR.MORE.
AMERICANS.FORTHEARTS.ORG

FARM MACHINERY & EQUIPMENT ANNUAL SPRING CONSIGNMENT AUCTION

SATURDAY, MARCH 27, 2010 @ 9:30 A.M., CDT

AUCTION LOCATION: EAST HWY 24, COLBY, KS (AT FORMER JD FACILITY)



TRACTORS, ROGATOR, LOADER & GRADER:•Caterpillar CH55•98 Rogator 854•95 JD 8420•JD 4230, GB 880 loader w/grapple•AC 190 XT series III•75 Ford 3000•JD 3010, w/JD 46A loader•JD 4630•61 Oliver 770•JD "B" & "D"•Ford N9 & W9•95 Champion IV 720A road grader•82 CAT 950B Loader
COMBINES & HEADERS:•01 JD 9750 STS•85 Massey Ferguson 860•C-2 Gleaner, 14' header•MF 9024 platform, 24' header•MF Hesston head 20' platform•2) JD 212 pickup headers
HAY EQUIPMENT:•Tonutti GR350 rotary rake•Pottinger 771A twin rotary rake•H&S hi-capacity rake
LIVESTOCK EQUIPMENT & FEED TRUCKS:•98 Freightliner feed truck w/Harsh 575 mixer box•Kelly Ryan 5'x12' feedwagon •Farmhand "Power Wagon", silage feed wagon •72 Ford w/Harsh feed box•60) 6-bar x 20' continuous fence panel, clips & connectors •10-15 New cattle panels•19) tractor tire feeders•WHO PTO tub grinder
TRUCKS & PICKUPS:•95 Freightliner FL70 fuel truck•85 Freightliner w/daycab•95 Chevy Kodiak, 20' bed•95 Dodge Service Truck, Stahl service box•80 Chev 2T flatbed•59 Ford, B&H•48 Diamond T Truck - antique•99 Ford F150, 4x4•95 Ford Lariat•95 Ford F-150•93 Dodge Ram 250 •90 Chevy 1/2T, 4x4•90 Ford F150
CARS & MOTORCYCLE:•95 Fleetwood Cadillac•84 Toyota Corolla, •84 Ford Crown Victoria •70 Fleetwood Cadillac•00 Yamaha 650cc Motorcycle
TRAILERS:•09 Hitchcock 36' side dump on '97 Wabash trl•07 GN trl, 1,000 gal tank•93 Doonan 20' pup trailers•93 Jantz-Femco combine-sprayer trailer•92 Timpfe 42' dbl hopper •Skiles 1,000 gal liq fertilizer trl•Mate 30' aluminum end dump•B&B sprayer trl•Donahue 8'x28' HM trl•HM GN trl w/hoist•HM header trl•75 PJ 30' gooseneck trl
BALERS:•06 Hesston 956•03 NH BR780•01 JD 567•00 Vermeer 605L•92 NH 660•86 Vermeer 605C
FARM MACHINERY:•02 JD MoCo w/steel rolls•00 JD 1700 8-row planter •Quinstar 35' Fallowmaster II •2) Ditchers w/Orthman markers•JD 9300 24' hoe drills, -3 sec, 14" •IHC 7100 41' hoe drills- 3 section -12" •IHC 14' drills - 4 section, 12" spacing•Crustbuster 32' tandem disc•2) JD 8300 disc drills, 12"•Great Plains 20' drill, 10"•Krause 4231 field conditioner•FK 5'x5' blade plow •FK KM 7'x5' blade plows •Crustbuster 30' Hoe drill, 10" spacing•Bushhog 26' tandem disc•Gilmor Tatge seed cleaner•Alloway18' shredder•FK 24' rod•Farmhand 35' harrow•Ditch Witch 2300 trencher•Westfield drive over hopper•Implement caddy w/tank & guidance•Hitchcock bin cleaner•6' disc•Back blade•Soil mover, 122S •Tucker 12' speedmover•10' 3pt grader•5' mower•JD 3pt sprayer •20' field sprayer•Snyder 100 gal flat bottom tank•Eversman 215 MS 18' rototiller•Speed King 36'x12' conveyor auger•Dry fertilizer spreader. 50' spread

SHOP EQUIPMENT & MISC ITEMS:•06 380 gal 3PH HD air compressor•2) 3,000 gal & 2) 500 gal poly tanks•Craftsman pressure washer•2) Ford 460 irrigation engines, **AND MANY, MANY MORE ITEMS TOO NUMEROUS LIST!! MORE ITEMS COMING IN DAILY!!**

Call for a detailed brochure OR visit **www.farmandranchrealty.com**

FARM & RANCH REALTY, INC.

1420 W. 4TH. COLBY, KS 67701
TELEPHONE: (785) 462-3904 OR 1-800-247-7863
DONALD L. HAZLETT, BROKER/AUCTIONEER

"When you list with Farm & Ranch, it's as good as SOLD!"