

Garage Sales

315 S. Grant. Friday, June 11 from 5 - 8 p.m. and Saturday, June 12 from 8 a.m. - noon. Golf clubs, 4-pc. Queen bedroom set, dishes, bookcase, sports equipment, bikes, sofa hide-a-bed, holiday decorations, cookware, child desk, movies/games and miscellaneous. Something for everyone.
---6/9---6/11---

4-H Building in Colby. Friday, June 11 from 5 p.m. - 8 p.m. and Saturday, June 12 from 8 a.m. - 1 p.m. Infant/toddler boy clothing, girls and adult clothing. Nice toys, LP furnace, house items, home décor and much more!
---6/9---6/11---

440 N. Riddle. Yard sale in back yard. June 10, 11, & 12 from 8 a.m. - 5 p.m. Girls clothes 4-6, mens & women's clothes and lots of miscellaneous.
---6/7---6/11---

725 Woofter Ave. Friday, June 11 from 3 - 8 p.m. and Saturday, June 12 from 8 a.m. - ? Mens jeans sizes 34-31, girls jeans size 5, 6, & 7, girls clothes, kitchenware, furniture, etc.
---6/7---6/11---

Next Reiner doors on Hill Street in Colby. Saturday, June 12 from 8 a.m. - ?? Miscellaneous items from shop to household.
---6/7---6/11---

1730 Harvey. Saturday, June 12 from 8 a.m. - ? Baby clothes sizes 0-9 months, appliances, dishes and miscellaneous items.
---6/7---6/11---

Oakley School Cafeteria, 7th & Main in Oakley, KS. Saturday, June 12 from 8 a.m. - 3 p.m. Geraldine's Sugar Cookies and Parker's Spicy Mustard.
---6/7---6/11---

Moving Sale! One Day Only!! 1433 16th St. in Hoxie, KS. Saturday, June 12 from 7 a.m. - 7 p.m. Sofa, love-seat, rocking recliner, 3 pc. table set, lamps, large mirrors, wall décor, dishes, John Deere Collectables and Toys, much more; too numerous to mention. Cash only! No Early Birds Please!
---6/7---6/11---

Queen Mary Circle annual huge sale. Sacred Heart School Gym, W. 5th and French street. Friday, June 11 from 4 p.m. - 8 p.m. and Saturday, June 12 from 8 a.m. - 1 p.m. Something for everyone!
---6/7---6/11---

Real Estate



This is personal.
My mother died of colon cancer when she was only 56.

Terrence Howard, actor/musician



Colorectal cancer is the 2nd leading cancer killer in the U.S., but it's largely preventable. If you're 50 or older, please get screened.

1-800-CDC-INFO (1-800-232-4636)
www.cdc.gov/screenforlife



Real Estate

WANTED
LAND TO SELL
Contact
OR
WE SELL!
Call: Molly Oliver 785-462-5203
Call: Terry Stover 785-626-2082
STOCK REALTY & AUCTION CO.
390 N. Franklin, Ste. 100, Colby, KS 67701
www.stockrealtyandauction.com
785-460-SOLD (7653)
QUALITY LAND BROKERS & AUCTIONEERS



Are you looking for a good job?

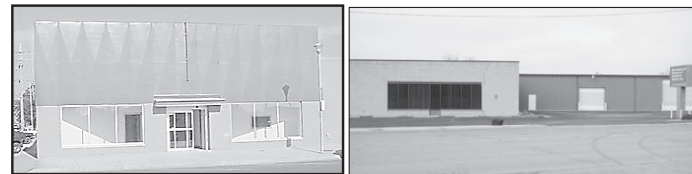
The Colby Free Press is looking for a full-time advertising executive to sell advertising for service skills with attention to Nor'West Newspapers. The work detail. Send a letter and resume week would be 40 hours with to Steve Haynes, publisher, at occasional evening and weekend 155 W. Fifth St., Colby, Kansas., duties. Computer skills with 67701 or s.haynes@nwkansan.com. Excel, Photoshop, inDesign, and Acrobat helpful but not necessary. EOE M/F/H



Real Estate

Homeland Realty & Auction

488 Acres Logan County cropland West of Page City, KS (SOLD)
66 Ac Prime Thomas Co cropland located at Levant, KS. Immediate possession with all 2010 wheat going to Buyer. (UNDER CONTRACT)
NEW 320 AC Wallace Co. CRP & Grass NW Sharon Spgs, KS \$525/Ac. Beautiful Ranch Style home located 15 miles South of Brewster, KS with full basement on 5.7 acres. 5 bdrm 3 bath (4 garage stalls) \$165,000.
11 ACRES THOMAS Co. cropland with 1,700 sq. ft. remodeled house Rexford, KS. All 2010 wheat to Buyer. \$98,500 w/roof allowance.
480 ACRES LOGAN COUNTY sprinkler irrigated land located 1 mi North of Page City, KS. 3 wells & 3 sprinklers. (3 yr. Cash Lease) \$2,150/acre.
Call Rock L. Bedore 785-443-1653
148 ACRES RAWLINS COUNTY Cropland and grass 4 1/2 miles North of Ludell, KS. \$811/acre. Call Pat 785-443-3261.
NEW-3.3 Acres with 7,215 sq. ft. building, close to Goodland Airport 580 E. Army Rd, Goodland, Ks Great warehouse & office space!! \$88,500.
Call Tom Harrison 785-443-0136
33.3 Acres Logan County land. Hwy. 83 frontage. Ideal business loc. on the North edge of Oakley, Kansas. I-70 within 5 miles. Can be split.
Call Jerry Wycoff 785-672-0429



200 N Franklin 13,000+ sq. ft. with 5 or 6 offices, 3 bathrooms, 2 parking lots, 3 overhead doors. Easy access from main street. Call Tom!
1675 W. 4th Colby 6,000 sq. ft. office/retail bldg. plus 4,500 sq. ft. Warehouse w/dock. May be leased. Reduced Price! Call Pat!

NEW PRICE COMMERCIAL PROPERTY 6.7 acres adjacent to Wal-Mart with I-70 frontage. Located in Colby, Kansas. \$750,000. Call Rock.
INDUSTRIAL LOT in Colby's Industrial Area just off of I-70 Exit 53. Great building location. \$47,000. Call Rock.
LOCATE to Colby's fastest growing area. I-70 frontage, 2-6 acre lots. Join Colby Petro, Colby Implement and others. Call Marilyn.
RESIDENTIAL LOTS in El Chaparral. Has established trees & domestic water well. Wonderful bldg. site. **JUST REDUCED-\$19,500-** Call Marilyn.
EXCELLENT RESIDENTIAL LOT loc. on Cottonwood Drive in Colby, KS. Beautiful mature pine trees with a prime location. \$39,000. Call Rock.
NEW RESIDENTIAL LOT Woofter Addition, Colby, Ks. \$25,000. Call Rock.
145 W 4th Colby, KS Soup, Salad, Sub & Pizza Shop. Everything you need to start business. All the equipment stays. Price Reduced. Call Tom
180 W 6th 2,750 square ft. brick office building. \$65,000 Call Rock!
410 N. Franklin Ideal office location, brick exterior, open floor plan, 2 yr. old roof. Lease possible. Join the "Main Street Gang!" Call Pat for details.
1200 W 4th Colby, KS Very well established & turn key business. Includes all inventory: hot tubs, chemicals & equipment. Chances like this don't come very often. For complete details, call Tom.

Agents
HomeLand REALTY AUCTION
"Western Hospitality"
1055 S. Range Colby, KS 785-462-8255
Rock L. Bedore 785-443-1653
Jerry Wycoff 785-672-0429
Marilyn Meyer 785-462-2703
Pat Sloan 785-443-3261
Tom Harrison 785-443-0136
www.homelandre.com

you're on the right track in the CLASSIFIEDS!

HomeLand REALTY AUCTION
"Western Hospitality"
www.homelandre.com
1055 S. Range 785-462-8255

665 W 4th \$79,900
Simply elegant 3 bed, 2 1/2 bath home enhanced by a cozy breakfast nook, warm kitchen, private den, & main floor laundry. Truly a home that will warm your heart! Give Pat a call today!

1385 W 1st \$87,000
Your family will enjoy this 4 bed/2 bath with a single attached garage located on a quiet street and priced to sell. Give Marilyn a call today, it won't last long!

680 W 4th \$66,900 REDUCED!
Front sitting porch & a new side deck enhance this charming home with main level living. Has open living room/dining room, family room & main floor utility. Give Pat a call today!!

2463 Co Rd 36, Rexford \$98,500
11.45 acres w/1,728 sq. ft. home remodeled in 2004. 3 bdrms, 1 bath & ready for your family. Don't forget the pets...there is room for all. Call Rock.

310 S. Garfield \$135,000
\$7,000 ALLOWANCE. Pick the exterior paint & new counter tops. Has New master bdrm on main floor, & new full bath, formal dining, den, family room, 4 bdrms up + a full bath. Nice deck off kitchen. All this on a corner lot.

1473 Pioneer Dr. \$117,500
"Country Living" 2.7 acres. Lots of trees, room & privacy. Lots of storage in this 4 bdrm, 3 bath ranch. Oversized heated garage/shop & double carport. Enjoy the fresh air & sunsets. Just a few minutes from town. Call Pat!!!

Make a Difference
RECYCLE

NEW LISTING
985 E. 6th \$110,000
A home with a heart awaits you in this traditional brick ranch offering 4 bedrooms, 2 baths, main floor laundry and so much more. Every room has been updated from the spacious master bedroom to the basement family room and game area. Enjoy your evenings on the spacious deck overlooking a great private back yard. It's a great place for your family. Call Pat for your tour today!

HomeLand REALTY AUCTION
"Western Hospitality"
Call Pat 443-3261
1055 S. Range 462-8255
www.homelandre.com

FARM & RANCH REALTY, INC.
1977 - 2010
30+ YEARS OF EXPERIENCE EXPERTISE EXCELLENCE
1420 W. 4TH - P.O. BOX 947 COLBY, KS 67701 785-462-3904
DONALD L. HAZLETT, Broker
www.farmandranchrealty.com
DON HAZLETT

WE INVITE YOU TO TALK TO ONE OF OUR REAL ESTATE PROFESSIONALS!
Naomi Ward • Steve Hazlett • Ron Evans • Ed Currier • Neal Mann • Mike Bailey • Scotty Legere

UPCOMING AUCTION
7/27/10 - SE/4 of 26-16-43, Greeley County, KS
REAL ESTATE FOR SALE
HAMILTON - 800 acres CRP & grass - Section 2-26-39, South of Kendall - modest improvements - **JUST LISTED!!**
COLBY - Building lot on Cherry Street in established neighborhood
GRAHAM - 240 acres expired CRP available in 2 tracts - near Hill City
GREELEY - 320 acres cropland & grass NW of Tribune, offered in 2 tracts
GOVE - 23 acres development or residential land located 1/4 mile N of Exit 107 off I-70 at Quinter
***CHECK OUR WEB SITE FOR ADDITIONAL PRIVATE TREATY LISTINGS!**

NEAR SWANSON RESERVOIR
105 acres irrigated cropland, grass & improvements - SE of Trenton - includes modern home, 2-car garage, large shop building, barn, other outbuildings, & second home for guest cottage or hunting lodge!
Tract 1: \$120,000 (Cropland acres)
Tract 2: \$290,000 (Grass and Improvements)

"When you list with Farm & Ranch, it's as good as SOLD!"

Join the Sellers that list with HomeLand Realty & Auction
Your Home, along with many other listings, will be viewed nationally.
Pat Sloan 443-3261 Marilyn Meyer 462-2703
Rock L. Bedore 462-6930 Jerry Wycoff 672-0429
Tom Harrison 443-0136
office@homelandre.com

515 Chambers- Gem \$15,000	210 W 5th \$109,000
114 S Pennsylvania-Jennings \$30,000	460 W 4th \$109,900
130 Main-Rexford CONTRACT \$110,000	985 E. 6th NEW LISTING \$117,500
865 S. Garfield NEW LISTING \$63,500	1473 Pioneer Dr. \$117,500
680 W. 4th REDUCED \$66,900	975 E. 5th \$124,900
1320 W 5th NEW LISTING \$71,500	880 Thompson \$10,000 Allowance!!
620 W 4th CONTRACT \$76,500	310 S. Garfield \$7,000 Allowance!!
765 S. Range \$76,500	1280 E. 8th CONTRACT \$165,000
665 W 4th NEW LISTING \$79,900	194 Co Rd. 3 \$165,000
1385 W. 1st \$87,000	Cottonwood "Great Site"
465 Lawrence Dr. CONTRACT \$87,000	El Chaparral Lot "REDUCED"
945 Mentlick CONTRACT \$98,500	540 Woofter "UNBELIEVABLE"

Stock Realty & Auction Co.
390 N. Franklin Ste. 100 Colby, KS 67701 (785) 460-7653

Molly J. Oliver
Residential Specialist
462-6133 (res)
"An Agent Outselling"
www.stockra.com

4.4 +/- Tract Just S. of colby In NE/4 17-9-33 \$15,000	Reduced Price!! Traditional Charming 655 W. Cedar \$62,000	NEWER LISTING So very nice! 540 W. Cherry \$56,500	Attractive Home 3 BR, 2 bath - Charming 450 W. 5th \$112,500
Many updates 4 BR, 2 bath - Brick 1115 Maize \$142,500	Everything you want. 5 BR, 4 bath, 2 car garage 1060 Wheatridge \$178,500	You Must View! Unbelievable features 1818 Harvey Ct. \$244,900	Beautiful Woodwork Open Rooms 1065 W. 3rd \$86,500
Lender Owned Brewster Home 202 Kansas \$27,900	Lower, Lower Price Land, Home & More Menlo, KS \$79,900	SELDEN, KS 4 BR, 1,680 sq. feet 105 S. Illinois \$69,900	MOLLY IS READY TO LIST & SELL YOUR HOME. "an agent outselling"