

## Help Wanted



### BOSSELMAN Travel Center

**NOW HIRING:**

- Sales Associates
- Custodians

**\$500 HIRING BONUS!**


Great Benefits!

- Fuel Discounts!
- 401K!
- Flex Plan!
- Group Health & Dental!
- Vacation Pay!
- Holiday Incentive Pay!
- Advancement Opportunities!

Apply at the Bosselman Travel Center, I-70 Exit 54 or download an application online at [www.bosselman.com](http://www.bosselman.com)

EOE Post-Employment Drug Testing Required

## ATTENTION PROFESSIONALS: CAREER OPPORTUNITY!



**Career Fair for Assistant Store Manager Positions**

**Tuesday, July 13, 2010**  
**11 AM to 6 PM**  
**Frontier Room**  
**203 W. 41st St.**  
**Hays, KS**  
*Bring Cover Letter and Resume*

Recruiting for positions in these locations: Dodge City, Garden City, Colby, Hays, and Larned

**Candidate Requirements:** Bachelors degree and/or Management experience

**Qualifications:** Include strong work ethics and integrity; ability to direct others; willingness to work weekends, evenings, holidays; and excellent customer service skills

**Salary:** Entry level \$36K plus bonus potential; Salary depends upon candidate qualifications & experience

**Benefits:** Medical, dental, vision, 401K, paid vacations, opportunities for advancement, employee discounts, work for a Fortune 500 company, & much more

[www.dillons.com](http://www.dillons.com)

## Help Wanted

### Heartland Rural Counseling Services, Inc.

485 West 4th Street • Colby, KS

Specializing in individual, family, marital, adolescence, child therapy, diagnostic testing, adoption home studies, anger management and parenting classes.

785-460-7588  
 Colby and Goodland

### SRS

The West Region SRS is recruiting for a Vocational Rehabilitation Counselor. This position could be based in either the Colby or Goodland SRS Regional Service Center.

This is advanced professional counseling work to help people with disabilities achieve employment. The position helps clients identify their job-related goals; develop individual plans for employment; and provide or purchase a comprehensive variety of services, which may include training, physical/mental restoration, assistive technology, supported employment, and job placement. Counseling and guidance provided help clients identify their strengths and abilities; adjust to disability; exercise informed choice; maintain progress through their individual plans; and understand labor market trends and employment opportunities.

**Educational requirements: Masters in Rehabilitation Counseling; or Masters in other disciplines plus completion of specific graduate courses related to the VR counseling discipline.**

See <http://www.srskansas.org/rehab/text/qualifications.htm> for more information.

To apply, please submit the Kansas Employment Summary, a letter of application, resume, and transcript to Jennifer Graber at Dodge City SRS, 1509 Avenue P, Dodge City, KS 67801. For more information please call 620-227-8505 ext. 243 or e-mail to [Jennifer.Graber@srs.ks.gov](mailto:Jennifer.Graber@srs.ks.gov).

SRS is an ADA/EOE committed to a diverse workforce.

Use the Classifieds!

## Real Estate

### Homeland Realty & Auction

320 AC Wallace Co. CRP & Grass NW Sharon Spgs, KS \$525/Ac.  
**11 ACRES THOMAS Co.** Cropland w/ house (UNDER CONTRACT)  
**480 ACRES LOGAN COUNTY** sprinkler irrigated land located 1 mi North of Page City, KS. 3 wells & 3 sprinklers. (w/ 3 yr. Cash Lease) \$2,150/ac.  
 Call Rock L. Bedore 785-443-1653

**148 ACRES RAWLINS COUNTY** Cropland and grass 4 1/2 miles North of Ludell, KS. \$811/acre. Call Pat 785-443-3261.  
**NEW-3.3 Acres** with 7,215 sq. ft. building, close to Goodland Airport 580 E. Armory Rd, Goodland, Ks Great warehouse & office space!! \$88,500.  
 Call Tom Harrison 785-443-0136

**33.3 Acres Logan County** land. Hwy. 83 frontage. Ideal business loc. on the North edge of Oakley, Kansas. I-70 within 5 miles. Can be split.  
 Call Jerry Wycoff 785-672-0429

### PRICE REDUCED!!!

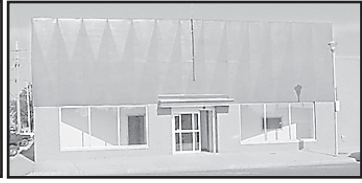


### 1200 W 4th

Dynasty Spas, formerly known as Cal Spas, is a very well established & turn key business. P&L's shown to qualified buyers. Price reduced to \$195,000. Chances like this don't come very often!!  
 Call Tom today at 785-443-0136.



2,750 sq. ft. brick office building located at 180 W 6th in Colby, KS. Immediate possession.  
 Call Rock! \$65,000



**200 N Franklin** 13,000+ sq. ft. with 5 or 6 offices, 3 bathrooms, 2 parking lots, 3 overhead doors. Easy access from main street. Call Tom!

**NEW PRICE COMMERCIAL PROPERTY** 6.7 acres adjacent to Wal-Mart with I-70 frontage, Located in Colby, Kansas. \$750,000. Call Rock **INDUSTRIAL LOT** just off of I-70 Exit 53 Colby, KS. \$47,000. Call Rock **LOCATE** to Colby's fastest growing area. I-70 frontage, 2-6 acre lots. Join Colby Petro, Colby Implement and others. Call Marilyn.

**NEW PRICE!!! RESIDENTIAL LOT** on Cottonwood Drive in Colby, KS. Beautiful mature pine trees with a prime location. \$29,500. Call Rock **NEW RESIDENTIAL LOT** Woofter Addition, Colby, Ks. \$25,000. Call Rock **10 Stephens Dr.** 50' X 100' steel building offers a lot of options for a business or private use. 2.1 Acres off Exit 54, Colby, KS. **CALL ROCK!** **145 W 4th Colby, KS Soup, Salad, Sub & Pizza Shop.** Everything you need to start business. All the equipment stays. Price Reduced. Call Tom **410 N. Franklin** Ideal office location, brick exterior, open floor plan, 2 yr. old roof. Lease possible. Join the "Main Street Gang!" Call Pat for details. **1675 W. 4th Colby** 6,000 sq. ft. office/retail bldg. plus 4,500 sq. ft. Warehouse with dock. May be leased. **Reduced Price!** Call Pat!

**HomeLand REALTY AUCTION**  
 "Western Hospitality"  
 1055 S. Range Colby, KS  
 785-462-8255

**Agents**

Rock L. Bedore 785-443-1653  
 Jerry Wycoff 785-672-0429  
 Marilyn Meyer 785-462-2703  
 Pat Sloan 785-443-3261  
 Tom Harrison 785-443-0136

[www.homelandre.com](http://www.homelandre.com)

## Real Estate



### AG & Commercial Listings

**WALLACE CO.** \$552.19 Acre  
 (Grass under fence) 1,680 Acres

**CHEYENNE CO.** \$388,000  
 (Newer improvements) 325 +/- Acres

**GOVE COUNTY** \$2,567 Acre  
 (Three wells) 264 +/- Acres

**SHERIDAN CO.** \$1,398 Acre  
 (Grass, cropland & improv.) 316 +/- Acres

**THOMAS CO.** \$3,082 Acre  
 (Rare find, great farm) 960 +/- Acres

**THOMAS CO.** \$2,958 Acre  
 (Irrigated land) 584 +/- Acres

**THOMAS CO.** \$15,000  
 (Electric to land) 4.4 +/- Acres

**STEAKHOUSE** \$175,000  
 (Full business) Selden, KS

**BRICK TRI-PLEX** \$175,000  
 (Bsmt. + garages) Colby, KS

**STOCK REALTY & AUCTION CO.**  
 390 N. Franklin, Ste. 100, Colby, KS 67701  
[www.stockrealtyandauction.com](http://www.stockrealtyandauction.com)  
 785-460-SOLD (7653)

QUALITY LAND BROKERS & AUCTIONEERS

### SRS

The West Region SRS is now recruiting for a half time Human Services Assistant position to be based in the Colby Regional Service center. This position will work 20 hours a week and salary is \$12.35/hour.

Primary role is to provide direct customer service by working at the front desk and answering phones. **MINIMUM REQUIREMENTS:** High School diploma or equivalent. Screening criteria: Experience in office support/clerical work including basic computer skill and software application skills.

An Employment summary must be completed and submitted in order to be considered for this position. You can complete one on line at [www.jobs.ks.gov](http://www.jobs.ks.gov), select West Jobs, Requisition number 166216. Or stop in the Colby office, 1135 S. Country Club Drive, Suite1, Colby to pick up a paper application or contact Pat Baalman at 785-462-6760 ext. 202 or e-mail Pat.Baalman@srs.ks.gov.

Applications must be received by 5 PM, Monday, July 12, 2010.

SRS is an ADA/EOE committed to a diverse workforce.

## Real Estate

### HomeLand REALTY AUCTION

"Western Hospitality"  
[www.homelandre.com](http://www.homelandre.com)  
 1055 S. Range  
 785-462-8255



### PRICE REDUCED

765 S. Range \$69,900

Ideal for a young family featuring 4 bdms. 3 baths. Main floor laundry. Has 20 x 30 detached garage & shop w/plenty of room to expand. Give Pat a call today!!!!

1320 W 5th \$71,500

So much for so little. 3 bedroom/2 bath home with open living, dining, & kitchen area, and master bedroom with private bath and walk-in closet. Totally updated. It's move-in ready! Call Pat today!

975 E 5th \$124,900

3 bedroom, 3 bath brick ranch on corner lot with large living room & family room. Over 1800 sq ft on main level with a partial basement that has been partially finished. Yard has sprinklers. Call Marilyn!

114 & 114 1/2 S Pennsylvania Ave Jennings, Kansas

2 homes for the price of 1! Main house has 2 beds/2 baths and mobile home in back has 3 beds/1 bath. Both have been well maintained. If you love to hunt or fish, this property would make great lodging! \$30,000 Call Tom!

985 E. 6th \$110,000

4 bedroom/ 2 bath home with main floor laundry and so much more. Every room updated from the spacious master bedroom to the basement family room and game area. Spacious deck overlooks private backyard. Call Pat today!

515 Chambers, Gem, KS \$15,000

2 bedroom, 1 bath home, appliances negotiable and property is being sold as is. Located in a small quaint community on 8 lots. Call Marilyn.

Inventory is low - WE WANT YOUR HOME. Give us a call and let our team of experienced realtors provide you with a free market analysis. **HOMELAND- A TEAM WORKING FOR YOU!**

515 Chambers- Gem \$15,000	2463 Co Rd 36-Rexford CONTRACT \$104,000
245 N. Grant CONTRACT \$30,000	210 W 5th REDUCED
114 S Pennsylvania-Jennings CONTRACT \$30,000	460 W 4th CONTRACT \$110,000
865 S. Garfield CONTRACT \$71,500	985 E. 6th CONTRACT \$117,500
345 N. Cleveland CONTRACT \$66,900	1473 Pioneer Dr. \$124,900
680 W. 4th REDUCED \$69,900	975 E. 5th \$124,900
765 S. Range REDUCED \$71,500	880 Thompson \$10,000 Allowance!!
1320 W 5th \$79,900	310 S. Garfield \$7,000 Allowance!!
665 W 4th \$79,900	1280 E. 8th SOLD
1385 W. 1st \$87,000	Cottonwood "Great Site"
465 Lawrence Dr. CONTRACT	540 Woofter "UNBELIEVABLE"

Join the Sellers that list with HomeLand Realty & Auction  
 Your Home, along with many other listings, will be viewed nationally.  
 Pat Sloan 443-3261 Marilyn Meyer 462-2703  
 Rock L. Bedore 462-6930 Jerry Wycoff 672-0429

Tom Harrison 443-0136  
[office@homelandre.com](mailto:office@homelandre.com)

### The City of COLBY Communications Officer I

The City of Colby Police Department is accepting applications for the position of Communications Officer I. The successful applicant will be trained in radio communications for Police, Sheriff, Fire, and 911 emergencies. This position entails a forty-hour work week and does include shift work. Successful applicants will possess a high school diploma or GED, must be willing and able to work with the public, be able to pass and maintain NCIC certification, and must have a clear criminal record. It is preferred that the successful applicant reside within the city limits of Colby. The colby Police Department is an equal opportunity employer and provides employees with sick leave, vacation, KPERS retirement benefits, health insurance, and overtime provisions. Additionally, some college tuition benefits may be available after the first year of employment. Starting salary will depend on qualifications of successful applicant with the minimum starting salary being \$11.18 per hour. Persons wishing to apply may pick up an application at the Colby Police Department, 225 N. Court, Colby Kansas 67701 (Phone: 785-460-4460) or you may download the application on the City of Colby web page. Application review to begin upon receipt of application. Open until filled.

Equal Opportunity Employer

### Stock Realty & Auction Co.

390 N. Franklin Ste. 100  
 Colby, KS 67701  
 (785) 460- 7653



**Molly J. Oliver**  
 Residential Specialist  
 462-6133 (res)  
 "An Agent Outselling"  
[www.stockra.com](http://www.stockra.com)

QUALITY LAND BROKERS & AUCTIONEERS

1977 - 2010  
**30+**  
 YEARS OF  
 EXPERIENCE  
 EXPERTISE  
 EXCELLENCE

**FARM & RANCH REALTY, INC.**  
 1420 W. 4TH - P.O. BOX 947  
 COLBY, KS 67701  
 785-462-3904  
**DONALD L. HAZLETT, Broker**

[www.farmandranchrealty.com](http://www.farmandranchrealty.com)

**DON HAZLETT**

WE INVITE YOU TO TALK TO ONE OF OUR REAL ESTATE PROFESSIONALS!

Naomi Ward • Steve Hazlett • Ron Evans • Ed Currier • Neal Mann • Mike Bailey • Scotty Legere

**160 ACRES GREELEY COUNTY, KS CROPLAND**  
**LAND AUCTION**  
**Tues., July 27, 2010 @10:30 AM, MDT**  
**SELLERS: Shepherd Heirs**

**AUCTION LOCATION:**  
 4-H Building, Tribune, KS

**SE/4 of 26-16-43**

**161.5 acres cropland**  
**FSA Base/Yld: Wheat - 85.5/31 GS - 17.1/32**  
 Land and is located NW of Tribune near KS/CO state line and is a *perfect quarter*. Entire quarter is Richfield silt loam with 0-1% slope. Immediate possession to the Buyer at closing.

\*\*CHECK OUR WEB SITE FOR LISTINGS AND VIRTUAL TOURS!\*\*

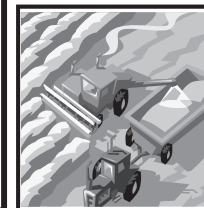
"When you list with Farm & Ranch, it's as good as SOLD!"

### REAL ESTATE FOR SALE

**WALLACE** - 1,040 ac CRP, cropland & grass, N of Weskan, KS - immediate possession, available in two tracts

**NORTON** - 120 ac cropland & grass, NW of Lenora, live spring water, exc hunting - NE/4SE/4 of 31-4-24; SW/4NW/4 & NW/4SW/4 of 32-4-24

**LAND AUCTION-Aug 17, 2010**  
 Section 12-14-30, Gove County  
 Watch for sale bills!



Have a **SAFE and PRODUCTIVE** wheat harvest!

 BREWSTER, KS Attractive 3 BR 309 Rock Island \$47,000	 Traditional 2-story 5 BRS - 2 baths 685 N. Court \$57,000	 REDUCED AGAIN Charming 3 BR - 2 bath 655 W. Cedar \$59,900	 NEW LISTING 4 BR, 2 bath 1018 Ct. Terrace \$81,500
 Lovely & Charming 3-4 BR, 2 bath 1065 W. 3rd \$86,500	 Come view me 5 BR, 3 bath, extra garage 1125 S. Court \$109,000	 MOVE-IN PERFECT 3 BR, 2 bath 450 W. 5th \$112,500	 CONTEMPORARY "WOW" 4 BR, 2 bath - great area 1115 Maize \$142,500
 GREAT AREA & VALUE 5 BR - 3 bath Brick 1060 Wheatridge \$178,500	 DREAM HOME So many, many extras! 1818 Harvey Ct. \$244,900	 WANT COUNTRY? Great for horses Menlo - \$79,900	 SELDEN, KS 4 Br. Bungalow 105 S. Illinois \$69,900