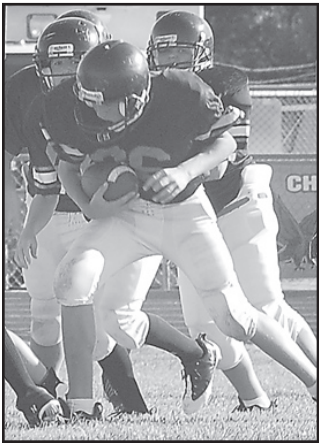


Weather Corner



National Weather Service
Tonight: Partly cloudy, with a low around 45. Breezy, with an east wind 5 to 10 mph becoming north between 15 and 20 mph. Winds could gust as high as 30 mph.

Saturday: Mostly sunny, with a high near 67. East wind between 10 and 15 mph.

Saturday Night: Partly cloudy, with a low around 41. Southeast wind around 10 mph.

Sunday: Mostly sunny, with a high near 69. Breezy, with a south wind between 10 and 20 mph, with gusts as high as 30 mph.

Sunday Night: Mostly clear, with a low around 44.

Monday: Sunny and breezy, with a high near 76.

Monday Night: Mostly clear and breezy, with a low around 50.

Tuesday: Mostly sunny and breezy, with a high near 78.

Tuesday Night: Partly cloudy, with a low around 48.

Thursday: High, 76; Low 42
 Precip: Thursday 0.00 inches
 Month: 0.00 inches
 Year: 17.72 inches
 Normal: 19.19 inches
 (K-State Experiment Station)

Sunrise and Sunset
 Saturday 7:41 a.m. 7:25 p.m.
 Sunday 7:42 a.m. 7:24 p.m.
 Monday 7:43 a.m. 7:22 p.m.
 (U.S. Naval Observatory)

Sports announcer starts new webcast

From "WEBCAST," Page 1

the wave of the future. Epp said he is learning more about the Internet all the time. The longtime announcer said the great thing about the Internet is it has no geographical limits.

Epp and Carlton are also doing a sports show from Smoffee's coffee shop from 4 to 5 p.m. every Monday. Epp said the show is made up of three sections: 15 minutes on high school sports, 15 minutes on college sports and 15 minutes on professional sports. He said the restaurant's owners were the ones who approached them about doing the show.

Epp said he has been doing a sports radio show off and on for the last 10 years on 790 AM KXXX, 100.3 FM KRDO and the Colby Community College radio station 91.9 FM KTCC.

Epp announced sports on the college radio station last year, along with radio students. He said some board of trustee members didn't approve of the relationship between the radio station and J&R Marketing. He also taught a radio broadcasting class at the college.

"Although I enjoyed mentoring and teaching kids in the radio department, I chose to not continue the relationship with the college

because several board of trustees did not agree with the relationship with J&R marketing."

"I don't feel that any of the board members have anything against Rich Epp, he does a good job announcing," board chair Cindy Black said.

She said the board felt students needed to have the opportunity to broadcast as many games as possible so they could gain valuable experience in preparing them for the job market in radio. Epp said he didn't agree with Black's analysis.

Joe Vyzourek, radio instructor at the college, said Epp was making a donation to the college with a small amount of the proceeds J&R marketing made by running donor acknowledgements of business clients while he was on the air.

"The college was concerned the agreement with him could be seen as a non-profit education radio station charging for putting programming on the radio station," he said.

Vyzourek said in section 73 of the Federal Communications Commission rule book there is a rule prohibiting non-profit stations from charging someone to put their program on their station. The donations Epp made to the college provided scholarships.

Area foster agency says more volunteers needed

From "FOSTER," Page 1

and Environment makes yearly visits to make sure homes are still meeting the safety standards.

Youthville provides several different types of foster care including respite, emergency, therapeutic and foster-to-adopt.

Roberts said respite care is basically baby-sitting for foster parents when they are away. Emer-

gency care is providing a place for a child to stay for a night or weekend while the agency looks for a family to place him or her with, she said.

Therapeutic care is when a family takes in a child with legal or emotional issues who requires a lot more care. She said this type of child requires a lot more mental health services from both inside and outside Youthville.

Harvester says county must fix roads

From "COUNTY," Page 1

new spread by hand. She said the county is due to come off the Mantron maintenance contract at the end of the year. The commissioners gave her permission to contact the company to see what the cost would be for just the treasurer's office to stay on a maintenance contract. A representative from the company will be at the commissioner's Monday meeting.

Brett Emberson from Hardman Benefit Plan out of Wichita briefed the commissioners on what an advisor can do for cities and counties when it comes to employee benefits. He said employee benefits are probably the

second or third largest item in a city or county budget. The commissioners told Emberson they had already hired a consultant.

The county received an invoice from Colby Community College for an emergency medical technician who was told some of the classes she took would be paid for from a grant if she stayed with the service for a year. By the time the year was up, the grant wasn't available, and the technician had fulfilled her obligation, and is still working as a volunteer. When applying for a job, she needed her transcript and since it was not paid, the college denied her a transcript. The commissioners approved payment.

In other business, the commissioners:

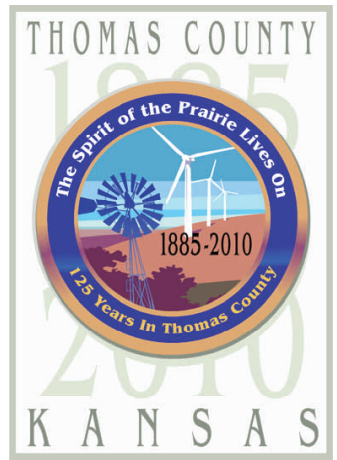
- Approved accounts payable in the amount of \$168,786; payroll for \$180,407; and Road and Bridge and Noxious Weed Departments for \$231,766.

- Transferred \$10,000 from the landfill budget to the cell coverage line item.

- Had a phone conversation with landfill supervisor Larry Jumper, who said the cell coverings were nearing 80 percent complete, with the new pit being 60 percent done.

- Agreed to meet at 9 a.m. on Monday, and Oct. 11, 18 and 29, in the commissioners meeting room in the courthouse.

JOIN US FOR THE 125TH BIRTHDAY CELEBRATION



Colby Community Building

- 9 a.m. - Doors Open - Admission FREE
- Judging for Beard & Bonnet Contest
- Coffee, juice & mini muffins on sale by AAUW
- 10 a.m. - Opening Ceremony
- Thomas County Musical Groups
- Thomas County Past & Present
- Thomas County Historical Video
- Closing Remarks

Meal served following the program with FREE admission ticket. Admission tickets will be available at the door preceding the opening ceremony at 10 a.m.

For More Information Please Call: 460-3401 or 460-7643.

SATURDAY, OCTOBER 9, 2010

Looking for a positive difference or facing change?

- Stocks
- Bonds
- Mutual Funds
- Annuities
- Retirement Planning
- Life Insurance



Help is here!

Lisa Wilson
 Financial Consultant
 Located at Farmers & Merchants Bank of Colby
 785-460-3321

Investment Professionals INC

MEMBER FINRA & SIPC

Securities and advisory services offered through Investment Professionals, Inc. Member FINRA & SIPC
 Products carry No Bank Guarantee, are Not FDIC Insured and May Lose Value

LOCAL TV LISTINGS

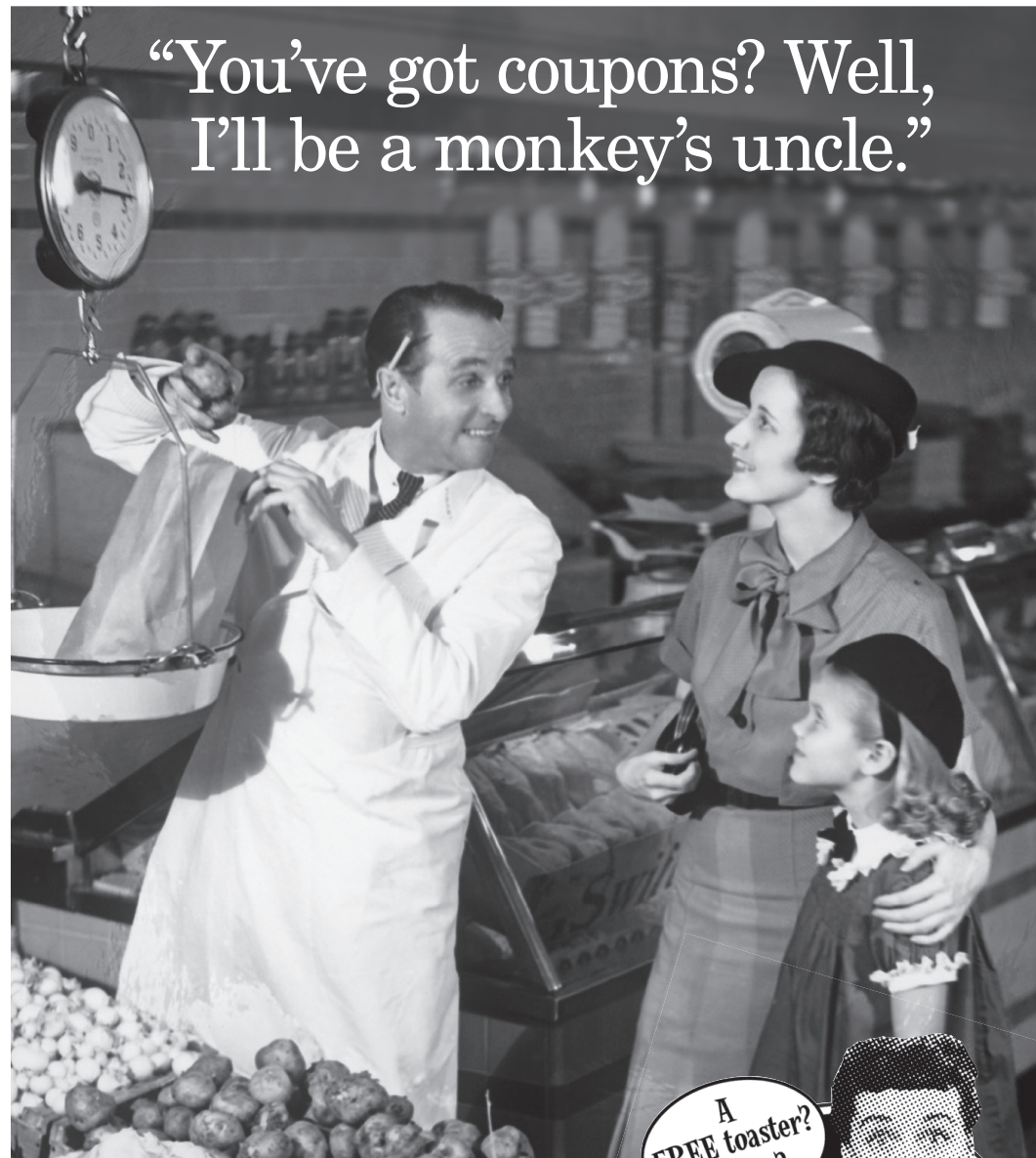
sponsored by the



COLBY FREE PRESS

Monday Evening October 4, 2010

	7:00	7:30	8:00	8:30	9:00	9:30	10:00	10:30	11:00	11:30
KAKE/ABC	Dancing With Stars				Castle		Local	Nightline	Jimmy Kimmel Live	
KBSL/CBS	How I Met Rules	Two Men Mike			Hawaii Five-0		Local	Late Show Letterman	Late	
KSNK/NBC	Chuck	The Event			Chase		Local	Tonight Show w/Leno	Late	
KSAS/FOX	House	Lone Star			Local					
Cable Channels										
A & E	Intervention		Hoarders		Hoarders			Intervention	Intervention	
AMC	Overboard							Rubicon		
ANIM	Pit Bulls-Parole		I Was Bitten		River Monsters			Pit Bulls-Parole	I Was Bitten	
BRAVO	Housewives/Atl.		Housewives/Atl.		Thintervention			Housewives/Atl.	Housewives/Atl.	
CMT	Hidalgo							The Dukes of Hazzard	Smarter	Smarter
CNN	Parker Spitzer		Larry King Live		Anderson Cooper 360				Larry King Live	
COMEDY	Idiocracy		South Pk	South Pk	South Pk	South Pk	Daily	Colbert	Ugly Amer	Futurama
DISC	Dual Survival		Dual Survival				Dual Survival		Dual Survival	
DISN	Halloweentown				Phineas	Phineas	Deck	Deck	Hannah	Hannah
EI	Kardash	Kardash	Kardash	Kardash	Fashion	The Soup	Chelsea	EI News	Chelsea	Fashion
ESPN	Countdown	NFL Football							SportsCenter	
ESPN2	2010 Poker	2010 Poker			Baseball Tonight		30 for 30		Baseball Tonight	
FAM	O Brother, Where Art				Funniest Home Videos		The 700 Club		Whose?	Whose?
FOOD	Unwrapped	Unwrapped	The Best	The Best	Diners	Diners	Good Eats		The Best	The Best
FX	Wild Hogs					Two Men	Two Men	Halloween	H2O: 20 Years Later	
HGTV	Property	First	House	Designed	House	Hunters	My First	My First	House	Designed
HIST	Pawn		Pawn		Pawn			Hardcore History	Pawn	Pawn
LIFE	Chris	How I Met	Flirting With Forty				How I Met	How I Met	How I Met	Frasier
MTV	Jersey Shore		Fantasy	Fantasy	World	Buried	World	Buried	Jersey Shore	
NICK	My Wife	My Wife	Chris	Chris	George	George	The Nanny	The Nanny	Malcolm	Malcolm
SCI	Scare	Scare	Scare	Scare	Scare	Scare	The Resistance		Street Fighter	
SPIKE	UFC Fight Night		The Hills Have Eyes					Knockout	Knockout	Sports
TBS	Fam. Guy	Fam. Guy	Fam. Guy	Fam. Guy	Fam. Guy	Fam. Guy	Lopez Tonight		Earl	Earl
TCM	Penthouse				Skyscraper Souls				Touch of Evil	
TLC	People	People	Quints	Quints	Say Yes	Say Yes	People	People	Quints	Quints
TNT	Bones		Bones		The Closer		Men of a Certain Age		CSI: NY	
TOON	Adventure	MAD	Total	Stoked	King/Hill	King/Hill	Fam. Guy	Fam. Guy	Chicken	Aqua Teen
TRAV	Food Wars	Man, Food	Man, Food	Man, Food	Man, Food	Man, Food	Hamburger Paradise		Man, Food	Man, Food
TV LAND	Sanford	Sanford	The Nanny	The Nanny	Romancing the Stone				Roseanne	
USA	NCIS		WWE Monday Night RAW						The Condemned	
VH1	Real and Chance		Money Hungry		La La		I Love Money		Money Hungry	
WGN	Chris	Chris	Chris	Chris	WGN News at Nine		Scrubs	Scrubs	South Pk	South Pk
Premium Channels										
HBO	Real Time/Bill Maher		Sins of My Father		The Blind Side					Last Sam
MAX	Drag Me	I Love You, Man			The Fourth Kind				Sin City Diaries: Neon Nights	
SHOW	Bandstand		Dexter		Weeds	The Big C	Weeds	The Big C	Dexter	



Get up to 50% in discounts from local and national stores everywhere.

Just one of many extras with our newfangled **SPEND&SIGN&SAVE**. Available *only* at Sunflower Bank.



888.827.5564 | sunflowerbank.com MEMBER FDIC

These are the good old days!