

Senior Progress Center

There will be a Christmas party at 11 a.m. Tuesday at the Senior Progress Center. Following Christmas brunch Thursday, the center closes at noon and will reopen Tuesday, Dec. 28. There will be no meals or transportation while the center is closed.

Activities for the week: **Monday:** candy cane day. **Tuesday:** 10 a.m. exercise; 11 a.m. Christmas party. **Wednesday:** show your Christmas spirit by wearing Christmas attire. **Thursday:** 11 a.m. Christmas brunch; center closes at noon. **Friday:** center closed, no meals or bus.

Menus for the week: **Monday:** sloppy joes, macaroni and cheese, California blend vegetables, bun,

cook's choice fruit. **Tuesday:** ham, au gratin potatoes, corn, dinner roll, cranberry apple salad, pumpkin bars or cake. **Wednesday:** tuna salad, tomato soup, peaches, bread, cookie. **Thursday:** sausage gravy, potato rounds, green beans, biscuit, apricots. **Friday:** no meal. Center closed.

The Thomas County Nutrition Center invites anyone 60 and older and guests to lunch Monday through Friday at the senior center. Home delivery is available, as is pick-up service. A contribution of \$3 per meal is suggested for seniors, \$5.25 for others. For anyone under 60, home delivery is \$5.75. Make reservations at (784) 460-2901 by noon the day before.

Student News

Colby Public Schools
Activities: Monday: finals; Colby Community College Christmas break; 7 p.m. school board, administration building. **Tuesday:** finals; 2:30 p.m. fifth grade band concert, grade school; 7:30 p.m. fifth through eighth grade band concert, grade school auditorium. **Wednesday:** finals; eligibility for activities determined; 1:30 p.m. school dismissed; end of second quarter and first semester. **Thursday through Saturday:** no school or practice, winter break.

Menus: Monday: breakfast: pancakes, sausage patty, cinnamon, applesauce; lunch: sloppy joe, school bun, tater tots, mixed veggies, pineapple chunks. **Tuesday:** breakfast: Belgian waffle sticks, grape juice; lunch: crispy taco, rice, corn, hot roll, pear half. **Wednesday:** breakfast: French toast sticks, juice; lunch: wafers ham on bun, baked beans, curly fries, baby carrots, fresh fruit.

Colby Community College
 Campus closed through Monday, Jan. 3.

Brewster
Activities: Monday: no school, Christmas vacation through Monday, Jan. 3; 7 p.m. board of education meeting.

Golden Plains
 Christmas vacation through Monday, Jan. 3.

Heartland
Activities: Monday: 7 p.m. board meeting. **Wednesday:** noon, end of second quarter. **Thursday:** no school, Christmas vacation through Tuesday, Jan. 4.

Sacred Heart
Activities: Monday: 7 p.m. Christmas program. **Wednesday:** 1:15 p.m. dismiss; end of second quarter. **Thursday:** no school, Christmas vacation.

Menus: Monday: nachos, peas, peach half, roll, birthday cake. **Tuesday:** chicken fried steak, mashed potatoes, gravy, corn, tropical fruit, roll. **Wednesday:** deli sandwich, French fries, cucumber slices, orange slices.

School activities will next be published on Thursday, Dec. 30, for the following week.

Is your school missing from this list? Send your calendar and menus (text files) to colby.society@nwkansan.com, or Colby Free Press, 155 W. Fifth, Colby, Kan., 67701.

MOVIES

NOW SHOWING

Digital/3D Cinema
Dec 17th - Dec. 21st

UNSTOPPABLE

Starring: Denzel Washington & Chris Pine
PG-13 1 Hour, 40 Minutes
Friday & Saturday 7:00 & 9:00
Sunday - Thursday 7:00

LOVE & OTHER DRUGS

Starring: Anne Hathaway & Jake Gyllenhaal
PG 1 Hour, 53 Minutes
Friday & Saturday 7:00 & 9:15
Sunday - Thursday 7:00

Starting on Wednesday Dec. 22nd

TRUE GRIT

Starring: Jeff Bridges, Matt Damon, & Josh Brolin
PG 1 Hour, 50 Minutes
Wednesday & Thursday 7:00 & 9:00

LITTLE FOCKERS

Starring: Ben Stiller, Dustin Hoffman, & Jessica Alba
PG 1 Hour, 40 Minutes
Wednesday & Thursday 7:00 & 9:00

We are closed Christmas Eve but
reopen on Christmas Night
Happy Holidays

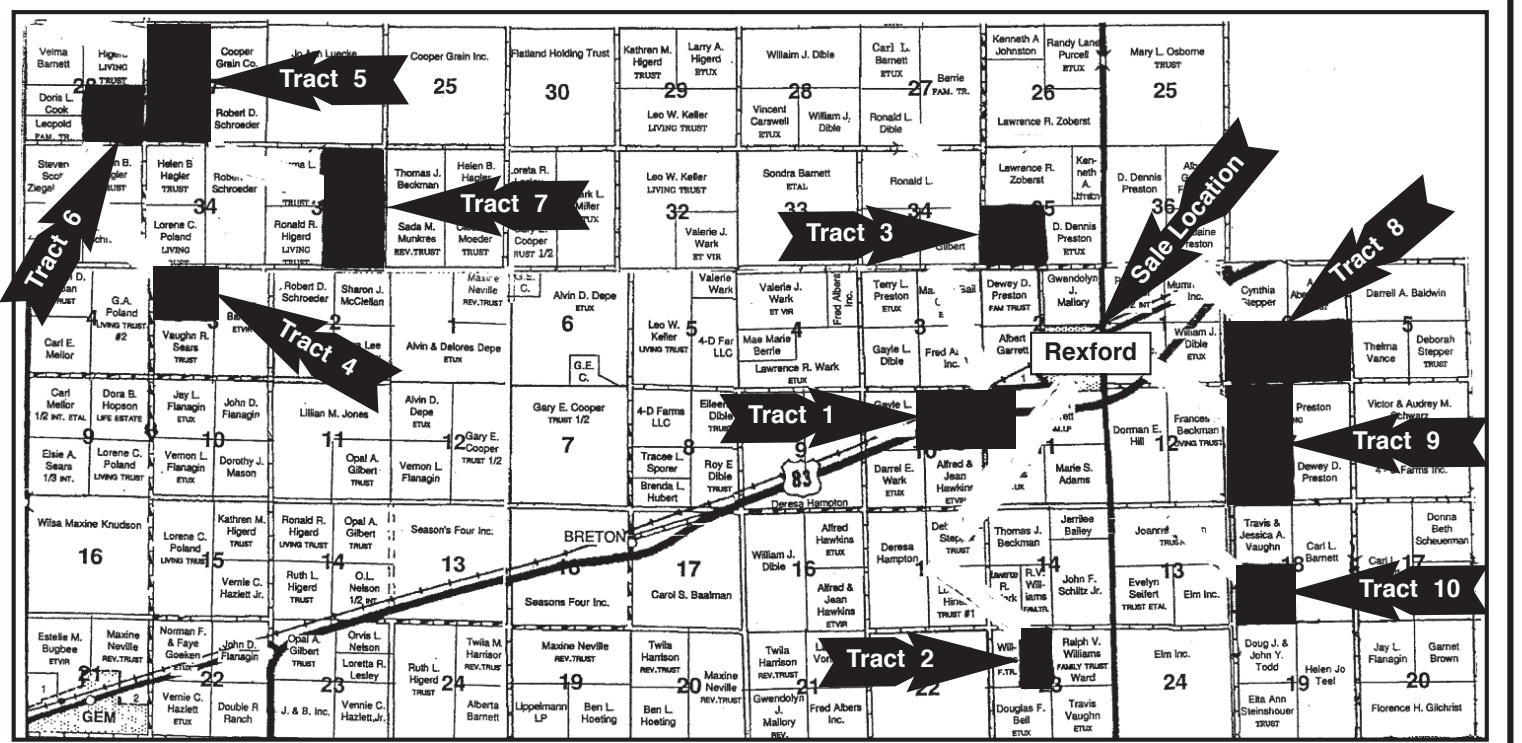
Colby Cinema

1935 S. Range • 785-460-9600
www.colbycinema.com

Got news?
Call 462-3963

LAND LEASE AUCTION

2150 Acres +/- Located in Sheridan and Thomas County, Kansas
Saturday, January 15, 2011 • Time: 2:00 p.m.
Owner: Ward J. Munkres Sale Location: Shepherd's Staff building, 225 Main St., Rexford, KS



Announcements made Day of Sale take precedence over printed material.

AUCTIONEER'S NOTE: This land is all prime cropland with no growing crops. There are only 80 acres that are terraced located in SW1/4 18-7S-30W, Sheridan County, Kansas. Anyone interested in adding to their operation with very productive farmland won't want to miss this auction. All the land has been maintained with no-till for the past 10 years.

LEASE: The leases will be auctioned for a five year lease, with a two year option after the five years. The first year's lease will be due day of auction, with following years' leases due on or before January 1 of each year. The leases will be auctioned in ten individual tracts. All leases will be sold as FSA cropland measurements. The lease for the last year must be negotiated before September 1, 2015.

AGENCY DISCLOSURE: Johnson Realty, Inc. and its agents are representing the Lessor and not representing the Lessee.
 Call Lynn A. Johnson, Johnson Realty, Inc. for more information. Office - 785-475-2785 or Lynn's cell - 785-475-8514.

Not responsible for accidents. All guarantees are between Lessor and Lessee.
 All inspections are the responsibility of the potential bidders, with no guaranties or warranties from the Lessor or Johnson Realty, Inc. and its agents. All information has been obtained from reliable sources.

<p>Tract 1: NE1/4 10-7-31 and W1/2NW1/4 11-7-31, Thomas County Cropland acres - 214.0 Wheat base acres171.0 Yield - 36 Grain Sorghum base acres43.0 Yield - 46</p>	<p>Tract 6: SE1/4 28-6-32, Thomas County Cropland acres 156.0 Wheat base acres74.5 Yield - 36 Grain Sorghum base acres42.8 Yield - 47</p>	<p>Tract 9: W1/2 7-7-30, Sheridan County Cropland acres - 299.0 Wheat base acres78.0 Yield - 36 Corn base acres145.8 Yield 124.0 Sunflowers base acres5.9 Yield 797.0 lbs.</p>
<p>Tract 2: E1/2NW1/4 23-7-31, Thomas County Cropland acres - 79.7 Wheat base acres37.6 Yield - 36</p>	<p>Tract 7: E1/2 35-6-32, Thomas County Cropland acres - 308.7 Wheat base acres146.6 Yield - 36 Grain Sorghum base acres84.4 Yield - 47</p>	<p>Tract 10: SW1/4 18-7-30, Sheridan County Cropland acres - 156.3 Wheat base acres78.5 Yield - 36 Grain Sorghum base acres33.4 Yield - 46 Barley base acres2.2 Yield - 40</p>
<p>Tract 3: SW1/4 35-6-31, Thomas County Cropland acres - 153.1 Wheat base acres5.8 Yield - 36 Grain Sorghum base acres33.4 Yield - 46 Barley acres6.1 Yield - 40</p>	<p>Tract 8: S1/2 6-7-30, Sheridan County Cropland acres - 305.9 Wheat base acres205.5 Yield - 37 Grain Sorghum base acres46.3 Yield - 48</p>	
<p>Tract 4: NW1/4 3-7-32, Thomas County Cropland acres - 160.9 Wheat base acres75.4 Yield - 36 Grain Sorghum base acres43.9 Yield - 47</p>		
<p>Tract 5: W1/2 27-6-32, Thomas County Cropland acres - 314.6 Wheat base acres155.9 Yield - 36 Grain Sorghum base acres90.0 Yield - 46 Barley base acres1.8 Yield - 40</p>		

CHECK OUT OUR WEB SITE AT: www.johnson-real-estate.com

Johnson Realty, Inc.

122 South Penn, Oberlin, KS 67749
 Roberta Johnson, Broker • Lynn A. Johnson, Associate Broker/Auctioneer
 Call Lynn A. Johnson for sale bill or information: 785-475-2785 • Mobile: 785-475-8514
 email: johnsonrealty1@yahoo.com

Joe D. Green, Salesperson/Auctioneer Roger Emigh, Salesperson/Auctioneer Randy Ostmeier, Salesperson
 David Juenemann, Salesperson Dianne Bremer, Oberlin, Salesperson Michael Wilson, Salesperson

getcaughtrecycling.org™

BUSINESS DIRECTORY

To have your ad placed in the Business Directory call Andrea or Kathryn today at 462-3963.

We make insurance simple.

1 premium policy deductible company agent

for simplified bill paying for your home, vehicles and other possessions for all covered possessions damaged in a single occurrence with a reputation of honesty and fair-dealing to handle it all for you

FARM BUREAU FINANCIAL SERVICES
 Insurance • Investments
 www.fbfs.com

Auto | Home | Life | Business | College | Retirement

Securities & services offered through EquiTrust Marketing Services, LLC, 5400 University Ave., West Des Moines, IA 50266, 577-660-2984. Member SIPC, Farm Bureau Property & Casualty Insurance Company, Western Agricultural Insurance Company, Farm Bureau Life Insurance Company, West Des Moines, IA. Affiliates Company providers of Farm Bureau Financial Services © 2010 FB, Financial Group, Inc. MCD11 (6-10)

David Browne III
550 N. Franklin
Colby, KS
(785) 462-3388

ROOFMASTERS

Your Local Roofing Contractor
 425 East Hill, Colby, KS
 Licensed - Bonded - Insured

<p>RESIDENTIAL Tamko Shingles GAF Shingles Wood Shingles Metal Roofs</p>	<p>1-800-536-6642 1-785-462-6642</p>	<p>COMMERCIAL Rubber Single Ply White TPO Single Ply Built Up Systems Modified Systems</p>
---	---	---

FREE ESTIMATES

Elastomeric Rubber Coating For Metal Roofs

NEW SYSTEM
PROFESSIONAL WINDOW CLEANING

(800) 611-6735

www.MyWindowCleaner.net
 Serving Colby since 1992!

Commercial • Residential • Free Estimates

18 Meadow Lake Golf Course & Restaurant

Winter Hours: Mon - Sat 11 a.m. - 12 p.m.
 Dining Hours: Lunch - 11 a.m. - 1:30 p.m.
 Evening Dining - Open at 5 p.m.

CLOSED ON SUNDAYS

Mondays: All you can eat Chili for \$5
 Monday Night Football
Saturdays: Prime Rib

*Salad bar & Dessert Friday & Saturdays Only

MEADOW LAKE GOLF COURSE & RESTAURANT

785-460-6443
 1085 E Golf Club Rd
 Colby

THOMAS County INSURANCE AGENCY

Serving NW Kansas for over 100 years.

Representing many companies to provide all your insurance needs:

- Home, Auto, Boat, Motorcycle, RV
- Farm and Crop Insurance
- Commercial Property, Automobiles
- General Liability, Workers Compensation
- Inland Marine, Builders Risk
- Auto Service Shops
- Body Shop and Collision Repair
- Contractors
- Restaurants
- Salons and Day Spas
- Strip Malls, Condominiums
- Churches, Schools, Day Care Centers

* For great coverage and customer service contact me!

Dennis R. Tubbs/Agent

P.O. Box 506 • 490 N. Franklin
 Ph: 785-462-3939 • Fax: 785-462-3752
 dtubbs@thomascountyins.com • www.thomascountyins.com

NEED EXTRA MONEY?

Be a Newspaper Carrier!

Check out all these GREAT Incentives!

- ★ Sign on bonus after 3 mo.
- ★ Bonus for new subscribers
- ★ Various sized routes
- ★ 1-2 hrs, 4 times a week
- ★ Weekends always off
- ★ Friendly customers

Call us or Stop by

COLBY FREE PRESS

155 W. 5th Street • 785.462.3963