

# Classifieds

To place your classified ad, mail (155 W. Fifth), fax (785-462-7749), phone (785-462-3963), or stop by our office at 155 W. Fifth

## Kansas Classified Network

**Help Wanted**  
Lab tech: MT or MLT (ASCP), progressive southeast Nebraska hospital, phlebotomy skills preferred. Competitive pay scale, excellent benefits. Send resume to: Sandy Bauer, Jefferson Community Health Center, P.O. Box 277, Fairbury, NE 68352.

**Help Wanted**  
Do you earn \$800.00 in a day? Your Own Local Candy Route 25 Machines and Candy All for \$9995.00 All Major Credit Cards Accepted 877-915-8222 Vend 3

**Help Wanted**  
"You got the drive, We have the Direction" OTR Drivers APU Equipped Pre-Pass EZ-pass Pets/passenger policy. Newer equipment. 100% NO touch. 1-800-528-7825

**Help Wanted**  
\*\* ABLE TO TRAVEL \*\* National Company Hiring 10 sharp People. Come train in Sunny Miami, FL. Free to travel all states. No experience necessary. Paid training/Transportation. OVER 18. 1-888-295-0108

## Real Estate

### Kevin Barnett Obtains Kansas Real Estate License

Stock Realty & Auction Company welcomes Kevin Barnett as a Real Estate Salesperson.

Kevin grew up as a farm kid on a dairy in Eastern KS, so he has been involved and knows farming and ranching practices. He and his wife, Kerie and four children reside in Oakley. Kevin is a member of Oakley Christian Church, he is a past deacon and trustee, Logan County Fair board member, 4-H and FFA.

Kevin is also a Territory Manager with Big Iron online auctions, a division of Stock Realty & Auction Co. By obtaining his real estate license, Kevin is looking forward to offering additional services to his customers.

To find out more about Stock Realty & Auction Co., visit [www.stockra.com](http://www.stockra.com) or call 1-800-WE SELL 8. You can also contact Kevin at 785-443-1722.

**STOCK REALTY & AUCTION CO.**

390 N. Franklin, Colby 785-460-SOLD (7653)



Use The Classifieds!

## Real Estate



From Don & the crew at Farm & Ranch

Front row - Cindy Hake, Neal Mann, Don Hazlett, Back row - Scotty Legere, Ed Currier, Steve Hazlett, Mike Bailey and Ron Evans, Not Pictured - Naomi Ward, J.D. Hinger, & James Hazlett

### 160 ACRE CROPLAND & FARMSTEAD - DECATUR CO, KS LAND AUCTION

TUES., FEB. 1, 2011 @ 10:30 AM, CST SELLER: GAUMER, INC.

**AUCTION LOCATION:**  
At the Farmstead located 8 miles South, 4 miles East & 1/2 mile South of Oberlin, KS

**OPEN HOUSE:**  
SUN., JAN. 23, 2011 - 1:00 TO 4:00 PM

NE/4 OF 16-4-28 - DECATUR COUNTY, KS



Selling in 2 tracts or combination - excellent for farm headquarters or hunting retreat! Improvements include 4 bedroom home, 60'x75' Butler shop, 40'x75' Butler building, and mature windbreak.

CALL MIKE BAILEY, LISTING AGENT AT 785-678-8082

#### ADDITIONAL UPCOMING AUCTIONS

03/19/11 - Doyle B. Schoen Trust Farm Machinery Auction - Lenora, KS  
03/26/11 - Spring Consignment - Call in your items early!!

CHEYENNE - 160 acres cropland & grass, SW/4 of 14-4-42, SW of St. Francis- JUST LISTED!  
GRAHAM - 200 ac grassland, live water, and expiring CRP, SE of Hill City- Abundant trees & picturesque spring fed creek!  
TREGO - 640 ac cropland & grass, E of Cedar Bluff reservoir

#### RESIDENTIAL LISTINGS



**JUST LISTED!!**

Wonderful 3 bedroom cottage home. Large room w/WB fireplace, bay window & patio access, basement plus 1-car attached garage  
PRICE: \$66,900



Ranch style home on 3.2 acres - 4 bedrooms, & finished basement. Second home for rental income potential, barn, outbuildings & established windbreak.  
PRICE: \$199,500

## FARM & RANCH REALTY, INC.

1977 - 2010

33+

YEARS OF EXPERIENCE EXPERTISE EXCELLENCE



1420 W. 4<sup>TH</sup> - P.O. BOX 947 COLBY, KS 67701 785-462-3904



DONALD L. HAZLETT, Broker



DON HAZLETT

[www.farmandranchrealty.com](http://www.farmandranchrealty.com)

The government wears many hats. We put them all in one place.



Looking for one place to get fast answers to your questions about government benefits and services? USA.gov is your official source for all federal, state and local government information. Now that's something you can hang your hat on.



1 (800) FED-INFO

## Real Estate

## HomeLand REALTY AUCTION

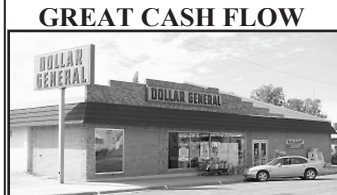
"Western Hospitality" [www.homelandre.com](http://www.homelandre.com)

1055 S. Range Colby, Kansas 785-462-8255



MAY BE LEASED

1675 W. 4th 6,000' office + 4,500' warehouse Give Pat a call today!!!



GREAT CASH FLOW

111 W. 3rd. Oakley, KS 10,000' w/ excellent tenant Call Rock today!!!

COMMERCIAL LOT 6.7 ac. adjacent to Wal-Mart with I-70 frontage, Colby, Kansas. \$670,000. Call Rock!  
INDUSTRIAL LOT 3.36 Ac. just off of I-70 Exit 53, Colby, KS Great building location! (UNDER CONTRACT)  
LOCATE to Colby's fastest growing Commercial area! I-70 frontage, 2-6 acre lots. Call Marilyn!  
410 N. Franklin Ideal office location, open floor plan, and newer roof. Possible financing or lease. Call Pat!  
1200 W 4th Colby, KS Very well established & turn key business. \$195,000!!! Call Tom!  
1690 W. 4th \$160,000 Dental care office with over 2,100 sq. ft. Very well maintained! Call Marilyn today!

**COUNTRY CHARM**

540 WOOFER AVE.  
3 bdrm/3 bath—great floor plan  
Call Pat today!!!

WE APPRECIATE YOUR BUSINESS & WISH YOU THE VERY BEST IN 2011!

**\$7,000 ALLOWANCE**

310 S. Garfield \$135,000  
5 bdrm/3 bath. Room to grow!  
Give Marilyn a call!!!

**FIRST TIME OFFERED!**

955 PRAIRIE VIEW  
Solar efficient. 3 bdrm/2-1/2 bath  
Call Pat for your tour!!!

**GREAT STARTER HOME**

570 S. Grant \$54,000  
3 bdrm/1 bath single level home  
Call Marilyn to view today!

**2 HOMES/1 PRICE!**

114 & 114 1/2 Pennsylvania Jennings, KS - Great 4 hunting!  
Give Tom a call today!!!

Inventory is low - WE WANT YOUR HOMES & COMMERCIAL LISTINGS. Give us a call and let our team of experienced realtors provide you with a free market analysis. **HOMELAND- A TEAM WORKING FOR YOU!**

114 S Pennsylvania, Jennings \$30,000	1125 Brookside Dr. \$79,500	180 E. Cherry CONTRACT \$128,900
101 S. Adams, Grinnell \$50,000	605 Longview, Oakley \$79,500	670 N. Lincoln \$128,900
570 S. Grant \$54,000	1385 W. 1st CONTRACT \$85,500	310 S. Garfield \$7,000 Allowance!
410 Converse, Oakley \$55,000	540 W. 4th \$85,500	404 Smith Dr \$179,500
515 W. 7th CONTRACT \$65,000	725 Cherokee Dr. \$92,000	955 Prairie View \$197,500
765 S. Range \$69,000	210 W 5 <sup>th</sup> \$96,000	540 Woofler LOWERED PRICE
105 S. Illinois, Selden \$69,000	685 W. Cherry CONTRACT \$128,900	328 Maple, Oakley Dreamer's Delight
1320 W 5 <sup>th</sup> CONTRACT \$69,000	460 W 4 <sup>th</sup> CONTRACT \$128,900	

LAND LISTINGS - 33.3 ACRES THOMAS COUNTY land. Highway 83 frontage. Ideal business location on the North edge of Oakley, Kansas. I-70 within 5 miles. (Can be split.) Call Jerry!  
480 Acres Rawlins County Cropland & Grass Northeast of Gem, Kansas. \$825/Acre. (UNDER CONTRACT)  
NEW!!!! 320 Acres Thomas County Irrigated SE of Colby, KS. (SOLD)  
NEW!!!! 160 Acres Thomas County Irrigated SE of Colby, KS. (SOLD)  
320 ACRES WALLACE CO. CRP & Grass NW Sharon Springs, Kansas (SOLD)  
480 AC. LOGAN CO sprinkler irrigated 1 mile N of Page City, Ks. 3 wells & 3 sprinklers. (SOLD)

**WE WANT YOUR LAND LISTINGS - WE SELL!!!**

Join the Sellers that list with HomeLand Realty & Auction  
Your Home, along with many other listings, will be viewed nationally.  
Pat Sloan 785-443-3261  
Marilyn Meyer 785-462-2703  
Toni Lindberg 785-443-4032  
office@homelandre.com  
Rock L. Bedore 785-443-1653  
Tom Harrison 785-443-0136  
Jerry Wycoff 785-672-0429

## GAMEFLY.COM

### VIDEO GAME RENTALS DELIVERED TO YOUR DOOR

Free Shipping • No Late Fees • Cancel Anytime  
New Releases and Classic Games

EXTENDED FREE TRIAL\*

SIGN UP AT

[www.gamefly.com/print](http://www.gamefly.com/print)

ENTER CODE: NEWS73

XBOX 360 PLAYSTATION 3 Wii

\*New members only. Free trial valid in the 50 United States only, and cannot be combined with any other offer. Limit one per household. First-time customers only. Internet access and valid payment method required to redeem offer. Gamefly will begin to bill your payment method for the plan selected at sign-up at the completion of the free trial unless you cancel prior to the end of the free trial. Plan prices subject to change. Please visit [www.gamefly.com/terms](http://www.gamefly.com/terms) for complete Terms of Use. Free Trial Offer expires 12/31/2010.

Molly J. Oliver  
462-5203

Terry Stover  
626-2082

Kevin Barnett  
443-1722

 Great Value 3 BR Plus Grg 815 E. 8th \$35,000	 Move - In Enjoy 3 BR, 1 Bath & Grg 1110 Summer Sun \$67,900	 Country/City Spacious Home, 2+ Acres 1473 Pioneer Dr. \$115,500	 Come See Me Brick 2 - Story 355 W. 5th \$119,900
 Lower Price Brick 5 BR, 2 Bath 855 S. Court \$117,500	 Contemporary Home Great Features 1125 Wheatridge \$152,000	 Selden, KS 3 BR Home Call Terry \$54,900	 Lower Price 5.7 Acres w/Improvements 194 Co. Rd. 3 \$159,900
 Cheyenne Co. 325 +/- Acres Newer Home	 Thomas Co. 555 +/- Irrigated Land Call Molly	 Call Terry on this great Commercial Property 1180 W. 4th	<b>Thinking About Selling? Let a Solid Real Estate Team Work for You!</b>

Stock Realty & Auction Co. 390 N. Franklin Ste. 100 • Colby, KS 67701 • [www.stockra.com](http://www.stockra.com) (785) 460-7653