

To place your classified ad, mail (155 W. Fifth), fax (785-462-7749), phone (785-462-3963), or stop by our office at 155 W. Fifth

## Mobile Home for Rent

**Mobile Home Court Lots** for rent in colby. Call Shawn at 719-342-0654.  
---11/3---1/24---

## Land for Sale

**Twelve Acres** with modest home; six miles east of Sharon Springs. 785-891-3584.  
---1/10---1/28---

## Misc. for Sale

**2 complete twin beds** with electric controls. Can be a king size, in great shape. \$175 Call 785-460-2259.  
---1/12---1/17---

**Used Gulbransen Piano** Call 785-460-2527 or 785-443-3712.  
---1/12---1/17---

**Older Zenith TV 32"** \$50. Nice Maytag glass-top stove with convection oven \$200. 785-460-9022.  
---1/10---1/14---

## Wanted

**Wanted: Schwinn AiDyne** exercise bikes in good condition. Reasonable prices paid, we will even move them out of your basement! 785-410-3672.  
---1/5---1/17---

## Vehicles for Sale

**1979 Lincoln \$1,100** Runs and drives good. Collector's car. Call 785-671-1082 to view.  
---1/14---1/27---

**2002 Ford F250** crew cab pickup, 4x4, 7.3 diesel, all new tires, new batteries, 162,000 miles. \$14,000 OBO. Good Truck. 785-626-9050.  
---1/10---1/21---

**2006 Ford Taurus** Sun roof please call 785-460-7859 or 785-269-7232.  
---1/5---1/19---

**Use the Classifieds!**

## Services

**Psychic Consultations.** 785-443-5957.  
---1/10---1/14---

**S&S Cleaning Service** Do you need your house or business cleaned? Contact Susan at 785-462-5777, 8 a.m. - 5 p.m., Mon. - Fri. Colby area only.  
---12/27---2/4---

**Tired of leaks** every time it rains? Frustrated with the bucket brigade? Murray Roofing. 780 E. 4th, Colby. 1-800-794-3204 or 785-462-6908.  
---3/18---TFN---

**Free Estimates on** all kinds of roofs. Murray Roofing. 780 E. 4th, Colby. 1-800-794-3204 or 785-462-6908.  
---3/18---TFN---

**Free Estimates on** vinyl siding, windows, doors, and insulation. Murray Construction. 780 E. 4th, Colby. 1-800-794-3204 or 785-462-6908.  
---3/18---TFN---

## Garage Sales

**Multi-Family Garage Sale** Saturday, Jan. 15 at Colby Sacred Heart School Gym 1150 W. 6th, 7:30 a.m. - 4:30 p.m. "Vendor fair" style, each family will have a group of tables and will be responsible for their own items and cash box. Set-up will begin Friday evening. **Contact Brenda Mazanec at 785-462-2098** if you would like a space. Already listed: NEW Revo Mobility Scooter! Some furniture and lots of misc. **Please use SOUTH gym door entrance.**  
---1/12---1/14---

**College Students** - Decent furniture for your dorm, very low prices. 785-443-5889.  
---1/10---1/14---

## Services

**PART INFO GETTING PLUS PART IDEA SHARING**

Equals total government connecting.

Get info. Find answers. Share ideas. Your connection begins at USA.gov - the official source for federal, state and local government information.

**USA.gov**  
1 (800) FED-INFO

## Real Estate

# FARM & RANCH REALTY, INC.

1977 - 2011  
**33+**  
YEARS OF  
EXPERIENCE  
EXPERTISE  
EXCELLENCE

1420 W. 4<sup>TH</sup> - P.O. BOX 947  
COLBY, KS 67701  
785-462-3904  
**DONALD L. HAZLETT, Broker**



**DON HAZLETT**

[www.farmandranchrealty.com](http://www.farmandranchrealty.com)

WE INVITE YOU TO TALK TO ONE OF OUR REAL ESTATE PROFESSIONALS!

Naomi Ward • Steve Hazlett • Ron Evans • Ed Currier • Neal Mann • Mike Bailey • Scotty Legere

**160 ACRES CROPLAND & FARMSTEAD LAND AUCTION**  
**DECATUR COUNTY, KANSAS**  
**TUES., FEB. 1, 2011 @10:30 AM, CST**

**AUCTION LOCATION:** At the Farmstead located 8 miles South, 4 miles East & ½ mile South of Oberlin, KS

**SELLER:** GAUMER, INC.  
**NE/4 OF 16-4-28**  
Selling in 2 tracts & combo

**TRACT 1:** 7.0± ac w/improvements  
**TRACT 2:** 153.0± excellent cropland acres

Excellent for farm headquarters or hunting retreat! Improvements include 4 bedroom home with 60'x75' Butler shop, 40'x75' Butler building, and mature windbreak.

**OPEN HOUSE:**  
**SUNDAY, JAN. 23, 2011**  
**FROM 1:00 TO 4:00 PM**  
**MIKE BAILEY, LISTING AGENT**

**800 ACRES CROPLAND LAND AUCTION**  
**LOGAN COUNTY, KANSAS**  
**FRI., FEB. 4, 2011 @10:30 AM, CST**

**AUCTION LOCATION:** Community Room in Courthouse basement - Oakley, KS

**SELLER:** Estate of Marlin D. Leonard

Land will sell in 2 individual tracts

**Legal Descriptions:**

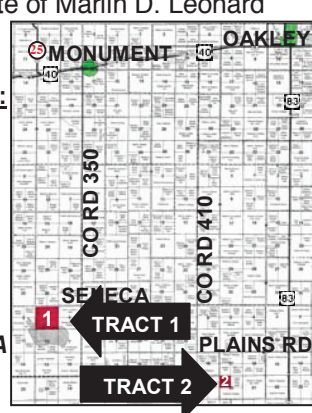
**TRACT 1:** All of Section 1-13-34

**TRACT 2:** NW/4 of 20-13-32 - All in wheat w/landlord's 1/3<sup>rd</sup> share going to the Buyer.

**LOCATED IN AREA OF NEW OIL PRODUCTION!**

Minerals are 100% intact and go to the Buyer!

**INTERNET BIDDING AVAILABLE!**



## OTHER UPCOMING AUCTIONS

- 02/15/11 - 180 ac grassland just N of Hays for Diamond P Trust
- 03/19/11 - Doyle B. Schoen Trust Farm Machinery Auction - Lenora - CONSIGNMENTS WELCOME!!
- 03/26/11 - Spring Consignment - Call in your items early!!

## REAL ESTATE FOR SALE

- GRAHAM** - 200 ac grassland, live water, and expiring CRP, SE of Hill City, KS - Abundant trees & picturesque spring fed creek!
- TREGO** - 640 ac cropland & grass, E of Cedar Bluff reservoir

**NEW LISTING**

**765 W. Summit**  
Wonderful 3 bedroom cottage home. Large room w/WB fireplace, bay window & patio access, basement plus 1-car attached garage.  
**PRICE: \$66,900**

**\*\*CHECK OUR WEBSITE FOR ADDITIONAL LISTINGS & VIRTUAL TOURS!\*\***

**"When you list with Farm & Ranch, it's as good as SOLD!"**



COMMERCIAL LOT 6.7 ac. adjacent to Wal-Mart with I-70 frontage, Colby, Kansas. \$670,000. Call Rock!  
INDUSTRIAL LOT 3.36 ac. just off of I-70 Exit 53, Colby, KS Great building location! (UNDER CONTRACT)  
LOCATE to Colby's fastest growing Commercial area! I-70 frontage, 2-6 acre lots. Call Marilyn!  
410 N. Franklin Ideal office location, open floor plan, and newer roof. Possible financing or lease. Call Pat!  
1200 W 4th Colby, KS Very well established & turn key business. \$195,000!!! Call Tom!  
1690 W. 4th \$160,000 Dental care office with over 2,100 sq. ft. Very well maintained! Call Marilyn today!

**GREAT CASH FLOW**



**111 W. 3rd. Oakley, KS**  
10,000' w/ excellent tenant  
Call Rock today!!!

**MAY BE LEASED**



**1675 W. 4th**  
6,000' office + 4,500' warehouse  
Give Pat a call today!!!

**COUNTRY CHARM**



**540 WOOFER AVE.**  
3 bdrm/3 bath—great floor plan  
Call Pat today!!!

**FIRST TIME OFFERED! SOLAR EFFICIENT!**



**955 PRAIRIE VIEW**  
A must see! 3 bdrm/2-1/2 bath  
Call Pat for your tour!!!

**\$7,000 ALLOWANCE**



**310 S. Garfield \$135,000**  
5 bdrm/3 bath. Room to grow!  
Give Marilyn a call!!!

**MOVE-IN READY!!!**



**605 Longview, Oakley**  
4 bdrms/2 baths, 1 car attached garage  
Give Jerry a call!!!

**ROOM TO EXPAND!!!**



**765 S. Range \$65,000**  
4 bdrms/3 baths. Main floor laundry.  
Call Pat!!!

**GREAT STARTER HOME**



**570 S. Grant \$54,000**  
3 bdrm/1 bath single level home  
Call Marilyn to view today!

**Inventory is low - WE WANT YOUR HOMES & COMMERCIAL LISTINGS. Give us a call and let our team of experienced realtors provide you with a free market analysis. HOMELAND- A TEAM WORKING FOR YOU!**

114 S Pennsylvania, Jennings \$30,000	1320 W 5 <sup>th</sup>	CONTRACT	460 W 4 <sup>th</sup>	CONTRACT
728 S. 9th, Oakley NEW \$42,900	1125 Brookside Dr.	CONTRACT	180 E. Cherry	CONTRACT
411 Illinois, Brewster NEW \$45,000	605 Longview, Oakley	\$79,500	670 N. Lincoln	\$128,900
101 S. Adams, Grinnell \$50,000	1385 W. 1 <sup>st</sup>	CONTRACT	310 S. Garfield	\$7,000 Allowance!!
570 S. Grant \$54,000	540 W. 4th	\$85,500	404 Smith Dr	\$179,500
410 Converse, Oakley \$55,000	725 Cherokee Dr.	\$92,000	955 Prairie View	\$197,500
765 S. Range \$65,000	210 W 5 <sup>th</sup>	\$96,000	540 Woofter	LOWERED PRICE
105 S. Illinois, Selden \$69,000	685 W. Cherry	CONTRACT	328 Maple, Oakley	Dreamer's Delight

LAND LISTINGS - NEW!!! 146 ACRES THOMAS COUNTY, KS irrigated with 5 year cash lease. 7 miles North & 1 mile West of Rexford, Kansas. \$3,000/Acre. Call Rock L. Bedore 785-443-1653

33.3 ACRES THOMAS COUNTY land. Highway 83 frontage. Ideal business location on the North edge of Oakley, Kansas. I-70 within 5 miles. (Can be split.) Call Jerry! 785-672-0429

480 Acres Rawlins County Cropland & Grass Northeast of Gem, Kansas. \$825/Acre. (SOLD)

**WE WANT YOUR LAND LISTINGS - WE SELL!!!**

Join the Sellers that list with HomeLand Realty & Auction  
Your Home, along with many other listings, will be viewed nationally.

Pat Sloan 785-443-3261	office@homelandre.com	Rock L. Bedore 785-443-1653
Marilyn Meyer 785-462-2703		Tom Harrison 785-443-0136
Toni Lindberg 785-443-4032		Jerry Wycoff 785-672-0429











Looking for one place to get answers to your questions about government benefits and services? USA.gov has you covered. It's your official source for government information.

**USA.gov**  
1 (800) FED-INFO

**Stock Realty & Auction Co.**  
390 N. Franklin Ste. 100  
Colby, KS 67701  
(785) 460-7653  
[www.stockra.com](http://www.stockra.com)



**Molly J. Oliver**  
462-5203

			
JUST LISTED Brick 4 BR - 2 bath Deck - Hot Tub & Home 985 E. 6th \$106,500	Fantastic Home Brick 5 BRs - 2 bath Full Finish Bsmt 855 S. Court \$117,500	A "Little" Country Home on 5.7 Acres Good Oil Roads Brewster KS \$159,900	Brewster KS Move-in & Affordable grg/shop & more Brewster \$47,000
			
Great Value 3 BR - 1 bath Newer windows 815 E. 8th \$35,000	Want Space? Call Molly Today New home on 2+ acres 1473 Pioneer Dr. \$115,500	Exclusive Listing Contemporary Home Upgrades... 1125 Wheatridge \$149,500	Traditional Charming Brick 5 BR Great Location 355 W. 5th \$119,900

# Get Caught

## getcaughtrecycling.org

Use The Classifieds Today! 