

To place your classified ad, mail (155 W. Fifth), fax (785-462-7749), phone (785-462-3963), or stop by our office at 155 W. Fifth

## Services

**Trenching & Back-hoe work** General construction, plumbing & septic work, Wallace & Thomas counties. 785-462-8674 or cell, 785-443-5741.  
---1/19---2/14---

**Do Your Feet Hurt?** We can help with 1-step Technology. We also provide medicare approved diabetic shoes up to size 15 with doctor's prescription by appointment only. Currier Drug, Inc., Atwood. 1-800-696-3214.  
---1/17---1/21---

**Chimney Cleaning.** Call Troy or Jennifer for an appointment. 785-462-0320 or 785-462-0310.  
---1/17---1/28---

## Services

**S&S Cleaning Service** Do you need your house or business cleaned? Contact Susan at 785-462-5777, 8 a.m. - 5 p.m., Mon. - Fri. Colby area only.  
---12/27---2/4---

**Tired of leaks** every time it rains? Frustrated with the bucket brigade? Murray Roofing. 780 E. 4th, Colby. 1-800-794-3204 or 785-462-6908.  
---3/18---TFN---

**Free Estimates on** all kinds of roofs. Murray Roofing. 780 E. 4th, Colby. 1-800-794-3204 or 785-462-6908.  
---3/18---TFN---

## Services

**Free Estimates on** vinyl siding, windows, doors, and insulation. Murray Construction. 780 E. 4th, Colby. 1-800-794-3204 or 785-462-6908.  
---3/18---TFN---

## Pets/Supplies

**Cute pure bred border collie** puppies. Wormed and shots. Call 785-462-2186.  
---1/17---1/21---



## Real Estate

# FARM & RANCH REALTY, INC.

1977 - 2011  
**34+**  
YEARS OF  
EXPERIENCE  
EXPERTISE  
EXCELLENCE

1420 W. 4<sup>TH</sup> - P.O. BOX 947  
COLBY, KS 67701  
785-462-3904  
DONALD L. HAZLETT, Broker

[www.farmandranchrealty.com](http://www.farmandranchrealty.com)

WE INVITE YOU TO TALK TO ONE OF OUR REAL ESTATE PROFESSIONALS!

Naomi Ward • Steve Hazlett • Ron Evans • Ed Currier • Neal Mann • Mike Bailey • Scotty Legere

## 160 ACRES CROPLAND & FARMSTEAD LAND AUCTION DECATUR COUNTY, KANSAS TUES., FEB. 1, 2011 @ 10:30 AM, CST

**AUCTION LOCATION:** At the Farmstead located 8 miles South, 4 miles East & 1/2 mile South of Oberlin, KS

**SELLER:** GAUMER, INC.  
NE/4 OF 16-4-28  
Selling in 2 tracts & combo

**TRACT 1:** 7.0± ac w/improvements  
**TRACT 2:** 153.0± excellent cropland acres  
Excellent for farm headquarters or hunting retreat! Improvements include 4 bedroom home with 60'x75' Butler shop, 40'x75' Butler building, and mature windbreak.

**OPEN HOUSE: SUN., JAN. 23, 2011  
FROM 1:00 TO 4:00 PM**

MIKE BAILEY, LISTING AGENT

## 800 ACRES CROPLAND LAND AUCTION LOGAN COUNTY, KANSAS FRI., FEB. 4, 2011 @ 10:30 AM, CST

**AUCTION LOCATION:** Community Room in Courthouse basement - Oakley, KS

**SELLER:** Estate of Marlin D. Leonard

Land will sell in 2 individual tracts

**Legal Descriptions:**

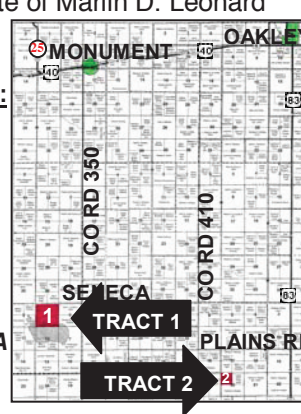
**TRACT 1:** All of Section 1-13-34

**TRACT 2:** NW/4 of 20-13-32 - All in wheat w/landlord's 1/3<sup>rd</sup> share going to the Buyer.

**LOCATED IN AREA OF NEW OIL PRODUCTION!**

Minerals are 100% intact and go to the Buyer!

INTERNET BIDDING AVAILABLE!



## LAND AUCTION

800 ACRES CRP & GRASS  
WICHITA & WALLACE CO, KS & CHEYENNE CO, COLORADO  
Fri, Feb. 18, 2011 @ 10:30AM, MST

**AUCTION LOCATION:** Parish Hall, Sharon Springs

**Sellers:** Joan Holmes & Carol Patterson

**TRACT 1:** NE/4 of 6-17-37, Wichita Co, KS  
**TRACT 2:** SE/4 of 32-14-38, Wallace Co, KS  
**TRACT 3:** N/2 of 32-14-38, Wallace Co, KS  
**TRACT 4:** NW/4 of 2-13-46, Cheyenne Co, Colo

100% of 2011 CRP payments going to the Buyer(s)

## OTHER UPCOMING AUCTIONS

02/22/11 - 180 ac grassland just N of Hays- for Diamond P Trust

03/19/11 - Doyle B. Schoen Trust Farm Machinery Auction - Lenora - CONSIGNMENTS WELCOME!!

03/26/11 - Spring Consignment - Call in your items early!!

**\*\*CHECK OUR WEBSITE FOR ADDITIONAL LISTINGS & VIRTUAL TOURS!\*\***

**"When you list with Farm & Ranch, it's as good as SOLD!"**

## Real Estate

### ABUNDANCE OF SPACE!



**404 Smith Dr.**  
3 bdrm/2 bath w/ open floor plan  
Call Pat for your tour!

### ENDLESS POSSIBILITIES



**670 N. Lincoln**  
3 bdrms/3 baths—4,000+ sq ft  
Call Pat!!!

### GREAT LOCATION!



**326 Freeman, Oakley**  
4 bdrms/2 baths. Lots of room!  
Give Jerry a call today!

### GARAGE PROVIDES GREAT SHOP SPACE!



**725 Cherokee**  
4 bedroom/2 bath home.  
Give Pat a call today!

**Inventory is low - WE WANT YOUR HOMES & COMMERCIAL LISTINGS.** Give us a call and let our team of experienced realtors provide you with a free market analysis.  
**HOMELAND- A TEAM WORKING FOR YOU!**

114 S. Pennsylvania, Jennings	\$30,000	1320 W 5 <sup>th</sup>	CONTRACT	460 W 4 <sup>th</sup>	CONTRACT
728 S. 9th, Oakley	\$42,900	1125 Brookside Dr.	CONTRACT	180 E. Cherry	CONTRACT
411 Illinois, Brewster	\$45,000	605 Longview-Oakley	\$79,500	670 N. Lincoln	\$128,900
101 S. Adams, Grinnell	\$50,000	1385 W. 1 <sup>ST</sup>	CONTRACT	310 S. Garfield	\$7,000 Allowance!!
570 S. Grant	\$54,000	540 W. 4 <sup>th</sup>	\$85,500	404 Smith Dr.	\$179,500
410 Converse, Oakley	\$55,000	725 Cherokee Dr.	\$92,000	431 Smith Dr.	NEW \$191,500
326 Freeman, Oakley	NEW \$59,000	210 W 5 <sup>th</sup>	\$96,000	955 Prairie View	\$197,500
765 S. Range	\$65,000	685 W Cherry	CONTRACT	540 Wootter	LOWERED PRICE
105 S. Illinois, Selden	\$69,000			328 Maple-Oakley	Dreamer's Delight

**LAND LISTINGS - NEW!!! 146 ACRES THOMAS COUNTY, KS** irrigated with 5 year cash lease. 7 miles North & 1 mile West of Rexford, Kansas. \$3,000/Acre. Call Rock L. Bedore 785-443-1653

**33.3 ACRES LOGAN COUNTY** land. Highway 83 frontage. Ideal business location on the North edge of Oakley, Kansas. I-70 within 5 miles. (Can be split.) Call Jerry Wycoff 785-672-0429

## WE WANT YOUR LAND LISTINGS - WE SELL!!!

**POSSIBLE LEASE**

**410 N. Franklin**  
Ideal office location, open floor.  
Call Pat for details!!!

**TURN-KEY BUSINESS!**

**1200 W. 4th**  
Very well established  
Give Tom a call today!!!

**SELLER WOULD LOOK AT A LEASE**

**1690 W. 4th**  
Very well maintained dental office  
Call Marilyn today!!!

Join the Sellers that list with HomeLand Realty & Auction  
Your Home, along with many other listings, will be viewed nationally.

Pat Sloan 785-443-3261  
Marilyn Meyer 785-462-2703  
Toni Lindberg 785-443-4032

Rock L. Bedore 785-443-1653  
Tom Harrison 785-443-0136  
Jerry Wycoff 785-672-0429

The government wears many hats. We put them all in one place.

Looking for one place to get fast answers to your questions about government benefits and services? USA.gov is your official source for all federal, state and local government information. Now that's something you can hang your hat on.

USA.gov  
1 (800) FED-INFO

## Real Estate

**SPECIAL DELIVERY!**

Get this "special delivery" right on your doorstep

for just pennies a day!!

**CALL US AT 785-462-3963 FOR DETAILS!!**

**THE COLBY FREE PRESS**

**BEAUTIFUL SPLIT-LEVEL!**

**431 Smith Dr. \$191,500**  
5 bedroom/3 bath home featuring a spacious living room complete with a wood burning fireplace, kitchen leading to the formal dining room, spacious corner lot & fenced-in backyard.  
Call Tom or Toni today!!!  
Tom 443-0136  
Toni 443-4032

**United Country HomeLand REALTY AUCTION**  
"Western Hospitality"  
1055 S. Range 462-8255  
[www.homelandre.com](http://www.homelandre.com)

**Molly J. Oliver**  
462-5203

**Terry Stover**  
626-2082

**Kevin Barnett**  
443-1722

**Stock Realty & Auction Co.** 390 N. Franklin Ste. 100 • Colby, KS 67701 • [www.stockra.com](http://www.stockra.com) (785) 460-7653

## Real Estate

New Listing 2-3 BR, 2 bath 550 N. School \$59,900	Edge of Colby 4 BR on 2 +/- acres 1473 Pioneer Dr. \$115,500	Brick 5 BR Lovely finished Bsmt 855 S. Court \$117,500	NEWER Listing Brick, deck & hot tub 985 E. 6th
Country Home 5 +/- acres Brewster Area	Blend of old & new 5 BR brick 2-story 355 W. 5th \$119,900	Come Buy Me 3 BR Cottage 815 E. 8th \$36,000	Brewster Home 3BR - oversized grg 309 Rock Island \$47,000
			<b>NOW IS THE TIME TO SELL!!</b>
Cheyenne Co. 325 +/- Acres Cheyenne County	555 +/- Acres Good Irrigated Land Thomas County	Sandwich Shop Investment Opportunity Priced at \$24,900	

**Colorectal cancer is the second leading cancer killer in the U.S., but it is largely preventable.** If you're 50 or older, please get screened. Screening finds precancerous polyps, so they can be removed before they turn into cancer. And screening finds colorectal cancer early, when treatment works best. If you're at increased risk—if you have a personal or family history of polyps or colorectal cancer, or you have inflammatory bowel disease—ask your doctor when to start screening.

Screening saves lives.

**Screen for life**  
National Colorectal Cancer Research Alliance  
Entertainment Industry Foundation Program

**Stand Up to Cancer**

This is personal.

"My mother was the cornerstone of our family. When she was diagnosed with colon cancer, it was like the whole family got cancer. She died when she was only 56. Let my heartbreak be your wake-up call!"  
Terence Howard, actor/musician

U.S. DEPARTMENT OF HEALTH AND HUMAN SERVICES  
Centers for Disease Control and Prevention

**CDC**  
SAFER • HEALTHIER • PEOPLE

1-800-CDC-INFO (1-800-232-4636) • [www.cdc.gov/screenforlife](http://www.cdc.gov/screenforlife)