

Student News

Colby Public Schools
Activities: Monday: 4, 5:30 p.m. softball, Russell. **Tuesday:** 8 a.m. to 5 p.m., 6 to 9 p.m. high school art show, commons. 2 p.m. high school student awards assembly, auditorium; 2 p.m. junior varsity golf vs. Brewster, Goodland Sugar Hills; 6:30 p.m. senior awards night, high school auditorium; 7:30 p.m. high school pops concert, auditorium. **Wednesday:** seniors' last day; National School Nurse Day; 8 a.m. baseball/softball all league selection, Scott City; 9 a.m. Great West Activity Conference League, Scott City; 3:45 p.m. golf team pictures, golf course; 4:15 p.m. tennis team pictures, city courts. **Thursday:** 6 to 8 p.m. grade school art show, grade school; 3 p.m. varsity golf, Goodland; 3 p.m. varsity track, Holcomb; 4, 6 p.m. baseball vs. Thomas More Prep-Marian; 7:30 p.m. middle school vocal concert, grade school auditorium. **Friday:** kindergarten picnic, Fike Park; varsity tennis state; 3:45 p.m. baseball team pictures, recreation fields; 4:15 p.m. softball team pictures, recreation fields; 6:30 p.m. cheerleading tryouts auditorium. **Saturday:** college graduation; middle school band and choir Denver trip; varsity tennis, state. **Sunday:** 1:30 p.m. baccalaureate, community building; 3 p.m. commencement, community building.

Menus: Monday: breakfast: long john, pineapple slices; hot dogs, French fries, cooked carrots, oranges. **Tuesday:** breakfast: cereal apple wedges; taco pie, corn, rice, hot rolls, pineapple. **Wednesday:** breakfast: pancake and sausage on a stick, orange juice; quesadilla, cucumber, dip, tossed salad, bread sticks, strawberries. **Thursday:** breakfast: French toast sticks, grape juice; chicken nuggets, potatoes, gravy, mixed veggies, peaches. **Friday:** breakfast: toast, cereal, apple juice; turkey sandwich, curly fries, green beans, banana.

Sacred Heart
Activities: Monday: 6:30 p.m. home and school. **Tuesday:** kindergarten picnic. **Wednesday:** preschool conferences; 10:15 a.m. first and second grade trip to park. **Thursday:** preschool conferences; field day. **Friday:** preschool conferences; fifth grade sending forth ceremony; Trails West; last day of school, no white bus. **Saturday:** Trails West.

Menus: Monday: breakfast, scrambled eggs, sausage, hash browns, muffins, orange. **Tuesday:** cooks choice. **Wednesday:** pizza, veggie, fruit. **Thursday:** field day, hot dogs, veggies, fruit. **Friday:** sack lunches, ham sandwiches, veggie, fruit, cookie.

Heartland
Activities: Wednesday: se-

nior's last day. **Friday:** track, Scott City.

Golden Plains
Activities: Tuesday: National Honor Society Playday at Selden; 7 p.m. eighth grade graduation, middle school awards. **Wednesday:** 9 a.m. hearing checks; 1 p.m. second through fifth grade party, Shepherds Staff. **Thursday:** 2 p.m. kindergarten graduation; 6:30 p.m. awards banquet, Parish Hall; last day of school. **Friday:** 9:30 a.m., 3 p.m. middle school and high school league track, Scott City; no school.

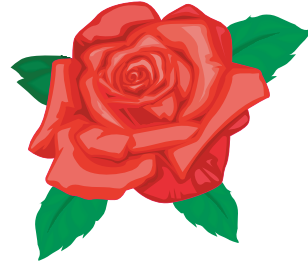
Menus: Rexford: cook's choice.
Selden: Monday: lunch: taco salad. **Tuesday:** lunch: hamburgers and hot dogs. **Wednesday:** lunch: cook's choice. **Thursday:** lunch: pizza.

Brewster
Activities: Monday: 3 p.m. high school track, Stockton (Palco meet). **Tuesday:** 2 p.m. Brewster invitational golf tournament. **Thursday:** 3 p.m. high school golf, Greeley County; last day for eighth grade and seniors. **Friday:** no school; 9:30 a.m. Freedom League track meet, Scott City; 3 p.m. West Kansas Liberty League track meet, Scott City. **Saturday:** 10 a.m. eighth grade graduation; 2 p.m. baccalaureate; 4 p.m. high school graduation.

Menus: Monday: breakfast: pancake, sausage; lunch: spaghetti, meat sauce, green beans, fruit.

Tuesday: breakfast: blueberry muffin; lunch: taco. **Wednesday:** breakfast: sausage gravy, biscuit; lunch: chicken patty, veggies, fruit. **Thursday:** breakfast: French toast sticks; lunch: hamburger, seven-layer salad, baked beans.

Colby Community College
Activities: Saturday: track region championships, Coffeyville; baseball region first round; softball regional tournament, Wichita; equestrian Devon Felts, nationals, Lexington, Ky. **Sunday:** track, region championships, Coffeyville; baseball region first round; softball regionals, Wichita. **Monday:** library items due. **Wednesday:** finals. **Thursday:** finals; 6:30 p.m. athletic banquet, Student Union 108. **Friday:** finals; women's track, Bethany Community College, Lindsborg. **Saturday:** 10 a.m. nurses' pinning ceremony, Colby Community Building; 2 p.m. commencement, community building; following graduation - commencement reception, Student Union cafeteria; baseball regional second round, Wichita.



Senior Progress Center

Flowers can be donated to the outdoor containers at the Senior Progress Center Monday.

Activities: Monday: donate flowers for outside containers. **Tuesday:** 10 a.m. exercise; 10:30 a.m. pinochle. **Wednesday:** 10:30 a.m. cinnamon rolls and coffee. **Thursday:** 10 a.m. exercise; 10:30 a.m. darts. **Friday:** 10 a.m. exercise; 10:30 a.m. Wii.

Menus: Monday: baked fish, macaroni and cheese, spinach, cook's choice fruit. **Tuesday:** taco salad, citrus slices, chips, fruit

cobbler. **Wednesday:** paprika chicken, mashed potatoes, gravy, cucumbers and onions, peaches. **Thursday:** bierock casserole, seasoned carrots, orange pineapple salad, cookie. **Friday:** barbecue pork sandwich, potato rounds, broccoli and cauliflower salad.

The Thomas County Nutrition Center invites anyone 60 and older and guests to lunch Monday through Friday at the senior center.

Make reservations at (784) 460-2901 by noon the day before.



Happy Mother's Day

Prime Rib for two & Dessert

Dance & DJ

9:30 p.m. - 1:30 a.m.



785.460.7888
735 E. College Dr.

Celebrate MOTHERS DAY

Give mom the perfect gift!

50% Off
all Nex-Tech Wireless phones!
50% Off
data for 2 months!*



Motorola Milestone
Now Only
\$34.99*



HTC Desire
Now Only
\$49.99*

Plus, get **\$200*** when you bring us your number!

NEXTECH wireless
 Authorized Agent



www.nex-techwireless.com

S&T Communications LLC
 755 Davis Ave • Colby
 785-460-7300

Beringers
 1923 S. Range • Colby
 785-460-2432

*With qualified rate plan and 2 year service agreement. Certain restrictions apply. Nex-Tech Wireless is eligible to receive support from the Federal Universal Service Fund in designated areas. As a result, Nex-Tech Wireless must meet reasonable requests for service in these areas. Questions or complaints concerning service issues may be directed to the Kansas Corporation Commission Office of Public Affairs and Consumer Protection by calling 1-800-662-0027.

Happy Mother's Day
 All Day - All You Can Eat

China Buffet

Special price for kids

Senior discounts (Over 65); 10% off.
 CCC Students; 5% off w/ ID.

*Hours: Sun.-Thurs.: 11 a.m. to 9:30 p.m.;
 Fri.-Sat.: 11 a.m. to 10:30 p.m.*

1933 S. Range, Suite 2
 462-6368

Please join us for a wonderful **Mother's Day Buffet**

Happy Mother's Day!

Reservations Highly Recommended!

785-462-6565



CITY LIMITS BAR & GRILL
 2227 S. Range • Colby, KS



GIVE MOM A GIFT THAT CARES AS MUCH AS SHE DOES.

the Schirlyn pendant by Sara's Hope Jewelry

Moms give their whole worlds for us, so here's a gift that can help change the world: each purchase helps support women worldwide by funding small-business training and microloans, lifting families out of poverty and giving hope for a brighter future ahead. Beautiful and meaningful, this gift perfectly reflects how much Mom means to you.

HORLACHER JEWELERS 

442 N. Franklin • 785-462-2241

Celebrate Mother's Day with Us!



Enjoy a fine selection of wines and champagne from the

Bottle Gallery

Open 9 a.m - 9 p.m. Monday-Saturday
 Gift Certificates Available
 1920 S. Range • Colby
 460-0235



HANGING BASKETS!

Check out our many gift ideas for this Mother's Day in our Lawn & Garden Department!

Walmart

115 W. Willow
 785-462-8634

Save money. Live better.

Remember mom on **Mother's Day**
Sunday, May 8th

Bring her out to MOONLIGHT GARDENS GREENHOUSE!

Beautiful Hanging Baskets
 Weeks Roses • Planters • Trees & Shrubs
 Grasses • Fruit Trees • Water Plans

GIFT CERTIFICATES AVAILABLE!!

All new greenhouse structure - Come check it out!

MOONLIGHT GARDENS
 Call **785-462-6355**

Located 3 mi. North on Hwy. 25, 1/2 mi. West

OPEN on **Mother's Day!** Open 9:30 - 5:30, Mon.-Sat • 12 (noon) - 4:00, Sunday
 Tuesday & Thursday evenings till 8:00 p.m.

Check out our new website!
www.moonlightgardenscolby.com