

# June brings swims, concerts

We celebrated Tourism Week during May and had the unofficial kickoff of the travel season with the Memorial Day holiday.

"Why Travel Matters" was the theme of tourism week; we would like to share some Kansas tourism facts which prove that point. In 2009, Kansas tourism infused \$7.2 billion into the economy. Tourism is the third largest private sector employer in Kansas, with 125,000 direct full-time equivalent jobs in 2009. Each visitor spent on average \$238. One in every nine Kansas citizens owes his or her job to tourism. In 2010, visitors spent over \$7 million in Colby motels. Yes, travel matters!

Perhaps our experience at the Sampler Festival will substantiate this. During the festival, 7,500 folks passed through the gates to learn about Kansas communities, attractions and festivals they might visit. Many of these want to sample the best in our communities.

The 2010 Leadership Thomas County youth class finished their class project. Brewster has new books for their library, Golden Plains has new paint on their bleachers and Villa High play-



## Leilani Thomas

### • On the Road Again!

ground equipment has been painted with vibrant colors. The Villa High project was overseen by the Kiwanis Club of Thomas County.

Cindy Black and I attended the Kansas Community Leadership Facilitator training in Wichita. We learned, along with leadership program facilitators from 17 communities, about the case history method for teaching leadership skills. This was a very intense workshop. There will be a leadership summit Nov. 13 to 15 in Wichita.

We would like to thank the Colby All Sports Booster Club for honoring the Colby Convention and Visitors Bureau as one of their community supporters. We are pleased to support our young people and thank them for the beautiful clock which will be hung in the Colby Visitor Center.

One exciting event for our com-

munity this summer is the opening of the Colby Aquatic Park. We hope you have had the opportunity to visit it, view the colorful surroundings and soak up this new "oasis." It is a well done project and we congratulate all of those who worked to make the aquatic park happen.

Picnic in the Park is back beginning at noon today in Fike Park. Larry Booth kicks off the season, as he has for the last several years. Next Wednesday will bring us Pieces of Pieces of 8 and Bobbi Barton will be entertaining us on Wednesday, June 15, when High Plains Co-op will be holding their annual hot dog feed to benefit Kiwanis and the Fourth of July fireworks. Rounding out the June schedule will be the Bugbee Sisters on Wednesday, June 22, and Shannon Myers on the 29th.

Picnic in the Park will also be held Wednesdays in July. The Colby Chamber of Commerce and Colby Convention and Visitor Bureau thank the *Colby Free Press* for helping to sponsor this summer event.

There are several special golf tournaments during June. The Chamber/Rotary Golf Tournament will be at Meadow Lake Golf Course on Friday, June 10. Registration will be at noon with

tournament play beginning at 1 p.m.

The Citizens Foundation Golf Tournament will begin about 8 a.m. on Friday, June 17.

Car races will be held at the Thomas County Speedway at 7 p.m. Sunday and Sunday, June 19. Racing will be IMCA (International Motor Contest Association) modifieds, stock cars, Northern Sports Mods, IMCA Hobby stocks and econos.

Other special events include Relay for Life beginning at 7 p.m. Friday, June 17, and running until 7 a.m. on the 18th. This event benefits the American Cancer Society.

Trinity Lutheran Church is presenting the Young Swedish Singers in concert at 7 p.m. Tuesday in the Cultural Arts Center at Colby Community College.

Brewster is holding their city-wide garage sale beginning at 8 a.m. Saturday. The early bird gets the best selection.

Finally Fathers Day is June 19. Pioneer Memorial Library will be closed in honor of Dad.

Enjoy the many summer activities, the aquatic park and Picnic in the Park! Happy summer.

*Leilani Thomas is director of the Colby Convention and Visitors Bureau, a long-time civic volunteer and a passionate observer of the tourism industry.*

## Thomas County Jail

Booked into the Thomas County jail:

- Boone James Huff, 20, Colby, May 24, pedestrian under the influence, minor in possession/consumption, Colby Police Department, released same day on recognizance.
- Melissa Ann Edmondson, 30, Colby, May 24, possession/distribution of certain hallucinogenic drugs, possession of hallucinogenic with intent to distribute within 1,000 feet of school property, using communication facility to arrange sales (two counts), endangering a child (two counts), possession of narcotic with intent to distribute within 1,000 feet of school property, conspiracy to commit felony, aggravated endangering of child (two counts) Thomas County Sheriff's Office, released Friday on \$200,000 appearance bond.
- Jason Randall Davis, 29, Colby, May 24, possession/distribution of certain hallucinogenic drugs, Colby Police, released same day on \$100,000 appearance bond.
- Jeffery Alan Heller, 21, Colby, May 24, possession of certain hallucinogenic drugs, possession of drug paraphernalia, Thomas County Sheriff, released Thursday on probation.
- Evan Drew Mainus, 22, Colby, May 24, possession of a narcotic drug with intent to sell (two counts), endangering a child, conspiracy, using communication facility to arrange sales, Thomas County Sheriff, released last Wednesday on \$100,000 appearance bond.

## On the Beat

### THOMAS COUNTY SHERIFF May 24

10:48 p.m. – Took subject from Logan/Thomas county line to Sherman/Thomas county line.

### Last Wednesday

7:54 a.m. – Provided vehicle identification number inspection for Colby Dodge.

9:34 a.m. – Took inmate to Larned State Hospital.

9:45 a.m. – Daniel Keith Dryden arrested on warrant May 24.

9:45 a.m. – Gary Lynn Fisher arrested on warrant May 24.

9:49 a.m. – Narcotics violation report filed for incident at 12:02 p.m. May 24.

### Thursday

8:37 a.m. – Brought two inmates from Rawlins County Sheriff's Office to Law Enforcement Center.

11:09 a.m. – Paul Martin Richard Tech arrested on warrant.

11:25 a.m. – Damen Justin Siruta arrested on warrant.

11:39 a.m. – Vehicle towed from case May 23.

12:15, 12:32 p.m. – Traveler's aid.

1:07 p.m. – Semi stalled in roadway on westbound I-70 on-ramp and Country Club Drive. Provided assistance.

1:17 p.m. – Child in need of care report filed.

1:39 p.m. – Child in need of care report filed.

1:53 p.m. – Took inmates from Law Enforcement Center to Rawlins County Sheriff's Office.

4:15 p.m. – Caller reported subject appeared to be unloading objects from ditch to vehicle. Spoke with subject, everything OK.

6:48 p.m. – Caller reported criminal threat made by neighbor.

10:29 p.m. – Vehicle Identification Number inspection.

### Friday

2:54 a.m. – Accident with deer on I-70 at mile 70.

12:54 p.m. – Assisted stranded motorist at westbound I-70 mile 62 off-ramp.

3:49 p.m. – Caller reported two young children walking in a field in the area of U.S. 24 mile 60. Unable to locate.

11:47 p.m. – Report of suspicious person walking in ditch at U.S. 24 and County Rd. 16.

### Saturday

1:47 a.m. – Took visitor from Law Enforcement Center to I-70 and K-25.

8:48 a.m. – Caller reported neighbor's dog killed livestock. Report filed.

2:17 p.m. – Welfare check.

8:03 p.m. – Took subject from Colby to Thomas/Sherman County line on Old U.S. 24.

### Sunday

3:04 p.m. – Took transient from Colby to Thomas/Sherman County line on Old U.S. 24.

## Public Notice

IN THE DISTRICT COURT OF THOMAS COUNTY, KANSAS

In the Matter of the Estate of RAYMOND A. WHITTAKER, Deceased. CASE NO. 2011-PR-19

### NOTICE OF HEARING

THE STATE OF KANSAS TO ALL PERSONS CONCERNED:

You are notified that on May 25, 2011, a Petition was filed in this Court by Phyllis Whittaker, an heir, devisee, legatee and named fiduciary in the Last Will and Testament of Raymond A. Whittaker, deceased, dated June 14, 1977, requesting Informal Administration and to Admit the Will to Probate, said Will being previously filed on December 15, 1988 pursuant to K.S.A. 59-618(a).

You are required to file your written defenses to the Petition on or before June 29, 2011, at 10:00 a.m. in this Court, in the City of Colby, in Thomas County, Kansas, at which time and place the cause will be heard. Should you fail to file your written defenses, judgment and decree will be entered in due course upon the Petition.

Phyllis Whittaker, Petitioner

Bruce Flipse #10897  
FLIPSE & FLIPSE  
390 North Franklin Avenue, Suite 300  
P. O. Box 606  
Colby, Kansas 67701  
(785) 460-3365  
Attorney for Petitioner

(Published in the Colby Free Press on Wednesday, June 1, 8, 15, 2011)

## Public Notice

IN THE DISTRICT COURT OF THOMAS COUNTY, KANSAS

In the Matter of the Estate of ERNEST E. SHULL, Deceased. CASE No. 2011-PR-16

### NOTICE TO CREDITORS

THE STATE OF KANSAS TO ALL PERSONS CONCERNED:

You are notified that on May 18, 2011, a Petition for Probate of Will and Issuance of Letters Testamentary and Determination of Valid "Consent of Spouse" was filed in this Court by Judith A. Shull, an heir, devisee and legatee, and executor named in the "Last Will and Testament of Ernest E. Shull," deceased.

All creditors of the decedent are notified to exhibit their demands against the Estate within the latter of four months from the date of first publication of notice under K.S.A. 59-2236 and amendments thereto, or if the identity of the creditor is known or reasonably ascertainable, 30 days after actual notice was given as provided by law, and if their demands are not thus exhibited, they shall be forever barred.

Judith A. Shull, Petitioner

Bruce Flipse #10897  
FLIPSE & FLIPSE  
390 North Franklin Avenue, Suite 300  
P. O. Box 606  
Colby, Kansas 67701  
(785) 460-3365  
Attorney for Petitioner

(Published in the Colby Free Press on Wednesday, May 25, June 1, 8, 2011)

## UNRESERVED LAND AUCTION

820 Acres Irrigated, Dryland & CRP  
Wallace County, Kansas

Wednesday, June 8, 2011

10:00 AM, MST

Elk's Club—Goodland, KS

Land Location: 16.7 Miles South of Kanorado on Road SH3.

This land will be offered in 4 individual tracts & combinations of tracts.

### Legal Descriptions

Tract 1: NW/4 of Sec. 20-11-42

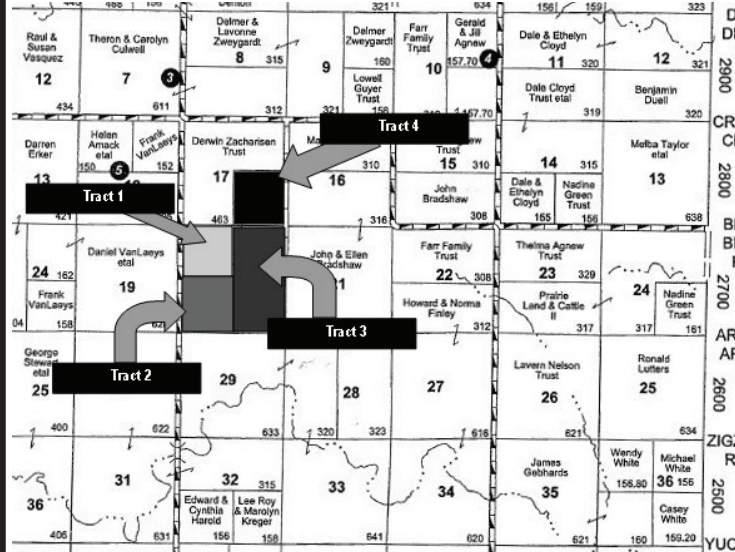
Tract 2: SW/4 of Sec. 20-11-42

Tract 3: E/2 of Sec. 20-11-42

Tract 4: SE/4 of Sec. 17-11-42

### Seller:

Ann Marie Rafacz Trust



Listing Agent & Auctioneer  
Tom Harrison - 785-443-0136

Call For Sale Bill

United Country  
Auction Services

Homeland Realty  
& Auction  
1112 Main  
Goodland, KS 67735  
785-899-3060  
www.HomeLandRE.com  
office@homelandre.com

# BUSINESS DIRECTORY

To have your ad placed in the Business Directory call Andrea or Kathryn today at 462-3963.

## Give it a try!

See what the Business Directory can do for you!

We make insurance simple.

1 premium for simplified bill paying policy for your home, vehicles and other possessions deductible company with a reputation of honesty and fair-dealing agent to handle it all for you

FARM BUREAU FINANCIAL SERVICES  
Insurance • Investments  
www.fbfs.com

Auto | Home | Life | Business | College | Retirement

David Browne III  
550 N. Franklin  
Colby, KS  
(785) 462-3388

Securities & services offered through EquiTrust Marketing Services, LLC, 5400 University Ave., West Des Moines, IA 50266, 877-860-2994. Member SIPC. Farm Bureau Property & Casualty Insurance Company. Western Agricultural Insurance Company. Farm Bureau Life Insurance Company. West Des Moines, IA. Affiliates Company providers of Farm Bureau Financial Services. © 2010 FB, Financial Group, Inc. MO111 (6-10)

NEW SYSTEM  
PROFESSIONAL WINDOW CLEANING

(800) 611-6735

www.MyWindowCleaner.net  
Serving Colby since 1992!

Commercial • Residential • Free Estimates

ROOFMASTERS

Serving Colby for over 30 YEARS!

RESIDENTIAL 425 East Hill, Colby, KS  
Heritage Shingles 785-462-6642  
Wood Shingles Licensed  
IR Shingles Bonded  
Stone Coated Steel Insured  
Metal Panels FREE ESTIMATES

COMMERCIAL  
EPDM Rubber  
White TPO Single Ply  
Modified Systems  
Built up Systems  
Elastomeric Coating

WHO YA GONNA CALL?

Meadow Lake Restaurant & Lounge

Golf season is here. Come join in the fun at our new low season prices!

Meadowlake Golf Course, Restaurant and Lounge are public facilities, not private - everyone welcome.

Restaurant and Lounge are open Monday - Saturday  
Prime Rib, Salad Bar and Desert Special every Saturday night

MEADOW LAKE  
GOLF COURSE & RESTAURANT  
785-460-6443  
1085 E Golf Club Rd. • Colby, KS

THOMAS County INSURANCE AGENCY  
Serving NW Kansas for over 100 years.

Representing many companies to provide all your insurance needs:

- Home, Auto, Boat, Motorcycle, RV
- Farm and Crop Insurance
- Commercial Property, Automobiles
- General Liability, Workers Compensation
- Inland Marine, Builders Risk
- Auto Service Shops
- Body Shop and Collision Repair
- Contractors
- Restaurants
- Salons and Day Spas
- Strip Malls, Condominiums
- Churches, Schools, Day Care Centers

\* For great coverage and customer service contact me!

Dennis R. Tubbs/Agent

P.O. Box 506 • 490 N. Franklin  
Ph: 785-462-3939 • Fax: 785-462-3752  
dtubbs@thomascountyins.com • www.thomascountyins.com

Bankruptcy Questions?  
Call Toll Free (800) 864-4619

GLASSMAN BIRD BRAUN SCHWARTZ

200 W 13th - Hays, KS

We are a debt relief agency. We help people file for bankruptcy relief under the Bankruptcy Code.

NEED EXTRA MONEY?

Be a Newspaper Carrier!

COLBY FREE PRESS  
155 W. 5th Street • 785.462.3963

Call us or stop by!