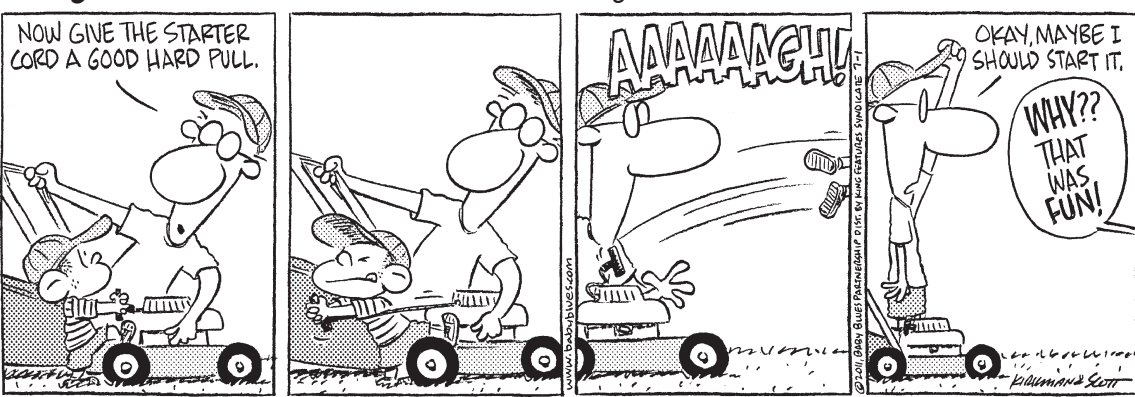
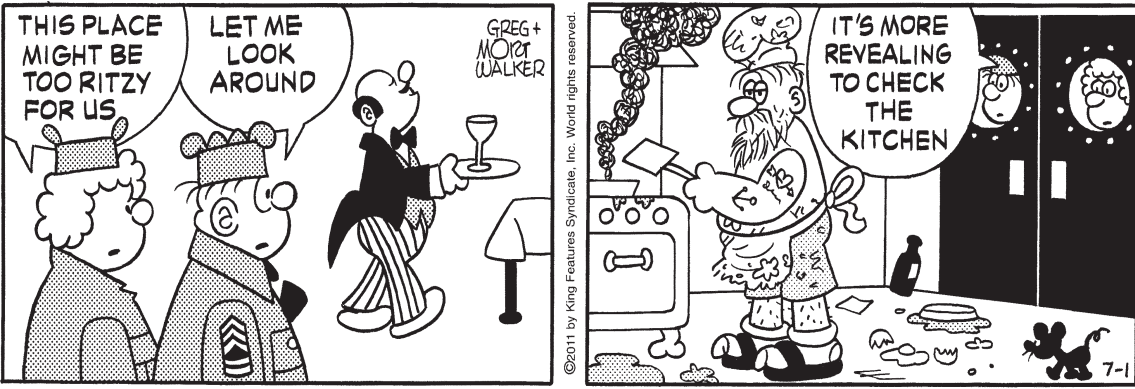


Baby Blues • Rick Kirkman & Jerry Scott



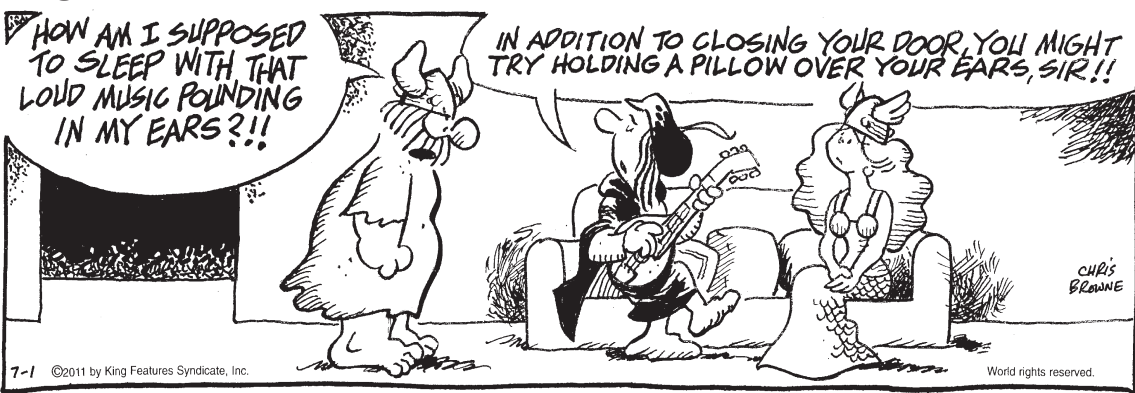
Beetle Bailey • Mort Walker



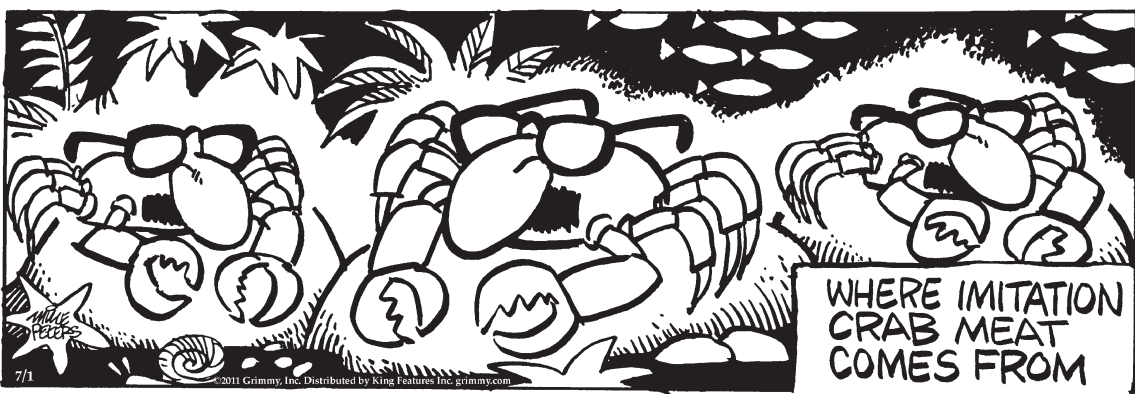
Blondie • Chic Young



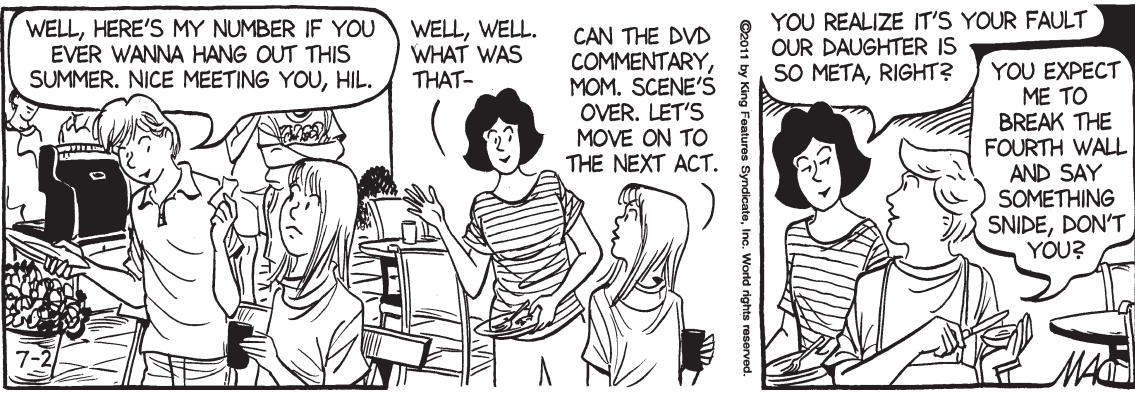
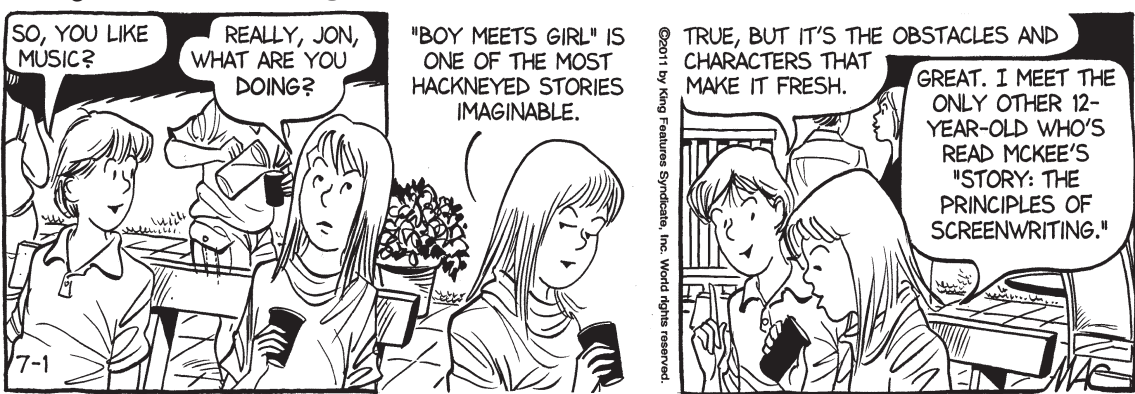
Hagar the Horrible • Chris Browne



Mother Goose and Grimm • Mike Peters



Sally Forth • Greg Howard



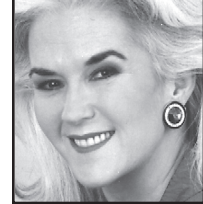
Todd the Dinosaur • Patrick Roberts



Zits • Jim Borgman & Jerry Scott



Heloise



• Hints from Heloise

Clean cover of barbecue grill

Dear Readers: Here are some more "Blast from the Past" hints. Have fun reading them! - Heloise

CLEANING A BARBECUE

Dear Heloise: I have a small charcoal BARBECUE GRILL that has years of grease built up on the inside of the cover. Lately, I have noticed that when I cook, black specks fall on the meat. Is there a method that will clean the built-up grease off the inside of the barbecue grill cover? - James P., via fax

We checked with a major manufacturer of barbecue grills, which told us that those specks are caused by the cooking process. Without cleaning, the flecks will/can fall onto food items.

It's suggested that you clean the interior of the lid by first removing the loose gunk with a crumpled piece of aluminum foil or a grill brush. Next, with the barbecue warm, not hot, wipe the inside of the lid with paper toweling. You also can use a solution of warm water and mild soap to clean the inside cover. Be sure to rinse all soap off.

UPDATE: Many barbecue grills have an enamel finish on the lid, so DO NOT paint or put wax on it. And you should clean off the grate after every use. A barbecue grill brush does this best. - Heloise

SEND A GREAT HINT TO:

Heloise
P.O. Box 795000
San Antonio, TX 78279-5000
Email: Heloise(at)Heloise.com

RECYCLED NOTEPADS

Dear Heloise: Knowing how pleased you are when we get involved with recycling, I thought you'd like to know what we are doing:

We are celebrating the anniversary of our cancer-research organization at a local restaurant. For one of the favors, we have made notepads out of sheets of paper from past functions, which we save for this purpose every year. We tie them with colorful yarn. We use different colors of scraps. - Mildred S., Miami

PICTURE ARRANGEMENT

Dear Heloise: Here is a timesaving hint I found useful: My two large bookcase units had to be moved while the floor was being refinished. I had spent a long time arranging the books and artifacts in a pleasing arrangement on the shelves. All had to be removed because of the weight.

I photographed the contents and was able to easily put all back the way it was after the job was done. - Gail O., Bakersfield, Calif.

NAIL-POLISH MARKER

Dear Heloise: My mother taught me to keep a bottle of bright-red nail polish in the kitchen to mark things that are hard to see. For example, paint red dots at the "off" location on stove knobs and at the correct thermostat setting inside the refrigerator. Any knob that has a black mark can be painted with red nail polish. Makes it easier to see. - Julia D., North Fort Myers, Fla.

MINT HOLDER

Dear Heloise: I bought a lipstick holder to put my candy breath mints in. No more yucky wrappers, and no more digging in the bottom of my purse for them. - Martha H., Warren, Ohio
(c)2011 by King Features Syndicate Inc.

Bridge • Steve Becker

You are South and have the following hand:

♠ K8 ♥ 5 ♦ KQ1074 ♣ AK963

1. You bid One Diamond, and after partner responds One Spade, you bid Two Clubs. Partner bids Two Spades. What would you bid now?

2. You bid One Diamond, and partner responds One Spade. After you bid Two Clubs, partner bids Two Hearts. What would you bid now?

3. You are the dealer, and the bidding goes:

South	West	North	East
1 ♠	Pass	1 ♥	Pass
2 ♣	Pass	3 ♦	Pass
4 ♣	Pass	4 ♠	Pass
?			

Bidding Quiz

1. Three spades. Your hand is by no means a minimum opening bid, so you cannot afford to pass. Nor should you bid three clubs, which might also bring matters to a screeching halt. The fact is that when partner bids spades a second time after you have bid two suits, he is almost certain to have six or more of them. Consequently, your K-8 constitute adequate trump support, and you should show that support -- as well as your extra values -- by raising partner to three. He might well have something like: [S] QJ9762 [H] 83 [D] A5 [C] J84, in which case you'd surely want to be in game.

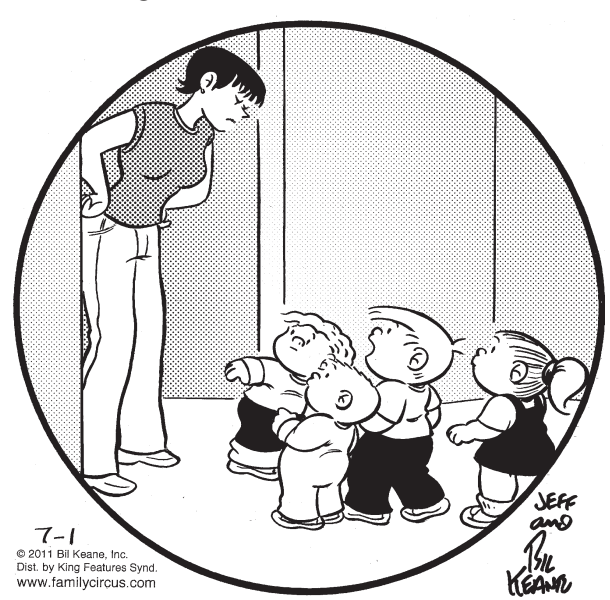
2. Three clubs. It is true that you have extra values not revealed by the three-club bid, but at this juncture it is more important to describe the two-suited nature of your hand. You might well be on the way to a slam, but before you can consider how high to go, you must clarify your distribution.

You need not worry that partner will pass three clubs. Since he has already made two forcing bids, he can't stop bidding now. If he displays interest in one of your suits, or bids spades again, you can then attempt to show your excess values.

3. Four notrump. Four spades is a cuebid announcing first-round control of spades and interest in a slam, and you should be delighted to cooperate with partner by using Blackwood. How far you go will depend primarily on how many aces partner has. In the unlikely event that he responds with five diamonds, indicating only one ace, you will pass; if he bids five hearts (two aces), you will bid six diamonds; and if he bids five spades (three aces), you will bid a grand slam.

(c)2011 King Features Syndicate Inc.

Family Circus • Bil Keane



"Well, when WOULD be a good time for our yelling contest?"

Conceptis Sudoku • Dave Green

8			3					
		9	8					
	1			7	9			
	7		4	2				
4		7		1				8
	6	2				9		
	5	3					6	
				9	4			
			7					5

Difficulty Level ★★★ 7/01

This is a logic-based number placement puzzle.

The goal is to enter a number, 1-9, in each cell in which each row, column and 3x3 region must contain only one instance of each numeral.

The solution to the last Sudoku puzzle is at right.

2	7	8	3	6	4	5	9	1
5	6	1	8	9	7	2	3	4
9	4	3	5	1	2	6	8	7
8	3	5	6	7	9	4	1	2
7	9	4	1	2	5	8	6	3
1	2	6	4	8	3	7	5	9
4	5	9	2	3	6	1	7	8
6	1	7	9	4	8	3	2	5
3	8	2	7	5	1	9	4	6

Difficulty Level ★★★

Cryptoquip

SBZGN O JBML JMAAMN OIBZR

O EOWRTEZG NBK EFBL WRC

GBXWAK BSAMF IM AOLMN

"TWC LOCRMFC XMF CM?"

Yesterday's Cryptoquip: WHEN YOU'RE SCHEDULED TO GO GET YOUR TEETH CLEANED, WOULD YOU CALL THAT A DATE WITH DENTISTRY?

Today's Cryptoquip Clue: I equals B

Crossword • Eugene Sheffer

ACROSS 1 Klutzy sort 4 Sacred bird of Egypt 8 Reach 212, maybe 12 Evergreen type 13 — contendere 14 Radius neighbor 15 Occurrence before the chute opens 17 National park in Utah 18 Screws up 19 Ultraviolet filter 20 Fibula neighbor 22 PJs cover 24 Reed instrument 25 Strong 29 Ultramodernist 30 Browbeat 31 Genetic abbr.

32 High and low points 34 Island neckwear 35 Heidi's peaks 36 Saw things? 37 Act the coquette 40 Encounter 41 Source of wealth 42 Post-infraction attempt 46 First victim 47 Pre-unification capital 48 Miss Piggy's pronoun 49 Bouquet 50 Race place

51 A billion years 51 Strike zone? 16 Canal zone 19 Do as I say 20 Color quality 21 Mountain goat 22 Portrayals 23 Hooters 25 Shoe style 26 Leisure 27 One weather 30 Region member 33 Almost never 34 Onion relative 36 Infinitesimal 37 Envelope part 38 Timber wolf 39 Mid-month date 40 Repair 42 DOJ division 43 Director Howard 44 Dove's call 45 Family

10 Party to **Solution time: 25 mins.**

F	A	T	E	S	E	C	C	H	A	P				
A	S	H	Y	P	R	O	H	A	U	L				
W	E	R	E	L	A	W	J	I	N	K	Y			
N	A	U	S	E	A	B	A	L	D					
				O	N	T	H	E	B	L	I	N	K	
C	H	A	R	D	O	L	E	C	O	N				
L	O	N	E	S	N	L	P	A	V	E				
T	R	A	Z	O	O	P	U	P	A	E				
				O	N	T	H	E	F	R	I	T	Z	
				H	U	N	T	B	A	Z	A	A	R	
				I	D	E	M	E	S	S	L	I	M	E
				C	O	M	P	N	E	E	D	E	N	T
				Y	E	A	S	S	E	N	D	E	N	T

Yesterday's answer 7-1

1	2	3	4	5	6	7	8	9	10	11	
12			13					14			
15		16						17			
		18						19			
20	21					22	23				
24				25					26	27	28
29				30						31	
32			33						34		
			35					36			
37	38	39					40				
41				42	43					44	45
46				47						48	
49				50						51	