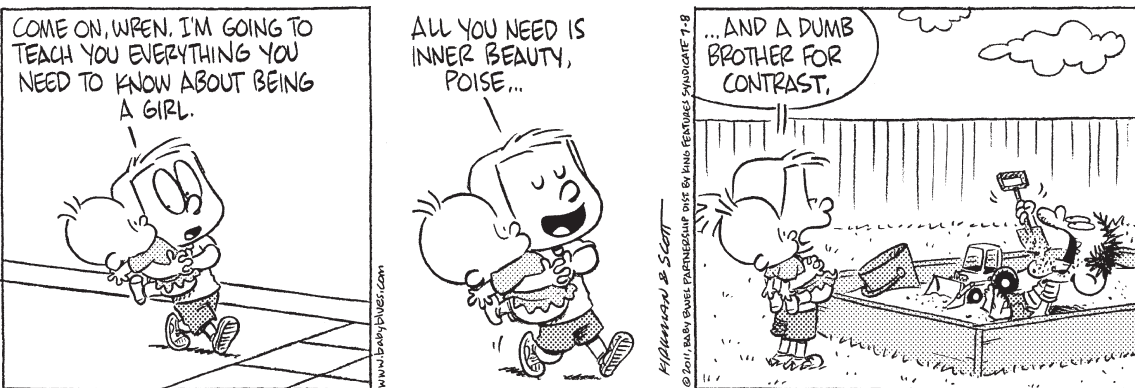
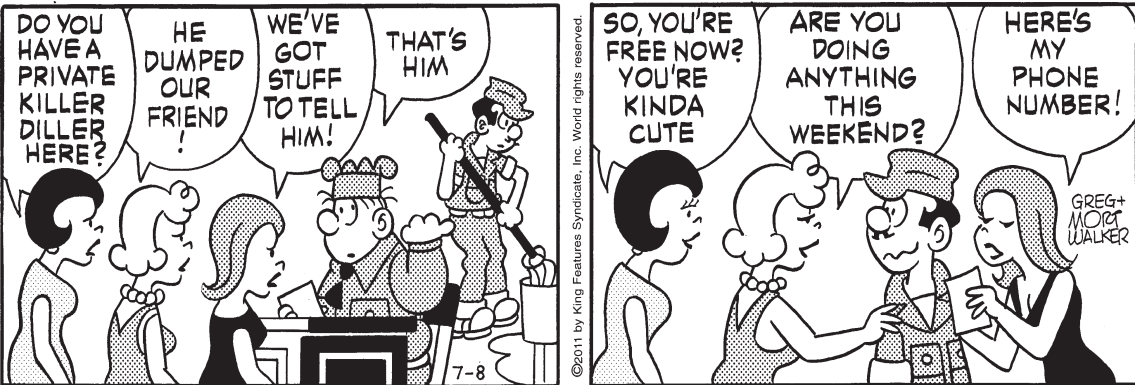


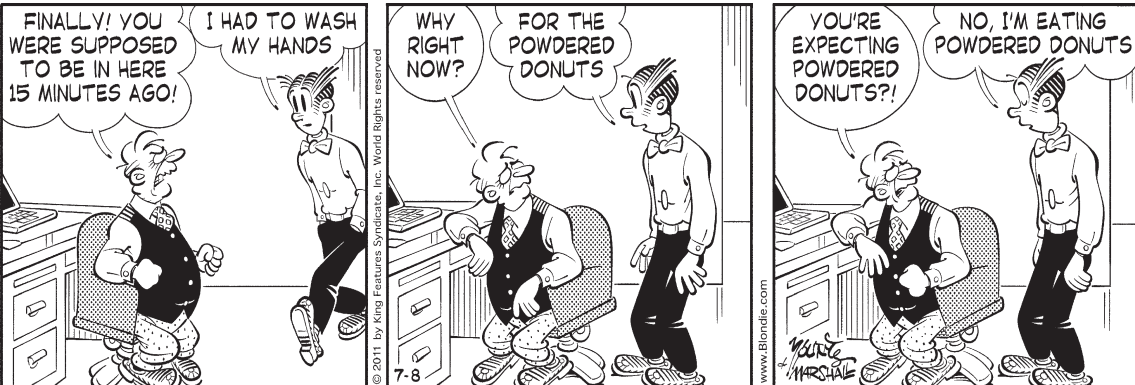
Baby Blues • Rick Kirkman & Jerry Scott



Beetle Bailey • Mort Walker



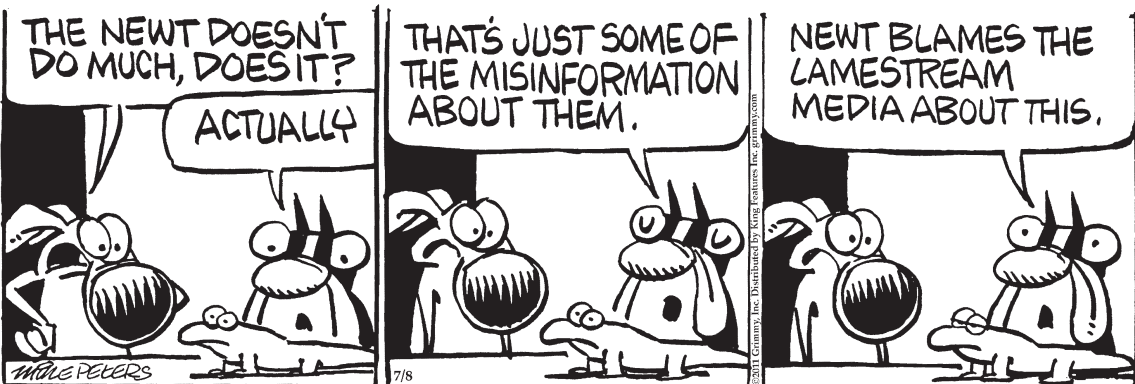
Blondie • Chic Young



Hagar the Horrible • Chris Browne



Mother Goose and Grimm • Mike Peters



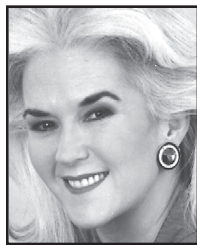
Sally Forth • Greg Howard



Todd the Dinosaur • Patrick Roberts



Zits • Jim Borgman & Jerry Scott



Heloise

- Hints from Heloise

Gray comes off dishes with soda

Dear Heloise: I have a problem that I can't solve. Perhaps you can help. I have NICE DISHES that I use for everyday meals. The silverware leaves gray marks when it strikes the dish, plate or bowl. I have been unable to remove these marks. Can you help? – Faye Wools, Lakeland, Fla.

Sure can! The gray marks left by silverware usually are quite easy to remove. You can use a nonabrasive powder cleanser to get the marks off, or a Heloise Hint: Combine baking soda with water to make a paste, then scrub using a sponge. Baking soda is useful for so many things. To receive my Baking Soda Hints and Recipes pamphlet, crammed with money-saving baking-soda hints, send \$5 with a long, self-addressed, stamped (64 cents) envelope to: Heloise/Baking Soda, P.O. Box 795001, San Antonio, TX 78279-5001. To freshen up a stinky mop, soak it in 4 tablespoons baking soda and 1 quart water for a couple of hours, then rinse well. – Heloise

CLEANING EYEGLASSES

Dear Heloise: I discovered a wonderful tool for cleaning hard-to-access areas on eyeglasses, such as those between the earpiece and the screws for the lenses and around some nosepieces.

Sometimes dirt and grease get caked in there, and rigid items such as toothpicks don't work well. I remembered we had some of those flexible, disposable, between-teeth "brush" cleaners. (They're small, greenish, rubbery "brushes" on tiny plastic handles sold in packs of different sizes.) So I used one of those, and it worked like a charm! – Debbie Miller, Coeur d'Alene, Idaho

PACKAGED GOODIES

Hello, Heloise: When my son was in college, I always sent him packages of goodies. To keep everything from getting damaged, I used packing peanuts around the items.

One day, my son called to tell me he received a wonderful package from his grandmother, full of good things. He especially liked the peanuts Grandma used for packing. He ate them all!

When I told my mother to use peanuts for packing, she literally thought I meant peanuts – she used unsalted peanuts in the shell. What a wonderful idea that turned out to be – extra food for my son to enjoy. – Marge in The Villages, Fla.

Great hint, as long as it is used when mailing items within the United States. I don't think you want a package filled with edible peanuts sitting on a loading dock somewhere! – Heloise

HANDY BRUSHES

Dear Heloise: I read the hint in your column about using a (new) toilet brush to clean the non-removable guard on a garbage disposal. It works like a charm!

I recently tried a bottle brush on the drain in my bathroom sinks. It cleans them slick as a whistle. Thank you so much for making our lives easier. – Judy in Colorado

(c)2011 by King Features Syndicate Inc.

Bridge • Steve Becker

You are South, and the bidding has gone:

East 1 ♠ South Dble West ? North 2 ♥

Pass What would you bid now with each of the following four hands?

1. ♠ J5 ♥ AQJ10 ♦ Q94 ♣ AQ83
2. ♠ AQ6 ♥ 95 ♦ K7 ♣ AKQ874
3. ♠ 10 ♥ KQJ3 ♦ KQJ943 ♣ A5
4. ♠ AQ8 ♥ J94 ♦ AJ6 ♣ AK97

Bidding Quiz

1. Pass. Your double of one spade announced a hand of opening-bid proportions. Partner's non-jump response to the double does not indicate any strength at all and might well be made with a very poor hand.

Once the meaning of the double and the response are understood, the doubler should know what to do next. With a minimum double, he passes a minimum response by partner. With more than a minimum double, he bids again in a manner consistent with whatever extra values he has.

In this case, there is almost no chance for game after partner's minimum response. You have losers galore and can't even be sure that partner will make eight tricks, let alone nine or 10. With a good hand (nine points or more), partner would have bid three hearts rather than two, and because he failed to do so, game should be regarded as extremely unlikely. Change the queen of diamonds to the ace, and you might then risk a three-heart bid.

2. Three notrump. Admittedly, this is risky, since partner might not have a point. But with eight probable tricks, assuming a spade lead, it's not too much to hope that he has the diamond queen or a heart trick. Not every contract is underwritten by Lloyd's; reasonable risks are part of the game.

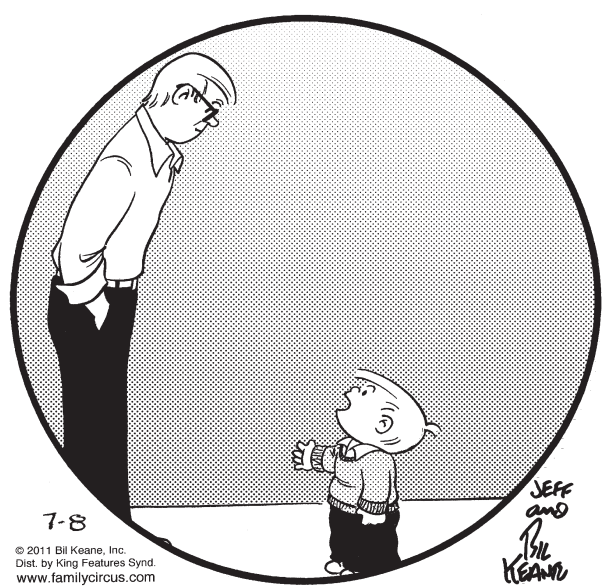
3. Four hearts. It would be cowardly to bid less, even though it might turn out that there are four unavoidable losers. A raise to three hearts would be much too conservative, since partner might pass holding the ace of hearts or king of clubs and nothing else. Either one of these cards would practically assure 10 tricks.

4. Two notrump. This is a very strong bid in the given sequence since you are bidding two notrump single-handedly opposite what might be a worthless hand. Partner should carry on to game with just a smattering of values.

It would be reckless to leap to three notrump at this stage because partner has at least partially covered your weak spot, hearts. You'll need substantially more than just four hearts from him to make nine tricks.

(c)2011 King Features Syndicate Inc.

Family Circus • Bil Keane



Conceptis Sudoku • Dave Green

	1					3		
5		3						
	4		9			1		6
		9		6				
			4		3			
				1		9		
1		7			8		5	
						7		3
		8					9	

Difficulty Level ★★ ★★

This is a logic-based number placement puzzle. The goal is to enter a number, 1-9, in each cell in which each row, column and 3x3 region must contain only one instance of each numeral.

The solution to the last Sudoku puzzle is at right.

3	5	8	1	9	7	6	2	4
6	7	2	4	8	5	3	1	9
4	9	1	2	6	3	7	5	8
9	1	5	3	7	4	2	8	6
2	6	7	9	1	8	4	3	5
8	4	3	5	2	6	1	9	7
7	3	9	8	4	1	5	6	2
1	8	6	7	5	2	9	4	3
5	2	4	6	3	9	8	7	1

Difficulty Level ★★ ★★

Cryptoquip

DMZFLA NORDS RG VTRDT

BMZFYMLA BOMVOA DMMSB

TMQBF QRLFQB' BFWUB RG

NWU: "YQWRBRGK BWLLOFB."

Yesterday's Cryptoquip: PEOPLE ALWAYS TELL ME THAT COUNTRY FOLK FROM WAY OUT IN THE STICKS BAKE THE BEST BUMPKIN PIE.

Today's Cryptoquip Clue: R equals I

Crossword • Eugene Sheffer

- |                               |                               |                             |                                 |
|-------------------------------|-------------------------------|-----------------------------|---------------------------------|
| <b>ACROSS</b>                 | <b>39</b> Wide shoe size      | <b>58</b> —                 | <b>21</b> Japanese assassin     |
| <b>1</b> Energy               | <b>41</b> Eat in style        | <b>DOWN</b>                 | <b>23</b> Receded               |
| <b>4</b> Chances, for short   | <b>45</b> The Jetsons' dog    | <b>1</b> Poison state       | <b>24</b> Expert                |
| <b>7</b> Ball VIP             | <b>47</b> Pick-up-sticks game | <b>2</b> Spud state         | <b>25</b> Perched               |
| <b>12</b> Tokyo's old name    | <b>48</b> Deli purchase       | <b>4</b> — and ahs          | <b>26</b> North Sea feeder      |
| <b>13</b> Scrap               | <b>52</b> Society newbie      | <b>5</b> For now            | <b>28</b> Vast expanse          |
| <b>14</b> Art supporter       | <b>53</b> Wharton or Piaf     | <b>6</b> Tale               | <b>30</b> H-deux-O              |
| <b>15</b> — "King" Cole       | <b>54</b> Over (Pref.)        | <b>7</b> Gridlock sound     | <b>31</b> Cunning               |
| <b>16</b> Lake Mead structure | <b>55</b> Lemieux milieu      | <b>8</b> Listener           | <b>32</b> Bill's partner        |
| <b>18</b> Discoverer's cry    | <b>56</b> High-pitched        | <b>9</b> 1960s hallucinogen | <b>33</b> Mayo ingredient       |
| <b>19</b> Disrobe             | <b>57</b> Give permission     | <b>10</b> Grazing area      | <b>36</b> Interweave            |
| <b>20</b> Early period        |                               | <b>11</b> Shade provider    | <b>37</b> Siesta cover          |
| <b>22</b> Storm center        |                               | <b>17</b> Panorama          | <b>40</b> Lucy's pal            |
| <b>23</b> Relaxation          |                               |                             | <b>42</b> Kind of ink or rubber |
| <b>27</b> Doctrine            |                               |                             | <b>43</b> Dorothy, to Em        |
| <b>29</b> Skype device        |                               |                             | <b>44</b> Fireplace tidbit      |
| <b>31</b> Part of an act      |                               |                             | <b>45</b> Wan                   |
| <b>34</b> Lends a sneaky hand |                               |                             | <b>46</b> Leave out             |
| <b>35</b> Blockage            |                               |                             | <b>48</b> Apiece                |
| <b>37</b> Seek damages        |                               |                             | <b>49</b> Praise in verse       |
| <b>38</b> Meditation method   |                               |                             | <b>50</b> Recline               |
|                               |                               |                             | <b>51</b> "— be a pleasure"     |

Solution time: 25 mins.

FBI	BAIT	ALMA
COS	UNDO	LEAR
COLANDER	LILO	
ACK	ACCUSED	
WINTER	HOD	
END	RUG	GEODE
KED	MOW	SLUG
PYREX	DAD	ETO
SIR	REPAY	S
SPECIES	BUN	
WIDE	SQUANDER	
AKIN	AMPS	EMO
NEED	WINE	RUB

Yesterday's answer 7-8

1	2	3	4	5	6	7	8	9	10	11
12			13				14			
15			16				17			
18			19							
20		21		22				23	24	25
			27	28		29	30			
31	32	33					34			
35				36		37				
38				39	40			41	42	43
								46	47	
48	49	50	51						52	
53					54				55	
56					57				58	