

To place your classified ad, mail (155 W. Fifth), fax (785-462-7749), phone (785-462-3963), or stop by our office at 155 W. Fifth

Real Estate

Real Estate

1977 - 2011
34+
 YEARS OF
 EXPERIENCE
 EXPERTISE
 EXCELLENCE

FARM & RANCH REALTY, INC.
 1420 W. 4TH - P.O. BOX 947
 COLBY, KS 67701
 785-462-3904
DONALD L. HAZLETT, Broker


www.farmandranchrealty.com

Naomi Ward • Steve Hazlett • Ron Evans • Ed Currier • Neal Mann • Mike Bailey • Scotty Legere


AUCTION SCHEDULE

12/13/11 - Wendell Farm Machinery & Equipment Auction at the Farm & Ranch Auction Pavilion 1/2 mi West of Colby on Hwy 24. Complete line of late model farm machinery.
 1/18/12 - 1,120 ac Kiowa County, CO cropland - 3 tracts & combos
 1/19/12 - Farm Machinery Auction, NW of Eads, CO
 1/24/12 - 160 ac Ellis County, KS cropland, SE of Ellis
 3/6/12 - Farm Machinery Auction for Chuck Hawkins at Sheridan Lake, CO - Consignments Welcome- Call Neal Mann!
 3/31/12 - Farm & Ranch Spring Consignment - Call your consignments in early!!


REAL ESTATE FOR SALE



TREGO CO - Hunting season is Here - 160 acres CRP & grass w/ home/cabin, perfect for hunters - abundant wildlife- deer-pheasant-quail-turkey - near Cedar Bluff Reservoir - **PRICE REDUCED!!**



1 Plymouth Drive
 One owner brick ranch on 1 acre lot. 3 BR, 3 bath home, full basement, 2 car attached grg, patio, established trees, & on a quiet street.



345 N. Garfield
 3 Bedroom, 2 bath bungalow, partially finished basement, 1-car grg, and fenced yard w/nice landscaping.
Price: \$91,900

***CHECK OUR WEB SITE FOR ADDITIONAL PRIVATE TREATY LISTINGS!**

"When you list with Farm & Ranch, it's as good as SOLD!"

HIGH PAYING OIL & GAS JOBS

Allied Oil and Gas Services an equal opportunity employer, has immediate openings for FULL-TIME Truck Drivers, Diesel Mechanic & Shop/Bulk plant operator. Excellent Benefit Package includes: 401K, Paid Time Off, Job Bonuses, Employer pays 80% of the Health Insurance for entire family. Life Insurance, Dental Insurance and Vision Insurance available. Drivers require a Class A CDL preferred, pre-employment drug screening, and background check required. Contact Human Resources at 785-672-3471 or email us at shelley.jackson@alliedservices.net

friends don't let friends drive drunk.

U.S. Department of Transportation Ad Council

REDUCED - \$118,000



230 S. Grant
 Brick 4 BR/2.5 Bath
Call Rock today!

HomeLand REALTY AUCTION

(785) 462-8255
www.HomeLandRE.com

An Affiliate of **United Country**

GREAT LOCATION



1125 Wheatridge
 3 BR/3 Bath
Call Marilyn Today!

SEE TO APPRECIATE



905 S. Range
 4 BR/2 Bath
Give Pat a call today!

READY FOR YOU



280 E. 4th
 Big opportunity at small cost
Call our office today!

BEAUTIFUL HOME



210 Iowa, Brewster
 6 BR/3 Bath
Give Toni a call today!

Pioneer II Sub. Lots	\$12,000	940 W. 2nd	\$70,000	460 W. 4th	CONTRACT
El Chaparral Add. Lots	\$18,000	915 Mentlick	SOLD	905 S. Range	\$112,500
411 Illinois, Brewster	CONTRACT	460 Arrowhead	CONTRACT	210 Iowa, Brewster	\$115,000
410 Converse, Oakley	CONTRACT	1111 Flint	\$79,900	265 W. Summit	SOLD
865 S. Garfield	CONTRACT	112 Manchester, Brewster	\$89,900	230 S. Grant	\$118,000
340 W. 8th	\$69,000	565 N. Mission Ridge	\$105,000	1800 Harvey Court	CONTRACT
445 W. 6th	\$69,500	255 N Garfield	CONTRACT	1125 Wheatridge	\$162,500
1135 W. 6th	\$70,000	945 Mentlick	\$109,500	1160 Wheatridge	\$209,500

NATIONAL MARKETING - PROVEN LOCAL EXPERTISE

6403 Old Hwy. 40, Park, KS 41 acres, three bedroom house & several out-buildings. \$149,500 Give Rock a call today!
 2-6 acre lots located along I-70 frontage. Give Marilyn a call today!
 280 E. 4th, Colby, KS Big opportunity at small cost. \$49,500 Call our office today!
 115 N. Kansas, Selden, KS Southwind Steakhouse & Saloon **SOLD!**
 1690 W. 4th, Colby, KS Well maintained dental office with over 2,100 sq. ft. \$160,000 Give Marilyn a call today!
 217 Center, Oakley, KS Our Place-restaurant with all equipment included. \$180,000 Give Jerry a call today!
 1675 W. 4th, Colby, KS Use the warehouse and let the office lease help with payments. \$195,000 Call Pat for details!
 111 W. 3rd, Oakley, KS 10,000+ square foot building with an excellent tenant & great cash flow. \$210,000 Call Rock!
 464 Highway 83, Oakley, KS Colonial Steak House. Excellent opportunity, some owner financing available. \$399,000 Call Tom
 Commercial lot 6.7 acres adjacent to Wal-Mart with I-70 frontage, Colby, KS **PRICE REDUCED!!! \$545,000 Call Tom!**
 Commercial lot 10 acres North of Interstate between Franklin & Country Club Drive East of Bourquins. (Can be split) Call Tom!

WANTED: AG LAND - COMMERCIAL - RESIDENTIAL LISTINGS

Pat Sloan (785) 443-3261	1055 S. Range Colby, KS www.HomeLandRE.com	Rock L. Bedore (785) 443-1653
Marilyn Meyer (785) 462-2703		Tom Harrison (785) 443-0136
Toni Lindberg (785) 443-4032		Jerry Wycoff (785) 672-0429

LAND AUCTION

755 acres in Logan County, KS in 4 tracts.
Auction Date: Dec. 15th, 2011 at 12:04 p.m.
 Sale to be held at the Logan County Courthouse, 720 W. 2nd, Oakley, KS.
 See details at www.Bruauction.com
Wade Brubacher Auctioneer/REALTOR®
 316-283-9183
Prudential Dinning-Beard, REALTORS®
 316-282-2600

Check out your local coverage in Northwest Kansas with Nor'West Newspapers






COLBY FREE PRESS	The Goodland Star-News
THE NORTON TELEGRAM	THE OBERLIN HERALD
Bird City Times	The Saint Francis Herald



Molly J. Oliver
462-5203



Kevin Barnett
443-1722

<p>COUNTRY</p>  <p>NEW Listing Country Home w/acreage 271 Co Rd 11 \$116,900</p>	<p>OAKLEY</p>  <p>Call Kevin Barnett great 5 BR, 2 bath 420 Colby Ave. \$83,000</p>	<p>BREWSTER</p>  <p>Simply "Adorable" 3 BR+ Home 228 Nebraska \$75,500</p>	<p>BREWSTER</p>  <p>Attractive & Affordable Wood burning fire place 309 Rock Island \$42,000</p>
<p>Location, Location fantastic brick home 1010 Maize Call Molly</p>	<p>Very, very large rooms brick 3 BR, 2 bath 550 Grant \$105,500</p>	<p>Just a few miles north 3.5 +/- acreage & home 2510 K-25 \$85,500</p>	<p>A "New" Look 4 BR, 2 bath, bsmt. 580 N. Riddle \$79,900</p>
<p>Charming Cottage 2-3 BR, lots of "New" 615 W. 7th \$52,500</p>	<p>TAKE A LOOK Knotty Pine Charm 440 W. Summit \$78,500</p>	<p>STOP by our office during the Christmas Light Parade this Sunday. Warm up and have hot cider! 'Tis The Season!</p> 	

Stock Realty & Auction Co. 390 N. Franklin Ste. 100 • Colby, KS 67701 • www.stockra.com (785) 460-7653

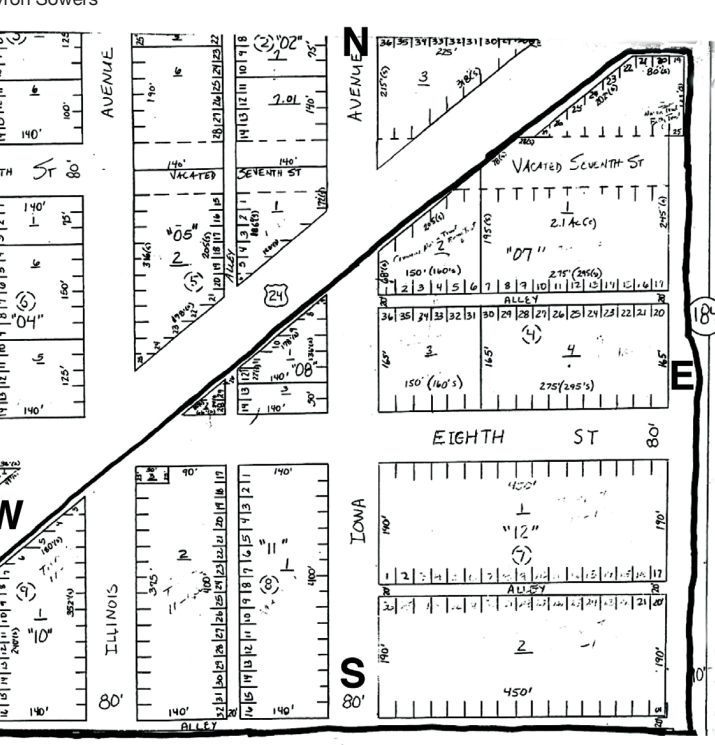
Public Notice

Notice is hereby given that a petition has been filed with the Thomas County Board of Commissioners by Mason Crumrine, praying the of the following Lots, Blocks, Alleys and Avenues **all lying south of Highway 24**: Block 1 Lots 19-27; Block 4 including alley between Lots 1-17 and 20-36 to include Eighth Street and Lots 1-36; Block 5 including alley between Lots 7-14 and 27-28 to include Eighth Street; Block 7 including alley between Lots 1-36; Block 8 including alley between Lots 1-32; Block 9 including alley between Lots 3-16; Illinois and Iowa Avenue in Hans Madsen Addition of Brewster, Kansas.

Notice is hereby given that a public hearing shall be held on the 19th day of December, 2011 at 10:30 a.m. in the County Commissioners Room of the Thomas County Courthouse, at which time the Board of County Commissioners may approve or disapprove the petition for the vacating of all Lots, Blocks, Alleys, and Avenues all of which are lying south of highway 24. Dated this 30th day of November 2011.

Board of County Commissioners
 Ken Christiansen
 Paul M. Steele
 Byron Sowers

/s/ Shelly A. Harms, Thomas County Clerk




Colby Public Schools is accepting applications for the following coaching positions:

- Men's Head Tennis
- Men's Head Golf
- Women's Head Volleyball (2012 - 13 year)
- Head Cross Country (2012 - 13 year)

A classified district application form may be picked up at the administration office, 600 West Third, Colby, KS or downloaded from our website at www.colbyeagles.org. EOE

Fresh-cut Christmas trees available at 600 N. Franklin Colby



Use the Classifieds!

Create lasting memories with personalized holiday gifts.

save 20%*

Expert personalization & fast shipping!

Quick! Order right now and take 20%* off Personal Creations products.

Visit PersonalCreations.com/Adore or call 1.888.696.0558.

*Discount will appear upon checkout and cannot be combined with other offers or discounts, unless specified. Discount does not apply to shipping and handling, personalization fees or taxes. Offer expires December 25, 2011.