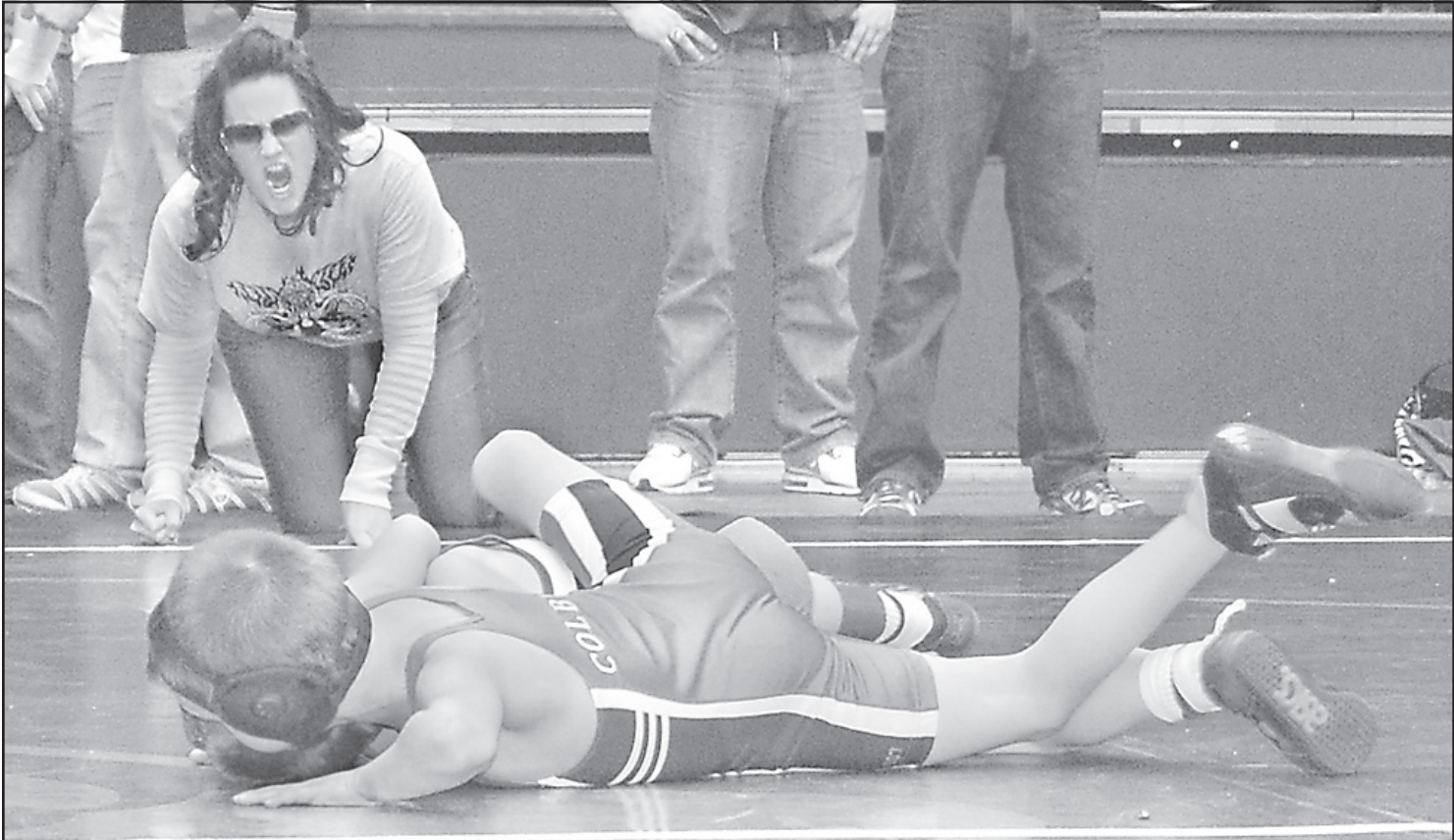


Support from the sidelines



An excited mom yelled matside during her son's wrestling day at the Community Building. match at the Colby Kids Wrestling Club tournament on Satur-

KAYLA CORNETT/Colby Free Press

Property Transfers

Real Estate recorded Dec. 19 to Jan. 9

The following real estate transactions have been reported by the Thomas County register of deeds:

- Dec. 19, Colby Community College to Bainter Construction Co. Inc.; tract of Block 1, Colby Davis Family Legacy Subdivision.
- Dec. 19, Federal National Mortgage Association to Jesse Brottem; Lot 1, Block 3, Colby Indian Hills Addition.
- Dec. 19, Agnes F. Urban to Agnes F. Urban Trust; Lot 10, Block 555, Colby South Park Annex.
- Dec. 20, Chad and Rosemary Briney to Marvin D. Bickner; Lots 8-10, Block 14, Colby Gilmore and Larson Subdivision.
- Dec. 20, Douglas and Beth Christensen Family Trust to City of Colby, Lot 2, Block 4, Colby Sunflower Acres Revised Subdivision.
- Dec. 20, Ronald L. Haremza to Ken Petersen (Life Estate); SW/4

of Sec. 28, T7, R32.

- Dec. 20, Charles F. and Carole M. Murray, Melissa M. and Richard F. Kruse and Peter Holbeny Estate to Brent M. and Sherrie L. Wiedeman; Block 1, Colby Wiedeman Subdivision; Lots 78-82 and 99-106, Colby Murray Subdivision No. 2.
- Dec. 21, Everett O. Curry Trust to Gary L. Curry; NW/4 of Sec. 2, T6, R35; NE/4 of Sec. 2, T6, R35; SE/4 of Sec. 2, T6, R35.
- Dec. 21, Jerra Dee Jacobs, formerly known as Jerra Dee Coon, to William H. Rikoff; Sec. 28, T7, R33.
- Dec. 21, Terry M. Wendell to Mitchell Baalman and Lola Baalman; SW/4 of Sec. 1, T6, R32.
- Dec. 21, Terry M. Wendell to McInay Farms GP; SW/4 of Sec. 25, T6, R34.
- Dec. 21, Terry M. Wendell to Pillango Investments LLC; SW/4 of Sec. 26, T7, R34; SW/4 of Sec. 30, T7, R34; SW/4 of Sec. 13, T6, R34; SE/4 of Sec. 14, T6, R34;

NE/4 of Sec. 15, T6, R31; NW/4 and W/2 of NE/4 of Sec. 10, T6, R31; NW/4 of Sec. 17, T6, R31; Sec. 7, T6, R31.

- Dec. 21, Terry M. Wendell to Tom J. and LaDonna J. Sloan; S/2 of Sec. 6, T6, R31.
- Dec. 21, Terry M. Wendell to Charles M. and Patricia L. Williams, W/2 of Sec. 8, T6, R31.
- Dec. 21, Wendell's Fertilizer Inc. to McInay Farms GP; tract of E/2 of Sec. 25, T6, R34.
- Dec. 21, Wendell's Fertilizer Inc. to Pillango Investments LLC; NE/4 less tract of Sec. 14, T6, R34; NW/4 less tract of Sec. 13, T6, R34; NW/4 of Sec. 34, T6, R34; S/2 of N/2 of Sec. 28, T6, R34; NW/4 of Sec. 21, T6, R34.
- Dec. 21, Wendell's Fertilizer Inc. to Judith A. Shull; SW/4 of Sec. 20, T6, R34.
- Dec. 22, Dale E. and Alana S. Tubbs to Larry A. and Sandy J. McLemore; Lot 23, Block 10, Colby Metzler Subdivision.
- Dec. 22, Wendell's Fertilizer

Inc. to Leitner Farms LLC; NW/4 of Sec. 24, T6, R34; NE/4 of Sec. 18, T6, R34; SW/4 of Sec. 8, T6, R34.

- Dec. 28, City of Colby to Citizens Medical Center Inc.; two tracts of NE/4 of Sec. 7, T8, R33.
- Dec. 28, Joshua D. and Lynn D. Eisenbart to Tylon T. Mengel; east 18' of Lot 16 and Lots 17-18, Block 3, Colby Gilmore and Larson Subdivision.
- Dec. 28, Marvin and Loretta Erwin to Joshua D. and Lynn D. Eisenbart; Lots 2-3 and 6-7, Block 8, Original Colby.
- Dec. 28, Jason Galli to Steve Bugbee; Lots 9-11, Block 19, Ellsworth Gem Subdivision.
- Dec. 28, William Lynn and Tammy Lea Higerd to Tammy Lea Higerd Trust; north 50' of E/2 less east 50' of Block 118, Colby North Addition.

Stay alert to help locate missing kids

For National Amber Alert Awareness Day today, Kansas Attorney General Derek Schmidt reminded Kansans to stay alert when the public's assistance is needed to locate a missing child.

"Kansas was fortunate in 2011 that no Amber Alerts were issued," Schmidt said. "But we should all remember to pay attention when we hear or see an Amber Alert online, on a highway sign, or in a television or radio announcement. When a child is missing, citizens become the eyes and ears of local law enforcement. It could be a tip from you that saves a child's life."

When an Amber Alert is issued, it is broadcast to the public by media organizations. Kansans also are encouraged to sign up to receive Amber Alerts directly to their mobile phones or Facebook accounts. Information about signing up to receive Amber Alerts directly is available on the attorney general's website at www.ksag.org.

"The Kansas Amber Alert program is a powerful tool for law enforcement to use when a child has been abducted," Schmidt said.

The Amber Alert program, named for 9-year-old Amber Hagerman, is a voluntary partnership between law enforcement agencies, broadcasters, and transportation agencies to activate an urgent bulletin in the most serious child-abduction cases. Broadcasters use the Emergency Alert System to air a description of the abducted child and suspected abductor. The goal of an Amber Alert is to instantly galvanize the entire community to assist in the search for and safe recovery of the child.

Since its inception in 1996, this program has successfully brought 540 children home safely. In Kansas, 21 children have been safely returned since 2002. The Kansas Amber Alert program is coordinated through the attorney general's office.

vision.

- Jan. 4, Robert L. Jr. and Glenda G. Harper to Harvey D. and Shane R. Benham; west 8' of Lot 1, Block 25, Original Brewster; tract of NE/4 of Sec. 18, T8, R36.
- Jan. 4, Joann Koerner Trust to Uptown Management Company LLC; tract (Pizza Hut) of SE/4 of Sec. 1, T8, R34.
- Jan. 4, Brian and Rhonda R. Laufer to Rhonda R. Laufer Trust; tract of NW/4 of Sec. 26, T6, R34.
- Jan. 4, Brian and Rhonda R. Laufer to Brian P. Laufer Trust; NW/4 of Sec. 26, T6, R34.
- Jan. 6, Eileen P. Wahl to Nathaniel D. and Crystal R. Peter; Lot 3 and north 62' of Lot 4, block 1, Lehman Brewster Subdivision.



Please Recycle

★ UNITED STATES AIR FORCE ★

HEARTLAND of AMERICA BAND

Presents

Brass IN BLUE

FREE CONCERT!

The United States Air Force Heartland of America Band's **BRASS IN BLUE** is a dynamic 13-member brass ensemble! Composed of ten brass players, two percussionists and one vocalist, the innovative BRASS IN BLUE presents exciting, uplifting music including marches, classical transcriptions and jazz standards.

Thursday, January 26th
7:30 - Doors open at 6:30 p.m.
Colby High School Auditorium

Order your FREE TICKETS today!
 Limit 4 tickets per request while they last!

For more information, visit us at www.HeartlandofAmericaBand.af.mil

GET YOUR TICKETS TODAY!
 Admission is free with complimentary ticket
Presented as a public service by

Western Plains Arts Association & Colby Free Press

ADMISSION IS FREE WITH TICKET

Admission to the concert is FREE but you must have a ticket, available only with this coupon. To obtain your tickets (limit 4), or mail in this form to:

Pat Ziegelmeier
Colby Community College
1255 S. Range, Colby 67701
Mail orders please send self-addressed stamped envelope.

Please send me _____ tickets (limit 4) to see the USAF Brass in Blue Concert

Name _____

Address _____

City _____

State _____ Zip _____

General Admission • No Reserved Seating

Conservation Corner

Thomas County Conservation District

The complete newsletter is available at <http://www.thcoconservation.com/>.

The 68th Annual meeting and Awards Banquet will be held January 23, 2012 at the United Methodist Church in Colby at 6:30 pm. The meal will be served by the Colby High School Band Department. Area students will be recognized for their conservation posters and two producers will receive Kansas Bankers Association Awards for an outstanding windbreak and soil conservation. Make plans to come enjoy the evening with us. Please RSVP by January 17th to Debbie @ 462-7482 ext 1303.

It is time to start thinking about spring tree planting. If you are planning to plant trees, now is a great time to start preparing your project. The district sells a variety of trees including larger nursery grown trees from Colorado. Tree day is scheduled for March 31st, from 8:00 to 12:00 at the district office located at 915 E. Walnut. If you would like to place an order the forms are available at the office and online at <http://www.thcoconservation.com/> on page 3 & 4 of our newsletter.

JANUARY STUDENT OF THE MONTH

LACY O'NEAL

Parents:
LJ & Karen O'Neal

Sponsored by:
Colby Rotary

Lacy, a senior at Colby High School, is Colby Rotary Club's Student of the Month for January 2012.

Lacy's school and community activities include Cheerleading, Dance, Band, Choir, C-Club, Prom Committee, Softball, Sweet Thunder Softball, Cosmic Crayon, Forensics, Young Humanitarians, All School Play, CHS Ambassador, American Red Cross Blood Drive, Colby Community Ambassador, Drive One 4UR School, and Thomas County Fair Volunteer.

Lacy's special honor include Dance-Letter/Energizer Bunny/Team Vote/Most Dedicated; Softball-Letter/JV Will to Win/State Qualifier/Rookie of the Year; Cheer-Letter/All American/Captain; Band-Letter; Orange & Black Classic logo design; Kansas Ambassador of Music; People to People Ambassador; Sunflower Bank Ambassador; Honor Roll; Fifteen Year Dance Award.

Lacy's academic emphasis has been the State Scholars Curriculum. She plans to attend Fort Hays State University and major in Education and Criminal Justice.

We make **HOME LOANS** *Easy & Convenient*

Conventional Loan Interest Rates

	Rate	APR
*15 Year Fixed:	3.000%	3.073%
*20 Year Fixed:	3.750%	3.808%
*30 Year Fixed:	4.000%	4.042%

* Annual Percentage Rates listed above are based on a \$100,000.00 loan with an 80% loan to value and a 30 day rate lock. Rates may change without notice subject to market conditions.

We are your Lender & Servicer

- Competitive Rates
- Personal Service with Someone You Know & Trust
- Borrow here, Pay here

Apply **ONLINE** from the convenience of your home at www.wsbs.com or stop by our office at:

2080 S. Franklin, Suite 4, Colby, KS
785-462-2151

WESTERN STATE BANK

"Quality Tradition You Can Trust"