

# Classifieds

## Services

**Do your feet hurt?** We can help with I-Step Technology. We also provide medicare approved diabetic shoes up to size 15 with doctors prescription by appointment only. Currier Drug, Inc., Atwood. 1-800-696-3214.

---2/15---2/20---

## Pets/Supplies

**Wire haired Pointing Griffons**, several pups available. Excellent hunters and companions. Make great house dogs, good with kids 785-475-3704.

---2/9---3/7---

## Garage Sales

**Indoor garage/moving tag sale.** 419 Smith Drive, Colby. Saturday, Feb. 18, from 8 a.m. - 3 p.m.

---2/16---2/17---



## Garage Sales

**Max George Estate Sale**, 710 S. Grant, Friday, Feb. 17, from 1 - 5 p.m. & Saturday, Feb. 18, from 9 a.m. - 12 noon. Miscellaneous household and shop tools, everything goes!

---2/15---2/17---

## Kansas Classified Network

**Career Opportunity**  
ATTEND COLLEGE ONLINE from Home. \*Medical, \*Business, \*Criminal Justice, \*Hospitality. Job placement assistance. Computer available. Financial Aid if qualified. SCHEV certified. Call 888-220-3977 www.CenturaOnline.com

**Career Training**  
AIRLINES ARE HIRING - Train for hands on Aviation Maintenance Career. FAA approved program. Financial aid if qualified - Housing available CALL Aviation Institute of Maintenance 888-248-7449.

## Kansas Classified Network

**Educational**  
ALLIED HEALTH career training - Attend college 100% online. Job placement assistance. Computer available. Financial Aid if qualified. SCHEV certified. Call 800-481-9409 www.CenturaOnline.com

**Help Wanted**  
Exp. Flatbed Drivers: Regional opportunities now open with plenty of freight & great pay! 800-277-0212 or primeinc.com

## NOTICE TO THOMAS COUNTY TAXPAYERS

It is your responsibility to file your Personal Property Assessment with the County Appraiser's Office each year. Reportable items include: Farm Trucks, Trailers, Mopeds, Dirt Bikes, ATV's, Camping Trailers, Boats, Airplanes, Mobile Homes, Golf Carts, Jet Skis, Snowmobiles, and Business Equipment & Fixtures. Real Estate improvements or structural changes to buildings must also be reported. The filing deadline is the same for Individuals, Businesses, and Corporations. Due date is on or before March 15, 2012. The deadline will be observed and penalties imposed as directed by law. We don't like imposing penalties any more than you like paying them. PLEASE FILE EARLY. If you previously had property to declare, the forms were mailed in January. Otherwise, assistance will be provided at the Appraiser's Office in the basement of the Courthouse in Colby from 8 a.m. to 5 p.m. Monday through Friday.

Use the *Classifieds!*

## Help Wanted



Colby Community College is accepting applications for a part-time **part-time BUS DRIVER** Must have CDL. To apply, contact Kathy Britton at 460-5550. Interviews will begin immediately. Position to remain open until filled.

*Equal Opportunity Employer*

## Help Wanted

Crushing and Screening personnel needed for Recycling operation in Western Kansas

Skilled in one or more of the following is helpful: Operating Loader, Excavator, Dozer Laborer. Well established company looking for people to grow with. Generous benefit package including health and life insurance, outstanding 401k retirement plan, paid vacation and holidays. We are an Equal Opportunity Employer.

Sporer Land Development, Inc.  
PO Box 246 Oakley, KS 67748  
Phone: 785-672-4319 Fax: 785-672-3409

## Help Wanted

### Milk Processing Technician (6)

McCarty Family Farms, LLC is currently seeking several processing technicians for their new milk processing facility. This will be a great opportunity to join a fourth generation dairy farm that is expanding into milk processing. We are currently looking for a team oriented and motivated individual to join our family operation. Responsibilities will include production floor monitoring, milk receiving, milk handling and laboratory testing. Experience working in fluid processing (especially milk) and food safety would be beneficial. This will be shift work and will require weekend work (every other weekend). We are operating 24 hours a day and will require employees on one of two 12 hour shifts. Salary starting at \$15 per hour and is based on experience. We will provide benefits (Insurance package and 401K plan), paid holidays and vacation. If interested please send resume and 3 references to:

Human Resources Department,  
McCarty Family Farms, LLC,  
2231 County Road 31, Rexford, KS 67753  
jcgdvm@mccartyfamilyfarms.com



## Real Estate



(785) 462-8255  
www.HomeLandRE.com



Pat Sloan (785) 443-3261  
Marilyn Meyer (785) 462-2703  
Toni Lindberg (785) 443-4032  
Rock L. Bedore (785) 443-1653  
Tom Harrison (785) 443-0136  
Jerry Wycoff (785) 672-0429

1055 S. Range Colby, KS  
www.HomeLandRE.com

### START HERE



445 W. 6th  
4 BR/2 Bath  
Give Pat a call today!

### GREAT LOCATION



1125 Wheatridge  
3 BR/3 Bath  
Call Marilyn today!

Pioneer II Sub. Lots	\$12,000
El Chaparral Add. Lots	CONTRACT
411 Illinois, Brewster	CONTRACT
227 Smokeyhill, Oakley	CONTRACT
326 Longview, Oakley	CONTRACT
445 W. 6th	\$65,000
940 W. 2nd	CONTRACT
340 W. 8th	\$69,000
1111 Flint	CONTRACT
340 S. School	\$88,000
112 Manchester, Brewster	\$89,900
125 E. Walnut	\$98,500
945 Mentlick	CONTRACT
460 W. 4th	CONTRACT
905 S. Range	CONTRACT
210 Iowa, Brewster	CONTRACT
230 S. Grant	<b>SOLD</b>
5 Austin Court	\$134,900
310 S. Garfield	\$135,000
370 S. Garfield	CONTRACT
122 W. Park, Bird City	\$149,500
1125 Wheatridge	\$162,500

**NATIONAL MARKETING -  
PROVEN LOCAL  
EXPERTISE**

## Real Estate

### Maintenance Technician (2)

McCarty Family Farms, LLC is currently seeking a Maintenance Technician for their new milk processing facility. This will be a great opportunity to join a fourth generation dairy farm that is expanding into milk processing. We are currently looking for a team oriented and motivated individual to join our family operation. Responsibilities will include operations maintenance. Experience in these areas would be beneficial: PLC technologies, refrigeration, glycol chillers, boilers, and milk processing equipment. Salary will be based on experience. We will provide benefits, paid holidays and vacation. If interested please send resume and 3 references to:

Human Resources Department,  
McCarty Family Farms, LLC,  
2231 County Road 31, Rexford, KS 67753  
jcgdvm@mccartyfamilyfarms.com

### Quality Lab Technician (2)

McCarty Family Farms, LLC is currently seeking a Quality Laboratory Technician for their new milk processing facility. This will be a great opportunity to join a fourth generation dairy farm that is expanding into milk processing. We are currently looking for a team oriented and motivated individual to join our family operation. Responsibilities will include development of the milk quality program, laboratory testing and protocols for receiving raw and handling processed milk. Experience in quality assurance programs is a must and some experience in fluid milk processing would be beneficial. Salary will be based on experience. We will provide benefits, paid holidays and vacation. If interested please send resume and 3 references to:

Human Resources Department,  
McCarty Family Farms, LLC,  
2231 County Road 31, Rexford, KS 67753  
jcgdvm@mccartyfamilyfarms.com

## FARM & RANCH REALTY, INC.



1977 - 2012  
**34+**  
YEARS OF  
EXPERIENCE  
EXPERTISE  
EXCELLENCE

1420 W. 4<sup>TH</sup>. - P.O. BO 947  
COLBY, KS 67701  
785-462-3904

**DONALD L. HAZLETT, Broker**  
www.farmandranchrealty.com



We invite you to talk to one of our Real Estate professionals:

• Don Hazlett, Broker • Cindy Hake, Office Manager • Naomi Ward • Melanie Voss • Steve Hazlett • Ron Evans • Ed Currier • Neal Mann • Mike Bailey • Scotty Legere • James Hazlett • J.D. Hininger

### AUCTION SCHEDULE

2/23/12 - 1,000± acres Hamilton County, KS cropland, grass, PLUS 1,000± acres producing minerals selling in 3 tracts & combos  
3/6/12 - Farm Machinery Auction for Chuck Hawkins, et al. at Sheridan Lake  
3/9/12 - 640 acres Lane County, KS cropland & grass, ½ E of Dighton on Hwy 96, selling in 2 tracts and combo, N/2 of 20-18-28 & S/2 of 20-18-28 for Beesley Family  
3/14/12 - 19,000± ACRES EXCELLENT DRYLAND & IRRIGATED CROPLAND, Hudye Farms  
3/31/12 - Annual Spring Consignment Auction

## 19,000+/- ACRES KANSAS & COLORADO LAND AUCTION

SHERMAN, LOGAN & WALLACE COUNTIES, KANSAS & KIT CARSON & CHEYENNE COUNTIES, COLORADO

SELLER: HUDYE FARMS, U.S., INC.

**Wed., Mar. 14, 2012 @9:30 AM, MDT**  
Burlington Community Center, Burlington, CO  
PRODUCTIVE DRYLAND & IRRIGATED CROPLAND - EXCELLENT FOR WHEAT, CORN & SUNFLOWERS!



**INFORMATIONAL MEETING**  
Friday, March. 2, 2012  
10:00 AM - Noon  
Burlington Comm. Center,  
Burlington, Colorado

**Selling in 42 Individual Tracts**

LOCATED FROM WINONA, KS TO STRATTON, CO - Selling in Tracts ranging in size from 80 to 1,600 acres - BUY 1 TRACT OR BUY THEM ALL!

PRE-REGISTRATION AVAILABLE -- INTERNET BIDDING STARTS MARCH 1, 2012

### REAL ESTATE FOR SALE

#### 6 NEW LISTINGS:

**NORTON** -160 acres irrigated cropland w/center pivot & 2 wells, immediate possession, N of Reager -NE/4 of 13-2-25  
**NORTON** -160 acres dryland cropland, excellent producing quarter - 99bu corn APH yld in 2011, immediate possession, N of Reager - NE/4 of 3-2-25  
**HAMILTON** - 160 acres CRP, 8 miles North of Coolidge - NW/4 of 2-22-43  
**PAWNEE** -960 acres excellent cropland, Northwest of Larned, offered in 6 tracts  
**GRAHAM** - 200 acres mostly cropland w/springfed waterway, North of Bogue - NW/4 & SW/4NE/4 of 29-7-21  
**GRAHAM** - 160 acres West of Morland on River Road, 66 acres cropland & 92 acres grass - W/2W/2 of 20-8-25  
**BACA, COLORADO** - 3,500 ac irr farm 8 mi W of Elkart, KS w/2,532 ac under center pivots; 3 homes; 100'x200' shop; 1,000 head backgrounding lot; 140,000bu grain storage; 7.5% Seller leaseback available for 2 yrs

## 1,000+/- AC HAMILTON CO, KS CROPLAND & GRASS PLUS 1,000+/- AC PRODUCING MINERALS

## LAND AUCTION

Thur, Feb. 23, 2012 @ 10:30 A.M., MST

**AUCTION LOCATION:**  
Hamilton Co Fairgrounds,  
Syracuse, Kansas

Property will be offered in 3 individual tracts and combinations.

#### LEGAL DESCRIPTIONS:

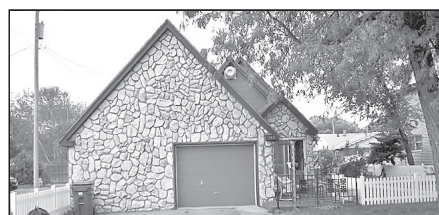
**TRACT 1:** Section 17-23-40, (surface only)  
**TRACT 2:** E/2 of 18-23-40 and SE/4SE/4 of 7-23-40, (surface only)  
**TRACT 3:** 100% of mineral rights and royalty income in & under Tracts 1 & 2  
Tract 1 is all cropland, Tract 2 is all grassland, and Tract 3 is the producing minerals with royalty income. Buy 1, 2 or all 3 tracts - Buyer's choice!

INTERNET BIDDING AVAILABLE

SELLER: Patsy Wolf



**\*\*CHECK OUR WEBSITE FOR ADDITIONAL LISTINGS & VIRTUAL TOURS!\*\***



### PRICE REDUCED!

**345 N. Garfield**  
3 Bedroom, 2 bath  
Price: \$84,950



### INTRODUCING - Melanie Voss

Farm & Ranch Realty is excited to welcome **Melanie Voss** to the team as our new **Residential Real Estate Agent**.

Melanie comes to us with over 15 years banking experience as a loan officer, with extensive experience in real estate transactions.

Whether it be selling your house or buying that perfect home, Melanie is excited to help you with your residential housing needs.

Call Melanie today at 785-443-0611 and let her go to work for you!

**"When you list with Farm & Ranch, it's as good as SOLD!"**

The to-do list in Beth Hoyme's purse will never get done because a drunk driver convinced his friends he'd be fine.

**Friends Don't Let Friends Drive Drunk.**

