

19,000+/- ACRES DRYLAND & IRRIGATED CROPLAND

Eastern Colo & Western KS

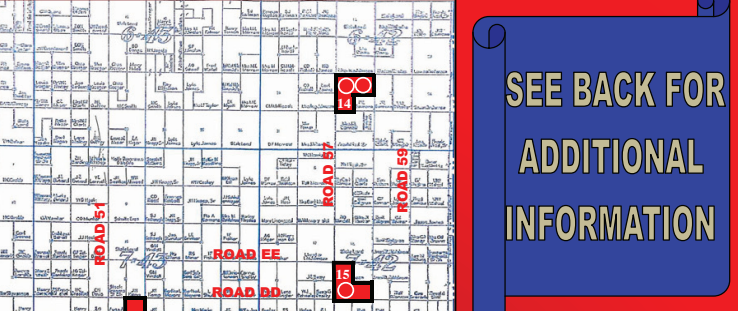
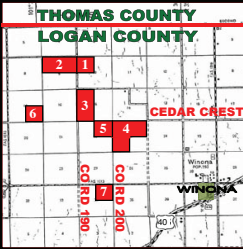
LAND AUCTION

WEDNESDAY, MARCH 14, 2012 @ 9:30 AM, MDT

FARM & RANCH REALTY, INC.
 1420 W. 4TH. - P.O. BOX 947
 COLBY, KS 67701
 785-462-3904
 DONALD L. HAZLETT, Broker
 www.farmandranchrealty.com

AUCTION LOCATION: BURLINGTON COMMUNITY CENTER, BURLINGTON, CO

SELLER: HUDYE FARMS U.S., INC.

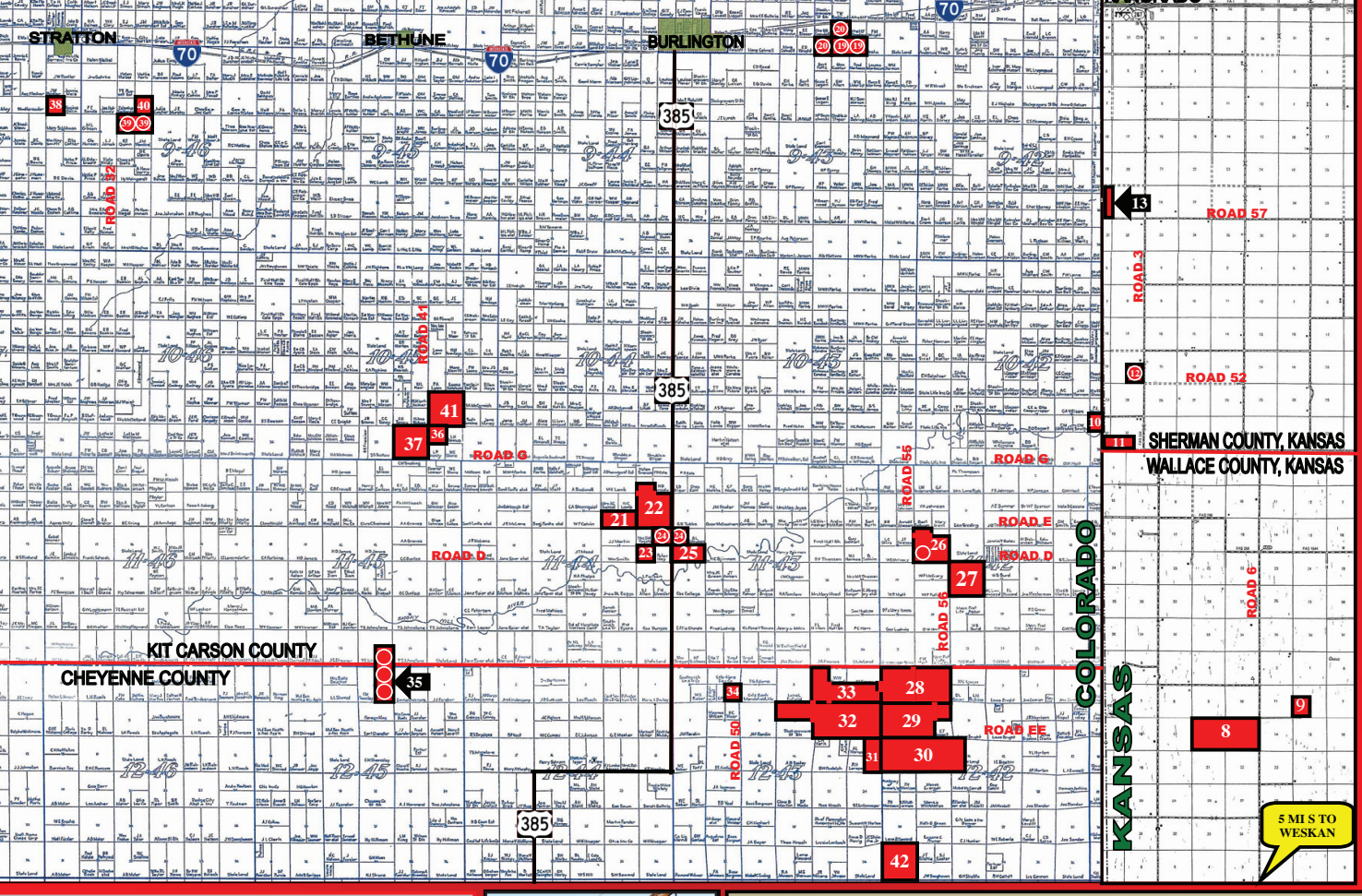


SEE BACK FOR ADDITIONAL INFORMATION

INTERNET BIDDING AVAILABLE
BIDDING OPENS MARCH 1, 2012
 Call Farm & Ranch for details and to place your bids!



FOR A VIRTUAL TOUR visit www.farmandranchrealty.com



FARM & RANCH REALTY, INC.
 NEAL MANN, Listing Agent
 1420 W. 4th • Colby, KS 67701
 TOLL FREE 1-800-247-7863
 DONALD L. HAZLETT
 BROKER/AUCTIONEER
 "When you list with Farm & Ranch, it's as good as SOLD!"



AUCTIONEER'S NOTE: Hudye Farms U.S., Inc. is pursuing other opportunities in business, therefore they are offering these select farms at public auction. These are premier dryland and irrigated farms being offered in 42 separate tracts. The buyers may purchase as many parcels as desired at the auction - from 1 to all 42 tracts! The sale is subject to prior sale in its entirety and the auction is being conducted subject to seller's approval on the day of the sale. The farms have tract signs for your convenience. Buyers will receive the landlord's share of the 2012 wheat crop at no expense for cropping. Buyers can reimburse tenants for any work done or fertilizer applied to the open acres and receive possession at closing. The tenants were hand-picked by Ben Hudye and are some of the best operators in the area.
 Be sure to attend the information meeting scheduled for March 2nd at the Burlington Community Center in Burlington, Colorado. Don't miss this once-in-a-lifetime opportunity to purchase a farm of this magnitude!

1977 - 2012
35
 YEARS OF
 EXPERIENCE
 EXPERTISE
 EXCELLENCE

• Realtors • Auctioneers
 • Appraisers

CELEBRATING 35 YEARS OF EXPERIENCE & EXPERTISE



Front row - Cindy Hake, Neal Mann, Don Hazlett, Broker
 Back row - Scotty Legere, Ed Currier, Steve Hazlett, Mike Bailey and Ron Evans,
 Not Pictured - Naomi Ward, Melanie Voss, and J.D. Hinerger

LOOKING FOR LAND?

KANSAS:
NORTON - 160 acres irrigated cropland w/center pivot & 2 wells, imm poss, N of Reager - **JUST LISTED!**
NORTON - 160 acres dryland cropland, excellent producing qtr - 99bu corn APH yld in 2011, imm poss, N of Reager - **JUST LISTED!**
HAMILTON - 160 acres CRP, 8 mi N of Coolidge - **JUST LISTED!**
PAWNEE - 960 acres excellent cropland, NW of Larned, offered in 6 tracts - **JUST LISTED!**
GRAHAM - 200 acres mostly cropland w/springfed waterway, N of Bogue - **JUST LISTED!**
GRAHAM - 160 acres W of Morland on River Road, 66 acres cropland & 92 acres grass - **JUST LISTED!**
GRAHAM - 160 acres cropland, CRP & grass, SE of Hill City - SE/4 of 28-8-22
NESS - 935 acres CRP & grassland, 9 mi W of Ness City on Hwy 96, subject to Seller leaseback
LANE - 640 acres CRP, expired CRP & grass, SE of Alamota
GREELEY - 160 acres cropland, SW of Tribune - NW/4 of 27-19-4
KEARNY - 320 acres CRP, NW of Lakin - S/2 of 32-23-38

COLORADO:
BACA - 3,500 acres irrigated farm 8 mi W of Elkart, KS w/2,532 ac under center pivots; 3 homes; 100'x200' shop; 1,000 head backgrounding lot; 140,000bu grain storage; 7.5% Seller leaseback available for 2 yrs.
PROWERS - 640 acres irrigated cropland, SE of Towner, CO, 4 irrigated circles w/excellent equip, E/2 of 6-21-41 & E/2 of 7-21-41

FARM MACHINERY & EQUIPMENT AUCTION

TUESDAY MARCH 6, 2012 @ 10:30 AM, MST

SELLERS: Chuck & Brenda Hawkins, et al.

AUCTION LOCATION: AT THE FARMSITE - 1 MILE EAST OF PLAINVIEW SCHOOL ON HWY 96; OR 6 MILES WEST OF TOWNER; OR 7 MILES EAST OF SHERIDAN LAKE. SIGNS WILL BE POSTED!



TRACTORS:
 •JD 8960, 4WD, bareback
 •JD 8640, 4WD, w/Degelman 12' dozer
 •80 JD 8640, 50 series motor
 •JD 4630, w/JD 158 loader
 •'97 9680 Ford, 4WD, 4 scv's
 •JD 4020, 3pt, PTO, w/JD loader
 •JD 9420, 4WD
 •'79 7020 AC, w/JD 158 loader
COMBINES:
 •'96 JD 9600, 3,297 sep/4,683 eng
 •'95 JD 9600, 3,500 sep/5,562 eng
 •'90 JD 9600, 3,369 sep/4,986 eng
 •'89 JD 9600, 4,955 sep/7,114 eng
 •JD 9610, 4,022 sep/5,563 eng
HEADERS: •'98 36' MacDon 962-JD 653A sunflower head •4) JD 843 8-row corn heads-JD 853 rowhead w/shop built trailer •4) JD 930 grain heads-JD 212 pickup attachment-3)JD pickup head attachments •Sund pickup attachments-JD pickup head w/Sund attachment
FORKLIFTS: •'67 MF 2500 forklift, diesel, slide tilt, high lift-Toyota 01-F620H5 forklift, gas, 3,500# lift, up/down & tilt-Champion Forklift, Slant 6 Dodge
SPRAYERS: •'03 Nitro 90' sprayer, 6-cyl, 275HP, Cummins 2275 HT-Red Ball 420 12-row hooded sprayer, 3pt, 300 gal-JD 4920 sprayer, 120' boom
LIVESTOCK EQUIPMENT:
 •20) 12'x15' Winkler corral panels w/gates & pens-8' slide-in PU stock rack-Round bale feeder-2) Rectangle bale feeders

TRUCKS: •'90 Ford, L10 Cummins, Road Ranger 9spd •'87 White Volvo, 855 Cummins, 9spd •'87 White Volvo, 855 Cummins, 9spd •'85 Peterbilt, Cummins, 9spd •'80 GMC, Cummins, 10spd •'71 GMC cabover grain truck, 427 eng, Eaton 10spd w/22' Tradewind B&H •'67 GMC grain truck, V-6 eng, 4 spd, w/15' B&H
PICKUPS, VEHICLES & BOAT: •'06 Ford F350 XL, 4WD, diesel, 5 spd •'00 Ford F250, 4WD, diesel, 6 spd •'97 Dodge Ram 2500 Laramie SLT, 2 WD, 5.9 Cummins turbo diesel •'95 GMC Suburban, 4WD •'93 1500 GMC, 5.7L gas, 8' bed •'69 Starcraft 15' boat, 70HP Chrysler motor & trailer
TRAILERS: •'80 American 42' grain trl, 64' sides-6'8" x15' shop built car trl •'74 Timpte 38' grain trl, 64' sides •'09 Palmer PLB 600 fuel trl •'93 Circle "D" 20' 720 GN stock trl-1,200 gal Nurse trl-GN 14' flatbed trl-Header trailer •4,500 gal SS tanker
FARM EQUIPMENT: •JD 7000 Max Emerge 12-row planter w/Yetter row cleaners-JD 7200 vacuum planter w/fertilizer tanks-Quinstar 42' Fallowmaster-FK 9x6 blade plow, w/new style hyd Treaders-FK 9x6 blade plow w/old style pickers-JD 1600 40' Chisel, 3 section-IHC 8', 3pt tandem disc-IHC 7100 56' drill, 4) 14' sections, 12" spacing-Malsom 13' S terracer-Mainero 2230 9' grain bagger •'10 Loftness GBU 10' grain bag extractor AND MUCH MORE. **SHOP EQUIPMENT & MISC ITEMS TOO NUMEROUS TO LIST!**



NEAL MANN, Listing Agent (785-635-2102)
 "When you list with Farm & Ranch, it's as good as SOLD!"

AUCTION SCHEDULE
 3/2/12 - Informational meeting @ 10:00 AM - Noon at Burlington Community Center for Hudye Farms land auction
 3/6/12 - Farm Machinery Auction for Chuck Hawkins, et al. at Sheridan Lake
 3/9/12 - 640 acres Lane County, KS cropland & grass, 1/2 E of Dighton on Hwy 96, selling in 2 tracts and combo, Section 20-18-28 for Beesley Family
 3/14/12 - 19,000± ACRES EXCELLENT DRYLAND & IRRIGATED CROPLAND, Hudye Farms
 3/31/12 - Annual Spring Consignment Auction

628+/- ACRES LANE COUNTY CROPLAND LAND AUCTION

Friday, March 9, 2012 @ 10:30 AM, CST

AUCTION LOCATION: American Legion, Dighton

SELLERS: BEESLEY FAMILY

LEGAL DESCRIPTIONS:
 TRACT 1: N/2 of 20-18-28, less hwy acres
 •305.3 ac cropland
 TRACT 2: S/2 of 20-18-28
 •294.1 ac cropland
 •21.8± ac grass
 •400 ac wheat planted on the two tracts w/Buyer(s) to receive the landlord's 1/3rd share.

INTERNET BIDDING AVAILABLE!

"THINKING OF BUYING OR SELLING A HOME?"

CALL MELANIE TODAY

AT 785-443-0611

1047 CR 25, Colby MAGNIFICENT COUNTRY HOME

PRICE REDUCED!

345 N. Garfield
 3 Bedroom, 2 bath
 Price: \$84,950

CHECK OUR WEB SITE at www.farmandranchrealty.com
 FOR ADDITIONAL LAND, RESIDENTIAL AND COMMERCIAL LISTINGS