

To place your classified ad, mail (155 W. Fifth), fax (785-462-7749), phone (785-462-3963), or stop by our office at 155 W. Fifth

Garage Sales

419 Smith Drive Saturday, March 31, 9 a.m. - 3 p.m., and Sunday, April 1, 1 p.m. - 4 p.m.

684 W. 4th Street at Lincoln Street. Saturday, March 31, 8 a.m. - noon.

Moving Sale - Everything Goes. 1025 W. 3rd, Preview - Friday, March 30, 5:30 - 7 p.m. Sale - Saturday, March 31, 8 a.m. - 3 p.m., Sunday 1 - 4 p.m. Early Birds welcome.

760 S. Grant - Four family garage sale. Friday, March 30, 3 p.m. - 8 p.m., Saturday, March 31, 8 a.m. - 1 p.m. Furniture, appliances, collectibles, linens, household.

Yard and Estate Sale, 508 E. Hill Drive, Atwood. Friday, April 6, 8 a.m. - 6 p.m., Saturday, April 7, 8 a.m. - 1 p.m. Furniture, appliances, collectibles, linens, household.

Public Notice

IN THE DISTRICT COURT OF THOMAS COUNTY, KANSAS

In the Matter of the Marriage of David M. Bixenman and Cheryl Anne Bixenman

Case No. 12-PM-25

NOTICE OF SUIT

The State of Kansas to Cheryl Anne Bixenman. Respondent herein, and all other persons who are or may be concerned: You are hereby notified that a Petition for Divorce has been filed in the District Court of Thomas County, Kansas, praying that a divorce be granted to David M. Bixenman and you are hereby required to plead to the Petition on or before the 17th day of May, 2012, in the District Court of Thomas County, Kansas. If you fail to plead, judgment will be entered in due course upon the Petition.

David M. Bixenman, Petitioner

TODD R. STRAMEL, # 17654
Stramel Law Firm, P.A.
480 N. Franklin Ave., P.O. Box 46
Colby, Kansas 67701
(785) 460-3222
Attorney for Petitioner

(Published in the Colby Free Press on Friday, March 30, April 6, 13, 2012)

Public Notice

Notice is hereby given that a petition has been filed with the City of Colby requesting to vacate a portion of Cadillac Drive and Lincoln Drive in Murray Subdivision II in Thomas County, Kansas. Mark Bredemeier, James Denny, Denis Wieland and Jim Deibert are requesting that three (3) tracts be vacated are:

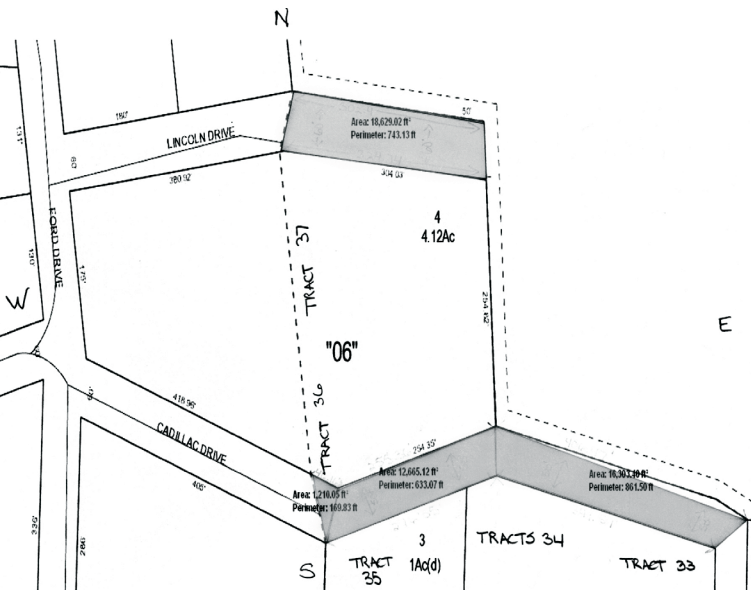
1. Vacate a portion of Lincoln Drive between the Stephens Subdivision and north of Tract 37 in the Murray Subdivision II;
2. Vacate a portion of Cadillac Drive south of Tract 36, north of Tract 35 in the Murray Subdivision II; and
3. Vacate a portion of Cadillac Drive north of Tracts 33 and 34 in the Murray Subdivision II.

Notice is hereby given that a public hearing shall be held on the 16th day of April, 2012, in the County Commissioners Room of the Thomas County Courthouse, at which time the Board of County Commissioners may approve or disapprove the petition for the vacating of said streets.

Dated this 21st, day of March, 2012.

/s/ Shelly A. Harms, Thomas County Clerk

Board of County Commissioners
Ken Christiansen, Chairman, Byron Sowers, Member, Paul M. Steele, Member



(Published in the Colby Free Press on Friday, March 30, April 6, 13, 2012)

Would you like the opportunity to earn \$30,000 working on your schedule? Do you want to be on the cutting edge of the agricultural industry? If so, this is the opportunity for you. MachineryLink is looking for motivated people to work closely with our exceptional team of Regional Sales Managers to generate interest in MachineryLink and our innovative new product Spectrayield. You create the interest and we help you close the deal! We are filling positions now. Don't miss out on this exciting opportunity! Visit www.machinerylink.com and click on Independent Product Representative to learn more.

machinerylink
THE SMARTER HARVEST™

HARVEST LAND & MINERALS

BUYING MINERALS AND RANGLAND

Interested in selling all or a portion of your minerals or ranchland? We're interested in buying. We offer THE MOST COMPETITIVE PRICES AROUND!!!

Call us today at 1-888-415-5726 or e-mail george@harvestlm.com

Collision Repair Instructor

Become a part of the NT team as a collision repair instructor in a fulltime faculty position with benefits. Ability to perform and demonstrate all aspects of collision repair and refinishing (including frame/unibody straightening, welding, plastic repair, and various types of traditional refinish techniques) required. Associate degree preferred and a minimum of two years of experience within the industry and ASE Collision Repair and Refinishing Technician certification required. Open until filled. Women and minorities are strongly encouraged to apply. Please send application, resume and three references to:

Brenda Chatfield
Vice President of Academic Affairs
PO Box 668
Goodland, KS 67735
Email: brenda.chatfield@nwktc.edu
E. O. E.



NOTICE OF NONDISCRIMINATION: NWKTC does not discriminate on the basis of race, color, national origin, religion, age, disability, or sex. Accusations concerning sexual discrimination, sexual harassment, and age discrimination should be referred to the TITLE IX COORDINATOR/AGE ACT COORDINATOR, Director of Support Services at 785-890-3641. Accusations based on disability or race, color, or national origin should be referred to SECTION 504 COORDINATOR/ADA COORDINATOR/TITLE VI COORDINATOR, Director of Student Services, located at 1209 Harrison (785-890-3641).

HomeLand REALTY AUCTION
(785) 462-8255
www.HomeLandRE.com

An Affiliate of United Country

Pat Sloan (785) 443-3261
Marilyn Meyer (785) 462-2703
Toni Lindberg (785) 443-4032
Rock L. Bedore (785) 443-1653
Tom Harrison (785) 443-0136
Jerry Wycoff (785) 672-0429

1055 S. Range Colby, KS
www.HomeLandRE.com

SO AFFORDABLE

411 Illinois, Brewster
4 BR/2 Bath
Call Pat today!

EXCLUSIVE LISTING

135 N. Grant - 4 BR/2 Bath
Call Toni today!
Exclusive to HomeLand

NEW LISTING

1025 W. 3rd
4 BR/2 Bath
Give Pat a call today!

MANY UPDATES

340 W. 8th
4 BR/2 Bath
Give Marilyn a call!

Pioneer II Sub. Lots	CONTRACT
El Chaparral Add. Lots	SOLD
411 Illinois, Brewster	\$41,500
621 Cornell, Oakley	CONTRACT
445 W. 6th	CONTRACT
940 W. 2nd	SOLD
340 W. 8th	\$69,000
407 Center, Oakley	\$79,500
135 N. Grant - Exclusive	\$79,900
340 S. School	\$88,000
112 Manchester	CONTRACT
125 E. Walnut	\$98,500
945 Mentlick	CONTRACT
460 W. 4th	CONTRACT
210 Iowa, Brewster	CONTRACT
1025 W. 3rd	\$114,900
230 S. Grant	SOLD
5 Austin Court	CONTRACT
310 S. Garfield	CONTRACT
370 S. Garfield	CONTRACT
122 W. Park, Bird City	\$149,500
1125 Wheatridge	\$159,000

NATIONAL MARKETING - PROVEN LOCAL EXPERTISE

Real Estate

Molly J. Oliver
462-5203

ATWOOD

Great Investment, 4-Plex, Solid Rent
History Atwood, KS Call Molly

LOOK

3-4 Bedroom Home, Corner Lot
Updated Kitchen 405 W. Ash \$52,500

COTTAGE

Charm & Space, 3 BR, 2 Bath & Grg
730 S. Grant \$56,000

Kevin Barnett
443-1722

ATTRACTIVE

A Home to View, 4 BR, 2 Bath
22x28 Shop 425 S. Grant \$72,500

6 BEDROOMS

Call Molly & View. 6 BR, 4 Bath
2 Car Grg 540 W. 4th \$82,500

BEAUTIFUL

A *TEN* Home. Traditional & Newer
670 N. Grant Call Molly

Stock Realty & Auction Co.
390 N. Franklin Ste. 100
Colby, KS 67701
www.stockra.com
(785) 460-7653

Follow us on Facebook

BIG KITCHEN

Updated & Open. Fantastic Kitchen
820 W. 4th 97,500

E/2 16-14-35 Logan
Call Kevin M. Barnett

STOCK REALTY & AUCTION CO.
WE SELL Land, Brokers and Auctioneers

400 +/- Acres Reno Co. KS
Selling in 6 Tracts
Auction: April 19, 2012
Follow on BigIron.com

Real Estate

FARM & RANCH REALTY, INC.

1420 W. 4TH - P.O. BO 947
COLBY, KS 67701
785-462-3904

DONALD L. HAZLETT, Broker

www.farmandranchrealty.com

1977 - 2012
35
YEARS OF
EXPERIENCE
EXPERTISE
EXCELLENCE

DON HAZLETT

We invite you to talk to one of our Real Estate professionals:

- Don Hazlett, Broker • Cindy Hake, Office Manager • Naomi Ward • Melanie Voss • Steve Hazlett • Ron Evans
- Ed Currier • Neal Mann • Mike Bailey • Scotty Legere • James Hazlett • J.D. Hinger

FARM MACHINERY & EQUIPMENT ANNUAL SPRING CONSIGNMENT AUCTION

SATURDAY, MARCH 31, 2012 @ 9:30 A.M., CDT

AUCTION LOCATION: FARM & RANCH REALTY AUCTION PAVILION 1/2 MILE WEST OF COLBY ON HIGHWAY 24.



TRACTORS: '95 JD 7800 MFWD • '73 IHC 1066 • IHC Hydro 186 w/IHC 2350 loader • NH 3045 Boomer w/attachments • Int'l 766 w/hyd bucket loader • Ford 8000 w/Westendorf loader bucket & fork attachment • JD 4630 w/JD 725 loader

PAYLOADER & SKID STEER: AC 345B • JD 170 Skid Steer

COMBINES & HEADERS: '96 JD 9600, w/JD 930 header • '95 JD 9600, w/JD 930 header • '82 IHC 1480, w/24' 810 wheat head • '78 M2 Gleaner • '01 JD 1283 corn head • Case IH 1010 wheat head

TRUCKS: '98 & '95 Peterbilt • '75 Ford LN8000 • '87 KW T800 • '82 Chevy C-70, B&H • '81 GMC, B&H • '73 Chevy C-65 Tandem w/20' Knapeheide B&H • '70 Chevy C-60, B&H • '70 Chevy C-50 tandem • '69 Chevy C-50, B&H • '74 Chevy, B&H • '64 GMC 2T • '61 Int'l

PICKUPS: '07 GMC 1500 • '95 GMC 1500 • '92 Chevy 1500

TRAILERS: '01 Timpte 50' • '98 Wheeler 34' • dbl hopper • '94 Wilson 42' grain trl • '89 Brent 40' grain trl • '83 Stoughton 42' grain trl • '81 Wilson 42' grain trl • '94 Wilson 7'x20' stock trl • '93 Great Dane 58' flatbed w/5' Loadstar hay ext • '93 Great Dane flatbed • '99 Merritt 48' cattle pot • '81 Barrett Circle B 42' cattle pot • '92 Wilson 48' dropdeck • '97 MacDon bale trl • '88 STE 6500 gal tanker trl • Donahue combine trl • '87 Utility 48' flatbed

GRAIN CARTS: '99 Orthman 996 • UFT 550 bu • Caldwell 435 bu • Hinson 812 & 815 grain carts • United Farm 500 • A&L 650T

FARM MACHINERY & SHOP EQUIPMENT: Friesen 220 seed tender • Friesen 4 box seed tender • JD LZ 8-12 drills • Miller 22' rod weeder • JD 9300 32' drill • Krause 5200 drill • Kinze 3200 planter • JD 9400 40' drills • JD 8300 disc drills • 2) Krause 32' discs • Bush Hog field cultivator • Case IH 30' 3pt, injector • FK 5x5 blade plow • Krause 20' disc • FK 30' blade plow • 10' Speedmover • Roto Grind tub grinder • Blue Jet caddy • DMI caddy • 750 gal diesel fuel tank • 2,500 gal fuel tank • 1,000 gal fertilizer tank trl • 1,000 gal row tracker trl • Dixon ZTR3304 Mower • Grasshopper CH185 mower • Coats 10-10 tire chenger • 2) 10,000 gal fiberglass tanks • Patriot sprinkler track filler • Melrose 220 Spra coupe, 30' boom • Broyhill 1,000 gal pull type sprayer, 60' boom • '05 Bean huster seed vac

HAY EQUIPMENT: Haybuster 256 plus II bale feeder • JD 510 round baler • Vermeer round baler • Vermeer R34 double rake

LIVESTOCK EQUIPMENT: NH 195 manure spreader • Portable wheel corral • WW portable calf cradle • Self catch head gate • 2) Loading chutes • hog & cattle panels AND **MANY MORE ITEMS TOO NUMEROUS TO LIST!**



CHECK OUR WEBSITE FOR ADDITIONAL LISTINGS & VIRTUAL TOURS!

AUCTION SCHEDULE

3/31/12 - Annual Spring Consignment Auction
4/10/12 - 640 ac exc cropland, W of Towner in Kiowa County, Colorado - S/2 of 26-18-43 & W/2 of 21-18-43, all open & ready for spring planting

4/17/12 - 640 ac (square section) CRP, alfalfa bottoms & grass