

Classifieds

To place your classified ad, mail (155 W. Fifth), fax (785-462-7749), phone (785-462-3963), or stop by our office at 155 W. Fifth

Notices

Thomas County Landfill is taking sealed bids on one 1965 Galion T-500 motor grader. Runs, but needs radiator replaced and other repairs. One 1995 GMC pickup with 216,000 miles. Needs transmission replaced. Both units sold 'as is'. Submit sealed bid to the Thomas County Clerk by Mon. May 7th at 10:00 a.m. Thomas County reserves the right to accept or reject any bid. Info call 785-462-8139.

Spring Cleaning? Carpet Cleaning Special! 3 rooms only \$159.95! Dry-Foam safe & green seal approved. Serving NWKS mileage free since 1987. A+ Cleaners 785-538-2526 or 785-443-5400 - Johnene Cheney.

Burlington Gun & Coin Show, Burlington, CO 80807. April 21 and 22, 2012. Burlington Community Center, 340 S. 14th St.. Saturday from 9 a.m. - 5 p.m. and Sunday from 9 a.m. - 4 p.m..

Dan is back! Dan Geschwentner. Small remodeling and repair jobs. Call 785-443-3673.

Classified ad deadlines (word ads only). Noon the day before publication (noon Friday for Monday paper). Please check your ad the first time it runs. If you find an error, please call at (785) 462-3963 so it can be corrected, since we will not be responsible for errors after that first day. The Colby Free Press.

Help Wanted

Outside Sales Position. Company is expanding and been in business 30 yrs. Base salary + commission + benefits. 469-260-8545.

HOMESTEAD Nutrition Projects accepting applications for an assistant cook at the Colby Sr. Center M-F, 7:30-1:00. KPERS retirement, vac/sick pay, major holidays off. For more information call 1-800-432-7422. EOE

Full-time oil field hand for local job. Excellent pay w/benefits. Must have drivers license and pass a drug test. Call 785-623-7999.

Parts-man needed at Farm Implement & Supply, Colby. Computer skills and good customer service skills needed. Good benefits included. Call John at 785-462-2411.

Help Wanted

Colby Fertilizer Inc. has an opening for a full time position. Must have or be able to acquire a class A CDL. Competitive wages and benefits. Call 785-462-6440.

Sale Rep/Territory Manager Full Time Excellent Opportunity for experienced sales professional. 94 year old business is seeking an experienced sales person to sell and service accounts for agricultural and light construction equipment sales to dealers in our western sales area. Salary plus commission, benefits package, vehicle provided & expenses paid. CDL a plus. Send Resume to Attn: Ag Dept, P.O. Box 3207, , KS 67201 OR tprice@price-broseq.com.

Bookkeeper - Tubbs & Sons Ford Sales is accepting applications for a full-time position in its bookkeeping department. Applicant must have excellent communication and computer skills to include the Microsoft office suite. Excellent pay and benefit package. Call 800-369-3673 or pick up an application at 810 S. Range, Colby KS. Tubbs and Sons Ford Sales is an EOE.

Drivers needed for the Spring Season. Class A or B CDL with Hazmat endorsement or ability to obtain. Clean MVR. Must pass Drug Screen and DOT physical. Home every night. Apply in person at Rosen's Inc. 60 Stephens Drive, Colby or call 785-460-1330 for more information.

Help Wanted: Oasis Travel Center, Starbucks, Quizno's, and Baskin Robbins 700 West Horton Ave.. Apply within. No phone calls please.

Now Hiring! RN's, LPN's, and CNA's. FT and PT. Competitive wage scale. Apply in Person at Deseret Health & Rehab at Colby (formerly Colby Care Center) 105 E. College Dr, Colby, KS or contact Cheryl or Kay at 785-462-6721.

Venture Corporation now hiring for CDL class A and B drivers, laborers, and flaggers for the Logan Co. area. Apply at 214 S. Hwy 281 Great Bend, KS or call Leslie at 620-792-5921. Equal employment opportunity.

Full time help needed 8 a.m. - 5 p.m. M-F. Only have 1-2 co-workers. Start ASAP. Working with nice clothes at Oakley Cleaners, Oakley, KS. Call Maxine 785-672-1012.

Help Wanted

Holiday Inn Express is looking for a full time front desk agent. Must have flexible schedule and be able to work evenings and some weekends. We offer competitive wages and paid vacation time. Apply in person at 645 W. Willow, Colby, KS.

Colby Implement is looking for 2 dedicated and ambitious office professionals for our growing office. We have an immediate opening for a person experienced in payroll processing. The 2nd position is for a secretary-receptionist. Computer skills are necessary. Benefits include, Blue Cross and Blue Shield, AFLAC, Cafeteria Plan 125, 401K, Sick and Vacation Leave. EOE. Please leave your resume at Colby Implement, 405 W. Horton, Colby, KS 67701 785-462-3391.

Public Notice

IN THE DISTRICT COURT OF THOMAS COUNTY, KANSAS

In the Matter of the Marriage of David M. Bixenman and Cheryl Anne Bixenman Case No. 12-PM-25

NOTICE OF SUIT

The State of Kansas to Cheryl Anne Bixenman, Respondent herein, and all other persons who are or may be concerned: You are hereby notified that a Petition for Divorce has been filed in the District Court of Thomas County, Kansas, praying that a divorce be granted to David M. Bixenman and you are hereby required to plead to the Petition on or before the 17th day of May, 2012, in the District Court of Thomas County, Kansas. If you fail to plead, judgment will be entered in due course upon the Petition.

David M. Bixenman, Petitioner

TODD R. STRAMEL, # 17654 Stramel Law Firm, P.A. 480 N. Franklin Ave., P.O. Box 46 Colby, Kansas 67701 (785) 460-3222 Attorney for Petitioner

(Published in the Colby Free Press on Friday, March 30, April 6, 13, 2012)

Help Wanted

Wanted - Night time bartender. Apply in person 310 N. Franklin.

Atwood - Hiring All Positions. Are you working for a company that has given you credit for your past related work experience? If not, consider Developmental Services of Northwest Kansas. DSNWK will consider additional credit above the base wage for past related work experience. DSNWK is an agency with a family friendly culture with excellent benefits such as KPERS retirement, life insurance, health insurance, cafeteria medical reimbursement, AFLAC, vacation and sick. DSNWK currently has three full-time and one part-time position available in Atwood. Apply online at www.dsnwk.org or in person at: DSNWK, Prairie Development Center, 208 S. 4th, Atwood, KS 67730. 785-626-3688 EEO.

Wanted - Experienced Truck Driver. Good pay, benefits, decent home time. Jack 785-675-8375 or Jim 785-675-2196.

Help Wanted

Progressive family farm/ranch in NW Kansas looking for full-time help. Must be responsible in a non-smoking environment and be a motivated self starting individual. Duties include cow calf, row crop, small grains, alfalfa, and equipment maintenance. Experience preferred but will train the right person. Very competitive wages w/housing and benefits. References required, please email resume to bigbrozieg@yahoo.com or mail to Ziegler Farms, P.O. Box 127, Grainfield, KS 67737. 785-673-9944.

City Limits is now hiring both bartenders and kitchen personnel. Willing to train the right applicant. Apply in person 2227 S. Range.

Carriers needed to deliver the Colby Free Press! Great for someone needing extra income. A few hours a day, 4 days a week. Bonus after 3 months. To apply please stop by the office at 155 W. Fifth St., Colby or for questions call 785-462-3963.

Now hiring for all positions. Apply between 6 a.m. - 1 p.m., Monday - Saturday. See Don or Tammy at Village Inn Restaurant, 2215 S. Range.

Help Wanted

Trinidad Benham Corporation has an excellent opportunity for a Production Manager based in Imperial, NE. Must have recent management or supervisory experience in a manufacturing/production environment. Apply to hr@trinidadbenham.com or online at www.trinidadbenham.com.

Needing someone to deliver newspaper bundle to Oakley 3 to 4 times a week in the afternoon. This would be great for someone who already commutes to Colby from Oakley. Please call the Colby Free Press if interested. 785-462-3963.

Child Care

Licensed Day Care in Colby has openings for 0 to 4 year olds. 785-269-7509.

Misc for Rent

Roll off boxes. Great for construction projects. Call for details. 785-443-1339.

Real Estate



(785) 462-8255
www.HomeLandRE.com

An Affiliate of United Country

Pat Sloan (785) 443-3261
Marilyn Meyer (785) 462-2703
Toni Lindberg (785) 443-4032
Rock L. Bedore (785) 443-1653
Tom Harrison (785) 443-0136
Jerry Wycoff (785) 672-0429

1055 S. Range Colby, KS
www.HomeLandRE.com

FARMSTEAD - 41 ACRES



6403 Old Hwy. 40, Park
3 BR - 2 Car Garage & Workshop
Call Rock Today!

COMMERCIAL LISTINGS

2-6 acre lots located along I-70 frontage, Colby, KS. Give Marilyn a call today!
280 E. 4th, Colby, KS Big opportunity at small cost. \$47,500 PRICE REDUCED Call our office today!
1690 W. 4th, Colby, KS Well maintained dental office with over 2,100 sq. ft. \$160,000 Give Marilyn a call today!
217 Center, Oakley, KS Our Place-restaurant with all equipment included. \$180,000 Give Jerry a call today!
1675 W. 4th, Colby, KS Use the warehouse and let the office lease help with payments. \$195,000 Call Pat for details!
464 Highway 83, Oakley, KS Colonial Steak House. Excellent opportunity, some owner financing available. \$350,000 Call Tom!
Commercial lot 6.7 acres adjacent to Wal-Mart with I-70 frontage, Colby, KS (Can be split) \$545,000 Call Rock!
Commercial lot 10 acres North of Interstate between Franklin & Country Club Drive East of Bourquins. (Can be split) Call Tom!

AGLAND LISTINGS

6403 Old Hwy. 40, Park, KS 41 acres grassland, three bedroom house & several out-buildings. \$149,500 Call Rock today!
480 acres Sherman County, KS Cropland Good productive land with a homestead. - UNDER CONTRACT
160 acres Thomas County, KS Dryland 11 North & 1 1/2 West of Levant. Immediate possession. All minerals to Buyer. \$3,500/acre Call Rock!

Public Notice

Notice is hereby given that a petition has been filed with the City of Colby requesting to vacate a portion of Cadillac Drive and Lincoln Drive in Murray Subdivision II in Thomas County, Kansas. Mark Bredemeier, James Denny, Denis Wieland and Jim Deibert are requesting that three (3) tracts be vacated are:

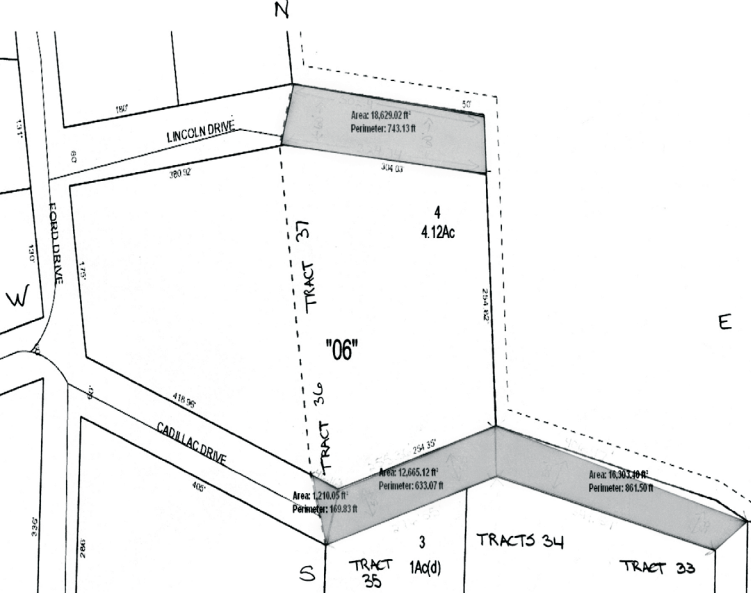
1. Vacate a portion of Lincoln Drive between the Stephens Subdivision and north of Tract 37 in the Murray Subdivision II;
2. Vacate a portion of Cadillac Drive south of Tract 36, north of Tract 35 in the Murray Subdivision II; and
3. Vacate a portion of Cadillac Drive north of Tracts 33 and 34 in the Murray Subdivision II.

Notice is hereby given that a public hearing shall be held on the 16th day of April, 2012, in the County Commissioners Room of the Thomas County Courthouse, at which time the Board of County Commissioners may approve or disapprove the petition for the vacating of said streets.

Dated this 21st, day of March, 2012.

/s/ Shelly A. Harms, Thomas County Clerk

Board of County Commissioners
Ken Christiansen, Chairman, Byron Sowers, Member, Paul M. Steele, Member



(Published in the Colby Free Press on Friday, March 30, April 6, 13, 2012)



"Job Fair"
Mitten's Travel Plaza
Thursday April 12th from 1pm to 6pm

Full and Part Time Positions available in all departments; Shop, Convenience Store and Restaurant!

Tired of your current job? Feel like you're going nowhere? Mitten's Travel Plaza offers flexible scheduling, paid training and an opportunity to develop your skills and career! Just looking for summer work? Mitten's offers great opportunities for seasonal employment as well. Come check us out!

Compensation package includes; competitive wages, Blue Cross Blue Shield Insurance, Profit Sharing, 401K, Paid Vacation, Bonus Program, Fuel, Tire and Food Discounts.

Can't make the fair? Apply on-line at
www.mitteninc.com

Mitten's Travel Plaza is an EOE - Employee Drug Screening

DON'T TRUST YOUR MOST IMPORTANT ASSET TO JUST ANOTHER BANK
FROM OUT OF TOWN, WORK WITH SOMEONE YOU KNOW AND TRUST


- ◆ 15 year loans @ 3.25% (3.336% APR)
- ◆ 20 year loans @ 3.75% (3.817% APR)
- ◆ 30 year loans @ 4.00% (4.049% APR)

All loan decisions are made locally and serviced locally by Colby's **only** hometown bank. Borrow with us and make your payments at Farmers & Merchants Bank.

- ◆
- ◆
- ◆

*Rates may change without notice subject to market conditions. APR based on a loan of \$100,000, actual fees may vary. Mortgage products are subject to change and availability. The actual mortgage product you qualify for will depend upon the verification of the value of your home, your credit score and other considerations.

*Rates shown assume Single Family Residence, Conventional Loan, 80% Loan to Value, Excellent Credit




Farmers & Merchants
Bank of Colby

The Bank of Choice

240 W. 4th St. ■ Colby, KS ■ 785-460-3321
www.fmbcolby.com

Member FDIC Equal Housing Lender



Jacque Golemboski
Mortgage Loan Officer

Real Estate

AGENTS

Pat Sloan (785) 443-3261
Marilyn Meyer (785) 462-2703
Toni Lindberg (785) 443-4032
Rock L. Bedore (785) 443-1653
Tom Harrison (785) 443-0136
Jerry Wycoff (785) 672-0429



1055 S. Range Colby, KS
www.HomeLandRE.com

(785) 462-8255
www.HomeLandRE.com

An Affiliate of United Country

WANTED
RESIDENTIAL LISTINGS
CALL US TODAY!

Our Agents have the Expertise and Understand Quality Service!



Owner: Rory Bedore & Agents



112 Manchester, Brewster



460 W. 4th



210 Iowa, Brewster



5 Austin Court



310 S. Garfield



1025 W. 3rd



407 Center, Oakley



370 S. Garfield



940 W. 2nd



445 W. 6th



945 Mentlick