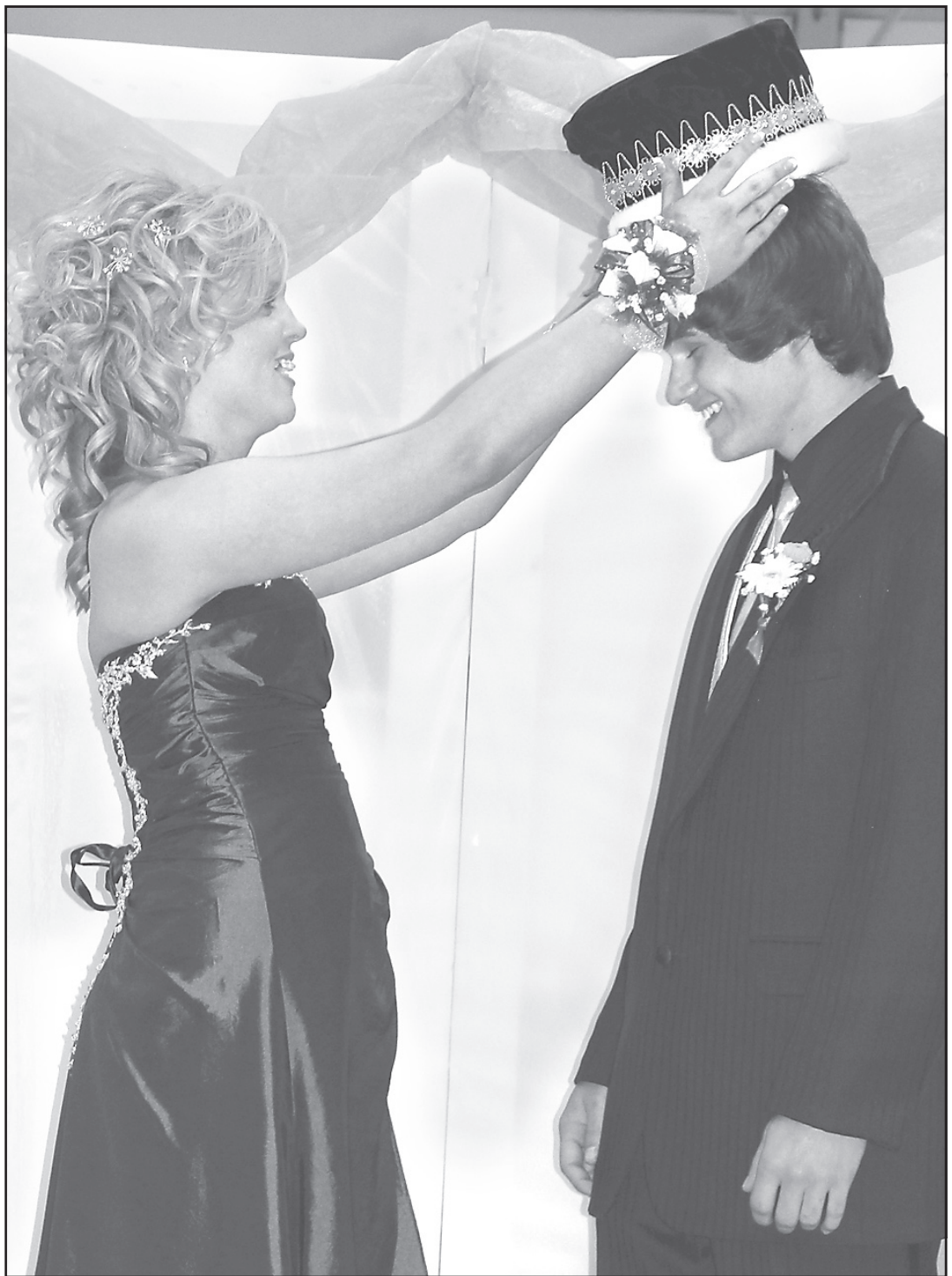


Rexford starts off prom season



JUDY ROGERS/Golden Plains High School
Prom Queen Katrina Griggs crowned King Kalyn Weber at the Golden Plains High School Prom on Saturday. The crowning was followed by dinner, dance and post-prom activities.

Renewals on licenses to see delay during May

TOPEKA (AP) – The Kansas Department of Motor Vehicles won't be able to provide some services while it installs a new computer system during the first week of May.

The department says the new computer system will combine three old systems into one, providing more efficiency.

Because of the upgrade, state and county offices won't issue driver's licenses and identification cards or process vehicle titles and registrations from May 1 to 7. People who have licenses or registrations expiring in April or the first week of May might want to renew before April 30, officials said.

The Garden City Telegram reports (bit.ly/HZ6jv7) the transfer of 6.8 million vehicle registration records will begin Monday, April 30. The new system is expected to be ready to go Tuesday, May 8.

Public Notice

NOTICE OF PUBLIC HEARING

Public notice is hereby given pursuant to K.S.A. 1990 Supp. 79-251(b) that the Board of County Commissioners of the County of Thomas, Kansas, will conduct a public hearing on **Monday, April 30, 2012 at 9:00 a.m. at the Thomas County Courthouse** in Colby, Kansas in regard to the application of Pestinger Beverage Co., Inc. for a property tax exemption prepared to be granted by the County pursuant to Article 11, Section 13 of the Kansas Constitution for the building construction and related equipment to be used by the applicant for the storing of goods traded in interstate commerce. The property proposed to be exempted is located in the county of Thomas at 2108 E. Hwy 24, Colby, Kansas. The governing body of the county will not adopt a resolution authorizing the granting of such exemption until said public hearing has been concluded.

A copy of the Notice, together with a copy of the application of Pestinger Beverage Co., Inc. for the tax exemption, its supporting exhibits and the report by the Thomas County Economic Development Alliance staff evaluating the application and performing the cost benefit analysis required by K.S.A 1990 Supp. 79-251(a) (1) are on file in the office of the County Clerk and are available for public inspection during normal business hours.

All persons having an interest in the matter will be given an opportunity to be heard at the time and place above specified.

DATED: April 16, 2012
County of Thomas, Kansas
Christy Rocca, Director
Thomas County Economic Development Alliance

(Published in the Colby Free Press on Monday, April 16, 23, 2012)

On the Beat

COLBY POLICE Wednesday

2:19 a.m. – Highway patrolman requested police unit to obtain information for his accident.

4:06 a.m. – Assisted sheriff's office with prisoner.

5:28 a.m. – Caller wanted an officer to escort her to her vehicle. Escorted subject to her residence.

7:43 a.m. – Caller reported two dogs at large at the courthouse. Unable to locate.

8:06 a.m. – Caller reported dog at large at Franklin and Summit. Unable to locate.

9:29 a.m. – Civil stand-by.

11:39 a.m. – Caller reported dog at large. Uncatchable.

12:26 p.m. – Spoke to subject on phone about civil matter.

2:55 p.m. – Caller reported potential allegations. Provided information, no report at this time.

6:27 p.m. – Report filed for lost wallet.

THOMAS COUNTY SHERIFF Wednesday

Public Notice

NOTICE OF PRIMARY ELECTION FOR THOMAS COUNTY, KANSAS

Per K.S.A. 25-204 you are hereby notified that a Primary Election will be held on Tuesday, 7th day of August, 2012. Candidates for the following offices will be nominated by each political party which has qualified to participate in the Primary Election.

- ONE candidate for United States Representative - Districts to be determined
- ONE candidate for State Senate - Districts to be determined
- ONE candidate for State Representative - Districts to be determined
- ONE candidate for Member, State Board of Education - Districts to be determined
- ONE candidate for District Court Judge, 15th District, 1st and 2nd Divisions
- ONE candidate for District Magistrate Judge, 15th District, 5th Position
- ONE candidate for County Commissioner, District #2
- ONE candidate for County Commissioner, District #3
- ONE candidate for County Attorney
- ONE candidate for County Sheriff
- ONE candidate for County Treasurer
- ONE candidate for County Register of Deeds
- ONE candidate for County Clerk
- ONE candidate for Township Treasurer of each Township
- ONE candidate for Township Trustee of each Township

The following offices will be elected in each political party, which has qualified to participate in the Primary Election.

- ONE candidate for Precinct Committeeman in each Precinct
- ONE candidate for Precinct Committeewoman in each Precinct

IN TESTIMONY WHEREOF, I hereto set my hand and cause to be affixed my official seal, this 5th day of April, 2012.

/s/ Shelly A. Harms
Thomas County Election Officer

(Published in the Colby Free Press on Monday, April 9, 16, 23, 2012)

2:58 p.m. – Released Robert Lee Nathaniel Adams.

Public Notice

IN THE DISTRICT COURT OF THOMAS COUNTY, KANSAS CIVIL DEPARTMENT

MetLife Home Loans, a Division of MetLife Bank, N.A. Plaintiff,
vs.

Mona M. Chase a/k/a Mona M. Chase; Unknown Heirs of Paul E. Chase, deceased; John Doe (Tenant/Occupant); Mary Doe (Tenant/Occupant); Unknown Spouse, if any, of Betty E. Chase; Betty E. Chase, Defendants.)

Case No. 12CV33
Court Number:
Pursuant to K.S.A. Chapter 60

NOTICE OF SUIT

The State Of Kansas, to the above-named defendants and the unknown heirs, executors, administrators, devisees, trustees, creditors and assigns of any deceased defendants; the unknown spouses of any defendants; the unknown officers, successors, trustees, creditors and assigns of any defendants that are existing, dissolved or dormant corporations; the unknown executors, administrators, devisees, trustees, creditors, successors and assigns of any defendants that are or were partners or in partnership; the unknown guardians, conservators and trustees of any defendants that are minors or are under any legal disability; and the unknown heirs, executors, administrators, devisees, trustees, creditors and assigns of any person alleged to be deceased, and all other persons who are or may be concerned.

You are notified that a Petition has been filed in the District Court of Thomas County, Kansas, praying to foreclose a real estate mortgage on the following described real estate:

All of Lots One (1), and Two (2), Block Twenty-Eight (28), South Park Annex to South Park Addition to the City of Colby, Thomas County, Kansas, as shown by the recorded plat thereof, commonly known as 410 Garfield Avenue South, Colby, KS 67701 (the Property)

and all those defendants who have not otherwise been served are required to plead to the Petition on or before the 29th day of May, 2012, in the District Court of Thomas County, Kansas. If you fail to plead, judgment and decree will be entered in due course upon the Petition.

NOTICE

Pursuant to the Fair Debt Collection Practices Act, 15 U.S.C. §1692c(b), no information concerning the collection of this debt may be given without the prior consent of the consumer given directly to the debt collector or the express permission of a court of competent jurisdiction. The debt collector is attempting to collect a debt and any information obtained will be used for that purpose.

Prepared By:
South & Associates, P.C.
Kristen G. Stroehmann (KS # 10551)
6363 College Blvd., Suite 100
Overland Park, KS 66211
(913)663-7600
(913)663-7899 (Fax)
Attorneys For Plaintiff
(86129)

(Published in the Colby Free Press on Monday, April 16, 23, 30, 2012)

Senior volunteers to be recognized

The Northwest Kansas Retired and Senior Volunteer Program plans to celebrate National Volunteer Week, a time dedicated to honoring all persons who volunteer their time and talents within the community.

The Annual RSVP Banquet and Dance is planned for 5 p.m. Wednesday at the City Limits Convention Center in Colby. The event will honor the program's volunteers from Colby and surrounding communities, including Brewster, Oakley, Selden, Winona and Phillipsburg.

The Northwest Kansas program began in Colby in 1973 and receives funding from the federal agency, the Corporation for National and Community Service. Colby Community College is the local sponsor.

The program provides opportunities for people 55 and older to participate in the life of their community through volunteer service. Volunteers work at 73 work stations in area communities. Many require volunteers on a regular basis, such as libraries, museums, nursing homes and food banks. Others require volunteers now and then.

If you are over 55 and would like to volunteer, please contact Laura Withington, program director, at (785) 462-6744.

USE THE CLASSIFIEDS! 785-462-3963

BUSINESS DIRECTORY

To have your ad placed in the Business Directory call Sharon or Kathryn today
785-462-3963

NEED EXTRA MONEY?

Be a Newspaper Carrier!

155 W. 5th Street • 785.462.3963

Call us or stop by!

Dr. Tom Barlow
DENTIST

785-460-7538

Appointments Readily Available

505 H N. Franklin, Colby

UNDER NEW MANAGEMENT

Mobile Home Lots for Rent

\$165 Month
(includes water, sewer & storage shed)

FREE Month with approved application

Friendly Acres Mobile Home Park

1150 S. Franklin, Colby
Call 785-462-6445

Auto | Home | Life

Call today to see how I make insurance simple and can help you protect what matters most.

David Browne III
550 N. Franklin
Colby, KS 67701
785-462-3388

FARM BUREAU FINANCIAL SERVICES
Insurance • Investments

Securities & services offered through FBL Marketing Services, LLC*, 5400 University Ave., West Des Moines, IA 50266, 877/860-2904, Member SIPC, Farm Bureau Property & Casualty Insurance Company**, Western Agricultural Insurance Company***, Farm Bureau Life Insurance Company**/West Des Moines, IA. *Affiliates **Company providers of Farm Bureau Financial Services PC026-ML-BC (2-12)

NEW SYSTEM

PROFESSIONAL WINDOW CLEANING

(800) 611-6735

www.MyWindowCleaner.net

Serving Colby since 1992!

Commercial • Residential • Free Estimates

ROOFMASTERS

Serving Colby for over 30 YEARS!

425 East Hill, Colby, KS
785-462-6642

RESIDENTIAL	COMMERCIAL
Heritage Shingles	EPDM Rubber
Wood Shingles	Licensed
IR Shingles	Bonded
Stone Coated Steel	Insured
Metal Panels	FREE ESTIMATES
	Elastomeric Coating

WHO YA GONNA CALL?

Meadow Lake Restaurant & Lounge

Monday Nights \$1 Draws

Saturday Nights Prime Rib

MEADOW LAKE
GOLF COURSE & RESTAURANT

785-460-6443
1085 E Golf Club Rd. • Colby, KS

THOMAS COUNTY INSURANCE AGENCY

Serving NW Kansas for over 100 years.

Representing many companies to provide all your insurance needs:

- Home, Auto, Boat, Motorcycle, RV
- Farm and Crop Insurance
- Commercial Property, Automobiles
- General Liability, Workers Compensation
- Inland Marine, Builders Risk
- Auto Service Shops
- Body Shop and Collision Repair
- Contractors
- Restaurants
- Salons and Day Spas
- Strip Malls, Condominiums
- Churches, Schools, Day Care Centers

* For great coverage and customer service contact me!

Dennis R. Tubbs/Agent

P.O. Box 506 • 490 N. Franklin
Ph: 785-462-3939 • Fax: 785-462-3752
dtubbs@thomascountyins.com • www.thomascountyins.com

Baalmann Mortuary

190 S. Franklin • P.O. Box 391 • Colby, KS 67701
(785)462-2331

"Family Serving Families"

- Funeral & Cremation Services
- Monuments & Prearrangements

All Harrison Chapel Prearrangements will be honored

High Plains RV Resort

Live at the resort in your RV Oakley/Colby!

Live in your RV at the #1 rated RV resort in Kansas. \$495 monthly rent - includes water, sewer and electric.

Hot tub, clean restrooms, Propane available, clubhouse and laundry room. We only have a few sites available for monthly guests, so call us now.

High Plains RV Resort • (785)672-3538 • www.HighPlainsCamping.com

We sell PROPANE PROPANE PROPANE!