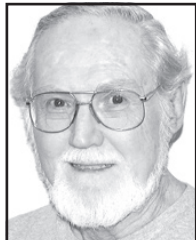


Cosmic baseball prominent in evenings

With the baseball season now underway, it's fitting that the Cosmic Baseball region is prominent in the early evening sky. It doesn't take much imagination to hear the fans cheering as the players round the bases – but perhaps your imagination needs a little help finding the bases.



Paul Derrick
● Stargazer

When I was a youngster growing up on Galveston Bay, my stargazing mentor, Margaret Willets, identified for me a popular informal pattern of four stars known as the Diamond of Virgo. Not an official constellation, its stars are from the constellations Bootes, Virgo, Leo and Canes Venatici. But unfortunately, without Mrs. Willets, I just couldn't find the diamond on my own.

Years later when I was learning the night sky in earnest, I still had trouble finding that elusive diamond – until I began thinking of it as a baseball diamond. With that visualization, my imagination filled out the entire playing field, creating the Cosmic Baseball region. It helped me learn the constellations of an entire section of the spring and summer night sky, and maybe it can help you too.

While the Diamond of Virgo isn't a perfect square, it's close enough to use for our infield. Locate the Big Dipper high overhead and follow the arc of its handle three fist-widths (held at arm's length) to Arcturus ("arc to Arcturus"), a bright orange star now midway up in the southeast. That's home plate.

Continue the arc another three fist-widths to Arcturus' lower right to the bright white star Spica, our first base. At Spica, turn left (up) and go just over three fist-widths to second base – the somewhat fainter star Denebola at the tail of Leo the Lion. Make yet another left turn and go three fist-widths to the upper left to third base, the even fainter star Cor Caroli situated beneath the arc of the handle of the Big Dipper. And that com-

pletes the infield of our cosmic baseball field. (We'll have to fill out the remaining outfield constellations another time.)

Note that the planets Saturn and Mars, not ordinarily part of the Cosmic Baseball region, are passing through the playing field this year. Proceeding from Arcturus (home plate), and just before reaching Spica (first base), the creamy-colored Saturn slightly outshines first base. And two fist-widths beyond Denebola, in the outfield, is reddish Mars, now matching Arcturus in brightness as well as color.

Keep in mind that throughout the night, and as the seasons progress, the entire Cosmic Baseball region gradually moves across the sky in a generally westward direction. Spica, for example, is now seen in the south in the early evening, but later in the night it will be in the southwest, and by morning will be setting in the west. Still, the positions of the stars relative to each other, and the distances between them, won't change. So, batter up.

Night Sky Events

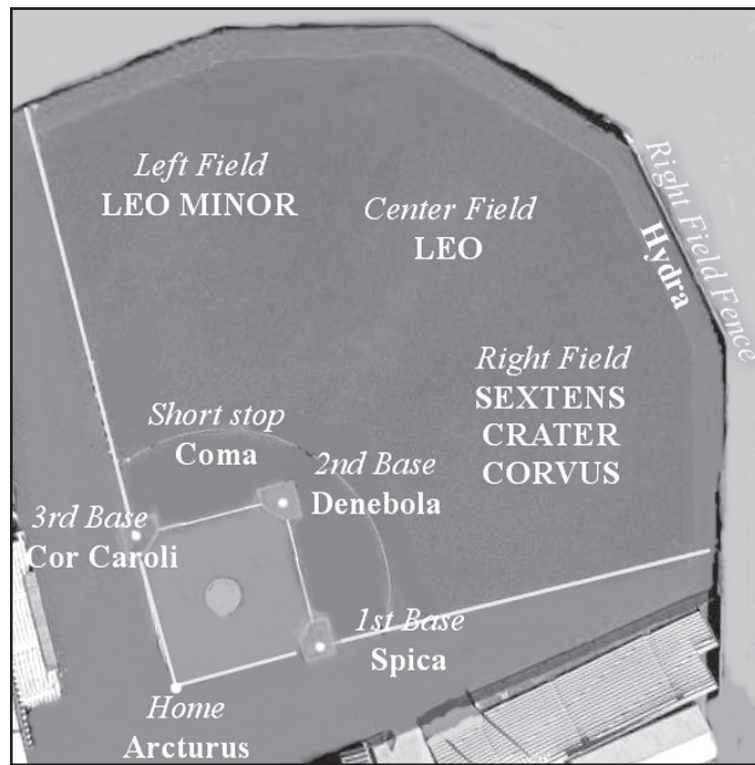
Held at arm's length, the width of your fist is 10° and the width of your index finger is 1°. The width of a full Moon is 1/2°.

May 1 Sunday: May Day and Beltane, a cross-quarter day celebrating the middle of spring.

3 Friday all night: The nearly full Moon travels across the sky with the star Spica (nearest the Moon) and the planet Saturn (slightly brighter).

5 Saturday morning: The Eta Aquarid meteor shower peaks but the Moon makes this an unfavorable year.

5 Saturday: The full Moon



Cosmic Baseball Region shown in relation to baseball field.

is called the Milk Moon, Flower Moon, Corn Moon and Planting Moon; as this full Moon occurs with the Moon at perigee (nearest Earth in its elliptical orbit) it will appear slightly larger than usual and will produce higher-than-average tides in coastal regions.

6 Sunday evening: "Evening star" Venus passes less than two moonwidths to the lower left of the moderately bright star El Nath, the star marking the tip of the right horn of Taurus the Bull.

12 Saturday morning: The Moon is at third quarter.

20 Sunday evening: The new Moon produces a partial solar eclipse – see feature box.

20 Sunday evening: Saturn passes above Virgo's brightest star Spica high in the south; for an added treat with binoculars, look for two fainter stars near creamy-colored Saturn – a white star to the upper right and reddish star to the upper left – both within a moonwidth of Saturn.

22 Tuesday early evening: A thin crescent Moon is to the left of Venus near the western horizon at

dusk.

28 Monday evening: The first quarter Moon is below Mars high in the southwest with Leo's brightest star Regulus to their right.

31 Thursday evening: Virgo's alpha star Spica is just above the waxing gibbous Moon with slightly brighter Saturn above Spica.

Early Evenings: During the early evenings of May, the Milky Way lies flat around the horizon, making it seem to disappear.

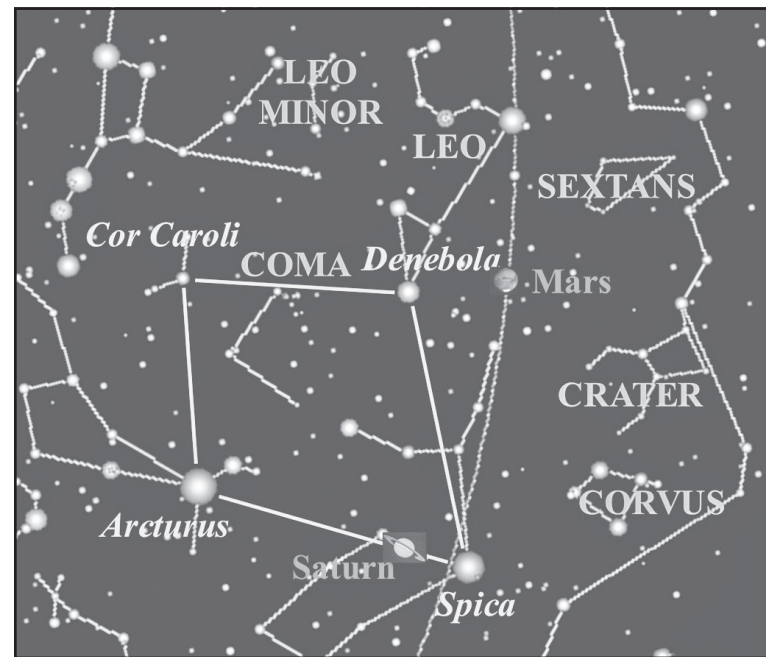
Naked-eye Planets

The Sun, Moon and planets rise in the east and set in the west due to Earth's west-to-east rotation on its axis.

Evenings: Venus, Mars, Saturn
Mornings: Mercury (early in month), Saturn (low)

• Mercury starts the month low in the east before sunrise, sinks into the morning Sun's glare by mid-month, and passes behind the Sun at month's end.

• Venus, still the brilliant "evening star," begins the month high in the west-northwest after sunset; it then begins its rapid move toward the setting Sun and by



Cosmic Baseball Region shown on star field.

month's end sets soon after the Sun.

• Mars, high in the south in the evening, sets in the wee hours of morning.

• Jupiter spends the month hidden in the glare of the Sun.

• Saturn is well up in southeast in the evening and sets before dawn.

Astro Milestones

May 18, 1910: Earth flew through the tail of Halley's Comet, creating panic among the more

gullible who bought gas masks and anti-comet pills to protect them from the "deadly gasses." Imagine the panic the charlatans could have caused had they had today's Internet.

Paul Derrick is an amateur astronomer who lives in Waco, Texas. His website (www.stargazerpaul.com) has past columns and basic stargazing information. Contact him at paulderrickwaco@aol.com or (254) 723-6346 or write 918 N. 30th St., Waco, Texas, 76707.

Public Notice

NOTICE OF PUBLIC HEARING ON PROPOSED REZONING IN THOMAS COUNTY, KANSAS

TO ALL PERSONS CONCERNED:

You and each of you are hereby notified that the Colby/Thomas County Metropolitan Area Planning Commission will hold a Public Hearing in the Council Chambers of City Hall, 585 N. Franklin Avenue, Colby, Kansas, at 9:30 A.M. on Thursday, May 10, 2012, to hear a request for a zoning change from County I-1 (Industrial District) to County S-1 (Suburban District) from owners of land as follows:

Carl and Lee Woofler, owners of property more particularly described as follows:

A tract of land containing 40± acres located at SE/4SW/4 of 35, 7-34

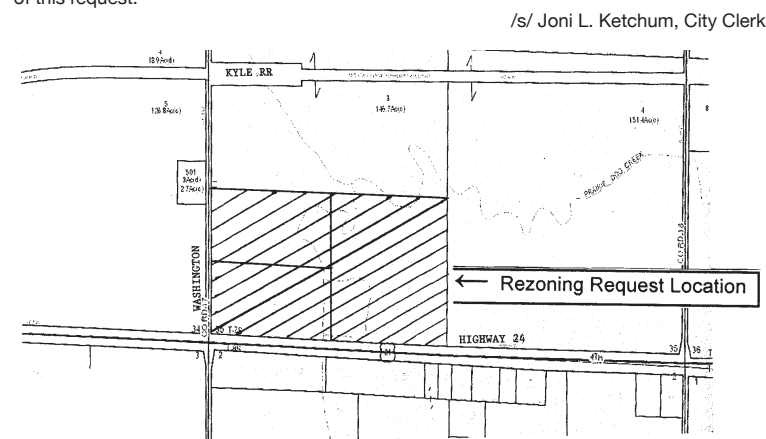
Brian Downing, owner of property more particularly described as follows:

A tract of land containing 20± acres located at N/2SW/4SW/4 of 35, 7-34

Ryan & Katherine J. Ortner, owners of property more particularly described as follows:

A tract of land containing 20± acres located at S/2SW/4SW/4 of 35, 7-34

According to Kansas Statutes, all property owners in a radius of 1000 feet will be notified of this request.



(Published in the Colby Free Press on Thursday, April 19, 2012)

Statewide job fair Tuesday in Dodge

Job seekers across the state should plan to attend the 2012 Kansas Statewide Job Fair. The free job fair is sponsored by Kansasworks, the Kansas Economic Development Alliance and the Employer Support of the Guard and Reserve. More than 75 companies will be represented.

The job fair will be from 2:30 to 6:30 p.m. Tuesday at the United Wireless Arena, 4100 Comanche St., Dodge City. The event will be open exclusively to military personnel, military spouses and veterans from 2:30 to 3:30

p.m. The event opens to all participants at 3:30 p.m.

Recruiters from companies across Kansas, many conducting on-site interviews, will be present. In addition, several community colleges and technical schools will have information about their classes and programs available.

United Wireless Arena is just west of Dodge City and can be accessed from U.S. 50.

Job seekers are encouraged to dress appropriately for interviews and bring several cop-

ies of their resumes. In addition, participants should visit Kansasworks.com prior to attending the job fair for the latest list of companies attending and positions available. The Kansasworks Mobile Center will be on site to help with resume building and career counseling.

Go to Kansasworks.com and click on the "Job Fairs" link and then click the "Western Kansas" link for information or call (877) 509-6757.

USE THE CLASSIFIEDS! 785-462-3963

This could be the **Opportunity** You've been waiting for...

The Colby Free Press is looking for a **FULL TIME ADVERTISING EXECUTIVE** to join our team selling advertising for Nor'West Newspapers. The work week would be 40 hours with occasional evening and weekend duties. Computer skills with Excel, Photoshop, InDesign, and Acrobat helpful but not required. Must have good communication skills, excellent customer service skills with attention to detail, and enjoy a fast paced atmosphere.

Send a letter and resume to Sharon Friedlander, Publisher, at 155 W. Fifth St., Colby, Kan., 67701, sfriedlander@nwkansas.com or apply in person. **No calls please.**



Public Notice

CITY TREASURER'S QUARTERLY FINANCIAL STATEMENT FOR THE PERIOD FROM JANUARY 1, 2012 TO MARCH 31, 2012

	BEGINNING TREASURY CASH	RECEIPTS	DISBURSEMENTS	ENDING TREASURY CASH
GENERAL	\$1,076,846.43	\$890,258.18	\$574,049.44	\$1,393,055.17
LIGHT	\$2,322,996.87	\$1,281,963.32	\$1,338,788.15	\$2,266,172.04
ELECTRIC UTILITY RESERVE FOR DEPR	\$1,679,953.34	\$0.00	\$0.00	\$1,679,953.34
WATER	\$1,283,401.39	\$224,157.60	\$288,025.09	\$1,219,533.90
WATER UTILITY RESERVE FOR DEPR	\$501,404.57	\$0.00	\$0.00	\$501,404.57
SEWAGE DISPOSAL	\$474,178.12	\$280,792.71	\$394,103.98	\$360,866.85
SOLID WASTE DISPOSAL	\$124,292.74	\$140,161.64	\$154,627.84	\$109,826.54
LIBRARY	\$11,498.98	\$128,016.96	\$137,923.68	\$1,592.26
RECREATION	\$6,916.97	\$76,796.33	\$83,190.19	\$523.11
NOXIOUS WEED	\$17,846.06	\$2,002.85	\$0.00	\$19,848.91
BOND & INTEREST	\$155,796.68	\$375,217.48	\$0.00	\$531,014.16
TOURISM & CONVENTION	\$45,720.24	\$53,298.06	\$98,465.00	\$553.30
EMPLOYEE BENEFITS	\$247,322.24	\$344,995.80	\$303,120.53	\$289,197.51
SPECIAL LAW ENFORCEMENT	\$1,980,976.64	\$2,994.48	\$21,652.54	\$1,962,318.58
SPECIAL FIRE & POLICE	\$55,936.63	\$26,100.73	\$8,587.39	\$73,449.97
SPECIAL LIABILITY	\$11,547.86	\$9,742.42	\$17,634.00	\$3,656.28
SPECIAL PARKS & RECREATION	\$46,328.54	\$8,367.08	\$677.50	\$54,018.12
SPECIAL STREETS	\$496,975.57	\$38,272.80	\$0.00	\$535,248.37
WATER TREATMENT (ACE)	(\$33,558.43)	\$40,874.55	\$47,240.70	(\$39,924.58)
EMBARC CDBG FUNDS	\$0.00	\$0.00	\$0.00	\$0.00
FINANCED PROJECTS	\$513,601.46	\$317,738.38	\$211,551.06	\$619,788.78
BOSSELMAN TIF DISTRICT	\$134,809.64	\$139,241.75	\$24,962.00	\$249,089.39
RISK MANAGEMENT	\$373,523.46	\$91.36	\$383.10	\$373,231.72
PAYROLL	\$16,669.21	\$7,722.13	\$0.00	\$24,391.34
METER DEPOSITS	\$327,863.46	\$0.00	\$1,311.44	\$326,552.02
CAPITAL IMPROVEMENT RESERVE	\$2,854,445.37	\$134,876.95	\$1,817.96	\$2,987,504.36
MUNICIPAL EQUIPMENT RESERVE	\$1,244,321.76	\$81,286.05	\$1,549.49	\$1,324,058.32
FIRE INSURANCE PROCEEDS	\$0.00	\$10,446.72	\$0.00	\$10,446.72
ECONOMIC DEVELOPMENT	\$1,563,777.93	\$137,829.95	\$18,108.36	\$1,683,499.52
E-911 FUNDS	\$5,106.71	\$141,531.13	\$12,047.26	\$134,590.58
TOTALS	\$17,540,500.44	\$4,894,777.41	\$3,739,816.70	\$18,695,461.15
AVAILABLE CASH	\$16,220,461.15	OTHER CASH		
Farmers & Merchants Bank		Cash Drawer	\$300.00	
Peoples State Bank	\$2,475,000.00	Petty Cash Fund	\$4,000.00	
TOTAL AVAILABLE CASH	\$18,695,461.15	TOTAL OTHER CASH	\$4,300.00	
BONDED INDEBTEDNESS				
GENERAL OBLIGATION BONDS/LEASE PURCHASE:				
3.65%	2004 Street Improvement Bonds due serially each year thru 06-01-14			\$185,000.00
3.53%	2005 Street & Airport Improvement Bonds due serially each year thru 12-01-16			\$885,000.00
0.00%	2009 Fire Station Construction Bonds due serially each year thru 5-01-19			\$288,000.00
3.12%	2010 Fire Station, Ball Field Lights & Sewell Avenue Bonds due serially each year thru 12-01-19			\$2,285,000.00
2.35%	2010 Aquatic Center Bonds due serially each year thru 12-01-20			\$4,570,000.00
3.58%	2011 Willow Tax Increment Financing Bonds due serially each year thru 12-01-25			\$1,050,000.00
4.56%	2007 Master Equipment Lease/Purchase due monthly thru 7-30-17			\$159,802.72
	TOTAL GENERAL OBLIGATION BONDS/LEASE PURCHASE			\$9,422,802.72
STATE REVOLVING FUND LOAN:				
2.77%	2006 Water Pollution Control Revolving Fund Loan due semi-annually thru 9-01-27			\$6,811,374.06
INDUSTRIAL/ECONOMIC DEVELOPMENT REVENUE BONDS:				
4.41%	Refunding and Improvement Revenue Bonds - due serially each year thru 08-15-16 (Hospital) K.S.A. 12-1740 et seq.			\$4,065,000.00
7.86%	Industrial Revenue Bonds due serially each year thru 6/25/21 (K. Young, Inc. dba Truck Town) K.S.A. 12-1744C			\$868,420.90
7.75%	Industrial Revenue Bonds - principal due at maturity 12-01-17 (Petro Lube) interest due serially, commencing 12/01/08 K.S.A. 12-1740 et seq.			\$1,600,000.00
	TOTAL INDUSTRIAL/ECONOMIC DEVELOPMENT REVENUE BONDS			\$6,533,420.90

/s/ Jolene A. Olsen

J. Jolene A. Olsen do hereby certify that the above statement is correct