

Baby Blues • Rick Kirkman & Jerry Scott



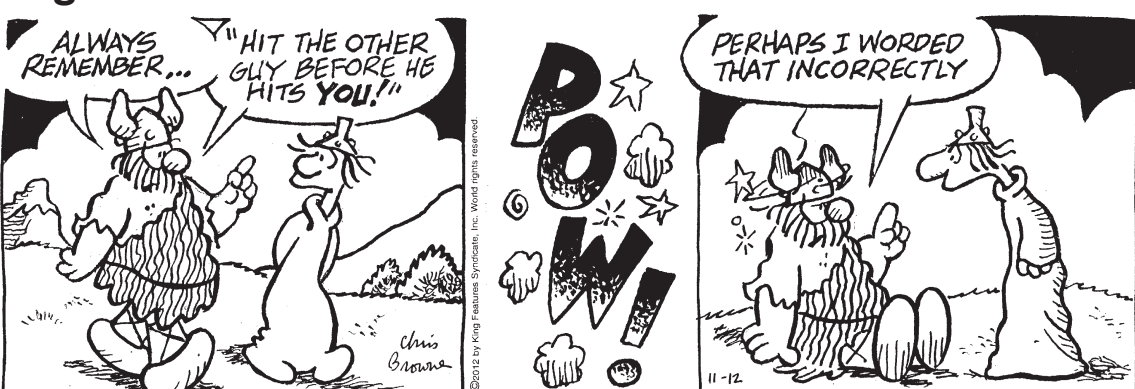
Beetle Bailey • Mort Walker



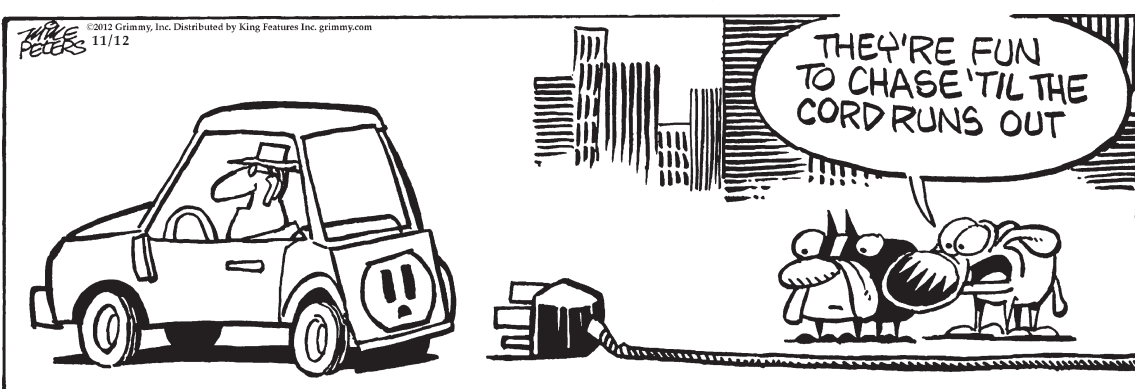
Blondie • Chic Young



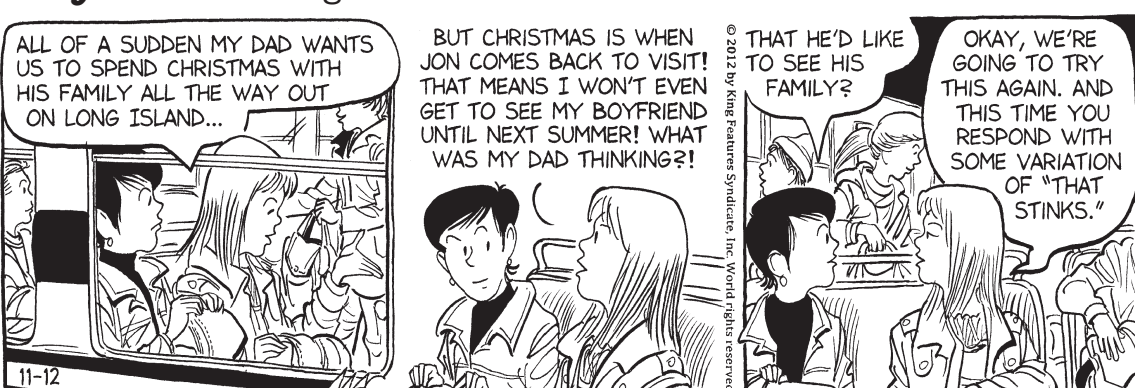
Hagar the Horrible • Chris Browne



Mother Goose and Grimm • Mike Peters



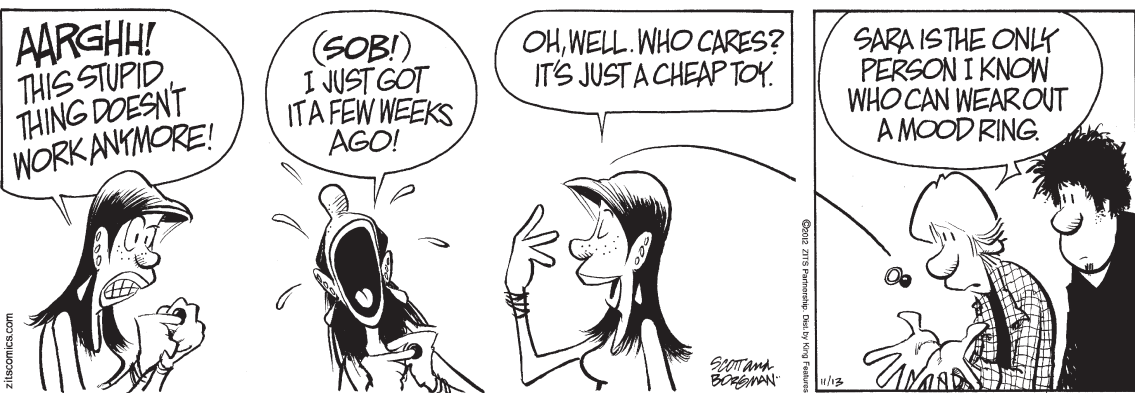
Sally Forth • Greg Howard



Todd the Dinosaur • Patrick Roberts



Zits • Jim Borgman & Jerry Scott



Terry Kovel

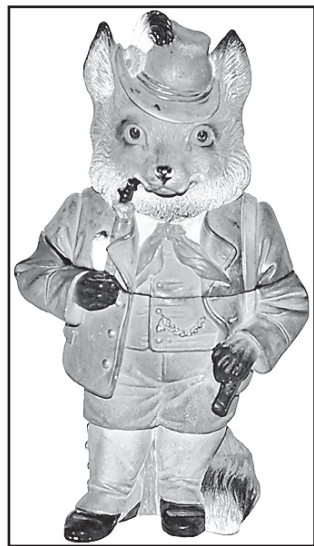
• Antiques and Collecting

Tobacco jars – art and function

The first U.S. Surgeon General warning on tobacco products, in 1964, identified tobacco as bad for your health. Americans were soon using fewer tobacco products, like cigarettes, pipe tobacco, snuff, chewing tobacco and cigars.

In the late Victorian era, use of snuff lost favor, and tobacco was used mainly for pipes. Tobacco is a dried leaf, and it crumbles easily, so it's kept in a container that could be used as a humidor.

By the mid-19th century, many pottery jars were being made in Germany in amusing shapes. Few were made in the U.S. Animals, human heads, historic figures and obvious shapes like barrels were popular. By the 1930s, most potteries were making more-formal and less-colorful jars.



This fox, dressed to go hunting, is a tobacco jar, marked by Jon (Johan) Maresh, who used the mark "JP" on jars made in Germany after 1841. The factory may have used the mark later, too. It closed in about 1945. The jar sold for \$690 at Fox Auctions of Vallejo, Calif.

Collectors search for ornamental examples, especially those made of majolica or another colorful ceramic or by well-known factories.

Tobacco jars range from 6 to 13 inches tall. They sometimes are confused with cookie jars. But a jar-humidor has a section with a hole inside the lid that held a moist sponge. And a tobacco jar lid opens at half the height of the jar. A cookie jar has a lid that opens near the top. Tobacco jars, especially the full figures of a person or animal, sell for \$500 to more than \$1,000. Beware. There are many fakes.

Q: In 1996 I paid \$12 for a 5-inch Donald Duck figurinal mug at an antiques mall, in the shape of Donald's head. The base is blue, the same color as the rim around the top of the mug. It's marked with a copyright symbol and the words "Walt Disney Prods., Japan." I'd like to know the mug's age and value.

A: Walt Disney ceramic dishes were made in Japan before and after World War II, but your mug dates from after the war. The mark dates it anywhere from the 1950s to the 1980s. It would sell today for roughly what you paid for it.

(c) 2012 by Cowles Syndicate Inc.

Bridge • Steve Becker

South dealer.
Both sides vulnerable.

NORTH
♠ A 2
♥ K J 8 7 4
♦ 7 5
♣ 7 6 4 2

WEST
♠ 6 4 3
♥ 3
♦ J 10 8 4 3
♣ J 9 5 3

EAST
♠ 5
♥ A Q 10 9 5 2
♦ 9 6 2
♣ K 10 8

SOUTH
♠ K Q J 10 9 8 7
♥ 6
♦ A K Q
♣ A Q

The bidding:
South West North East
2♣ Pass 2♥ Pass
2♦ Pass 3♦ Pass
4NT Pass 5♦ Pass
6♣

Opening lead — three of hearts.

Famous Hand

Looking at all four hands, it's hard to imagine how South went down one in six spades — yet he did. What's more, almost anyone else in his shoes would also have gone down against the brilliant defense he encountered.

West led a heart, on which declarer made the normal play of the jack from dummy. However, East, Mike Smolen, deviated from the norm by taking the jack with the ace! This extraordinary play, when Smolen could have won the trick with the queen, subsequently brought about South's demise.

Smolen had realized, of course, that his partner's three of hearts was a singleton. But he also realized that establishing dummy's king of hearts as a trick would not help declarer at all, since South would not be able to cash the king without West ruffing. Indeed, the only way declarer could ever score a trick with the king was if he started with eight or more spades. Winning the first trick with the ace was therefore unlikely to cost, but might very well gain.

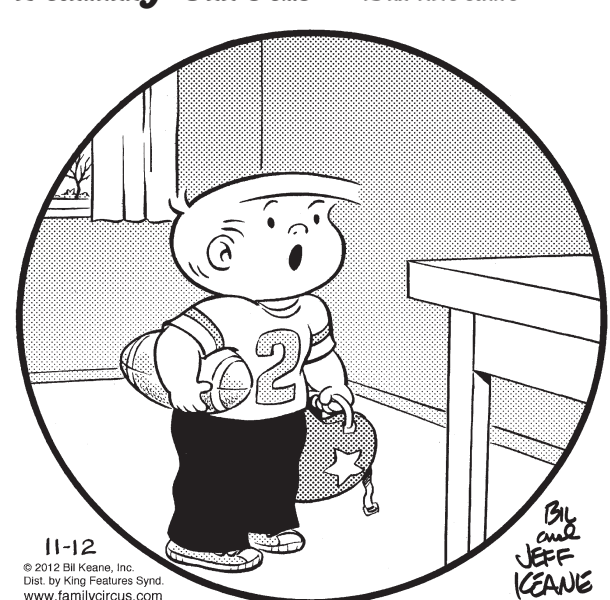
At trick two, Smolen shifted to the eight of clubs. One can hardly blame declarer for putting up the ace rather than playing the queen. From his viewpoint, it seemed foolish to risk a finesse when he could later discard the queen on dummy's king of hearts.

Accordingly, after taking the ace of clubs, declarer cashed the K-A of trumps, then played the heart king and discarded the queen of clubs on it. West unexpectedly ruffed, and poor South went down one.

Now let's suppose East had won the jack of hearts with the queen. In that case, South would surely have made the slam regardless of what East did next. If East returned a low heart, declarer would ruff and sooner or later take a club finesse to make the slam. He would also make the slam after a club return at trick two, because he would have no other choice than to finesse.

(c)2012 King Features Syndicate Inc.

Family Circus • Bil Keane



© 2012 Bil Keane, Inc. Dist. by King Features Synd. www.familycircus.com

Conceptis Sudoku • Dave Green

	6							2	
9									1
2		8	5		3	6			7
4				2					9
7	1			4				8	5
5				6					3
6		2	8		7	1			4
1									2
	7							5	

Difficulty Level ★ 11/12

This is a logic-based number placement puzzle. The goal is to enter a number, 1-9, in each cell in which each row, column and 3x3 region must contain only one instance of each numeral. The solution to the last Sudoku puzzle is at right.

3	1	6	2	4	5	9	8	7
9	2	8	1	7	3	5	4	6
4	5	7	9	6	8	3	2	1
8	6	3	4	1	7	2	5	9
7	4	5	3	9	2	1	6	8
1	9	2	8	5	6	7	3	4
5	8	9	6	3	1	4	7	2
6	3	4	7	2	9	8	1	5
2	7	1	5	8	4	6	9	3

Cryptoquip

LDPJM ERDBS E UQEHMJS-
SDLJX ZJHHJS'U HJMESWPJ
SGES WU RHEPJ: "SGJ
HJX REXFJH DZ QDBHEFJ."

Yesterday's Cryptoquip: SINCE THOSE NEW HEALING DRUGS WERE FORMULATED ON A RANCH, I WOULD CALL THEM FARM-ACEUTICALS.

Today's Cryptoquip Clue: S equals T

Crossword • Eugene Sheffer

ACROSS
1 Listen to part
5 Aries symbol
8 Clenched hand
12 Part of the foot
13 Clean air org.
14 Division word
15 Stead
16 One walking proudly
18 Mathematician famed for his "last theorem"
20 Lacking vigor
21 Pesky kid
23 "— Town"
24 Criminal in tent?
28 Jump
31 Huge star
32 Mideast nation
34 Hot tub
35 Candle string
37 Go everywhere, as spilled liquid

DOWN
1 50 percent
2 Great Lake
3 Computer brand
4 Ballroom dance (Var.)
5 Paraphrases
6 Suitable
7 Filly's mom
8 Irregular or cod
10 Don't delete
11 Ripped
17 Venusian vessel?
19 Bohemian
22 Dangle a carrot
24 Away from NNE
25 On the — vive
26 Removes the cover
27 Brushes up on
29 Gorilla
30 Standard
33 Indian flat bread
36 Put the — on (stop)
38 Clan-related
40 Household pooch, e.g.
42 "Yeah, right!"
43 Sandwich shop
44 Goblet feature
46 Double agent
47 Commotions
48 Caustic solutions
50 Always, to a bard

Saturday's answer 11-12

1	2	3	4	5	6	7	8	9	10	11		
12				13				14				
15				16				17				
18				19				20				
				21				22				
24	25	26					27		28	29	30	
31				32				33		34		
35				36				37		38		
				39				40		41		
42	43			44				45		46	47	48
49								50				51
52								53				54
55								56				57