

\$125,000
For 125 years!!
To Celebrate 125 years of community support, F & M Bank has donated over **\$125,000** in 2012 back to our community.



Farmers & Merchants Bank of Colby

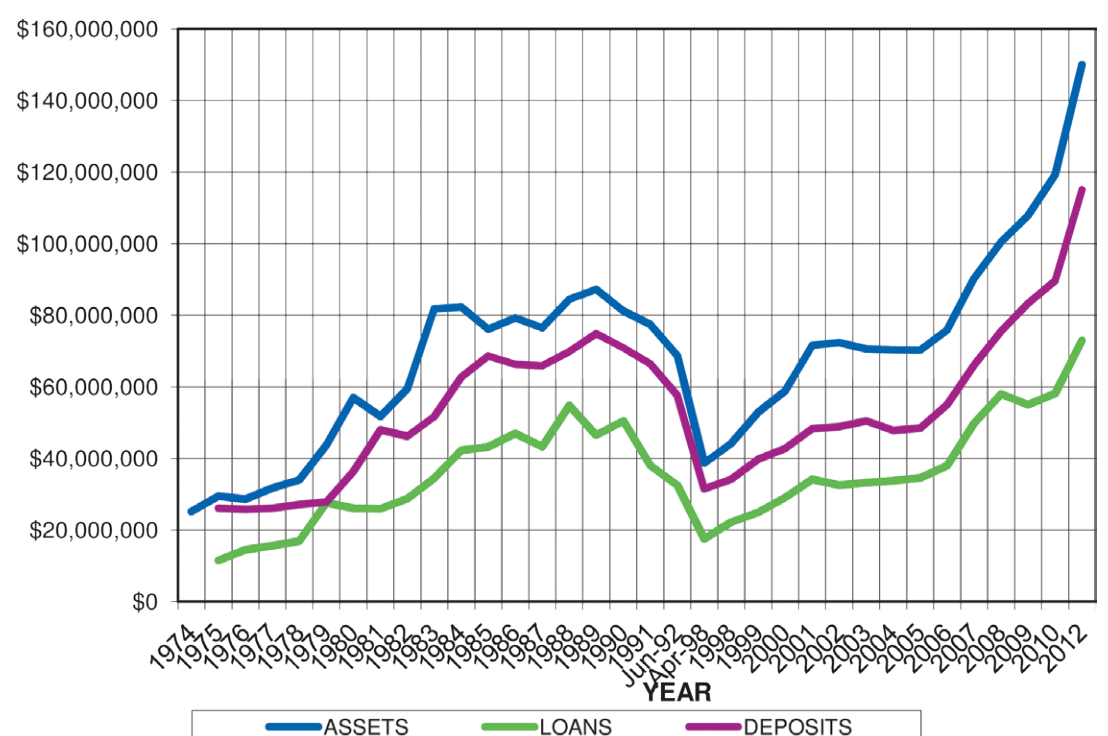
"Your Community Bank"

As Colby's only locally chartered bank, we understand the importance of giving back to the community and keeping our money local. We encourage everyone to shop and do business in our community, to help keep it strong and vibrant. We want to thank you for all your support and business over the last 125 years, and we look forward to working with you in the future.

We truly do have our roots where other banks only have their branches! If you are not already part of the F&M's banking family, we invite you to find out all the benefits of banking with a community bank. We look forward to serving you in 2013!



F&M Historical Data



THE POOL PARK PROJECT IS ALMOST COMPLETE!

Thank YOU to those who have donated \$2,500 or more!!

- City of Colby
- Farmers & Merchants Bank of Colby
- Lou Hines
- Western Sprinklers
- Mike Woofter-Woofter Construction
- Wiedeman Beautification Fund
- Gary & Elfreide Cooper
- Pete Henry Foundation
- Tubbs & Sons Ford
- Jim & Kathleen Tubbs
- American Implement
- Insurance Planning, Inc.
- Audrey Hines
- H & H Farms

An estimated 200+ hours were spent constructing the playground so far.

THANK YOU to those who volunteered their time.

- | | |
|--------------------------|-------------------|
| •City of Colby Employees | •Mitch Kane |
| •Thomas County Employees | •Jim Tubbs |
| •Kevin Kriss | •Shawn Siruta |
| •Jeremy Quint | •Patrick Toth |
| •Brent Wiedeman | •Jim Vap |
| •Mike Woofter | •Quinnlyn Woofter |
| •Mark Hemmert | •Lennie Riedel |
| | •Brandon Cavanee |

We hope to have the park complete by Spring 2013, but we still need your help! We need to raise another \$35,000! If you are interested in donating, please contact Brent Wiedeman at F&M Bank or Mike Woofter at Woofter Construction.



**Farmers & Merchants
Bank of Colby**