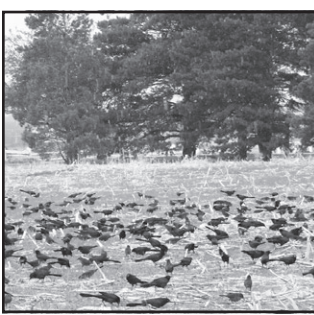


Weather



National Weather Service Tonight: Partly cloudy, with a low around 17. Light and variable wind becoming west 5 to 10 mph after midnight.

Tuesday: Mostly sunny, with a high near 48. West wind around 10 mph.

Tuesday Night: Mostly clear, with a low around 20. West wind 5 to 10 mph.

Wednesday: Mostly sunny, with a high near 50. West wind 5 to 10 mph becoming south in the afternoon.

Wednesday Night: Partly cloudy, with a low around 29.

Thursday: Partly sunny, with a high near 44.

Thursday Night: Partly cloudy, with a low around 27.

Friday: A 20 percent chance of rain. Mostly cloudy, with a high near 40.

Friday Night: A 30 percent chance of snow. Mostly cloudy, with a low around 16.

Saturday: A 20 percent chance of snow. Partly sunny, with a high near 26.

Saturday Night: Partly cloudy, with a low around 9.

Sunday: Sunny, with a high near 30.

Friday: High, 39; Low 8 Saturday: High, 39; Low 9 Sunday: High, 42; Low 12

Precip: Friday None Saturday None Sunday None

Month: 0.10 inches Year: 0.10 inches Normal: 0.42 inches

(K-State Experiment Station)

Sunrise and Sunset Tuesday 8:04 a.m. 5:38 p.m. Moon: waning, 13 percent

Wednesday 8:04 a.m. 5:39 p.m. Moon: waning, 6 percent (U.S. Naval Observatory)

Massage therapists need licenses

From "MASSAGE," Page 1

years, several prostitution rings using massage parlors as a front have been busted in Wichita, she said.

"As it stands, there's no license to take away," Harper said. "It gives law enforcement another tool. Especially out here where we don't all have the resources to protect our citizens."

Most other states recognize licenses issued in other states, she said, and would be able to bar someone from practicing were they to have their Kansas license taken away.

Harper said the law would also protect the public, as untrained massage therapists can hurt people.

Licensing also opens up an avenue for payment for massage

services through insurance, she said.

It might be difficult to get a bill passed in a year when the Legislature is concerned about money, she said, and there has been criticism that the association is trying to run people out of business.

The grandfathering clause is liberal, she said, and the continuing education hours are easy

to come by online or at community colleges.

"We're not trying to alienate anyone or take people's jobs away," she said. "We're following the standard set by other states."

Harper encouraged people to speak to their senator or representative about the bill, and said anyone with questions can call her at (785) 821-4442.

Gem woman appointed to state council

From "COUNCIL," Page 1

of session. While learning about how the state's legislative body works, silver-haired legislators also debate issues and advocate for elderly.

Members helped to get the "grandparents as parents" bill - which lets people become guardians for their grandchildren - passed by the Legislature in 2011, and are working

to help with a bill to give the elderly better access to dental care.

"I'm just eager to see what needed and try to provide whatever I can do," Hopper said of her new job.

She say she thinks Gem needs more housing and she believes in keeping people out of nursing homes.

Born in Oklahoma City, Hopper said she moved to Gem in 1957 after going to Salina

High School. She worked for two years at the Thomas County Extension office and married Audy Hopper, a farmer, in 1959. He died in 2001.

After her marriage, she was a farmer, substitute teacher and mother of two kids. Her son George Hopper lives Topeka with his wife Cynthia, while her daughter Heather Franklin lives in Salina with her husband Howard.

Billions spent on enforcing immigration

By Alicia A. Caldwell The Associated Press

WASHINGTON - The Obama administration spent more money on immigration enforcement in the last fiscal year than all other federal law enforcement agencies combined, according to a report on the government's enforcement efforts from a Washington think tank.

The report today from the Migration Policy Institute, a nonpartisan group focused on global immigration issues, said in the 2012 budget year that ended in September the government spent about \$18 billion on immigration enforcement programs run by Immigration and Customs Enforcement, the US-Visit program, and Customs and Border Protection, which includes the Border Patrol. Immigration enforcement topped the combined budgets of the FBI; Bureau of Alcohol, Tobacco, Firearms and Explosives; Drug Enforcement Administra-

tion and U.S. Secret Service by about \$3.6 billion dollars, the report's authors said.

Since then-President Ronald Reagan signed the Immigration Reform and Control Act in 1986 - which legalized more than 3 million illegal immigrants and overhauled immigration laws - the government has spent more than \$187 billion on immigration enforcement. According to the report, "Immigration Enforcement in the United States: The Rise of a Formidable Machinery," federal immigration-related criminal prosecutions also outnumber cases generated by the Justice Department.

The 182-page report concludes that the Obama administration has made immigration its highest law enforcement priority. Critics are likely to bristle over its findings, especially those who have accused the administration of being soft on immigration violators.

"Today, immigration enforcement can be seen as the federal

government's highest criminal law enforcement priority, judged on the basis of budget allocations, enforcement actions and case volumes," institute Senior Fellow Doris Meissner, a co-author of the report, said in a statement released with the report today.

The report by the institute's Meissner, Muzaffar Chishti, Donald Kerwin and Clair Bergeron, comes amid renewed interest in immigration reform from Congress and the White House.

In the immediate aftermath of the November election, congressional Republicans suggested the time was right to begin reform talks anew. President Barack Obama, who won a record share of Hispanic voters, renewed a previous pledge to make immigration reform a priority.

In the lead up to the election, Obama made several administrative changes to the immigration system, including launching a program to allow some young

illegal immigrants to avoid deportation and work legally in the country for up to two years. His administration also refocused enforcement efforts to target criminal immigrants and those who posed a security threat. And just last week, the administration announced a rule change to allow some illegal immigrant spouses and children of U.S. citizens to stay in the country while they ask the government to waive 3- or 10-year bans on returning to the United States. Immigrants who win the waiver will still need to leave the country to complete visa paperwork, but will be able to leave without fear of being barred from returning to their families for up to a decade. The rule, first proposed last year, goes into effect in March.

Republican lawmakers have widely criticized the policy changes, routinely describing them as "backdoor amnesty." Many of those same lawmakers have said the border needs to be

Effort to bring Amtrak service to Wichita moves forward

WICHITA (AP) - Kansas transportation officials and Wichita city officials are backing a city council member's push to persuade Amtrak to expand passenger rail service to the city.

Officials from the Kansas Department of Transportation, Amtrak and the Federal Railroad Administration have said an initial planning study for the expanded service through Wichita was "a good first step that gets us in the game," said council member Pete Meitner, who started the effort nine months ago.

Meitner wants the Amtrak passenger route that runs from Fort Worth to Oklahoma City, called the Heartland Express,

to stop in Wichita. It also could expand to Kansas City, *The Wichita Eagle* (bit.ly/108gNUJ) reported Sunday.

The Wichita City Council is supporting Meitner by making money for more passenger rail studies a lobbying priority in the legislative session that begins Monday.

Wichita commercial developer Gary Oborny, who has a letter of intent to buy Union Station, said he would include a rail terminal if his development proposal is accepted by the station's current owner, Cox Communications.

Oborny said the Wichita Metro Chamber believes enhanced rail service would

help efforts to bring commerce - and visitors - to downtown Wichita.

Kansas Transportation Secretary Mike King and his governmental affairs chief, Lindsay Douglas, are talking to Oklahoma officials, who are currently more interested in a more northeast route for the Heartland Flyer toward Tulsa than the Wichita stop, Douglas said.

"They are interested in offering new service, but the towns north of Oklahoma City along the Heartland line are interested in service there, too," she said.

Douglas said the next step is an environmental study, which would cost Kansas \$3 million and Oklahoma \$2.3 million

if no federal assistance is obtained.

A planned regional passenger rail workshop with the Federal Railroad Administration will show the federal government that Kansas and Oklahoma are serious enough about passenger rail to need federal funds, Douglas said.

The biggest hurdles could be Gov. Sam Brownback's budget proposal, which will be released on Jan. 16, and the willingness of the federal government to provide grant money, Douglas said.

The latest project estimates, from 2011, are a little more than \$87 million to run from Newton into Texas, although that number changes frequently.

Briefly

Seniors plan potluck at Presbyterian Church

The group More Fun Together plans a potluck for people 50 or older who are alone, widowed, divorced, separated or who have partners in nursing homes at 6 p.m. Tuesday at the First Presbyterian Church. The group will also get together on Tuesday, Feb. 12. Bring a dish to share; table service and beverage will be provided. For information, call 462-6342.

Wellness Challenge will help people with health

The eight-week Thomas County Wellness Challenge encourages increased exercise and better eating habits to promote a healthy lifestyles and lower weight. To register, go to the "Wellness Challenge" tab at www.thomascounty-wellness.org or the Thomas County Health Department, 350 S. Range. To participate in the free blood work, you must register by Tuesday. Otherwise, registration is due next Monday. For information, call Kasiah Rothchild at 460-4596 or Diann Gerstner at 460-4582.

Hospital offering cut-rate health check

Citizens Medical Center, working with the Thomas County Healthy Communities Coalition, will offer health screenings in the specialty clinic lobby from 6 to 9 a.m. Wednesday through Saturday. Screenings include a blood profile for \$30 (lipid profile, glucose and complete blood count; requires a 10- to 12-hour fast), thyroid for \$20, Hgb A1C (glucose) for \$20, prostate screening for \$25, electrocardiogram for \$35 and lung check, free. For questions, call Jeanene Brown at 460-4850.

'Kids a Cookin' classes continue this month

Spring sessions of Kids-a-Cookin', a hands-on food preparation and nutrition class for third through fifth graders, continue Thursdays this week, Feb. 14, March 21 and April 11. Sessions will start right after school, about 3:45 p.m., at the Colby Community Building, sponsored by Thomas County Extension. Classes are taught by K-State Research and Extension agents Karen Jones and Diann Gerstner. Sign up by calling the Colby Recreation Department, 460-4440.

Want a free lunch?

Go to church Saturday

The Once a Month Lunch will be served from 11:30 to 12:30 Saturday at the First Presbyterian Church, 515 W. Fourth St. in Colby. This free meal is served the second Saturday of each month. For questions, call the church office at 462-6342.

Hospital plans classes for expectant mothers

Citizens Medical Center will offer four weeks of childbirth classes from 7 to 10 p.m. Thursdays starting this week. Women due to deliver before May should attend with their labor support partner. For information or to register, call Jeanene Brown at the hospital's Education Department, 460-4850.

LOCAL TV Listings Sponsored by the COLBY FREE PRESS

Table with columns for Tuesday Evening January 8, 2013, listing various TV channels and their programming from 7:00 to 11:30 PM.



Wednesday Evening January 9, 2013

Table with columns for Wednesday Evening January 9, 2013, listing various TV channels and their programming from 7:00 to 11:30 PM.

We Celebrate Hometown Life

Table with columns for American Profile, listing stories from hometowns just like yours, with categories like HIST, LIFE, MTV, NICK, SCI, SPIKE, TBS, TCM, TLC, TNT, TOON, TRAV, TV LAND, USA, VH1, WGN, Premium Channels, and SHOW.