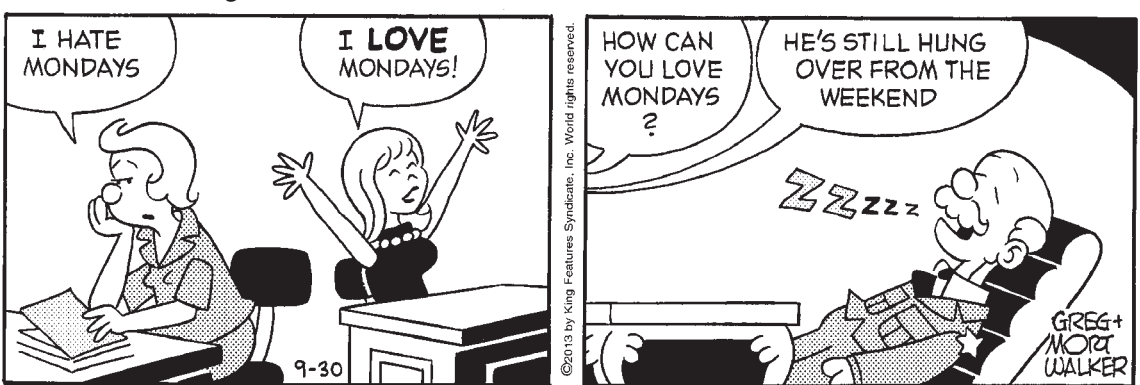


**Baby Blues** • Rick Kirkman & Jerry Scott



**Beetle Bailey** • Mort Walker



**Blondie** • Chic Young



**Hagar the Horrible** • Chris Browne



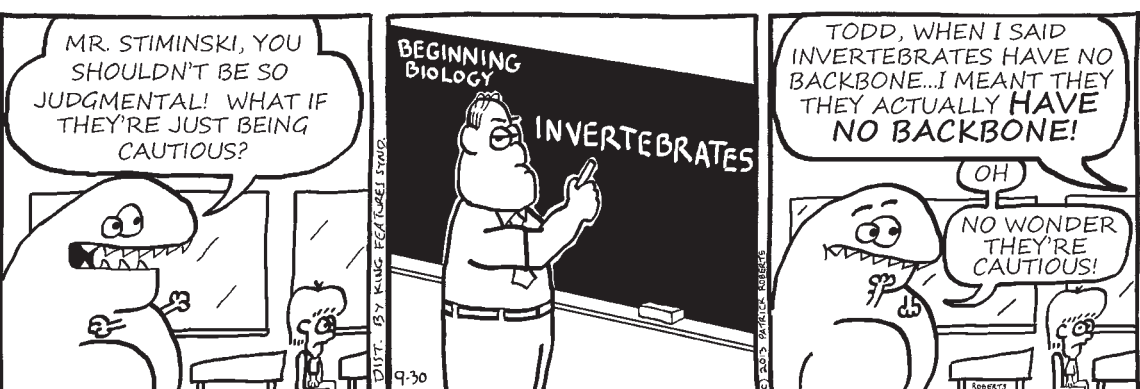
**Mother Goose and Grimm** • Mike Peters



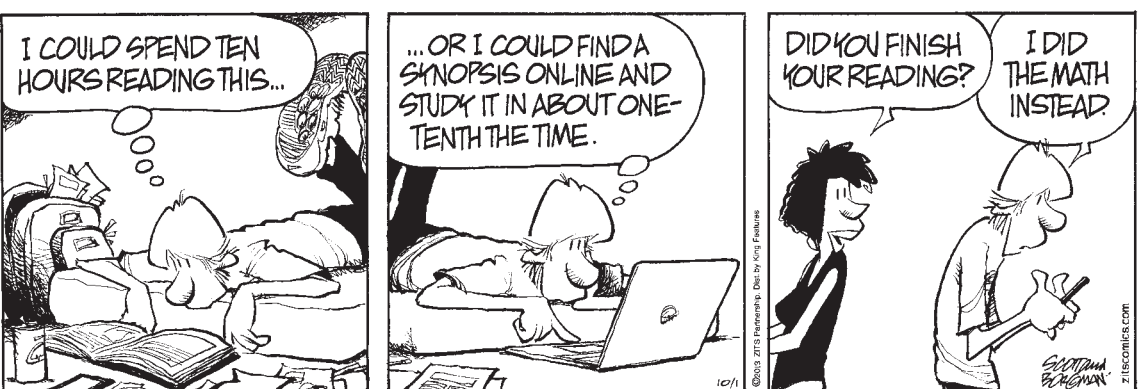
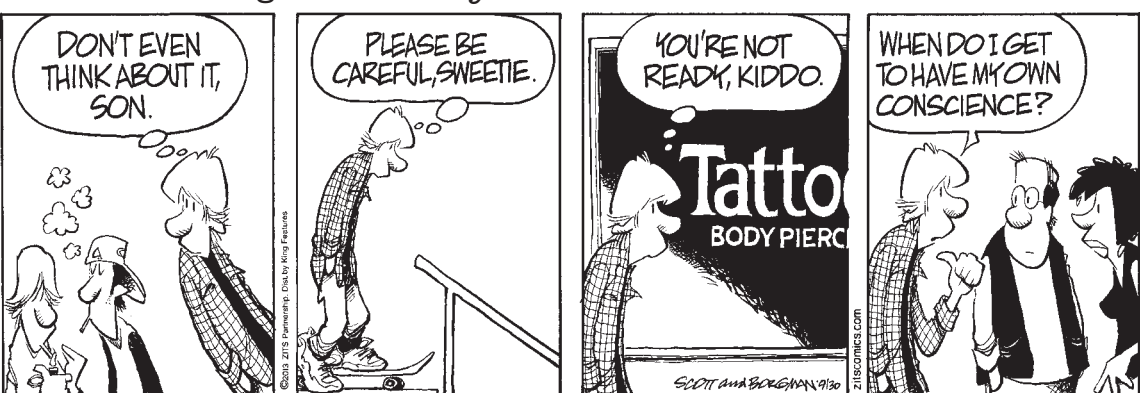
**Sally Forth** • Greg Howard



**Todd the Dinosaur** • Patrick Roberts



**Zits** • Jim Borgman & Jerry Scott

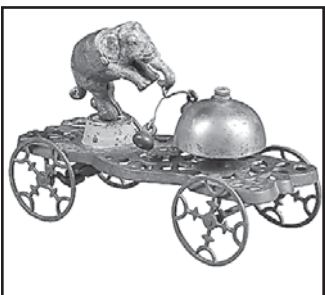


**Terry Kovel**

• Antiques and Collecting

**Old toys draw interest today**

Old toys are very different from those made today. Toymakers of long ago did not try to encourage creativity. A toy was made to resemble a known part of life — a house, car or pet — or perhaps a fantasy — a rocketship or robot. Or they were puzzles meant to teach the alphabet or arithmetic, or character dolls from stories that told of good behavior or gave lessons from the Bible.



An elephant that could ring a bell was the feature of this antique toy. The clever toy, rare and entertaining but with minor paint loss, sold for \$1,230 at auction last fall.

The "Trick Elephant Bell Ringer," with its name in raised letters on the side, was made by the Gong Bell Manufacturing Co. of East Hampton, Conn. When the toy was pulled, the wheels moved and the elephant turned and hit the bell. The elephant stands on a pierced and painted platform, suggesting that he is a circus performer. The painted iron toy, about 5 inches high and 8 inches long, sold for \$1,230 at a Skinner auction in Boston.

**Q:** My wife bought what our family refers to as "our dog chair" at a garage sale for \$9. It was in great disrepair and we had it professionally redone. It's made of walnut, upholstered in leather, and has carved dog's heads at the end of each arm. The dogs' faces and collars are slightly different from one another. We were told one is a female and the other male. I'm not sure if that makes sense. What can you tell me about this chair?

**A:** Chairs with arms that end in animal heads were popular in Victorian times and later. Dog heads are the ones most often found. Your chair is unusual because the heads are slightly different, but whether or not they represent a male and female dog is something only the maker would know. It's not possible to give an accurate value for your chair since the maker and age are unknown, but you can be sure that your wife got a good value for \$9 and an interesting conversation piece after it was refurbished. Value: about \$200. (c) 2013 by Cowles Syndicate Inc.

**Bridge** • Steve Becker

South dealer.  
East-West vulnerable.

**NORTH**  
♦ 9 5 4  
♥ Q 10 7 4  
♦ A Q 10 9 4  
♠ 5

**WEST**  
♦ A K J 10  
♥ K 6 5  
♦ K 7 5 3  
♣ 10 6

**EAST**  
♦ 6 3 2  
♥ 9 8 3 2  
♦ 8 2  
♣ J 8 4 3

**SOUTH**  
♦ Q 8 7  
♥ A J  
♦ J 6  
♣ A K Q 9 7 2

The bidding:  
South West North East  
1 ♠ Pass 2 ♦ Pass  
3 ♣ Pass 3 ♥ Pass  
3 NT

Opening lead — ace of spades.

**Famous Hand**  
This deal occurred during the 1979 world championship match between Taiwan and Australia. It illustrates how artificial bidding methods can sometimes unpredictably affect the outcome of a hand.

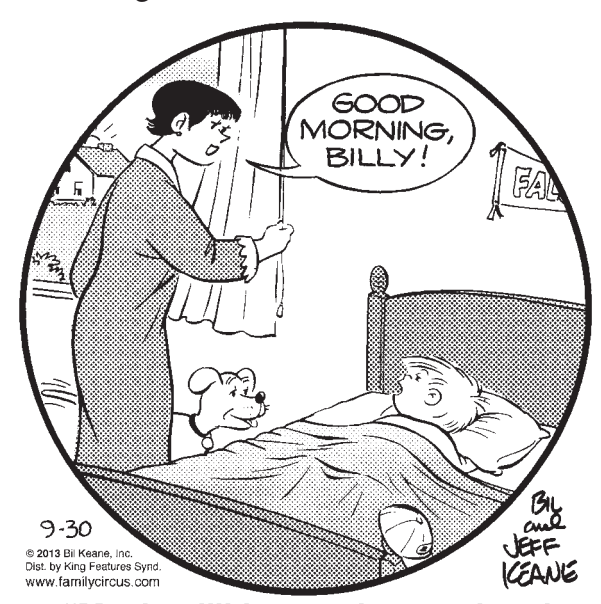
At the first table, where Taiwan was North-South, the bidding went as shown. South's one-club bid was artificial and guaranteed at least 16 high-card points (it was coincidental that South happened to have a club suit). North's two-diamond response indicated a diamond suit and at least eight high-card points (one diamond would have shown a poor hand). The bidding thereafter was natural, and South wound up in three notrump.

The Australian West led the spade ace and shifted to the seven of diamonds. Declarer did not relish the prospect of losing a diamond finesse to East and getting a spade return, so he went up with the ace and led a low heart to the jack. South was hoping to win the heart finesse and then run six club tricks, but West won the heart with the king, cashed the king of diamonds and exited with a heart, and South eventually went down two.

At the second table, after the Australian South bid one club (natural), West made a normal take-out double. North bid two diamonds, and South jumped to three notrump. The Taiwanese West also led the spade ace and shifted to a diamond. But at this table declarer was virtually certain that West had both red kings for his double and that the clubs were unlikely to break 3-3. So South won the diamond with dummy's nine and played the A-J of hearts.

West ducked the heart jack, but South cashed the A-K-Q of clubs, led the diamond jack to dummy's queen and cashed the ace of diamonds to bring himself to eight tricks. He then led the queen of hearts, forcing West to win and yield the game-going trick to South's queen of spades. (c)2013 King Features Syndicate Inc.

**Family Circus** • Bil Keane



**Conceptis Sudoku** • Dave Green

		1	9		7	3		
		9		4		2		
3	6							5 9
9			6		4			5
	1							4
7			8		1			3
2	8							3 4
		3		6		7		
		4	2		8	1		

Difficulty Level ★ 9/30

This is a logic-based number placement puzzle. The goal is to enter a number, 1-9, in each cell in which each row, column and 3x3 region must contain only one instance of each numeral. The solution to the last Sudoku puzzle is at right.

9	2	3	5	1	6	8	7	4
1	8	5	7	4	9	3	6	2
7	4	6	3	8	2	1	9	5
2	9	7	1	5	4	6	8	3
5	1	8	6	9	3	2	4	7
6	3	4	8	2	7	9	5	1
8	7	2	4	6	1	5	3	9
3	6	9	2	7	5	4	1	8
4	5	1	9	3	8	7	2	6

**Cryptoquip**

ZAUFMQ FX YASOE ZNOU XA  
KXAU ZFK KXSHHAIM BASQZ,  
XZN CNBZTMFBTO CTM  
EAYMNE KACN IAHA-XSKKFM.

Yesterday's Cryptoquip: THAT OLD DOG IS ALWAYS STARING BLANKLY AT THINGS. I THINK HE'S PROBABLY A GAWKER SPANIEL.

Today's Cryptoquip Clue: X equals T

**Crossword** • Eugene Sheffer

**ACROSS**  
1 Moon-shine container  
4 Castle or Cara  
9 More, to Manuela  
12 Parisian pal  
13 Little devil  
14 Brewery product  
15 Dummy  
17 "Smoking or —?"  
18 — de cologne  
19 Started a garden  
21 Patronize a casino  
24 "Divine Secrets of the — Sisterhood"  
25 Carte lead-in  
26 Bygone flier  
28 Dissuade  
31 — It Romantic?"  
33 Male turkey

**DOWN**  
35 Angry  
36 Cross-legged position  
38 Thee  
40 Genetic matter  
41 On the rocks  
43 Still the natural color  
45 Broadway angel, e.g.  
47 Pair  
48 Past  
49 1979 Woody Allen movie  
54 "Ben- —"  
55 Eastern potato (Var.)

**16 Kan. borderer**  
**20 Spud's buds**  
**21 1990s Olympic track star**  
**1 Toast**  
**2 Actress**  
**3 Card player's call**  
**4 Paragons**  
**5 Ask**  
**6 Ostrich's cousin**  
**7 Loud**  
**8 Group of nine**  
**9 Required**  
**10 Burn soother**  
**11 Transmit**  
**22 Addition-ally**  
**23 Man/lion/dragon mix**  
**27 Plaything**  
**29 Sea eagle**  
**30 Peruse**  
**32 Nip**  
**34 Lip-synched**  
**37 Appeared to be**  
**39 Headless**  
**42 College major**  
**44 I topper**  
**45 Scrooge's outcries**  
**46 Chills**  
**and fever**  
**50 Homer's neighbor**  
**51 — Mahala**  
**52 Oklahoma city**  
**53 Present**

A	P	T	B	U	S	F	A	S	T	S
D	O	H	A	S	H	I	G	L	O	O
I	R	E	W	H	O	A	R	E	V	O
O	C	T	L	E	V	I	S			
S	H	A	O	R	E	D	T	E	N	T
			A	D	S	S	P	O	T	O
A	M	A	T	I	S	A	P	A	R	T
S	A	L	A	D	S	S	P	A		
S	T	I	R	H	U	E	Z	O	L	A
W	H	E	R	E	W	A	S	I	A	P
E	L	V	I	S	S	A	D	T	E	A
I	N	E	P	T	E	W	E	E	L	M

Saturday's answer 9-30

1	2	3	4	5	6	7	8	9	10	11
12			13						14	
15			16						17	
			18				19		20	
21	22	23					24			
25			26			27	28		29	30
31			32			33	34		35	
36			37			38	39		40	
			41			42	43		44	
45	46						47			
48			49			50			51	52
54			55						56	
57			58						59	