

Classifieds

To place your classified ad, mail (155 W. Fifth), fax (785-462-7749), phone (785-462-3963), or stop by our office at 155 W. Fifth

Services

Need Fencing? Can tear out, build, and repair pasture fences and corrals. Call 970-554-1613. ---9/20---10/17---

Do you have weeds every year? Want a great looking yard? Call JM Tree & Lawn Service to fill ALL of your needs this year. We offer full tree care and sprinkler system maintenance/installs as well. Call today to get a free quote. 785-462-6908. ---5/13---TFN---

Have a leaking roof and need it repaired? Look no further. Murray Roofing & Construction, LLC will give you a free estimate and roof inspection. We specialize in residential and commercial roofing systems. Call our office to schedule an inspection. 785-462-6908. ---3/11---TFN---

Services

Do Your Feet Hurt? We can help with I-Step Technology. We also provide medicare approved diabetic shoes up to size 15 with doctors prescription by appointment only. Currier Drug, Inc, Atwood. 1-800-696-3214. ---4/22---TFN---

Give Away

Kittens born July 15 - Free to permanent, non-abusive home. Call 785-386-4437. ---9/18---10/14---

Garage Sales

165 S. Chick - Friday, Oct. 11, 1 - 7 p.m., Saturday, Oct. 12, 8 a.m. - 4 p.m. Portable whirlpool dishwasher, matching kenmore washer & dryer, furniture, misc., cash only. ---10/2---10/11---

Garage Sales

Hale's Yard Sale 1045 W. 4th St. - Saturday, 9 a.m. - ?? ---10/10---10/11---

325 N. Chickamauga (East of F&M Bank) - Friday, Oct. 11, 1 - 6 p.m., Saturday, Oct. 12, 8 a.m. - noon. Furniture, tools, pickup tool box (like new), trucker CB radio, antiques, classic comic books, 1945-46 Life magazines, cast iron pots and skillets, glass rolling pins, old lanterns, and many more misc. items. ---10/7---10/11---

Public Notice

Request for Bid

The Thomas County Landfill is requesting bids on Two Rotary Cutters. Bid specifications may be picked up at the Thomas County Clerks Office. Sealed bids will be opened Monday, October 21st at 9:00a.m. during the regular Thomas County Commission meeting, 300 North Court Avenue Colby, Ks. For more information, please call 785-462-8139

(Published in the Colby Free Press on October 10, 11, 14, 16, 17, 2013)

Kansas Classified Network

Adoption
WARM, FUN, PROFESSIONAL Couple Eager To Provide Your Child Love And Happiness Forever. Expenses Paid. Ann and Peter. Call 1-800-593-1730 annpeter102@gmail.com or go to www.annandpeter.info.

Help Wanted
"Partners In Excellence" OTR Drivers APU Equipped Pre-Pass EZ-pass passenger policy. 2012 & Newer equipment. 100% NO touch. Butler Transport 1-800-528-7825

Kansas Classified Network

Help Wanted/Truck Driver
Drivers: CDL-A. Train and work for us! Professional, focused CDL training available. Choose Company Driver, Owner Operator, Lease Operator or Lease Trainer. (877) 369-7885 www. CentralTruckingDrivingJobs.com

Help Wanted/Truck Driver
Exp. Flatbed Drivers: Regional opportunities now open with plenty of freight & great pay! 800-277-0212 or primeinc.com

Kansas Classified Network

Help Wanted/Truck Driver
DRIVERS: Transport America has Dedicated and Regional openings! Variety of home time options; good miles & earnings. Enjoy Transport America's great driver experience! TAdriers.com or 866-204-0648.



CEMENTING OPERATOR AND DRIVER POSITION

Consolidated Oil Well Services has served the Mid-Continent region and the Rocky Mountains since 1956, providing all types of cementing, acidizing and fracturing.

Consolidated Oil Well Services is looking to fill Equipment Operator/Driver positions in Oakley, Kansas immediately. This is an hourly position, paying \$15.00/hour and up, depending on relevant experience.

Candidates must meet the following requirements:

- A good driving record
- Class A CDL
- High School Diploma or GED

The position offers the following benefits:

- 7 days on-2 days off/7-27-3 Schedule
- Health, Vision, and Dental Benefits
- 4% Matching on 401K

If you are interested, please send your résumé to kkoslosky@cows.bz or fax to 307-686-4917. For more information visit our website consolidatedows.com.

Public Notice

Request for Bid

The Thomas County Landfill is requesting bids on a new pickup. Bid specifications may be picked up at the Thomas County Clerks Office. Sealed bids will be opened Monday, October 14th at 9:00a.m. during the regular Thomas County Commission meeting, 300 North Court Avenue Colby, Ks. For more information, please call 785-462-8139

(Published in the Colby Free Press on October 4, 7, 9, 10, 11, 2013)

Public Notice

Request for Bid

The Thomas County Landfill is requesting bids on a new Mower Tractor. Bid specifications may be picked up at the Thomas County Clerks Office. Sealed bids will be opened Monday, October 14th at 9:00a.m. during the regular Thomas County Commission meeting, 300 North Court Avenue Colby, Ks. For more information, please call 785-462-8139

(Published in the Colby Free Press on October 4, 7, 9, 10, 11, 2013)

Real Estate



Stock Realty and Auction Company Wants to be Your Real Estate Company. Molly J. Oliver and Kevin M. Barnett Want to Go to Work for YOU!



Molly J. Oliver - 462-5203
Kevin Barnett - 443-1722



Beautifully restored traditional home. Sure to steal your heart. Call Molly for private showing 462-5203



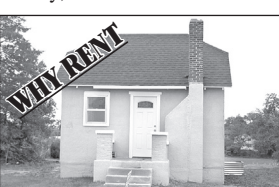
Great value... great home! Five bedroom, two bath with vaulted ceilings, loft, bsmt, 2 car grg & more



Commercial opportunity in Oakley, KS. Call Kevin 443-1722



This is a one-of-a-kind home. Call Molly or Kevin



Don't rent! Own this home! 555 Martin



Lots of new! Move in ready! 545 Martin

Stock Realty & Auction Co. www.stockra.com
390 N. Franklin Ste. 100 Colby, KS 67701 (785) 460-7653

HOME FOR SALE

340 E. WALNUT
Custom-built home in Colby with 6 bedrooms, 4 baths, home office with private entrance. 3,700 sq ft. Ready for your family. Leave message at 785-460-6501.

NEW LISTING

910 Court Terrace
\$125,000



4 Bedrooms, 2 Bath, full finished basement, All appliances, Large fenced in yard with garden shed and dog pen, Utility room in Kitchen. Single Car Garage.

Call Linda at **785-443-1673** to See This Home



1085 Taylor Ave., Colby, KS

FARM & RANCH REALTY, INC.

1977 - 2013
36
YEARS OF
EXPERIENCE
EXPERTISE
EXCELLENCE

1420 W. 4TH - P.O. BOX 947
COLBY, KS 67701

Telephone: 785-462-3904

DONALD L. HAZLETT, Broker

www.farmandranchrealty.com

We invite you to talk to one of our Real Estate professionals:

- Don Hazlett, Broker • Cindy Hake, Office Mgr • Naomi Ward • Melanie Voss • Steve Hazlett • Ron Evans • Ed Currier • Neal Mann • Mike Bailey • J.D. Hininger

AUCTION SCHEDULE

10/15/13 - 960± acres Sherman County, KS cropland, grass & CRP offered in 3 tracts and combinations.

10/17/13 - 760 acres cropland & grass on NT/PH Co line W of Logan, KS offered in 5 tracts and combinations.

10/22/13 - Storage Units and 1940 Packard automobile, Oakley, KS

10/29/13 - 945 acres Decatur County cropland, grass, country homes and farm machinery, offered in 8 individual tracts. Machinery to sell after land at the Gateway in

11/1/13 - 1.6 acres Commercial property at I-70 exit 107, Quinter, KS. Selling will be the land under the convenience store & DQ

11/15/13 - 400 ac Norton County, KS cropland, grass & country home, offered in 5 tracts and combinations.

11/19/13 - 3,040 ac Hamilton County, KS cropland & grass PLUS producing minerals, offered in tracts & combos

JUST LISTED



930 W. 2ND
"GREAT LOCATION"

- 1,880 finished sq. ft. 1½ story home with many updates
- 4-5 Bedrooms - 1½ baths
- Basement
- Fenced back yard

Price: \$83,000

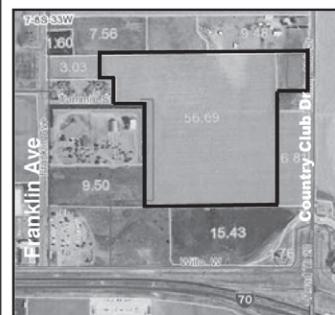
**CHECK OUR WEBSITE FOR VIRTUAL TOURS!

"When you list with Farm & Ranch, it's as good as SOLD!"

LAND FOR SALE

NEW LISTING

Commercial Property!!
THOMAS COUNTY, KS



54 ac tract in SE/4 of 7-8-33

Located just off I-70 on Country Club Dr

GOVE - 98.0± ac cropland 2N & 2E of Quinter, immediate possession to Buyer - **PRICE REDUCED!**

GOVE - 80 ac cropland, SE of Quinter - all minerals to Buyer - E/2NE/4 of 23-13-26- **PRICE REDUCED!**

SHERMAN - 640 ac cropland & grass, 3½ S, 1W & 1S of Edson, all of Section 21-9-38



715 W. 8TH - \$54,000



424 SMITH DR - \$224,000



195 N. FRANKLIN - Price: \$65,000



Thinking of Buying or Selling -- Call **MELANIE VOSS** 785-443-0611



(785) 462-8255

www.HomeLandRE.com

- Pat Sloan (785) 443-3261
- Marilyn Meyer (785) 462-2703
- Toni Lindberg (785) 443-4032
- Rock L. Bedore (785) 443-1653
- Tom Harrison (785) 443-0136
- Jerry Wycoff (785) 672-0429
- Mike Scott (785) 675-8556

Rory Bedore - Owner
1055 S. Range - PO Box 508
Colby, KS

NICE NEIGHBORHOOD



985 E. 8th
3 BR/2 Bath
Give Tom a call today!

OAKLEY, KS



605 W. 7th
6 BR/2 Bath
Call Jerry today!

Residential Lots \$14,000 to \$19,000	
224 Price, Oakley	CONTRACT
1115 Cty Road R, Levant	\$45,000
621 Cornell, Oakley	\$59,500
110 S. School	\$59,900
419 Colby Ave., Oakley	CONTRACT
985 E. 8th	\$72,500
605 W. 7th, Oakley	\$75,000
605 Longview, Oakley	CONTRACT
209 S. Waldo, Oberlin	CONTRACT
1060 W 2nd	CONTRACT
206 Longview, Oakley	CONTRACT
1725 W. 5th	CONTRACT
2290 Cty Road 34, Rexford	\$138,500
1040 Villa Vista	SOLD
1130 Terrace	EXCLUSIVE
1165 Wheatridge Road	\$210,000
1807 Harvey Court	\$265,000

COMMERCIAL LISTINGS

320 Main, Rexford, KS 3,240 sq ft steel building with workshop, storage and living area, situated on five full lots. Call Rock today!
Commercial building site 1-10 acres North of I-70 on Willow Avenue East of Whistle Stop. Give Tom a call today!
63 Acre parcel or 2-6 acre lots located along I-70 frontage, Colby, KS. \$17,000/acre Call Marilyn!
Colonial Steak House Oakley, KS CONTRACT
1075 S. County Club **SOLD**

AG LAND LISTINGS

160 Acres Logan County Cropland - 13 South, 3 West and 1 South of Oakley, KS. - \$3,000/Acre Call Rock!
160 Acres Logan County CRP - 15 South of Monument, KS. - \$1,250/Acre Call Rock!
80 Acres Logan County Dryland - \$160,000 Call Tom!
960 Acres Wallace County Grass - Ranch w/Improvements - \$975/Acre Call Pat or Rock!
160 Acres CRP (Contract thru 9-30-25) Sherman County Land - \$1750/Acre Call Tom!
160 Acres of Thomas County Cropland - 1/2 North of Levant \$3,250/Acre - CONTRACT
120 Acres of Thomas County Cropland - 1/2 West of Levant \$3,500/Acre - CONTRACT



COLBY
FREE PRESS

YOUR SOURCE FOR LOCAL NEWS & SPORTS

Subscribe Today!

155 W. Fifth St. • Colby, KS 67701

785-462-3963