

Classifieds

To place your classified ad, mail (155 W. Fifth), fax (785-462-7749), phone (785-462-3963), or stop by our office at 155 W. Fifth

Wanted

Dry land/Irrigated land to cash rent, will pay a premium. 785-567-7837.
---9/12---12/4---

Vehicles for Sale

1999 Ford Explorer All wheel drive, leather interior, keyless entry, 142K, good condition. \$3,200 here in Colby 785-953-0698.
---10/30---11/4---

1923 Model T Touring Car. Looks and runs great \$17,000 OBO. 785-675-8900.
---10/23---11/6---

Call us before you pay your next insurance premium. American Family Insurance - Rita Peters Agency - Colby 785-462-8246.
---1/18---TFN---

Recreation Vehicle

1979 Kaw KZ 750, 17 ft boat 55 horse, chrysler, 1940's safe black 4x3x3 work 785-443-8265.
---10/30---11/6---

Services

Company's Coming: Carpet Cleaning Special - Any 3 Rooms only \$174.95! Dry-Foam safe & Green Seal approved. Serving NWKS mileage free since 1987. Call today: A+ Cleaners 785-538-2526 or 785-443-5400, Johnene Cheney.
---11/1---12/31---

Wagoner Repair & Performance, located at 1100 S. Country Club Dr., offers reasonable rates for all of your truck and automotive repairs. Locally owned, call 785-460-1081.
---10/23---11/11---

Services

Golden Shears Barber Shop - Haircuts for the family, flat tops, high & tights, any length and style. Over 40 years of experience! Walk ins welcome - appointments available. Hours: Tue - Sat, 8 a.m. - 12 p.m. & 1 - 5:30 p.m., Thursday evening 7 - 9 p.m. 315 Center, Oakley, 785-671-4213.
---10/25---11/14---

Buying Junk Iron: Cars, pickups, wheat trucks, semis, old combines, will clean or pick up iron piles. Chann Fromholtz 785-443-3608. Will pay cash money.
---10/21---12/13---

Tree Trimming & Removal call that tree guy. Kerry at Infinite Connections - Bucket truck, stump grinder, insured, Free Estimates, no mileage charge. 785-626-4261.
---10/21---12/20---

Beckman Fencing for all your fencing needs specializing in barbed wire, pipe corrals, continuous fence, chain length, privacy fences, and any concrete flat work contact Jared at 785-672-7607.
---10/9---11/18---

Do you have weeds every year? Want a great looking yard? Call JM Tree & Lawn Service to fill ALL of your needs this year. We offer full tree care and sprinkler system maintenance/installs as well. Call today to get a free quote. 785-462-6908.
---5/13---TFN---

Services

Do Your Feet Hurt? We can help with I-Step Technology. We also provide medicare approved diabetic shoes up to size 15 with doctors prescription by appointment only. Currier Drug, Inc, Atwood. 1-800-696-3214.
---4/22---TFN---

Have a leaking roof and need it repaired? Look no further. Murray Roofing & Construction, LLC will give you a free estimate and roof inspection. We specialize in residential and commercial roofing systems. Call our office to schedule an inspection. 785-462-6908.
---3/11---TFN---

Garage Sales

8th & Franklin, Unit B - Saturday, 8:30 - 10:30 a.m.
---10/31---11/1---

Treasure Hunt! 5-family garage sale! Hunter Hall, Brewster, KS - Saturday, November 9, 8 a.m. - 2 p.m. Antiques, little girls clothes, men's jeans, winter coats and much more!
---10/30---11/8---

South Country Club, look for signs! Friday, 1 - 5 p.m. and Saturday, 10 a.m. - ??
---10/28---11/1---

FULL-TIME CHEMICAL APPLICATOR

Mid State Farmers Coop, Inc. is seeking applicants for a **Full Time Chemical Applicator**. The applicants must possess the following: a Class A CDL, 1A chemical applicator license, chemical applicator experience preferred, clean background with no felonies, and a good driving record. Mid State Farmers Coop, Inc. has competitive wages and benefits. Please send resume to PO Box 195, Rush Center, KS 67575 or Call 785-372-4239 for an application EOE.

Real Estate



Stock Realty and Auction Company Wants to be Your Real Estate Company. Molly J. Oliver and Kevin M. Barnett Want to Go to Work for YOU!



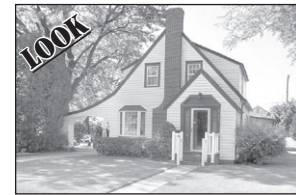
Molly J. Oliver - 462-5203
Kevin Barnett - 443-1722



Wonderful 5BR Home. Open Floor Plan & Lots of Extras 1835 W. 5th \$156,900



A Great Home with a "New Look" 4BR, 2 Bath 375 W. 7th \$142,500



Wonderfully Charming Home with 4-5BRs, 3 Baths 480 W. 5th \$135,000



A Perfect Family Home "A Must See" 375 W. 5th \$239,000



An Adorable, Affordable Home with lots of New 555 Martin \$39,900



470 +/- Acres of Grassland & Cropland Cheyenne County, KS



Commercial Opportunity! Call Kevin 443-1722 200 Center, Oakley, KS



Lease Space Available in Dillons Call Molly Today!

Stock Realty & Auction Co. www.stockra.com
390 N. Franklin Ste. 100 Colby, KS 67701 (785) 460-7653

Real Estate



NEW LISTING!
101 S. Penn Ave., Jennings
6 BR/2 Bath
Give Tom a call today!



OAKLEY, KS
621 Cornell, Oakley
4 BR/2 Bath
Call Jerry today!

Residential Lots	\$14,000 to \$19,000
224 Price, Oakley	CONTRACT
1115 Cty Road R, Levant	\$45,000
621 Cornell, Oakley	\$59,500
110 S. School	\$59,900
419 Colby Ave., Oakley	CONTRACT
101 S. Penn Ave., Jennings	\$69,500
985 E. 8th	\$72,500
605 W. 7th, Oakley	\$75,000
605 Longview, Oakley	CONTRACT
209 S. Waldo, Oberlin	CONTRACT
1060 W 2nd	CONTRACT
206 Longview, Oakley	CONTRACT
1725 W. 5th	CONTRACT
2290 Cty Road 34, Rexford	\$138,500
1130 Terrace	EXCLUSIVE
1165 Wheatridge Road	\$198,500
1040 Villa Vista Dr.	\$225,000
1807 Harvey Court	\$265,000

COMMERCIAL LISTINGS

Commercial building site 1-10 acres North of I-70 on Willow Avenue East of Whistle Stop. Give Tom a call today!
63 Acre parcel or 2-6 acre lots located along I-70 frontage, Colby, KS. \$17,000/acre Call Marilyn!
Colonial Steak House Oakley, KS CONTRACT

AG LAND LISTINGS

160 Acres Thomas County Cropland w/several shop buildings, grain storage, and cattle facility - 3 West and 4 South of Colby, KS. \$848,000 (can be split) Call Rock for details!
1,900 Acres Logan County Grass Ranch located SW of Monument, KS. - \$1,000/Acre Call Rock for details!
160 Acres Logan County Cropland - 13 South, 3 West and 1 South of Oakley, KS. - \$3,000/Acre Call Rock!
160 Acres Logan County CRP - 15 South of Monument, KS. - \$1,250/Acre Call Rock!
80 Acres Logan County Dryland - \$160,000 Call Tom!
960 Acre Wallace County Grass Ranch w/Improvements - \$975/Acre Call Pat or Rock!
160 Acres CRP (Contract thru 9-30-25) Sherman County Land - \$1750/Acre Call Tom!
160 Acres Sherman County Irrigated Cropland - \$3,600/Acre Call Tom!
160 Acres of Thomas County Cropland - 1/2 North of Levant \$3,250/Acre - SOLD
120 Acres of Thomas County Cropland - 1/2 West of Levant \$3,500/Acre - SOLD

Let Our Agents Work for You!

Kansas Classified Network

Adoption - Happily married couple wish to adopt a newborn. Promise love, laughter, security for your baby. Expenses paid. Call or Text Kate & Tim - 302 750-9030

Auctions 2-Day November 9th & 10th Manhattan, KS Four semi loads of New Building Materials Kitchen Cabinets, Granite Countertops, Doors, Flooring; 2 Large Estates - vehicles, tools antiques and collectables and much more. For more info visit TotallyAuction.com

Auctions Structurally artistic house built in 1999 by KSU professor of interior architecture. 3,755 square foot 2 story residence with a basement in Manhattan KS. RuckertAuctions.com for more information.

Help Wanted DRIVERS NEEDED IMMEDIATELY!! Haul railroad crews throughout Kansas. 21+ years old* Valid Driver's License* Clean MVR* Drug and Background Checks. Apply online at: www.Renzenberger.com

Kansas Classified Network

Help Wanted Partners In Excellence OTR Drivers APU Equipped Pre-Pass EZ-pass passenger policy. 2012 & Newer equipment. 100% NO touch. Butler Transport 1-800-528-7825

Help Wanted/Truck Driver 4000+ Collectible & Vintage Toys Auction Nov 15 & 16, Wellington KS; United Country Thurer Auction/Realty, 800.207.6830 / UCThurerAuctions.com. Bid Live or Online

Help Wanted/Truck Driver Drivers: CDL-A. Train and work for us! Professional, focused CDL training available. Choose Company Driver, Owner Operator, Lease Operator or Lease Trainer. (877) 369-7885 www.CentralTrucking-DrivingJobs.com

Help Wanted/Truck Driver Exp. Flatbed Drivers: Regional opportunities now open with plenty of freight & great pay! 800-277-0212 or primeinc.com

Kansas Classified Network

Help Wanted/Truck Driver Transfer Drivers: Need CDL A or B Contract Drivers, to relocate vehicles from local body plants to various locations throughout U.S.--No forced dispatch: 1-800-501-3783 or www.mamotransportation.com under Careers.

Sporting Goods WORLD'S LARGEST GUN SHOW - November 9 & 10 - Tulsa, OK Fairgrounds. Saturday 8-6, Sunday 8-4. WANEMACHER PRODUCTIONS. Free appraisals. Bring your guns! www.tulsaarmsshow.com



Qdoba Mexican Grill of Colby is now accepting applications for qualified members to join our team. If you are a motivated, enthusiastic, team player looking for an opportunity to join a fast growing company with room for advancement that this is the place for you! Pick up an application today at the Oasis Travel Center or check us out online at Qdoba.com. Please call (209) 312-0312 with questions. EOE.

TAKE A SMALL STEP TO GET HEALTHY

www.smallstep.gov



Real Estate

1977 - 2013 36 YEARS OF EXPERIENCE EXPERTISE EXCELLENCE

FARM & RANCH REALTY, INC.
1420 W. 4TH - P.O. BOX 947 COLBY, KS 67701
Telephone: 785-462-3904
DONALD L. HAZLETT, Broker

www.farmandranchrealty.com

We invite you to talk to one of our Real Estate professionals:
• Don Hazlett, Broker • Cindy Hake, Office Mgr • Naomi Ward • Melanie Voss • Steve Hazlett • Ron Evans • Ed Currier • Neal Mann • Mike Bailey • J.D. Hininger

AUCTION SCHEDULE

11/15/13 - 400 ac Norton County, KS cropland, grass & country home, offered in 5 tracts and combinations

11/15/13 - 105 ac Norton County, KS grass with country home

11/19/13 - 3,040 ac Hamilton County, KS cropland & grass PLUS producing minerals, offered in tracts & combos

11/22/13 - Frahm Family Charitable Trust Farm Machinery Auction, at Auction Pavilion 1/2 W of Colby, KS

11/26/13 - Koehn Farm Machinery Auction, 10E & 11S from Scott City, KS

12/04/13 - 760 ac Decatur & Rawlins Counties, KS cropland & grass - in tracts

12/10/13 - 160 ac Decatur County, KS cropland & grass, 1 mi S of Jennings

LAND FOR SALE

THOMAS - 54 ac Commerical Property in SE/4 of 7-8-33. Located on I-70 exit 54 on Country Club Dr, Colby, KS

SHERIDAN - 160 ac cropland, 2E of Seguin, SW/4 of 27-8-29, BUYER WILL RECEIVE 50% OF MINERALS - PRICE REDUCED!

GOVE - 98.0± ac cropland 2N & 2E of Quinter, immediate possession to Buyer - PRICE REDUCED!

GOVE - 80 ac cropland, SE of Quinter - all minerals to Buyer - E/2NE/4 of 23-13-26 - PRICE REDUCED!

SHERMAN - 640 ac cropland & grass, 3 1/2 S, 1W & 1S of Edson, all of Section 21-9-38

195 N. FRANKLIN - Price: \$65,000

715 W. 8TH - Price: \$54,000

424 SMITH DR - Price: \$224,000

JUST LISTED

280 E. 4TH
GREAT INVESTMENT OPPORTUNITY!
Price: \$49,500

JUST LISTED

1155 MAIZE
UPDATED & BEAUTIFUL!

- > 2,688 finished sq. ft.
- > 4 Bedrooms - 3 baths
- > Open floor plan
- > Two fireplaces
- > Spacious remodeled basement
- > 2-car attached garage
- > Patio, deck & abundant outdoor space

Price: \$239,000

Thinking of Buying or Selling -- Call MELANIE VOSS 785-443-0611

**CHECK OUR WEBSITE FOR VIRTUAL TOURS!

"When you list with Farm & Ranch, it's as good as SOLD!"

friends don't let friends drive drunk.

HomeLand REALTY AUCTION

(785) 462-8255
www.HomeLandRE.com

Pat Sloan (785) 443-3261
Marilyn Meyer (785) 462-2703
Toni Lindberg (785) 443-4032
Rock L. Bedore (785) 443-1653
Tom Harrison (785) 443-0136
Jerry Wycoff (785) 672-0429
Mike Scott (785) 675-8556

Rory Bedore - Owner
1055 S. Range - PO Box 508 Colby, KS